

FOR LEASE

THE MORROWFIELD

2715 Murray Avenue | Pittsburgh, PA 15217

Retail space at the base of one of the largest structures in Squirrel Hill, The Morrowfield, which has 155 residential and 23 retail units.



HERKY POLLOCK
herky@legacyrealtypgh.com

MIKAYLA MUCCI
mikayla@legacyrealtypgh.com

412.866.LGCY (5429) LEGACYREALTYPGH.COM

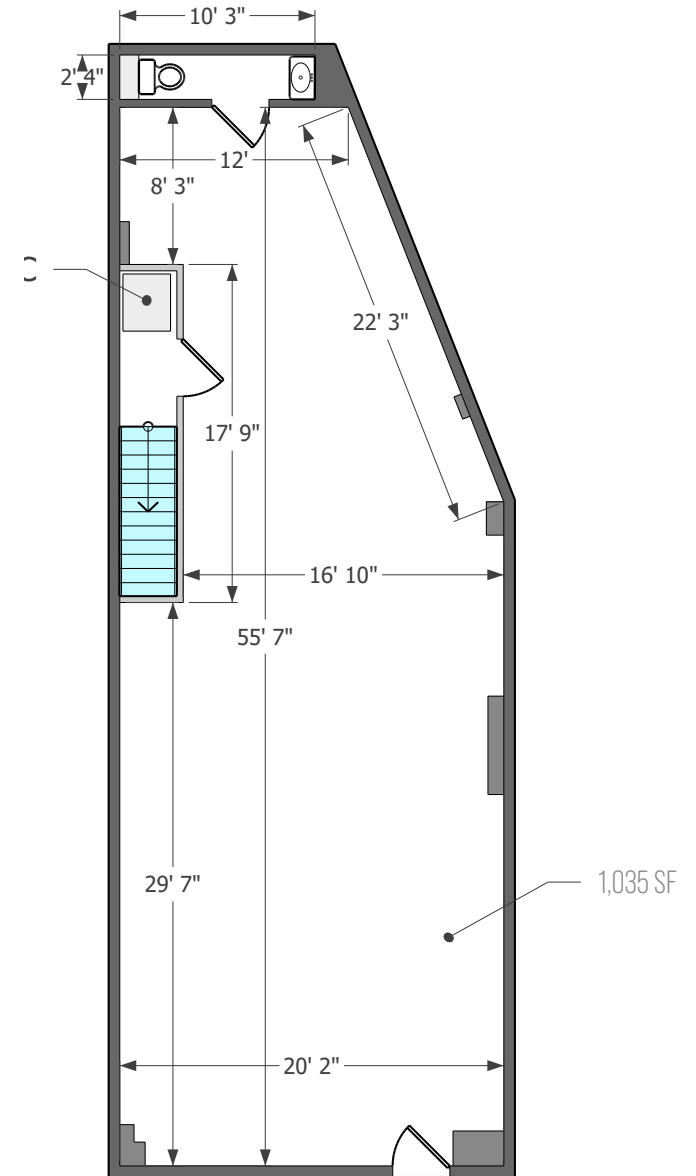
LEGACY
REALTY PARTNERS

AVAILABLE SPACE | **1,035 SF END CAP**
Murray at Morrowfield Avenue

LEGACY
REALTY PARTNERS



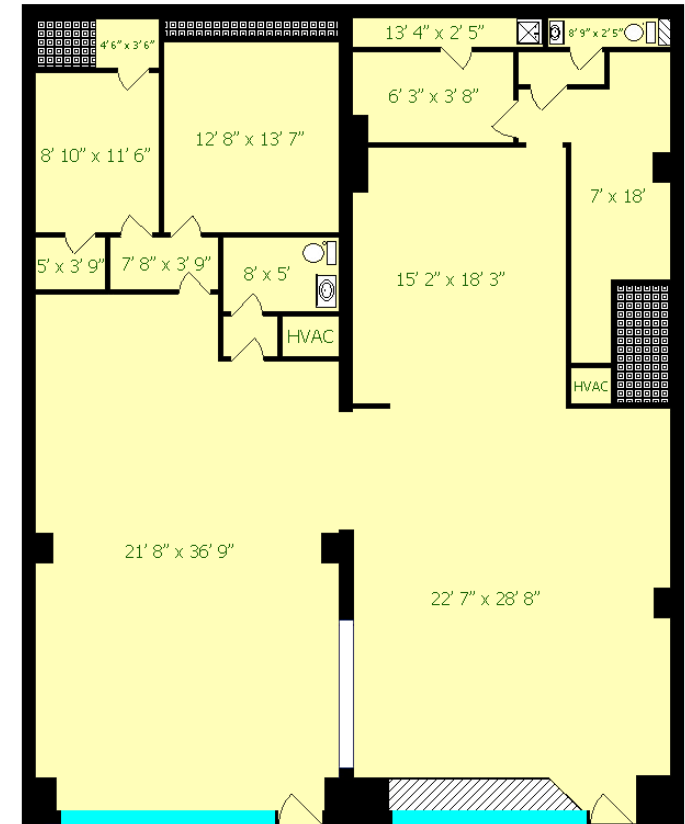
- 1,035 sq. ft. retail space on ground level - Endcap
- Highly visible corner of Murray & Morrowfield
- Ideal for use as coffee shop or cafe



Murray Avenue

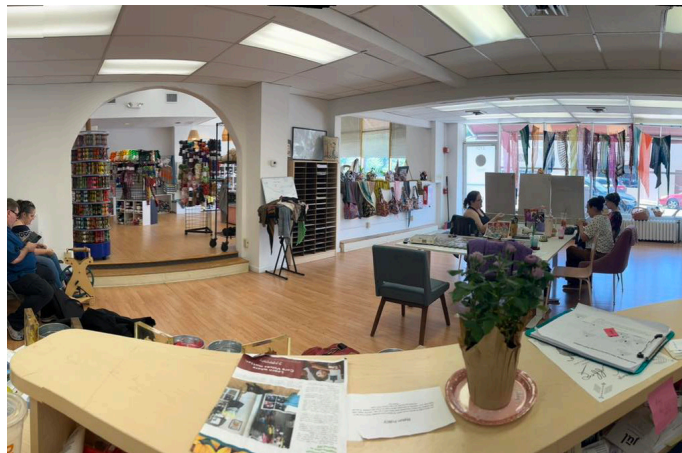
AVAILABLE SPACE | 2,400 SF IN-LINE
Murray at Morrowfield Avenue

LEGACY
REALTY PARTNERS



Murray Avenue

- 2,400 sq. ft. retail space on ground level
- Subdividable
- Near the highly visible corner of Murray & Morrowfield



MARKET AERIAL



© 2025 Legacy Realty Partners. All rights reserved. The information provided has been obtained from sources deemed reliable but has not been verified for accuracy or completeness. It is recommended that you conduct a thorough, independent investigation of the property and verify all details. Any reliance on this information is at your own risk. Legacy Realty Partners and the Legacy Realty Partners logo are trademarks of Legacy Realty Partners, Inc. All other trademarks displayed in this document belong to their respective owners, and the use of these logos does not imply any affiliation with or endorsement by Legacy Realty Partners. The photos contained herein are the property of their respective owners. Unauthorized use of these images is prohibited without the explicit written consent of the owner.

LEGACY
REALTY PARTNERS