

3526 HAYDEN AVENUE

3526 Hayden Avenue

DESIGNED TO DISRUPT

Located in Culver City's renowned Hayden Tract community, 3526 Hayden Avenue offers a premier workspace for creative professionals seeking functionality and style. High sawtooth ceilings and expansive windows provide abundant natural light, while glass offices and an open kitchen encourage a communal environment.

Positioned at the prime intersection of Hayden and National, next to the iconic Art Tower, this innovative building sits within walking distance of popular dining, retail, and the Expo Light Rail station.



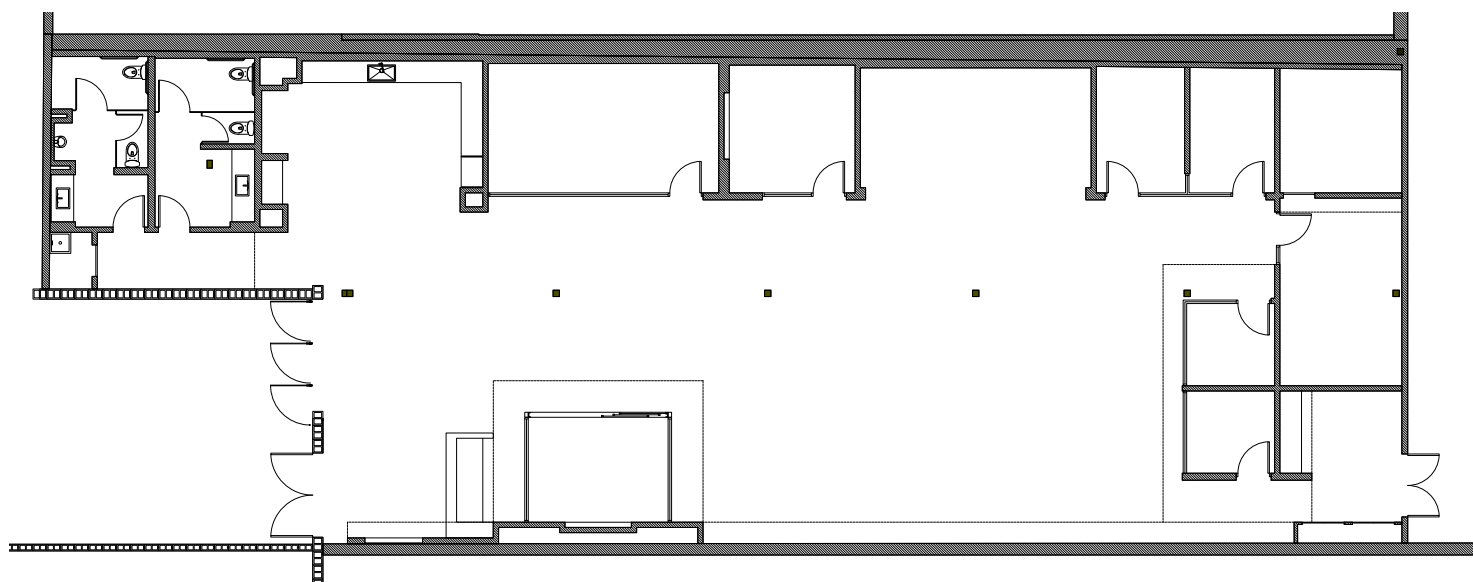
AVAILABLE NOW: 6,095 RSF



CREATE WITHOUT LIMITS

With an open layout, conference rooms, private offices, and shared workspaces, 3526 Hayden Avenue is designed to foster community and support collaborative creativity at every level.

AVAILABLE NOW: 6,095 RSF



THE FOREFRONT OF LA'S CREATIVE SCENE

3526 Hayden Avenue empowers you to thrive in the creative epicenter of Westside LA, surrounded by industry leaders like Amazon, UCLA, and Apple. This dynamic location offers a hub of inspiration, providing endless opportunities to connect and collaborate with top minds in tech, media, and entertainment.



BALLONA CREEK BIKE PATH

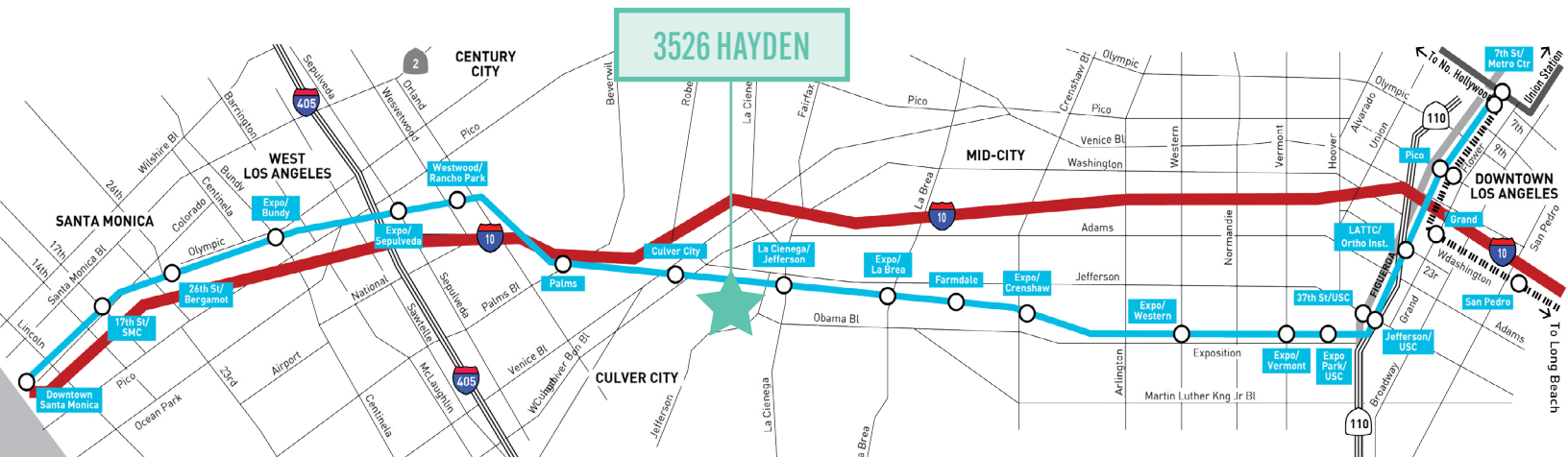
METRO EXPO LINE

PARKING RATIO: 3:1,000 RSF

\$175 UNRESERVED | \$275 RESERVED

YOUR LINK TO THE CITY

With easy access to I-405, I-10, and the Expo Light Rail, 3526 Hayden Avenue puts you minutes from West Los Angeles, Santa Monica, and Century City, streamlining your daily commute. The nearby Ballona Creek Bike Path, a favorite among walkers, runners, and bikers, offers a scenic route straight to Santa Monica Bay, connecting you to the best of the Westside.



For More Information, Please Contact:

GABRIEL BROWN

+1 310 435 4344
gabe.brown@jll.com
CA Lic. 01441920

JOSH BERNSTEIN

+1 310 795 5947
josh.bernstein@cushwake.com
CA Lic. 01828093

ALEXA DELAHOKE

+1 626 340 5391
alexa.delahooke@cushwake.com
CA Lic. 02091695

©2025 Cushman & Wakefield. All rights reserved. The information contained in this communication is strictly confidential. This information has been obtained from sources believed to be reliable but has not been verified. NO WARRANTY OR REPRESENTATION, EXPRESS OR IMPLIED, IS MADE AS TO THE CONDITION OF THE PROPERTY (OR PROPERTIES) REFERENCED HEREIN OR AS TO THE ACCURACY OR COMPLETENESS OF THE INFORMATION CONTAINED HEREIN, AND SAME IS SUBMITTED SUBJECT TO ERRORS, OMISSIONS, CHANGE OF PRICE, RENTAL OR OTHER CONDITIONS, WITHDRAWAL WITHOUT NOTICE, AND TO ANY SPECIAL LISTING CONDITIONS IMPOSED BY THE PROPERTY OWNER(S). ANY PROJECTIONS, OPINIONS OR ESTIMATES ARE SUBJECT TO UNCERTAINTY AND DO NOT SIGNIFY CURRENT OR FUTURE PROPERTY PERFORMANCE. COE-PM-West-01.15.2025

