



## **1801 Smith Ave, Units C & D**

1801 Smith Ave, San Jose, CA 95112



**Pauline Silva-Re**  
Sapphire Properties  
466 Brannon St, San Francisco, CA 94107  
[paulinenoya@cs.com](mailto:paulinenoya@cs.com)  
(415) 806-0942



# 1801 Smith Ave, Units C & D

Upon Request

1801 Smith Avenue, UNITS C & D.  
UNIT C: COLD STORAGE (6,000 sf); and UNIT D (16,484 sf). Unit D can be divided into two separate areas (6,000 & 10,424 sf).  
Formerly San Jose Ice Company and produce company.  
Can be divided into three separate leases....

- 6,000 sf Cold/Freezer storage



Rental Rate:	Upon Request
Min. Divisible:	14,400 SF
Property Type:	Industrial
Property Sub-type:	Warehouse
Rentable Building Area:	22,484 SF
Year Built:	1957
Rental Rate Mo:	\$.90/sf; \$.85/sf entire space

1st Floor

Space Available	14,400 - 22,484 SF
Rental Rate	\$.90/sf; \$.85/sf entire space
Date Available	Now
Service Type	Negotiable
Space Type	Relet
Space Use	Industrial
Lease Term	Negotiable

Warehouse space available, heavy industrial use, minimal build-out, ideal for automotive, storage, woodworking, etc.



## 1801 Smith Ave, Units C & D, San Jose, CA 95112

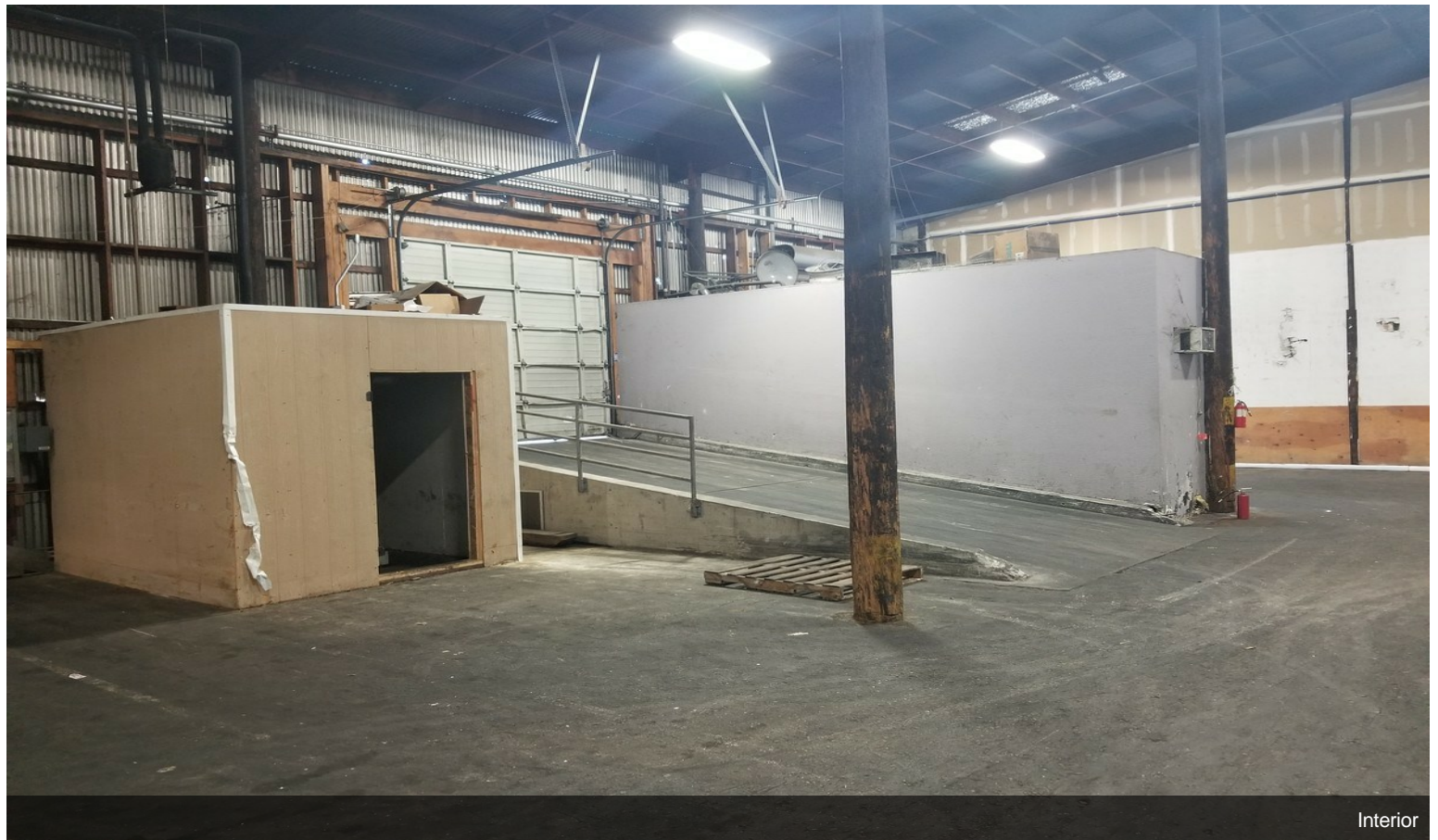
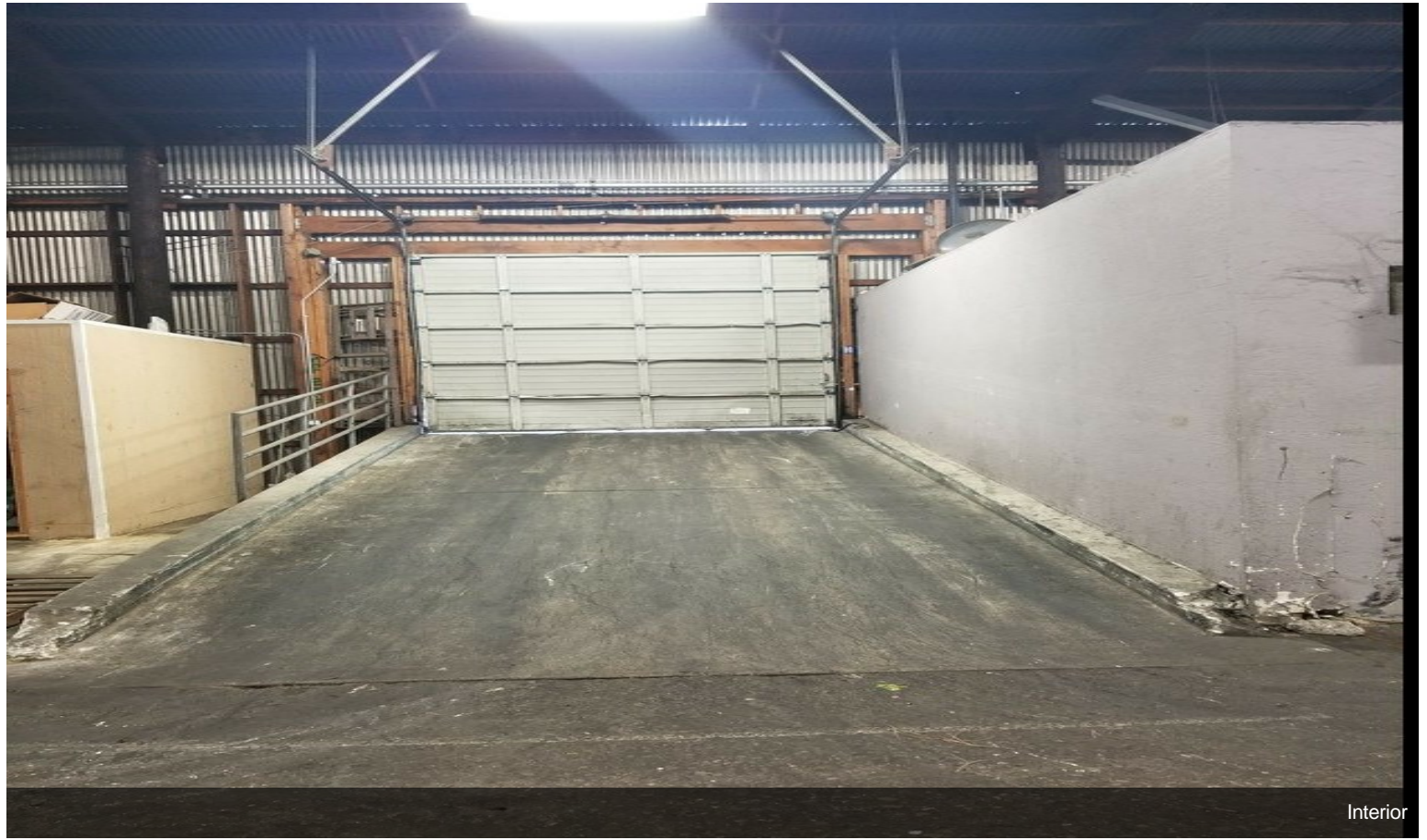
1801 Smith Avenue, UNITS C & D.

UNIT C: COLD STORAGE (6,000 sf); and UNIT D (16,484 sf). Unit D can be divided into two separate areas (6,000 & 10,424 sf).

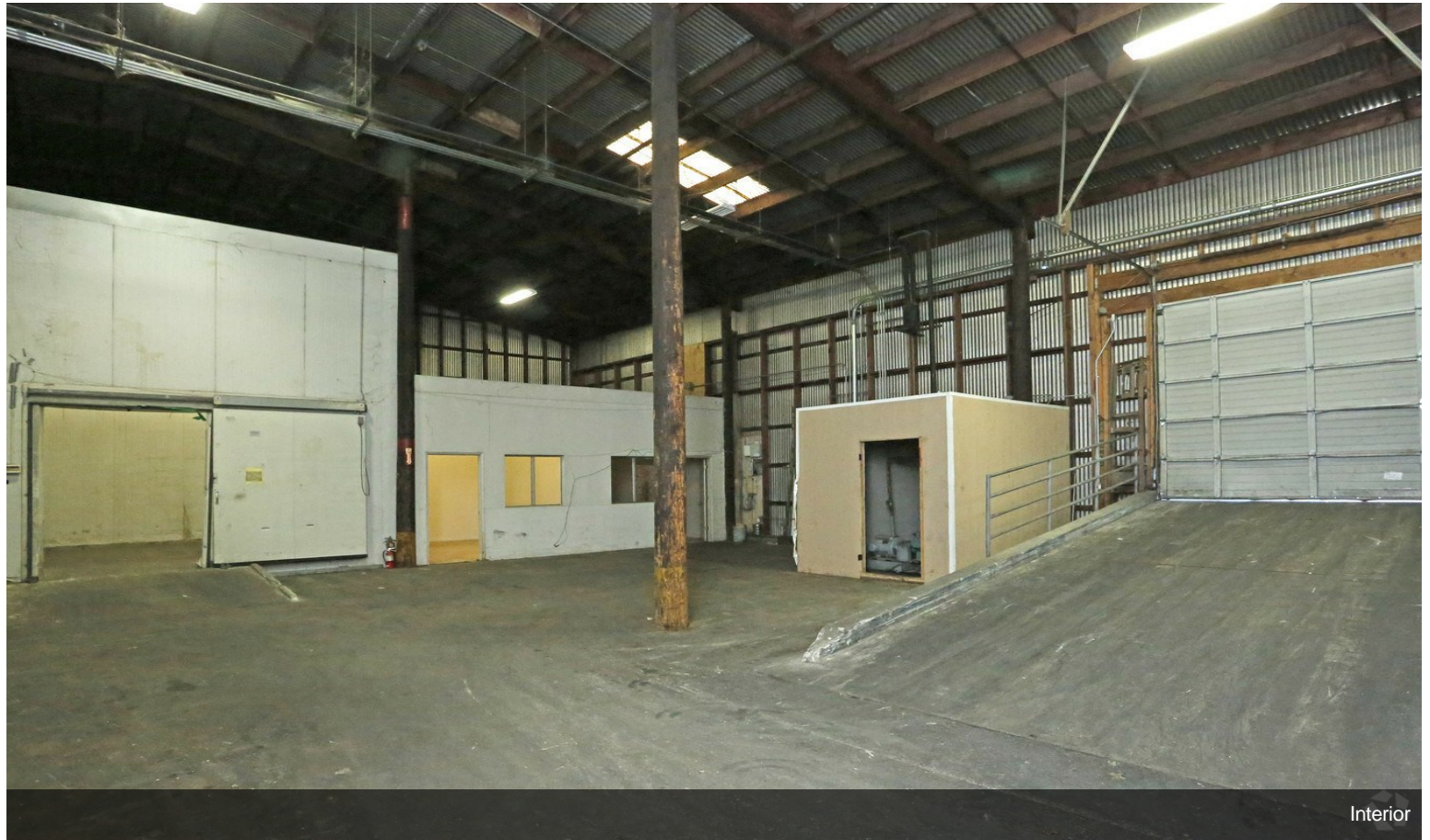
Formerly San Jose Ice Company and produce company.

Can be divided into three separate leases.

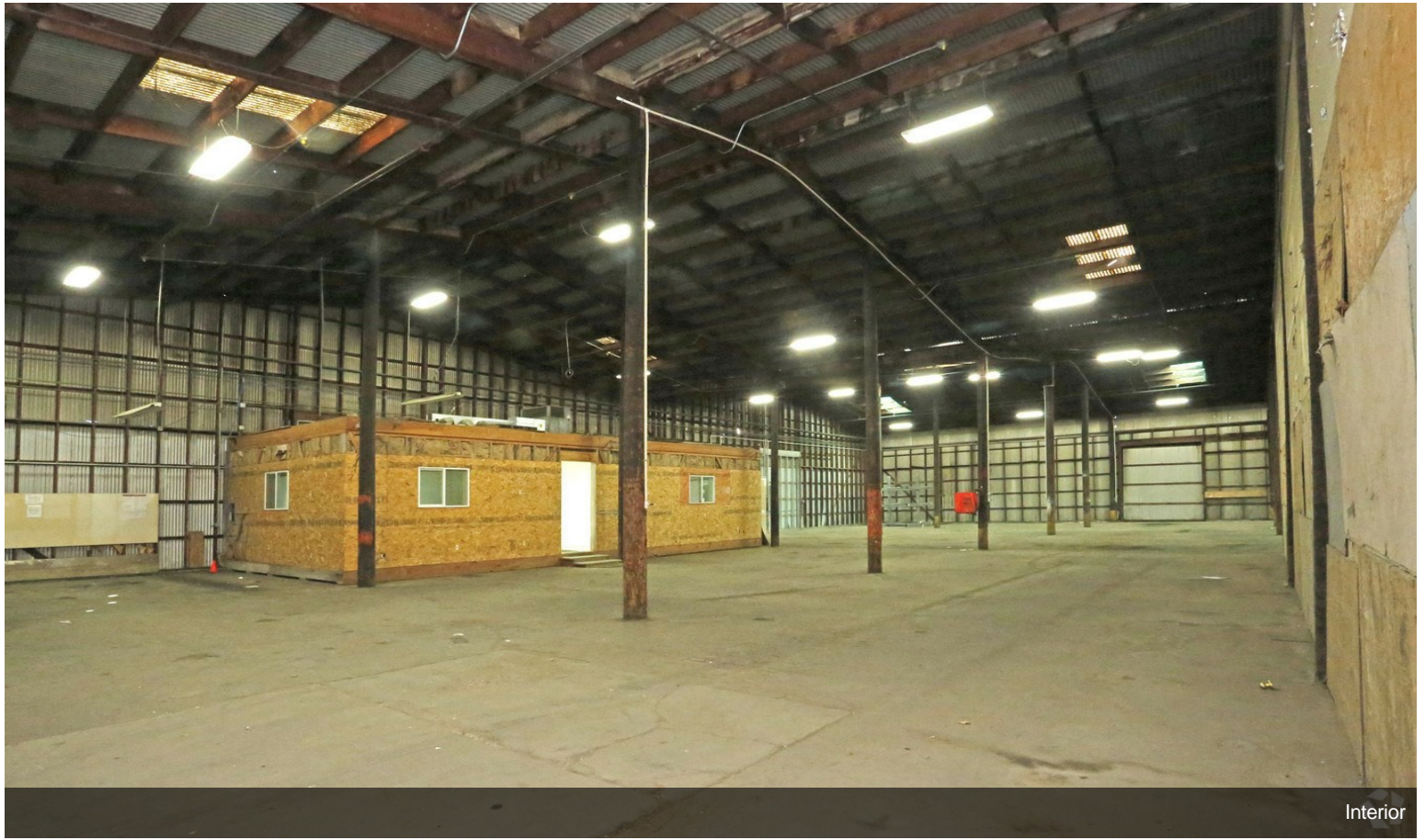
## Property Photos



## Property Photos



## Property Photos

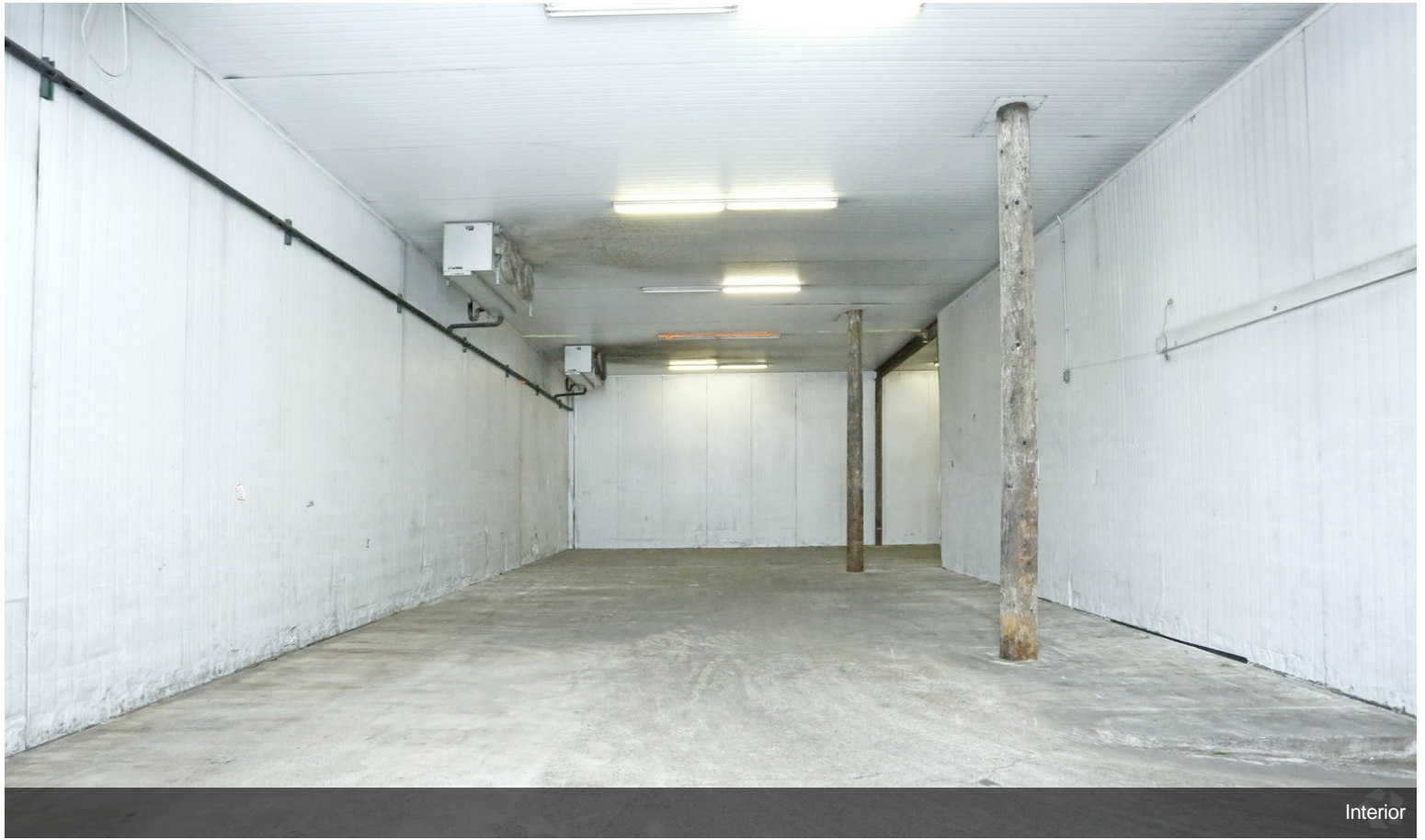


Interior

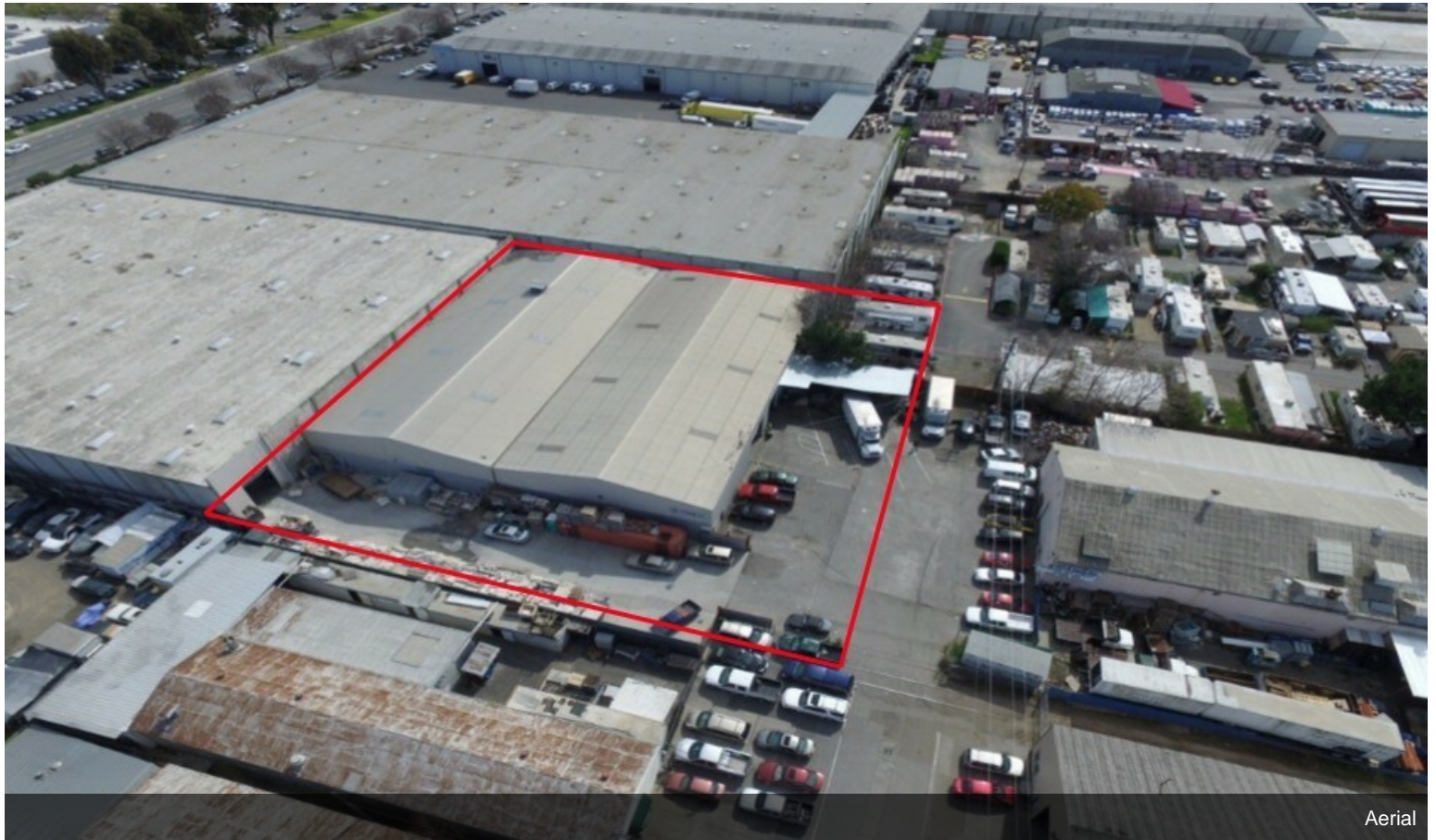


Interior

## Property Photos



Interior



Aerial