



labcorp

# LAB / OFFICE / WAREHOUSE SPACE | FOR LEASE

4229 ROYAL AVE., SUITE 100/101, OKLAHOMA CITY, OK

**KARLEY HARPER, CCIM**  
kharper@newmarkrp.com  
C: 405.371.3498

**BRETT PRICE, CCIM, SIOR**  
bprice@newmarkrp.com  
C: 405.613.8380

**KRIS DAVIS, SIOR**  
kgdavis@newmarkrp.com  
C: 405.202.9525

**NEWMARK**  
ROBINSON PARK

# 4229 ROYAL AVE., SUITE 100&101 / FOR LEASE



LAB SPACE



COVERED PARKING



## DETAILS

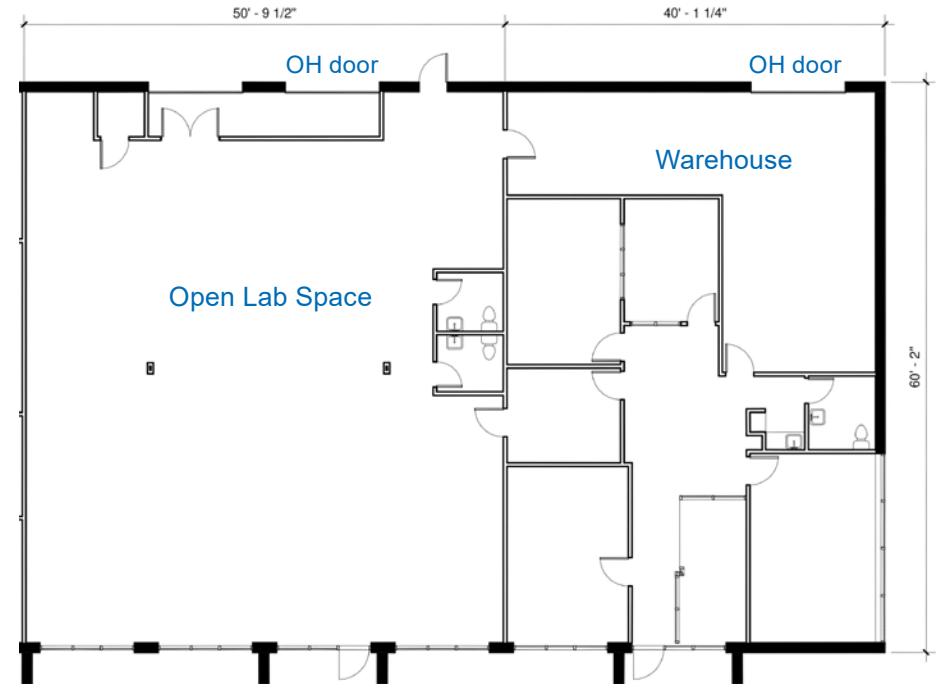
<b>Available SF</b>	5,600 SF
<b>Lease Rate</b>	\$8.50/SF/YR (NNN)
<b>Building Size</b>	18,389 SF
<b>Submarket</b>	Southwest
<b>Cross Streets</b>	Royal Ave. & Metropolitan Ave.

## HIGHLIGHTS

2,800 SF open lab space
1,950 SF office space
850 SF warehouse space
13.5' clear height
(2) 12' grade level doors

## PROPERTY OVERVIEW

This property is located in the southwest submarket of Oklahoma City approximately 1/2 mile south of I-40, just east of S Meridian Ave. The available suite offers a mix of lab, warehouse and office space.



FLOOR PLAN