



PROPERTY DETAILS

- Suite 206
- Size: 2,700 SF
- 500 SF of Office
- Est. 2025 CAM: \$7.40 PSF
- 1 dock high door
- 18' clear ceiling height
- Parking Ratio: 2.97/1,000 SF
- Proximity to I-95 & FL Turnpike - centrally located with quick access to restaurants, hotels, banking, and the Fort Lauderdale Executive Airport (FXE)

ABOUT PROPERTY



PRICE

\$21.00 SF/yr (NNN)



YEAR BUILT

1986



AVAILABLE SF

2,700 SF



PARKING

2.97/1,000



LOCATION

Fort Lauderdale, FL

For more information:

Keith R. Graves, CCIM, SIOR

Daniel Forman

Jonathan Thiel

954.652.2031 | Kgraves@Bergercommercial.Com

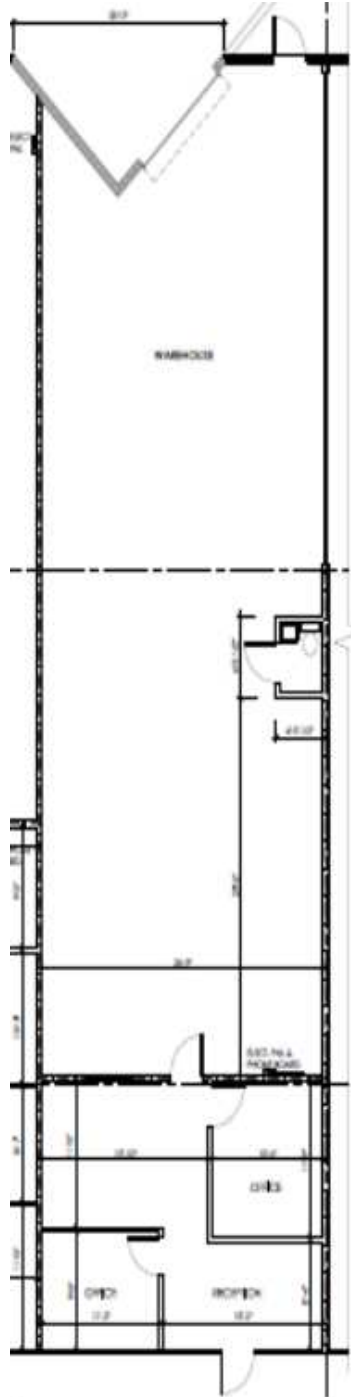
954.652.2004 | Dforman@Bergercommercial.Com

954.652.2020 | Jthiel@Bergercommercial.Com

bergercommercial.com



COMMERCIAL BROKERAGE AND PROPERTY MANAGEMENT



For more information:

Keith R. Graves, CCIM, SIOR

954.652.2031 | Kgraves@Bergercommercial.Com

bergercommercial.com

Daniel Forman

954.652.2004 | Dforman@Bergercommercial.Com

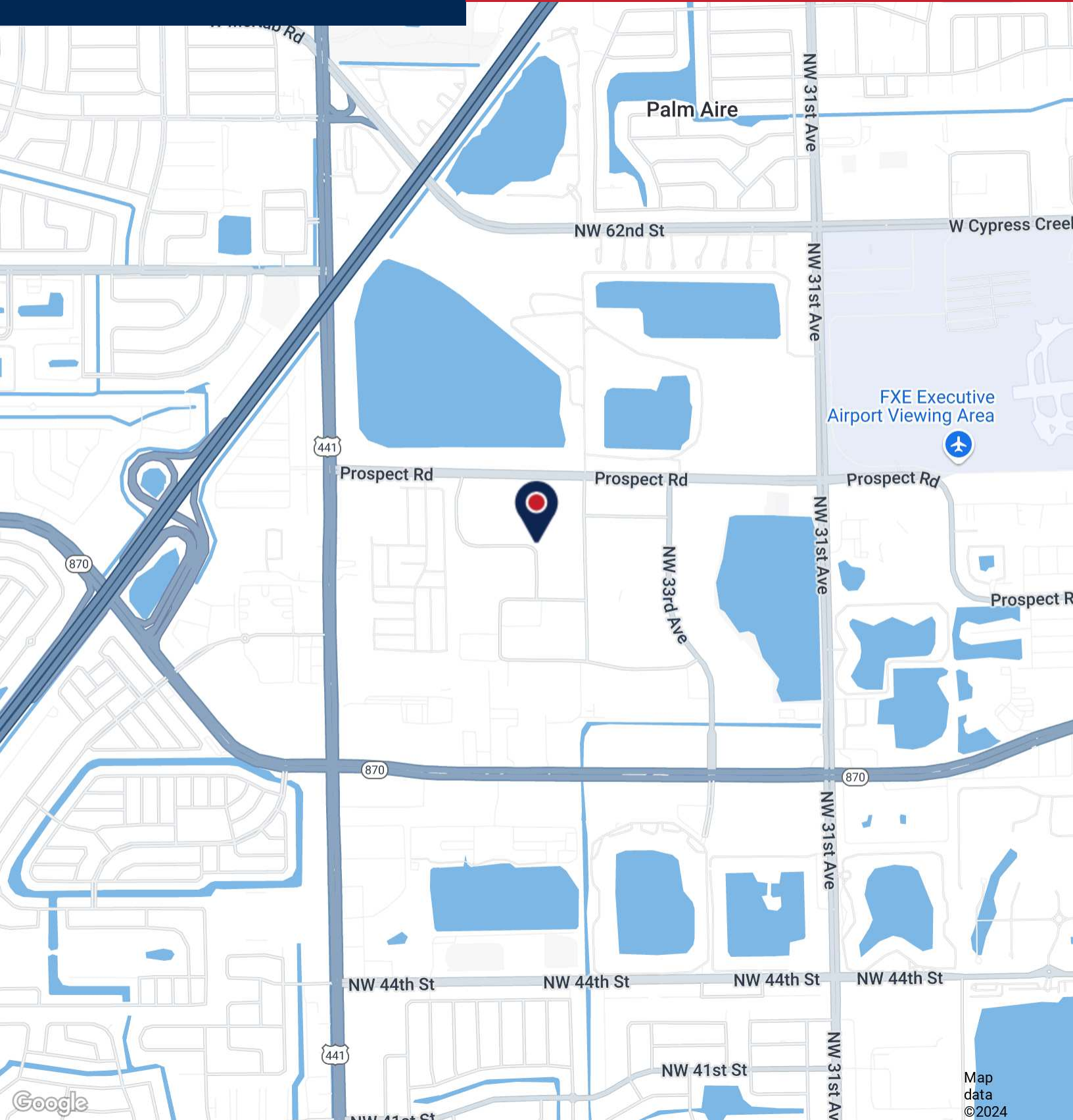
Jonathan Thiel

954.652.2020 | Jthiel@Bergercommercial.Com



PALM CROSSING NORTH

AERIAL MAP



For more information:

Keith R. Graves, CCIM, SIOR

Daniel Forman

Jonathan Thiel

954.652.2031 | Kgraves@Bergercommercial.com

954.652.2004 | Dforman@Bergercommercial.com

954.652.2020 | Jthiel@Bergercommercial.com

bergercommercial.com

