

9815 ANDERSON MILL

SEC ANDERSON MILL RD & ANDERSON MILL CUTOFF
9815 ANDERSON MILL RD, AUSTIN, TX 78750



OFFERING MEMORANDUM



PRICE
\$1,200,000



AVAILABLE LAND
1.08 AC

Austin Augilar
Assistant Vice President
aaguilard@resolutre.com
512.474.5557

Matt Stone
Commercial Advisor
mstone@resolutre.com
512.474.5557

CONFIDENTIALITY & DISCLAIMER

Please note that the use of this Offering Memorandum and the Information ("Information") provided is subject to the terms, provisions and limitations of the confidentiality agreement which we have provided to you ("Buyer") and requested an executed copy.

Brokerage Relationships: By taking possession of and reviewing the information contained herein, Buyer acknowledges that the Listing Team of RESOLUT RE ("Brokers") are acting as Seller's Agent in the disposition assignment for the property.

Non-disclosure of Information: By taking possession of and reviewing the Information contained herein, Buyer agrees not to disclose, permit the disclosure of, release, disseminate or transfer any of the Information obtained from Broker or the Property owner ("Owner") to any other person or entity except as permitted herein. Buyer shall take all appropriate precautions to limit the dissemination of the Information only to those persons within the firm who need to know the Information. The phrase "within the firm" shall be deemed to include outside attorneys, accountants and investors.

Disclaimer and Waiver: By taking possession of and reviewing the Information contained herein, Buyer understands and acknowledges that neither Brokers nor Owner make any representations or warranty, expressed or implied, as to the accuracy or completeness of any Information provided.

Neither the Broker or the Owner shall have any liability whatsoever for the accuracy or completeness of the Information contained herein or any other written or oral communication or Information transmitted or made available or any action taken or decision made by the Buyer with respect to the Property. Buyer understands and acknowledges that they should make their own investigations, projections and conclusions without reliance upon the Information contained herein. Buyer assumes full and complete responsibility for confirmation and verification of all information received and expressly waives all rights of recourse against Owner, Brokers and RESOLUT RE.



Austin Augilar
Assistant Vice President
aaguilar@resolutre.com
512.474.5557

resolutre.com

Matt Stone
Commercial Advisor
mstone@resolutre.com
512.474.5557

BUILDING OVERVIEW

PROPERTY ADDRESS	9815 Anderson Mill Rd, Austin, TX 78750
LOCATION	SEC Anderson Mill Rd & Anderson Mill Cutoff
SALE PRICE	\$1,200,000
LAND SIZE	1.08 AC
BUILDING SIZE	1,200 SF
COUNTY	Williamson County
FRONTAGE	(+/-) 167' on Anderson Mill Rd
ZONING	LR-CO (Neighborhood Commercial)
PARCELS	R062046, R062047, R497755, R497756
UTILITIES	Cable, Curb/Gutter/Sidewalk, Electricity, Gas, Streets, Telephone, Water
TRAFFIC COUNT	Anderson Mill Rd: 27,639 VPD

DEMOGRAPHIC SNAPSHOT (3 MILES)



108,996
2025 POPULATION
3 MILE RADIUS



\$120,030
2025 AVERAGE INCOME
3 MILE RADIUS



41,919
2025 DAYTIME POPULATION
3 MILE RADIUS



29,026 VPD
ANDERSON MILL RD



AREA TRAFFIC GENERATORS

AUSTIN
AQUARIUM
SEA TO BELIEVE

HALF
PRICE
BOOKS

**PET
SUPPLIES
PLUS**

W

iFLY

Tuesday
Morning

TEXAS
RANGERS

Cheddar's
SCRATCH KITCHEN

MAIN EVENT

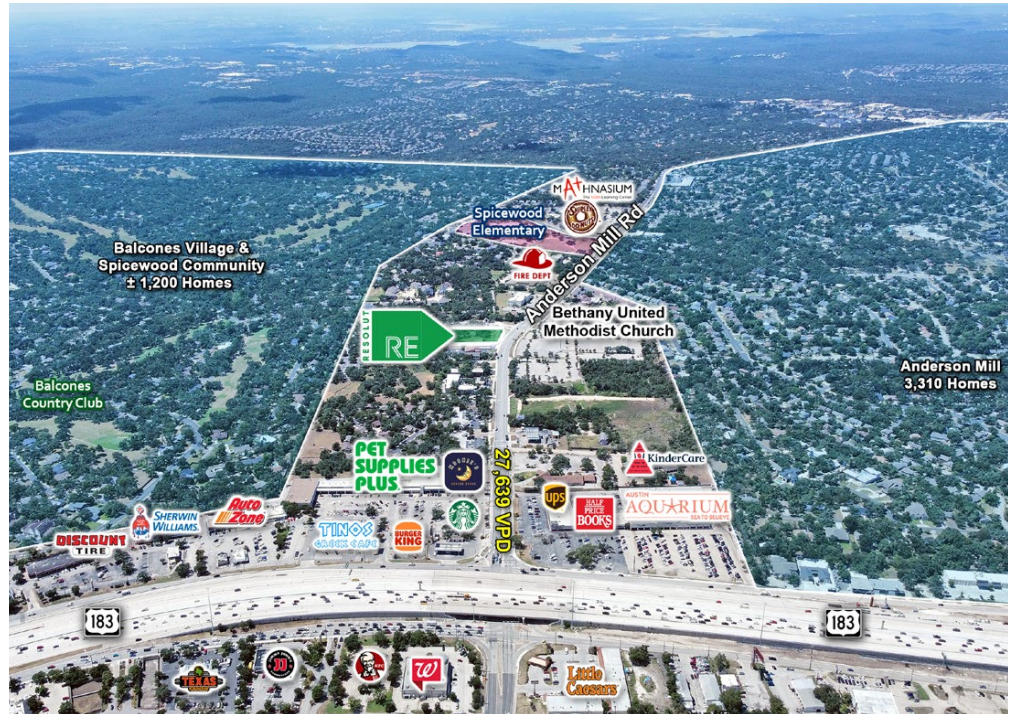
OFFERING SUMMARY

Located at 9815 Anderson Mill Rd in Northwest Austin, this 1.08-acre property presents an outstanding development opportunity in one of Austin's high-demand areas. Situated between US-183 and FM-620, the site benefits from exceptional visibility with 27,000+ vehicles per day and a signalized intersection providing easy access. Recently rezoned to Neighborhood Commercial (LR-CO), the property is ideal for a range of potential uses, including retail, medical offices, restaurants, or custom manufacturing.

With utilities available on-site and a level topography, it is primed for immediate development. The area is surrounded by residential neighborhoods, offering a built-in customer base for future businesses. As Austin continues its rapid growth, the northwest corridor becomes increasingly desirable, offering a unique blend of commercial viability and proximity to key transportation routes, making 9815 Anderson Mill Rd an excellent investment for developers looking to capitalize on Austin's thriving economy.

PROPERTY HIGHLIGHTS

- Available for sale
- Recent Zoning Change: From Limited Office to Neighborhood Commercial
- Utilities Available On-Site
- Ingress/Egress
- Signalized intersection
- Development Potential for neighborhood retail, restaurant, medical office, services, custom manufacturing



LR

Neighborhood Commercial

Neighborhood Commercial district is intended for neighborhood shopping facilities that provide limited business services and office facilities predominately for the convenience of residents of the neighborhood.

Site Development Standards

Lot		Massing	
Minimum Lot Size	5,750 sq ft	Maximum Height	40 ft or
Minimum Lot Width	50 ft		3 stories
Maximum Building Coverage	50%	Minimum Setbacks	
Maximum Impervious Cover	80%	Front yard	25 ft
Maximum Floor Area Ratio	.5:1	Street side yard	15 ft
		Interior side yard	n/a
		Rear yard	n/a

Permitted and Conditional Uses

†For detail on marked uses in the Neighborhood Commercial district, see the Austin City Code 25-2-586.

Residential

Bed and Breakfast Residential (Group 1) * Bed and Breakfast Residential (Group 2) *

Civic

Club or Lodge (c)	Group Home Class I—Limited *
College and University Facilities *	Group Home Class II (c) *
Communication Service Facilities *	Guidance Services
Community Events *	Hospital Services—Limited (c)
Community Recreation—Private (c) *	Local Utility Services
Community Recreation—Public (c) *	Private Primary Educational Services *
Congregate Living (c)	Private Secondary Educational Services *
Counseling Services	Public Primary Educational Services *
Cultural Services	Public Secondary Educational Services *
Day Care Services—Commercial	Religious Assembly
Day Care Services—General	Residential Treatment (c) Safety
Day Care Services—Limited	Services Telecommunication Tower
Family Home *	(PC) *
Group Home Class I—General *	

LR (continued)

Commercial

Administrative Business Office	Off-Site Accessory Parking
Alternative Financial Services (c)	Pedicab Storage and Dispatch
Art Gallery	Personal Improvement Services—not
Art Workshop *	exceeding 5,000 sq/ft of gross floor space
Consumer Convenience Services	Personal Services
Consumer Repair Services	Pet Services
Financial Services	Plant Nursery (c) *
Food Sales	Printing and Publishing
General Retail Sales—Convenience	Professional Office
General Retail Sales—General—not exceeding	Restaurant—Limited *
5,000 sq. ft of gross floor space †	Restaurant—General—not exceeding
Medical Offices—not exceeding	4,000 sq/ft of gross floor space †*
5,000 sq/ft of gross floor space	Service Station *
Medical Offices—exceeding	Software Development
5,000 sq/ft of gross floor space (c)	Special Use Historic (c) *

Industrial

Custom Manufacturing (c)

Agricultural

Community Garden
Urban Farm *

-CO

Conditional Overlay Combining District

Purpose: The purpose of the conditional overlay (CO) combining district is to modify use and site development regulations to address the specific circumstances presented by a site. Use and site development regulations imposed by a CO combining district must be more restrictive than the restrictions otherwise applicable to the property.

Application: A conditional overlay may be applied any base district to do the following:

- Prohibit permitted, conditional and/or accessory uses otherwise allowed in a base district.
- Make a permitted use a conditional use
- Decrease the density that may be constructed
- Increase minimum lot size or minimum lot width requirements
- Decrease maximum floor to area ratio (FAR)
- Decrease maximum building heights
- Increase minimum yard and setback requirements
- Establish buffering requirement (hedge, fence, undisturbed buffer along property lines)
- Decrease maximum building or impervious coverage requirements
- Limit the maximum square footage of building space
- Restrict access to adjacent roads and require specific design features to minimize the effects of traffic
- For a mixed use (MU) combining district, prohibit or make conditional a use that is otherwise permitted by Chapter 25-2, Subchapter E (Mixed Use Zoning Districts) of the Land Use Development Code.

§ 25-2-587 - REQUIREMENTS FOR CERTAIN USES IN A NEIGHBORHOOD COMMERCIAL (LR) DISTRICT.

(A) This section applies in a neighborhood commercial (LR) district.

(B) A personal improvement services use may not exceed 5,000 square feet of gross floor area.

(C) This subsection applies to a general retail sales (general) use.

(1) The gross floor area may not exceed 5,000 square feet.

(2) Access to the site from a local street is prohibited.

(D) This subsection applies to a restaurant (general) use.

(1) The gross indoor floor area may not exceed 4,000 square feet.

(2) A restaurant (general) use may operate only after 7:00 a.m. and before 11:00 p.m.

(3) An outdoor seating area may not (a) exceed 500 square feet of area; or (b) be located within 50 feet of property with a single-family use or property zoned as a townhouse and condominium residence (SF-6) or more restrictive district.

(4) Outdoor entertainment as an accessory use is prohibited.

(5) Outdoor amplified sound is prohibited.

(6) A drive-through facility is prohibited.

Source: Ord. 20080131-135; Ord. 20090521-017; Ord. 20120614-055.

Overview

- Location: Austin, TX
- Population: Approximately 11,000 residents
- Number of Homes: Nearly 3,500

Anderson Mill Limited District

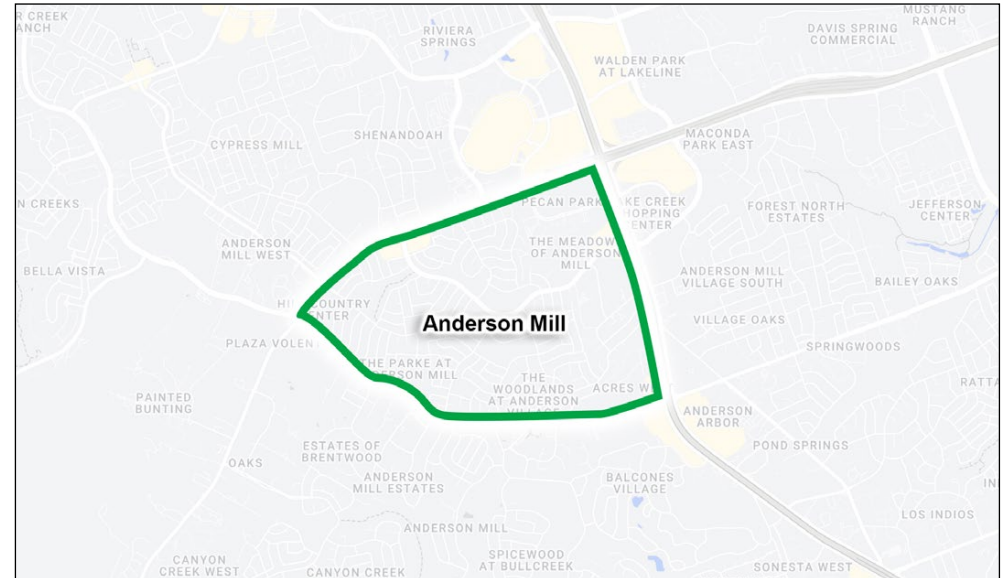
- Mission: To provide safe, accessible recreation programs, facilities, and parks for the Anderson Mill community.
- Parkland: 60 acres of parks and greenbelts, maintained biweekly.

Amenities:

- Pools: 2 year-round pools with 110,000–120,000 annual visitors.
- Recreational Facilities:
- 8 lighted tennis courts
- 6 miles of hike/bike trails
- 6 playgrounds
- 3 sand volleyball courts
- 2 basketball courts
- Outdoor racquetball court
- Fitness center and community center
- Senior center

Programs Offered:

- Yoga, tai chi, water aerobics, and various fitness classes
- Swim teams and "Learn to Swim" programs
- Summer camps and after-school programs
- Community events: Movies in the Parks, Movies at the Pools, neighborhood activities



Schools:

- Elementary Schools: 2 within district boundaries
- Middle School: 1 within district boundaries
- High School: Westwood High School, nationally ranked as one of the top schools

Transportation & Access:

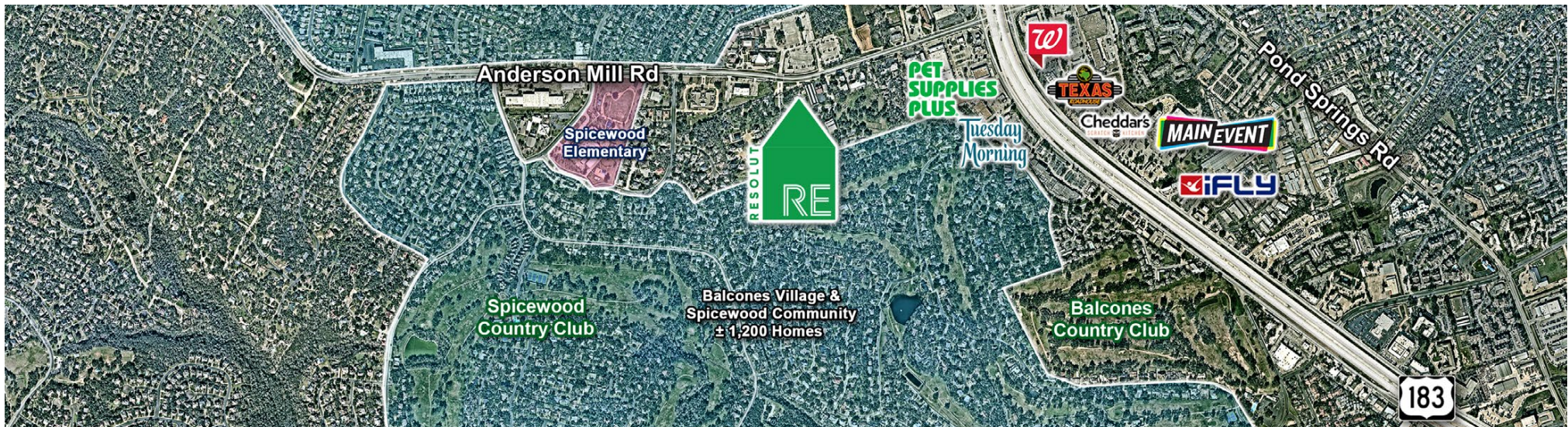
- Highways: Highway 183 and State Highway 45
- Public Transit: Capital Metro Lakeline train station and bus service
- Nearby Shopping:
 - Lakeline Mall (less than 1 mile away)
 - Arboretum and The Domain (short drive)

Community Focus:

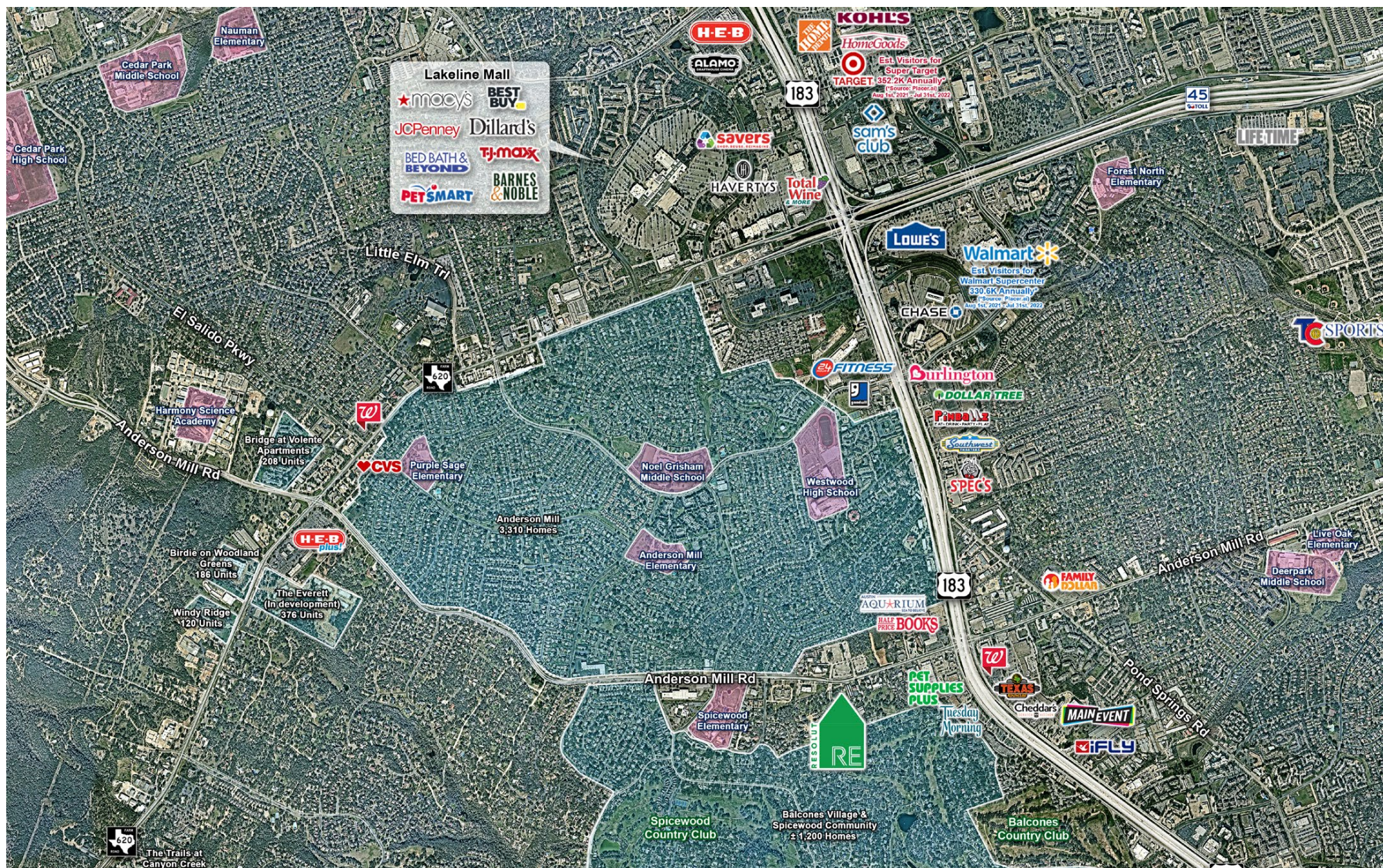
Anderson Mill offers a connected neighborhood with diverse amenities, education options, and convenient access to shopping and major employers in the Austin area.

BALCONES VILLAGE & SPICEWOOD COMMUNITY

- Balcones Village and the Spicewood community, directly south of the subject property at 9815 Anderson Mill, consists of around 1,200 homes surrounding Balcones Country Club and its golf courses. Located in far northwest Austin, the neighborhood features winding streets, large oak trees, and a peaceful, natural setting. Known for its strong sense of community, many second-generation families have returned to raise their children here.
- Originally built in the 1970s, homes in Balcones Village vary in style, with some maintaining their original features while others have been updated to modern standards. Many homes back onto the golf course or sit on private, wooded lots. The neighborhood offers a desirable location in a top-rated school district.
- As of 2023, the property tax rate in Balcones Village is 1.8688%, down from 2.04099% in 2022 and 2.2378% in 2021.









AUSTIN AGUILAR
ASSISTANT VICE PRESIDENT

512.474.5557

aaguilar@resolutre.com

Austin Aguilar graduated in 2021 with a BBA in Finance and then joined RESOLUT RE excelling as a Research Associate. During his first year with the company, he completed his MBA from the McCoy College of Business at Texas State University. Austin has been mentored by some of the best brokers in the region. He quickly secured a position as a full-time commercial advisor and earned the company's Rookie of the Year award in 2022. As a native to the city of Austin, he is able to use his extensive knowledge of the city to help his tenant and landlord clients fulfill their real estate needs. Currently as Assistant Vice President, Austin represents prominent Landlords, including ACR Property Management, Malabar Hill Capital, FMOC, LTD, and Routh Properties, as well as Tenants such as Studio Pilates and Circle K.

Austin's achievements in Commercial Real Estate have also been recognized with accolades that include winning the CREXI Power Broker award in 2022 and being named an Austin Business Journal Heavy Hitter in 2022 and 2023. He is also an active member of the International Council of Shopping Centers (ICSC).

FOR MORE INFORMATION PLEASE VISIT:

resolutre.com

AUSTIN

901 S Mopac Expwy
Bldg 2, Suite 350
Austin, Texas 78746

DALLAS

5151 Belt Line Rd
Suite 620
Dallas, Texas 75254

HOUSTON

3700 W Sam Houston Pkwy
Suite 450
Houston, Texas 77042

SOUTH TEXAS

4900 W. Expwy 83
Suite 260-J
McAllen, Texas 78501

LOUISIANA

600 Jefferson Street
Suite 407
Lafayette, Louisiana 70501

ALBUQUERQUE

2155 Louisiana Blvd N.E.
Suite 7200
Albuquerque, NM 87110

EL PASO

Affiliate Office
6006 N. Mesa St.
Ste. 110
El Paso, TX 79912



MATT STONE
COMMERCIAL ADVISOR

512.474.5557

mstone@resolutre.com

Matt Stone is an emerging talent in commercial real estate, currently serving as a Commercial Advisor at RESOLUT RE. With a solid foundation from the University of Texas, where he earned his degree in History and Sociology and a Teaching certificate through the UTeach Liberal Arts program. Matt brings a unique blend of analytical skills and educational prowess to the industry. His leadership and interpersonal skills were honed during his tenure as CEO of Turn Ministries, a nonprofit college ministry, and he continues to leverage these soft skills to effectively guide clients through the complexities of commercial real estate.

Recently finishing third in Foresite Commercial Real Estate's CRE Launch Program, Matt has demonstrated impressive potential and a strong commitment to the field. Passionate about retail properties and dedicated to building a thriving community, Matt is poised to make significant strides in leasing and development.

Outside of his professional pursuits, he enjoys sports, spending quality time with his wife Hannah, and contributing as a deacon at his church.

FOR MORE INFORMATION PLEASE VISIT:

resolutre.com

AUSTIN

901 S Mopac Expwy
Bldg 2, Suite 350
Austin, Texas 78746

DALLAS

5151 Belt Line Rd
Suite 620
Dallas, Texas 75254

HOUSTON

3700 W Sam Houston Pkwy
Suite 450
Houston, Texas 77042

SOUTH TEXAS

4900 W. Expwy 83
Suite 260-J
McAllen, Texas 78501

LOUISIANA

600 Jefferson Street
Suite 407
Lafayette, Louisiana 70501

ALBUQUERQUE

2155 Louisiana Blvd N.E.
Suite 7200
Albuquerque, NM 87110

EL PASO

Affiliate Office
6006 N. Mesa St.
Ste. 110
El Paso, TX 79912