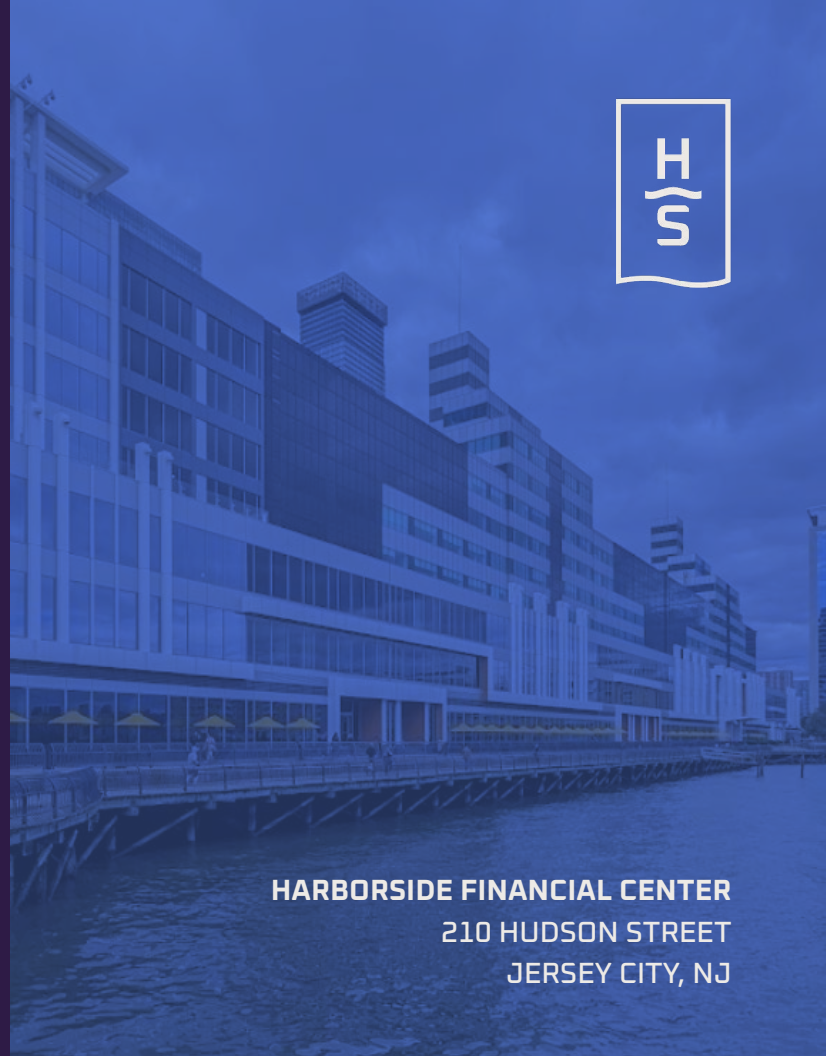


FOR
SUBLEASE



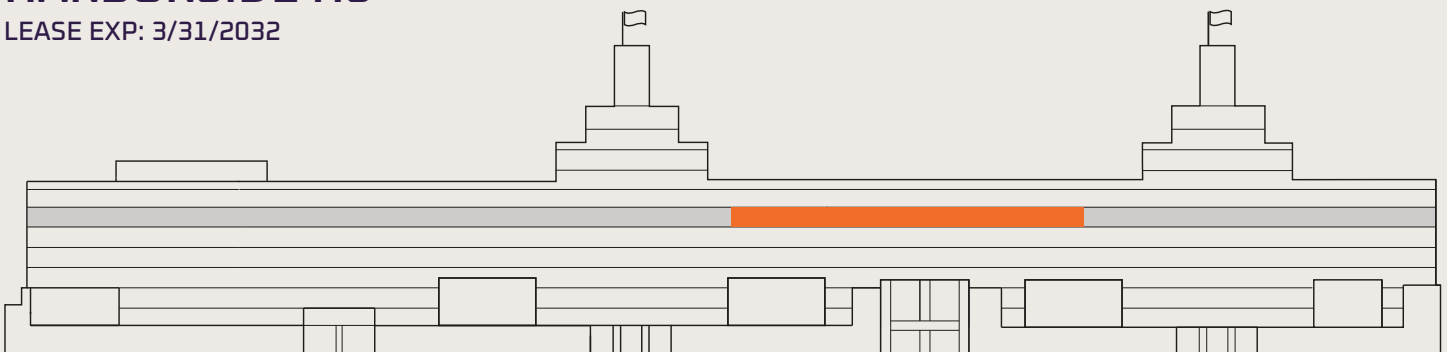
210 HUDSON STREET



HARBORSIDE FINANCIAL CENTER
210 HUDSON STREET
JERSEY CITY, NJ

HARBORSIDE H3

LEASE EXP: 3/31/2032



7TH FLOOR

±47,398 SF

**AVISON
YOUNG**

William McCaffrey
Principal
D +1 973 753 1102 | C +1 201 826 8861
william.mccaffrey@avisonyoung.com



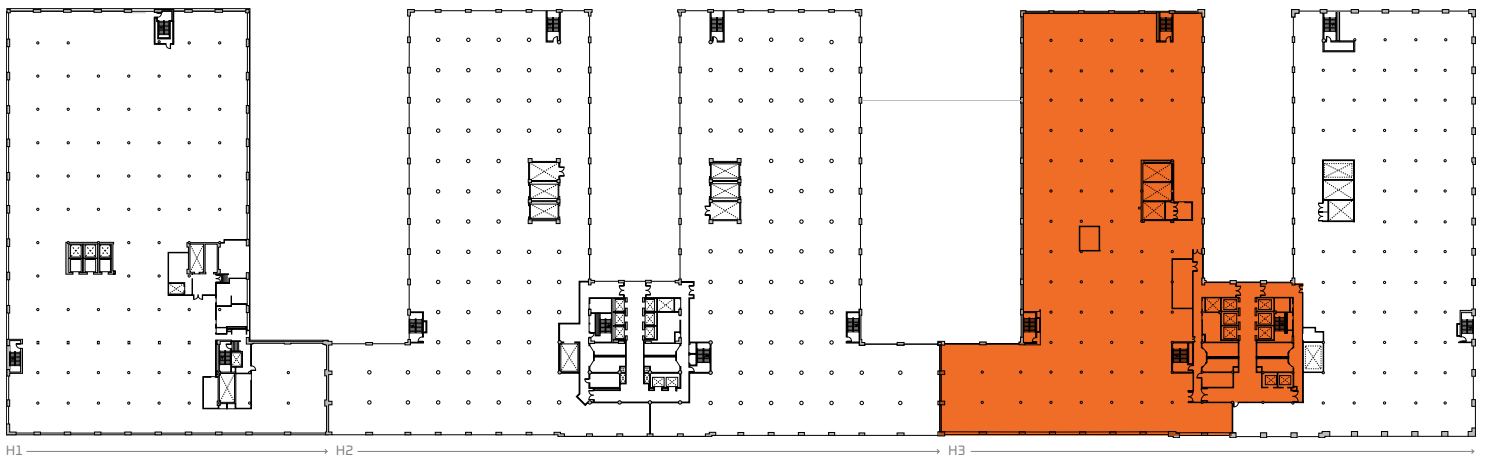
Spanning 1,000 feet of stunning Hudson River waterfront, Harborside is a 2-million-square-foot, next-generation workplace and Jersey City's new complete destination. With panoramic views, unbeatable transit access, and unmatched retail, restaurants, and entertainment, Harborside invites all to work, dine, shop, and celebrate overlooking the stunning waterfront skylines.

HARBORSIDE H3

LEASE EXP: 3/31/2032

7TH FLOOR

±47,398 SF



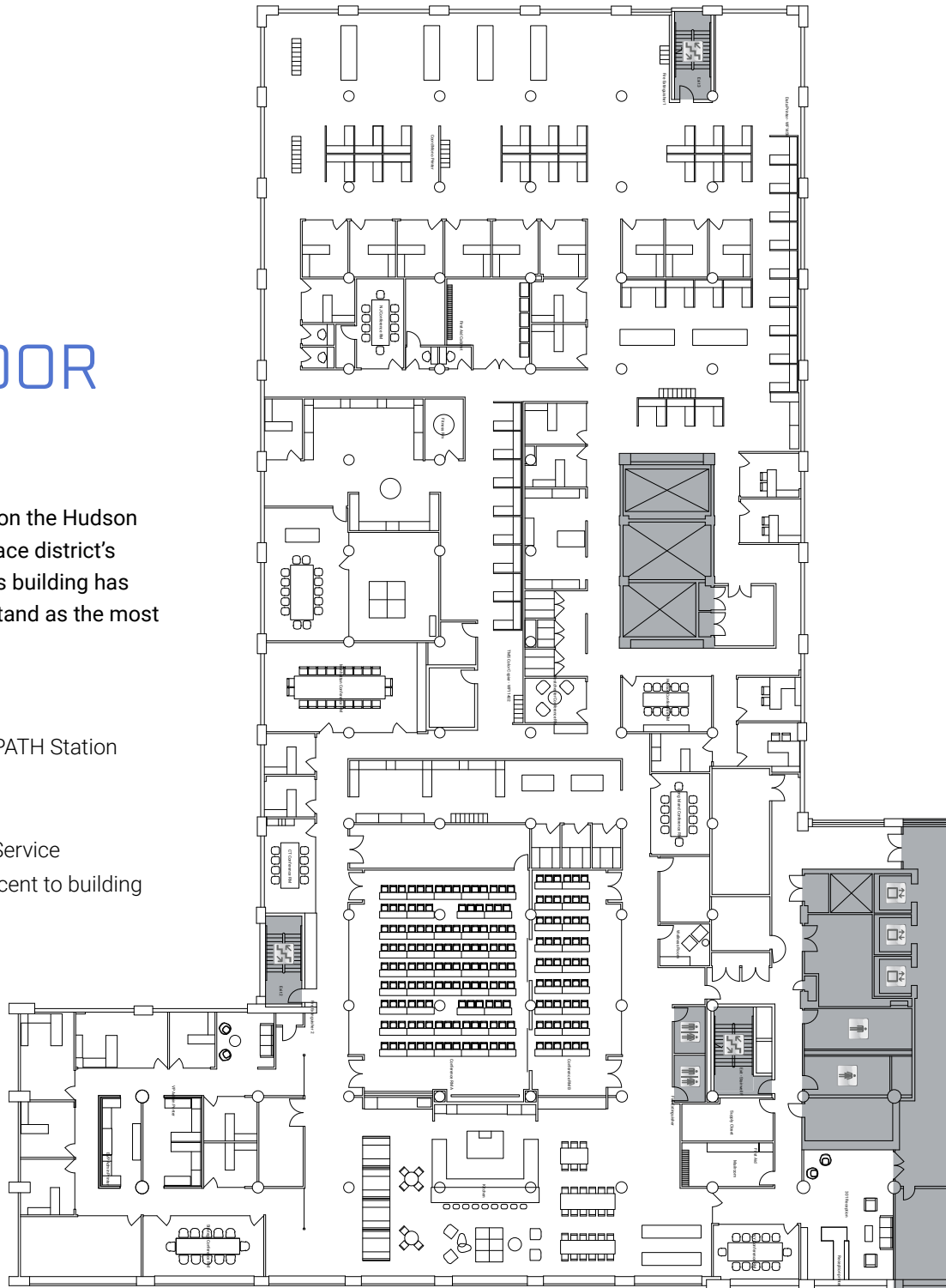
FOR
SUBLEASE

FLOOR PLAN H3 • 7TH FLOOR ±47,398 SF

H3 represents a landmark destination on the Hudson Waterfront. As one of the Exchange Place district's original commercial developments, this building has been renovated, reinvented, and now stand as the most well-positioned complex in the market.

Building Features and Amenities

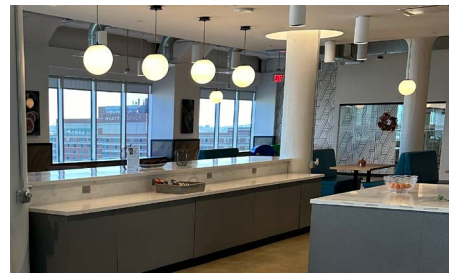
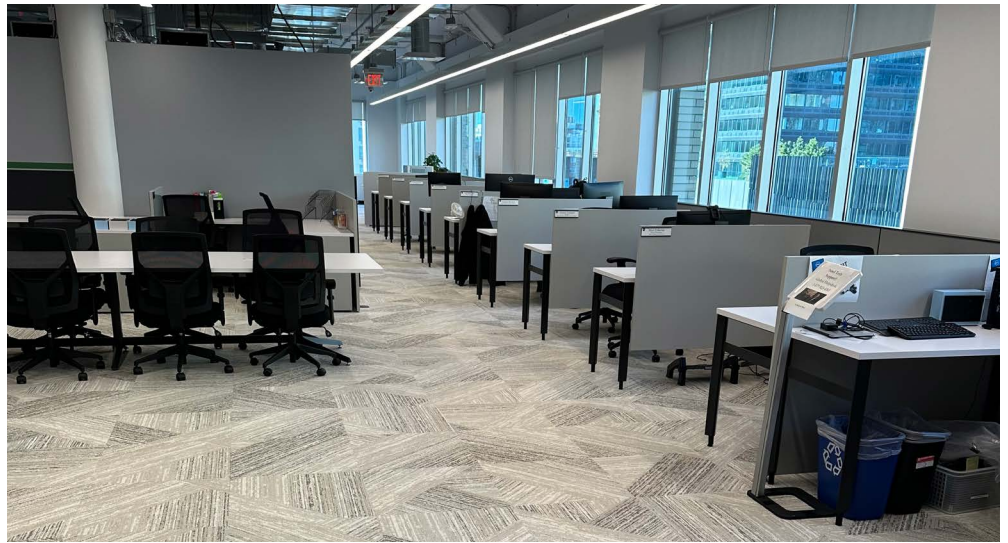
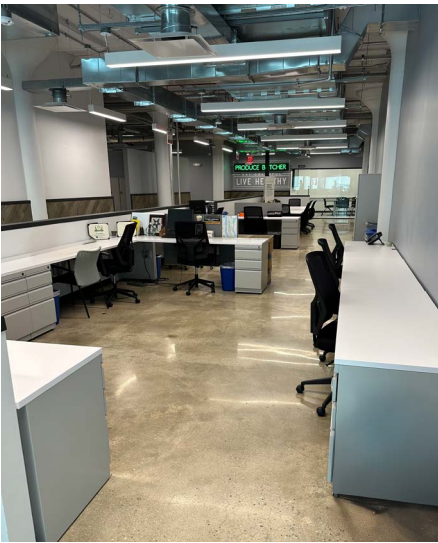
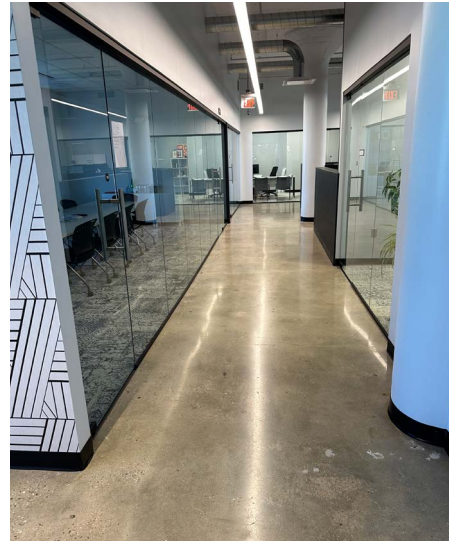
- Access to adjacent Exchange Place PATH Station
- On-site N.Y. Ferry stop
- On-site NJ Light Rail station
- 10 minutes to NJ Transit Bus & Rail Service
- 1,100 dedicated parking spaces adjacent to building
- On-site bicycle access and storage
- Secured parking for 100 stalls
- 24/7 Security
- On-site Café
- On-site Gym



INTERIOR GALLERY

H3 • 7TH FLOOR

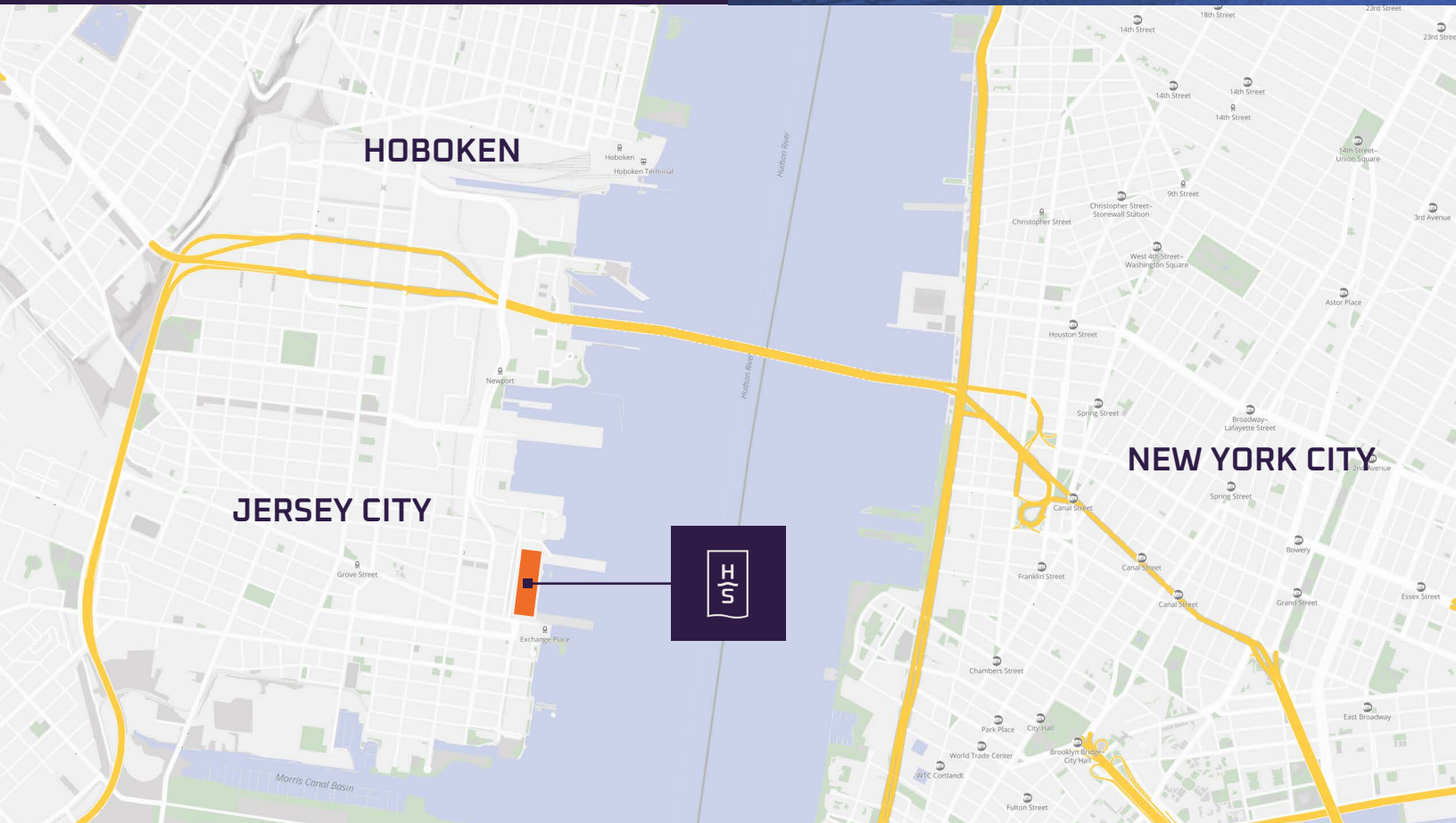
FOR
SUBLEASE



FOR
SUBLEASE

HARBORSIDE FINANCIAL CENTER
210 HUDSON STREET
JERSEY CITY, NJ

LOCATION
H3 ▪ 7TH FLOOR



**AVISON
YOUNG**

William McCaffrey
Principal
D +1 973 753 1102 | C +1 201 826 8861
william.mccaffrey@avisonyoung.com