

Sunset Row

Silver Lake

S — R



Silver Lake

Los Angeles

3225 Sunset Blvd

12,656 SF Creative Compound

announcing
Open
Yoga breathwork meditation
est. Venice, CA

Sunset Row honors the past while creating new spaces for the future.

A midcentury compound in LA's creative capital.

Open

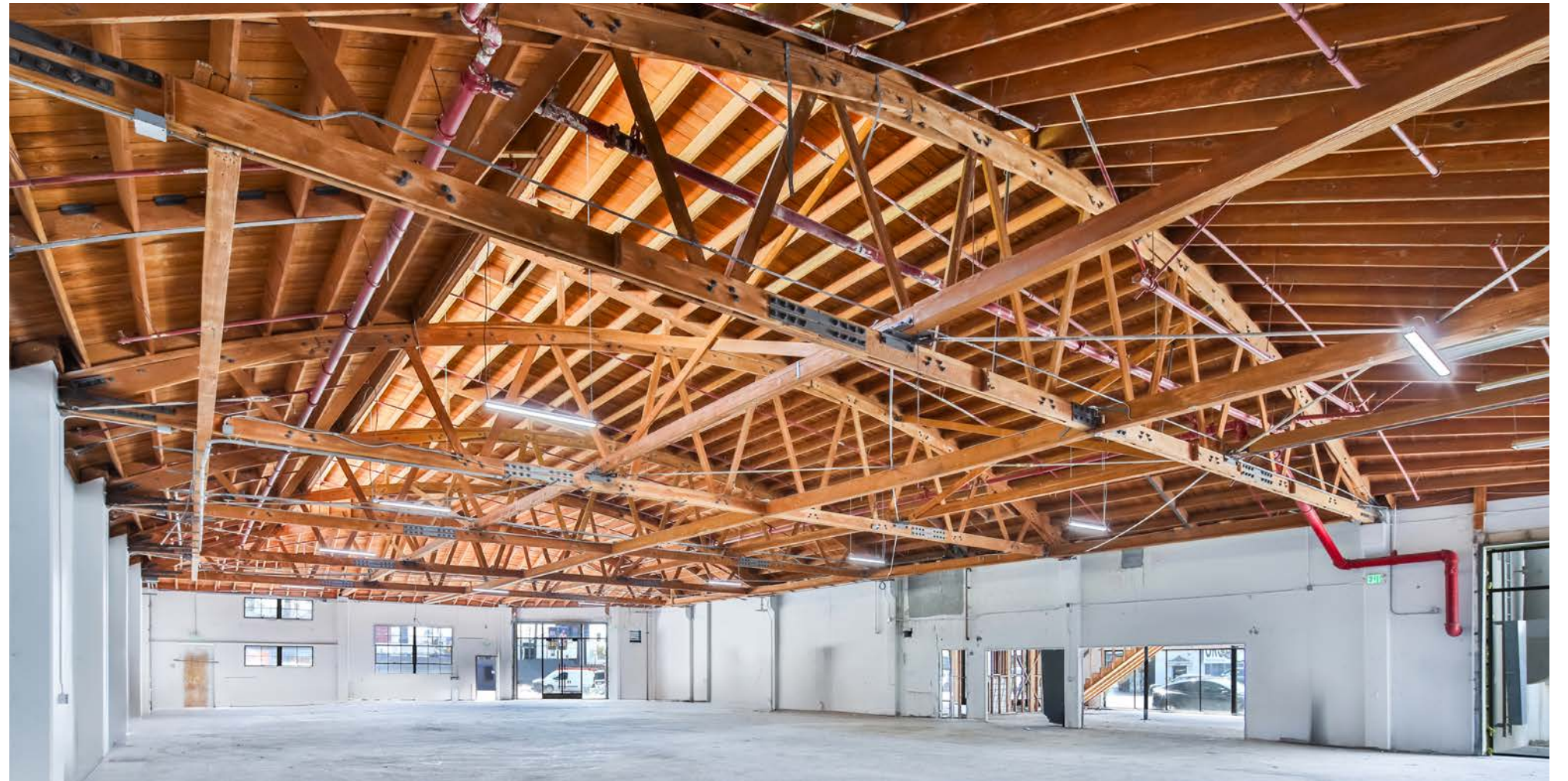
The image consists of two parts. The main part is a wide architectural rendering of a modern building complex at dusk. The building features a mix of dark, textured facades and large glass windows that are illuminated from within, showing interior spaces with people. A prominent palm tree stands on the left. In the background, other buildings and a hillside with more structures are visible under a twilight sky. The foreground shows a street with light trails from passing vehicles. The bottom right corner contains a smaller, inset photograph of the same building during the day. This photo shows the building's exterior in natural light, highlighting its concrete and glass materials. A silver car is parked on the street in front of it, and the surrounding urban environment is clearly visible.



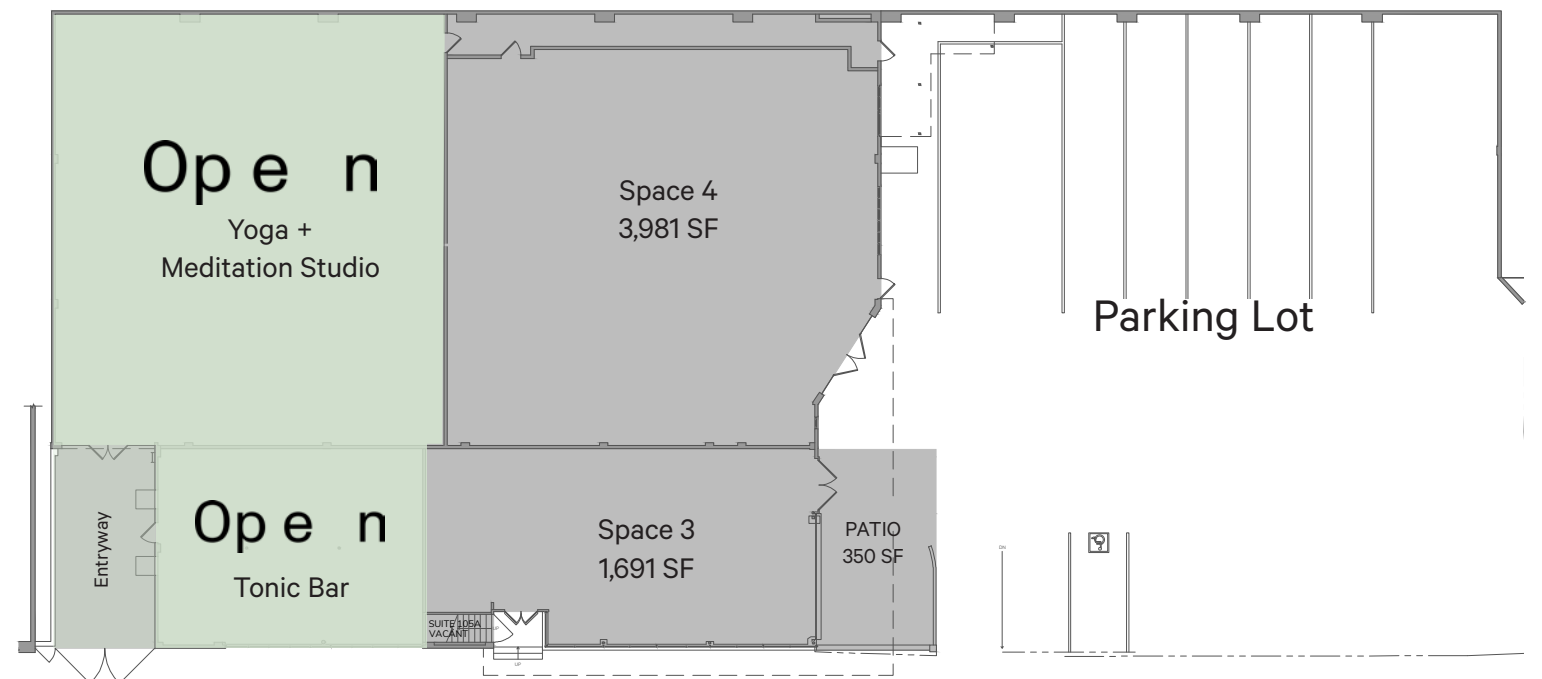
3225 Sunset

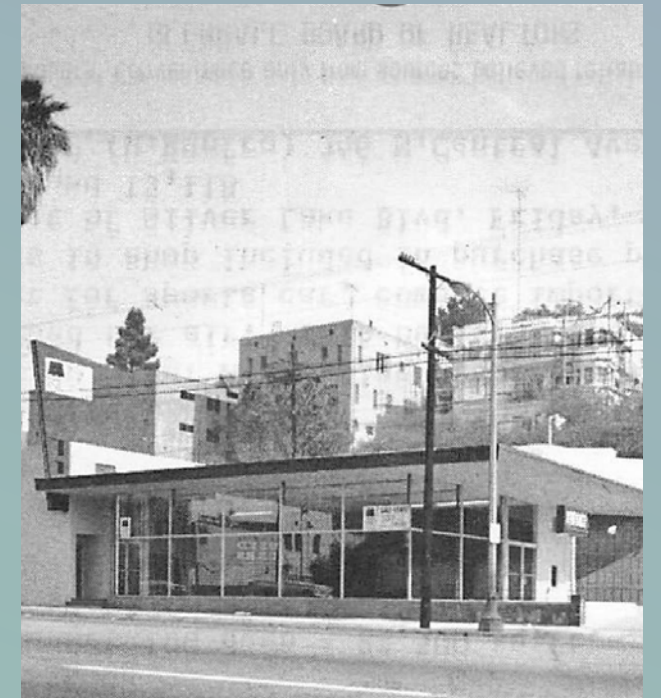
Features

- 11,000 sq. ft. total ground floor
- 1,660 sq. ft. of office (for lease)
- Divisible from 1,691 - 3,981 sq. ft.
- Lot for parking + outdoor activations
- Expansive bow truss ceilings
- Warm shell delivery for qualified users



S — R





The former Chevrolet dealership features a nouveau hybrid bow-truss and offers a raw canvas for expression.





The epicenter
of culture.

Beneath the foothills of the
architecturally significant
homes and natural landscape
of Silver Lake, Sunset Row
is the heart of the shopping
and dining experience on
Sunset Blvd.



B
new balance

AKILA



FREE PEOPLE

LOQUAT

BAGGU

**(MALIN+
GOETZ)**

**GOLDEN
AGE**

**DS&D
URGA**

BARdi bello

SUNSPEL
ENGLAND 1860

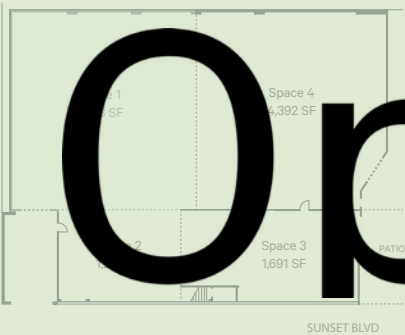
FILSON
SINCE 1897

Spaces #1

Features

- Divisible from 3,700 SF
- Stunning bow-truss roof
- Limitless uses from office to event space
- Warm shell delivered in 2025

LEASED



Open

Open is a mindfulness studio for everyone. A place to come to your senses — meditation, music, breathwork and movement awaken your body and mind.

COMING Q4 2025



Space #2

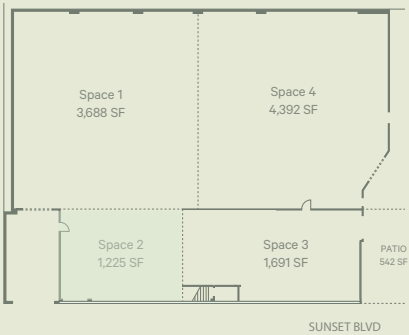
Features

- 1,225 SF with prime Sunset visibility
- Private entrance off vestibule
- Ideal for retail, service and non-vented food
- Warm shell delivery w/ HVAC and all utility stubs



Open

Tonic Bar



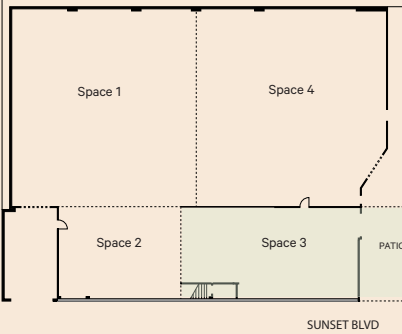
COMING Q4 2025



Space #3

Features

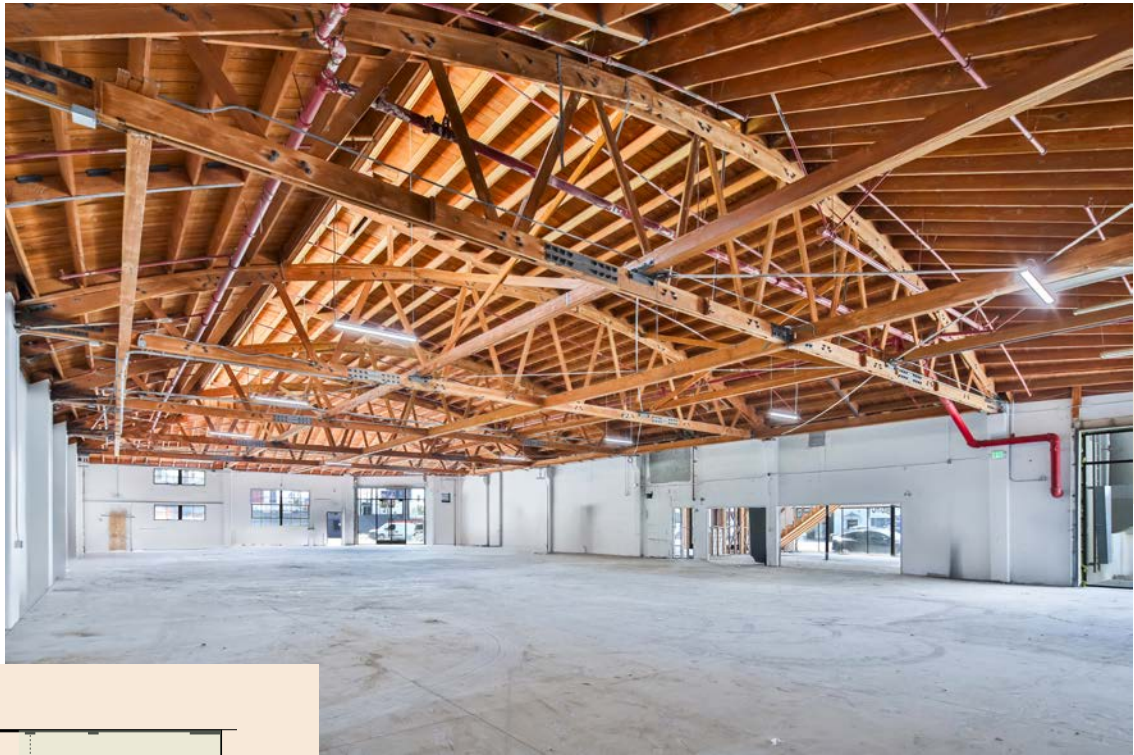
- 1,691 SF + 350 SF patio
- Glass jewelbox with unmatched visibility on Sunset
- Ideal for flagship retail or all-day restaurant.
- Warm shell delivery w/ HVAC and all utility stubs



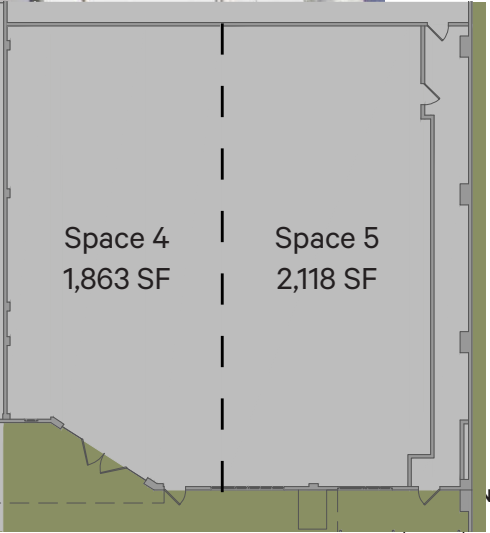
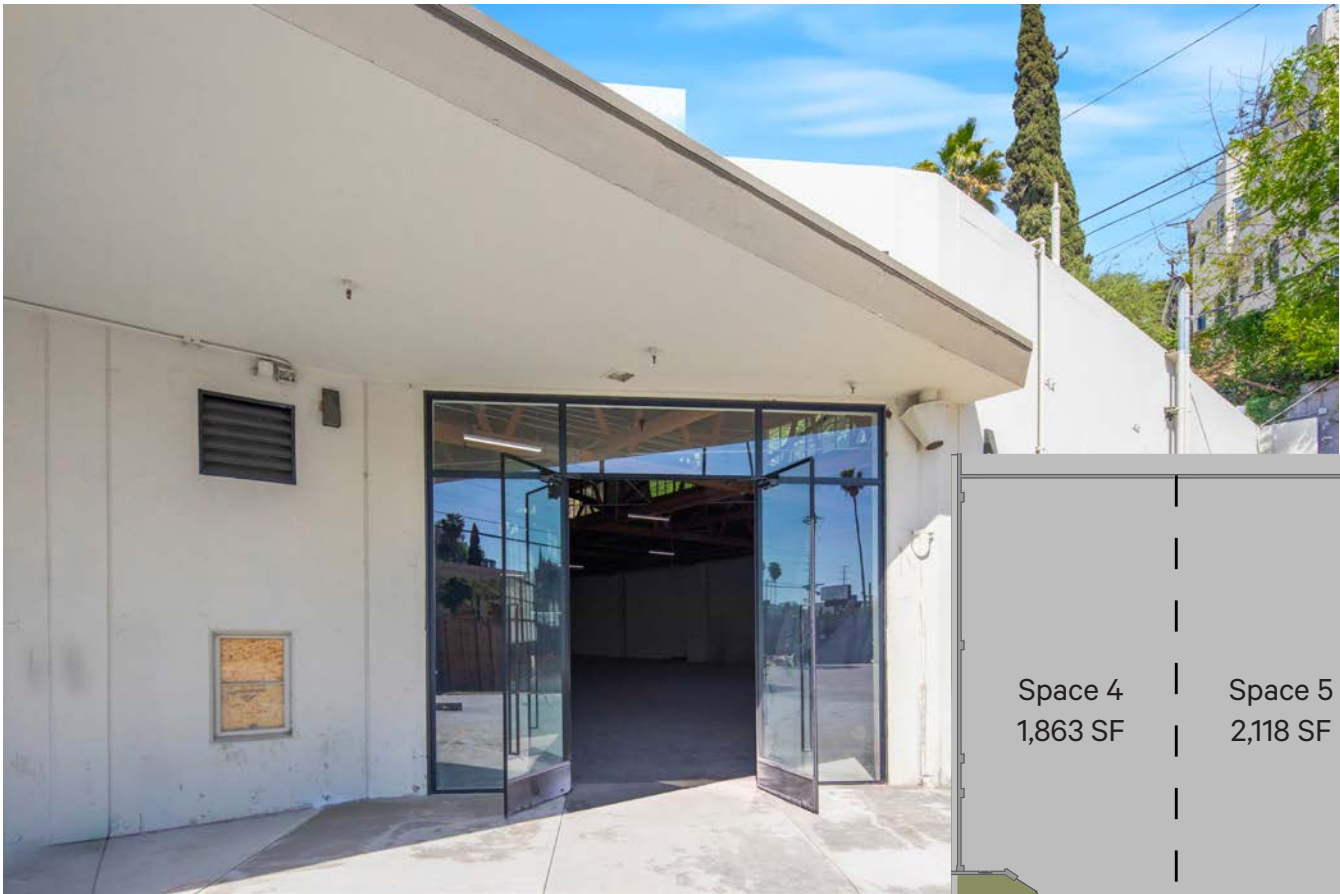
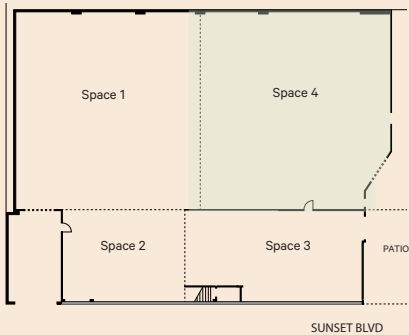
Spaces #4 - 5

Features

- Divisible from 1,863 - 3,981 SF
- Stunning bow-truss construction with skylights
- Limitless uses from flagship retail, F&B, fitness and more
- Warm shell delivery w/ HVAC and all utility stubs
- Direct access to parking with westbound Sunset visibility.



S — R



Outdoor Engagement

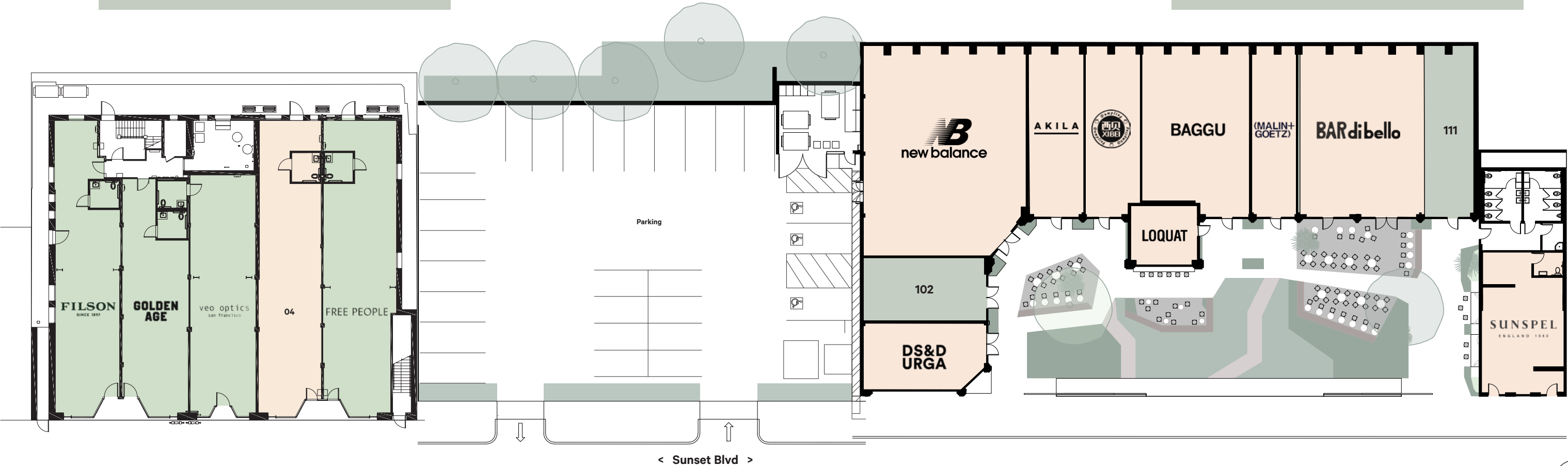
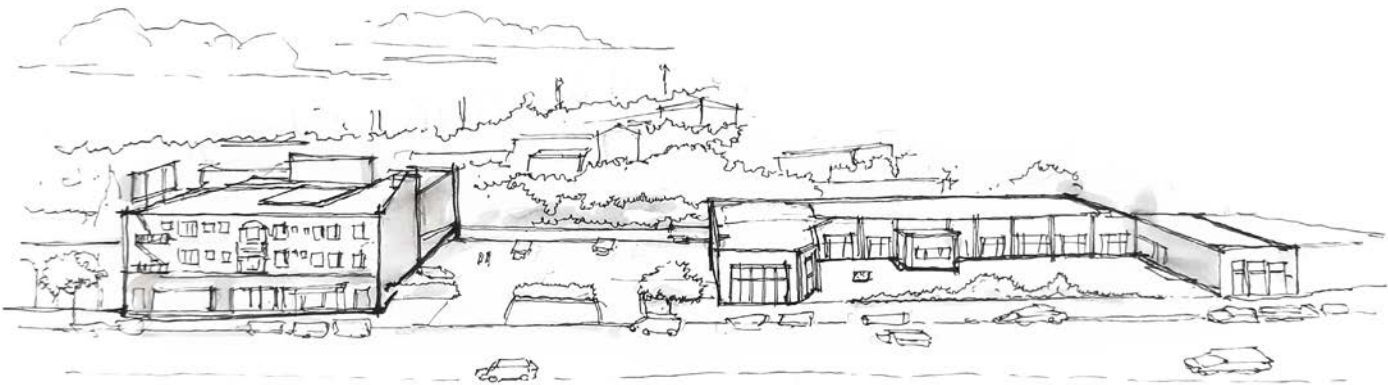
Suitable for parking and other outdoor activations, this rare outdoor lot offers parking for up to 34 vehicles (to be verified) and gathering spaces for intimate and vibrant engagement.



3210 - 3300 Sunset

(across the street)

Introducing our first edition of retail spaces that will welcome the next wave of Silver Lake's renaissance. A creative collection of retail, restaurant and service spaces that will be a cultural hub of the community.





Intelligentsia. Bowery Bungalow. Mohawk General Store.

Salt & Straw. Millie's Café.



Courtesy of Night + Market

Night+Market Song. Café Stella.

Cafe Kitsune.. The Friend. Alimento. Blair's.



Sweetgreen.

Le Labo.



Warby Parker. A.P.C. Aesop. Clare V. Dr. Martens.

Omakase by Osen. Pizzana.. Heavy Handed.



red Coffee.

Osen Izakaya. Erewhon.



Courtesy of Danielle Adams

Maison Kitsuné. Silver Lake Ramen.

Wasteland. La Colombe. Playita. Wittmore.



Mashti Malone.

Dayglow. Parachute Home. Moon Juice. Van Leeuwen. Tartine.

Byredo.



Tacolina. Tenants of The Trees. Undeclared.

Buck Mason.



The Win-Dow. Heyday. Botanica. Bacari.



Silver Lake Farmers Market. Café Tropical.



Pine & Crane.

Sunset — Row

3225 Sunset Blvd.,
Silver Lake, CA 90026

www.sunsetrow.com

Represented by

CBRE

Zachary Card

310-497-5218
zachary.card@cbre.com
Lic. 01717802

Erik Krasney

323-270-1920
erik.krasney@cbre.com
Lic. 01970585

Ryan Gurman

310-650-7545
ryan.gurman@cbre.com
Lic. 01972081

Developed by

RYDA