

# BUILDING LEASE AVAILABLE

## LAKWOOD MEDICAL OFFICE

3300 E. SOUTH ST. | LONG BEACH, CA



### PROPERTY FEATURES:

- **Free Tenant Improvements**
- **Suite 207 - ± 874 SF**
- **Suite 301B - ±1,506 SF**
- Abundant surface free parking
- Long term stable ownership
- Tenant improvements to suit your needs
- Onsite maintenance staff
- One block from Lakewood Regional Medical Center
- Current tenants include:
  - Lakewood Eye Physicians
  - The Oncology Institute of Hope & Innovation
  - Southland Renal Medical Group



For More Information, Contact:

**JUSTIN SMITH, SIOR**

Senior Vice President

CalBRE 01504494

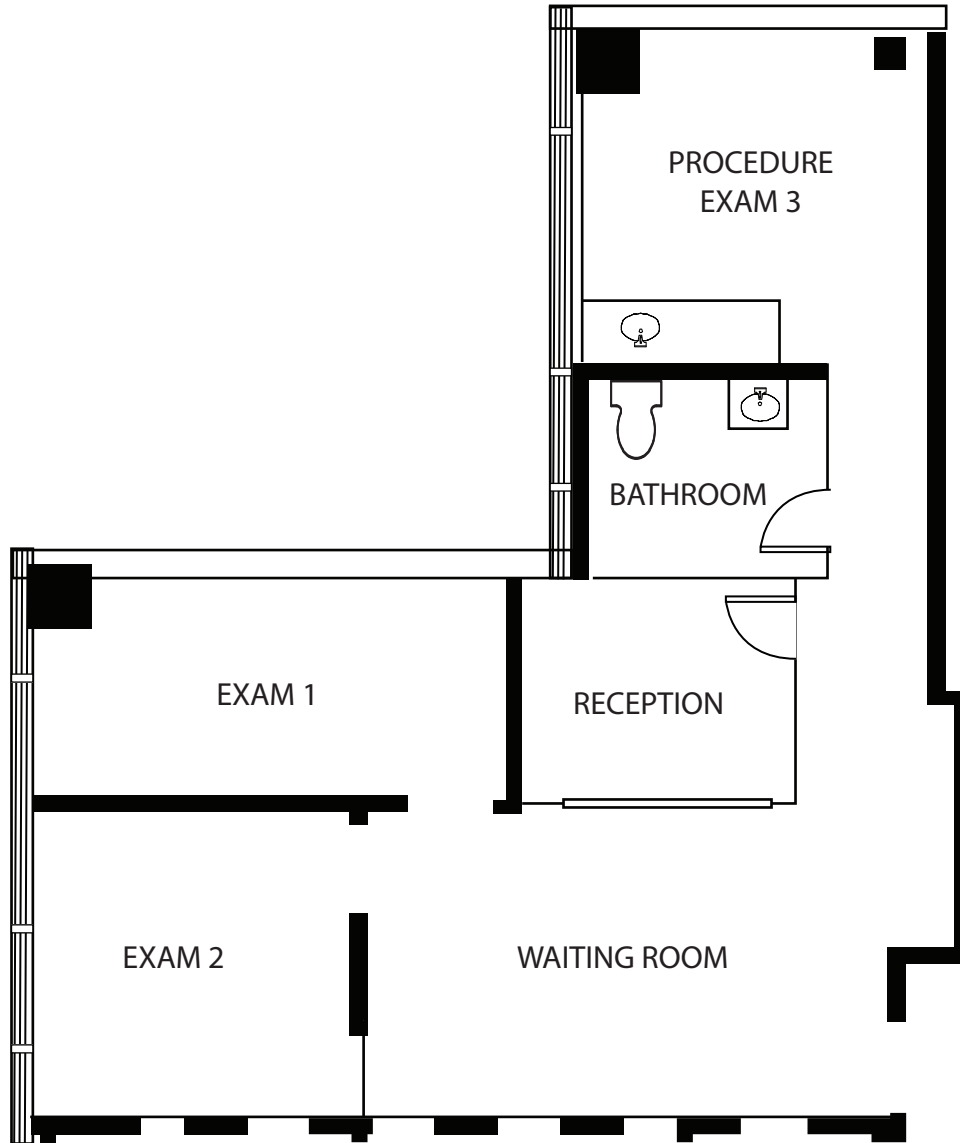
949.790.3151

[jbsmith@lee-associates.com](mailto:jbsmith@lee-associates.com)

# BUILDING LEASE AVAILABLE

## LAKESWOOD MEDICAL OFFICE

3300 E. SOUTH ST. | LONG BEACH, CA



### SUITE FEATURES:

**Suite 207 - ±874 SF:** Ready to move in medical space with three exam room/offices, waiting room, reception and bathroom. Current ophthalmologist tenant has an emergency, has to leave the State asap, can take over equipment, patients and staff, or available without equipment and patients.



# BUILDING LEASE AVAILABLE

## LAKEWOOD MEDICAL OFFICE

3300 E. SOUTH ST. | LONG BEACH, CA

### SUITE 301B ±1,506 SF

