



For Lease
Ready to Occupy Suites

Crown Pointe Business Centre
8501 Brimhall Rd Bakersfield, CA

Scott Wells
Senior Vice President | Principal
License No. 01126196
+1 661 631 3822
scott.wells@colliers.com

David Williams, SIOR
Senior Vice President | Principal
License No. 00855489
+1 661 631 3816
david.a.williams@colliers.com

Colliers International
10000 Stockdale Hwy, Suite 102
Bakersfield, CA 93311
+1 661 631 3800
www.colliers.com/bakersfield

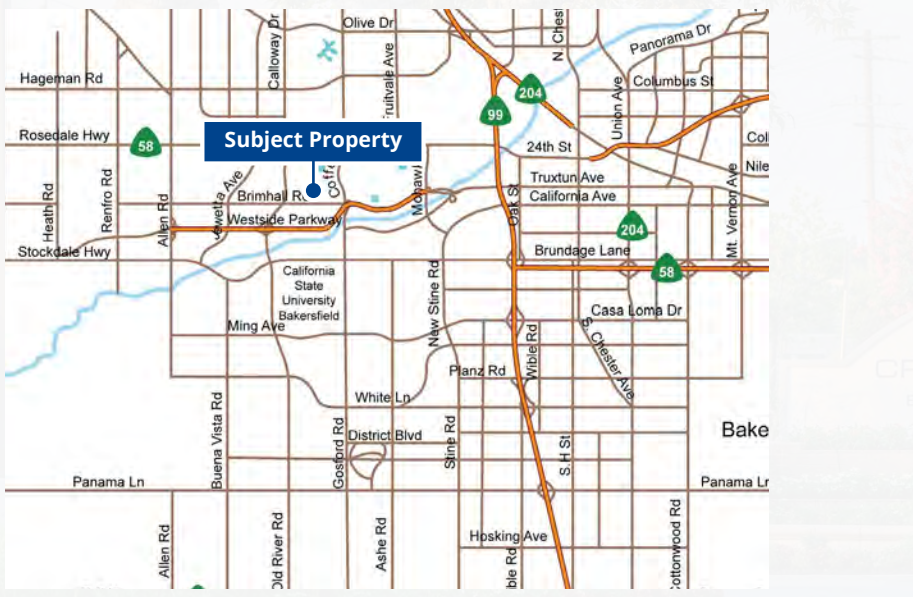


Property Information

Crown Pointe is a 195,000 square foot medical and professional office in 20 buildings. The project is located on Brimhall Road just west of Coffee Road near the Westside Parkway on/off ramps and offers excellent access to the entire city.

- **Ready to occupy!**
- Westside Parkway visibility
- Monument signage
- Parking exceeds code
- Great synergy with neighboring tenants
- Ready for immediate occupancy

Vicinity Map



Availability

8501 - Building 200, Suite 201 2,178 sf - General Office/Physical Therapy

8501 - Building 200, Suite 202 4,414 rsf - General Office

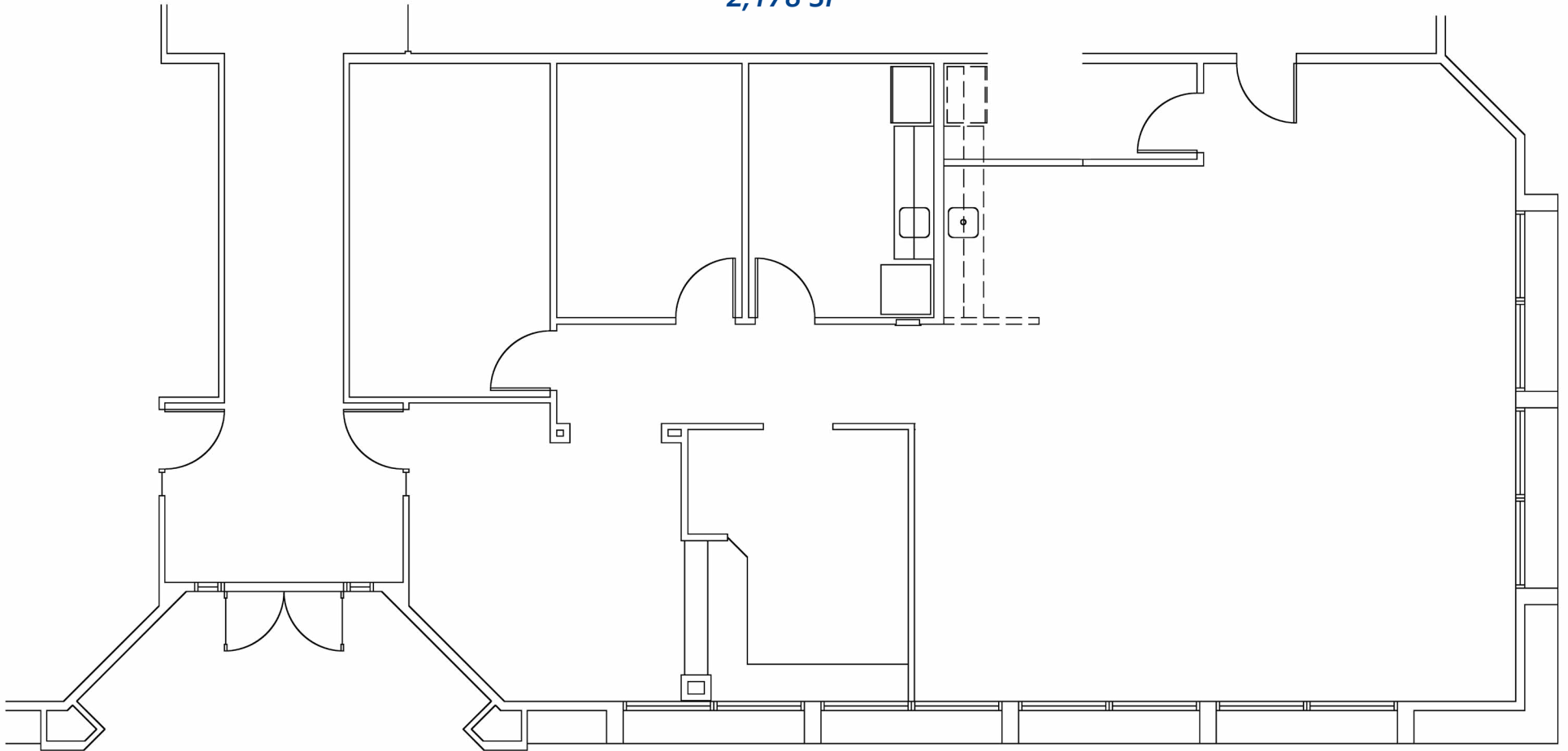
Lease Rate

\$2.05/SF, Adjusted Gross - 8501 Brimhall Rd

This document/email has been prepared by Colliers for advertising and general information only. Colliers makes no guarantees, representations or warranties of any kind, expressed or implied, regarding the information including, but not limited to, warranties of content, accuracy and reliability. Any interested party should undertake their own inquiries as to the accuracy of the information. Colliers excludes unequivocally all inferred or implied terms, conditions and warranties arising out of this document and excludes all liability for loss and damages arising there from. This publication is the copyrighted property of Colliers and/or its licensor(s). © 2024. All rights reserved. This communication is not intended to cause or induce breach of an existing listing agreement

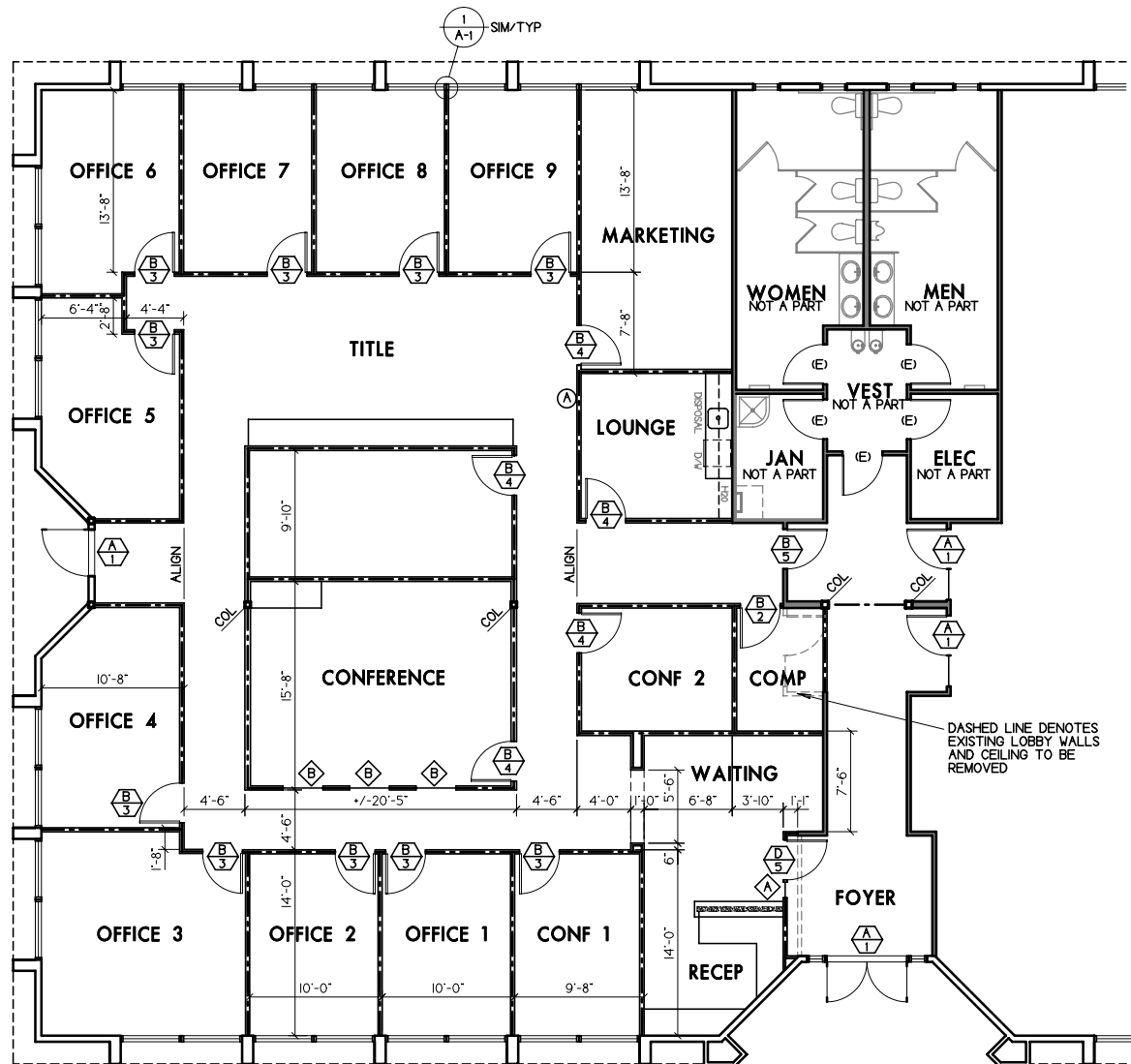
Floor Plan

*8501 Brimhall Road
Building 200, Suite 201
(Formerly Physical/Therapy)
General Office Suite
Available
2,178 SF*



Floor Plan

8501 Brimhall Road
Building 200, Suite 202
General Office Suite
Available
4,414 RSF / 3,916 USF



Site Plan

