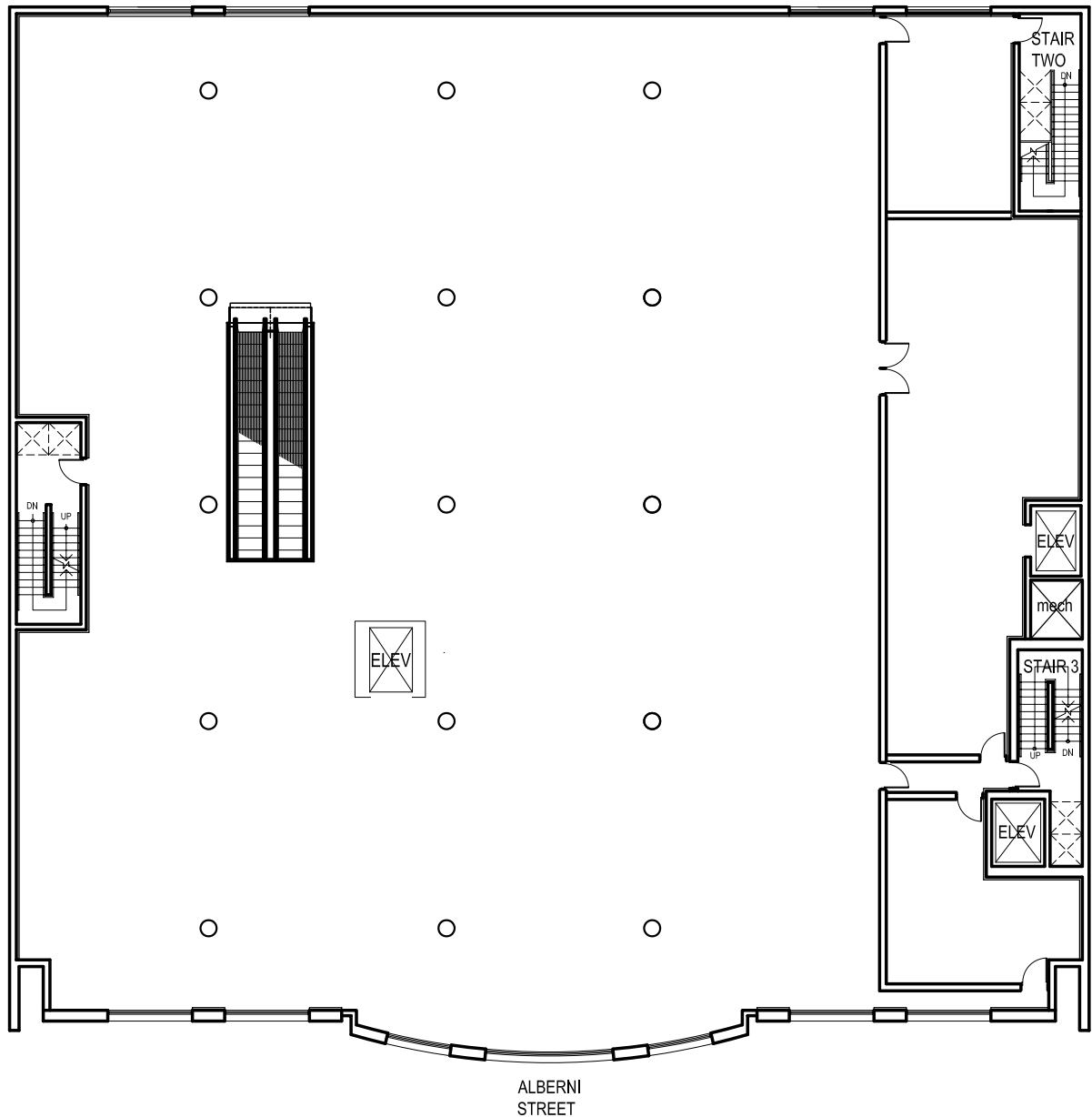


1022 Alberni Street, Vancouver

BASIC RENT: CONTACT LISTING AGENT

Rentable Area: 15,900sf | Available Immediately

Full floor office opportunity with private elevator access and large windows facing Alberni Street.



JOHN FREDERICKSON

604 975 9004

jfrederickson@warringtonpci.com

300 – 1030 West Georgia St., Vancouver, BC V6E 2Y3

E. & O.E.: The information contained herein was obtained from sources which we deem reliable, and while thought to be correct, is not guaranteed by Warrington PCI Management.



WARRINGTON PCI
MANAGEMENT