



Offering Summary

Property Type:	Industrial
Lease Rate:	\$10,500.00 total per month*
Available SF:	9,100 SF
Year Built:	1998
Zoning:	M-SC

Property Overview

This approximate 9,100 sf stand alone industrial building was recently remodeled, and features an recently completed and entirely new office area, with new restrooms. The interior office consists of a reception area, (2) private offices with windows, a kitchenette, and a restroom. The warehouse has also been remodeled, and features a new restroom, new LED lighting throughout, new evaporative coolers, (5) 12' roll-up doors, an approximate 16' clear height, 600 amp IID electricity, and a secured yard with moveable loading dock (at no additional charge). The entire building is fire sprinklered.

*Lease rate is based on a new 5 year minimum lease term, Single Tenant Net lease form.

Location Overview

Located in the Valley Metroplex Business Park of Thousand Palms, CA . This site offers easy access to the entire Coachella Valley via the interstate 10 freeway, which is easily accessible through the Bob Hope interchange.

Matthew V. Johnson
760.779.4000 (Direct)
matt@johnsoncommercial.net
CalDRE #00927239

760.779.4000
72000 Magnesia Falls Drive
Rancho Mirage, CA 92270
www.johnsoncommercial.net



FOR LEASE
72110 Corporate Way
Thousand Palms, CA 92276



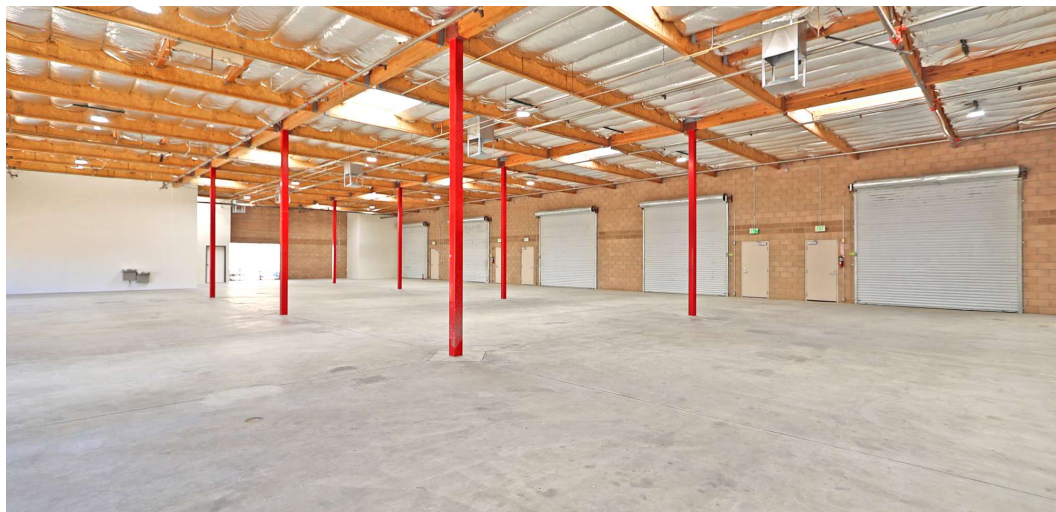
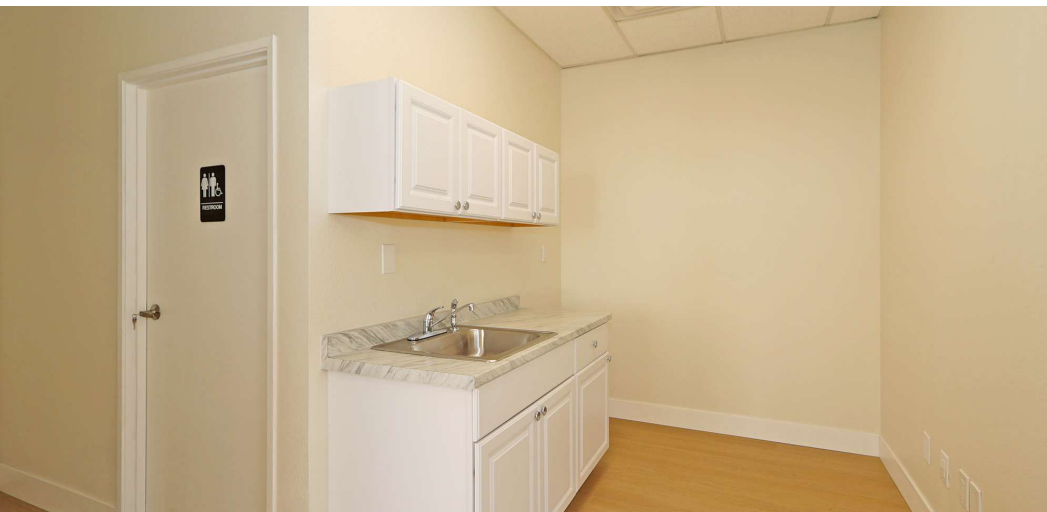
Matthew V. Johnson
760.779.4000 (Direct)
matt@johnsoncommercial.net
CalDRE #00927239

760.779.4000
72000 Magnesia Falls Drive
Rancho Mirage, CA 92270
www.johnsoncommercial.net

Johnson Commercial Copyright 2017. No warranty or representation, express or implied, is made to the accuracy or completeness of the information contained herein, and same is submitted subject to errors, omissions, change of price, rental or other conditions, withdrawal without notice, and to any special listing conditions imposed by the property owner(s). As applicable, we make no representation as to the condition of the property (or properties) in question.



FOR LEASE
72110 Corporate Way
Thousand Palms, CA 92276



Matthew V. Johnson
760.779.4000 (Direct)
matt@johnsoncommercial.net
CalDRE #00927239

760.779.4000
72000 Magnesia Falls Drive
Rancho Mirage, CA 92270
www.johnsoncommercial.net

Johnson Commercial Copyright 2017. No warranty or representation, express or implied, is made to the accuracy or completeness of the information contained herein, and same is submitted subject to errors, omissions, change of price, rental or other conditions, withdrawal without notice, and to any special listing conditions imposed by the property owner(s). As applicable, we make no representation as to the condition of the property (or properties) in question.

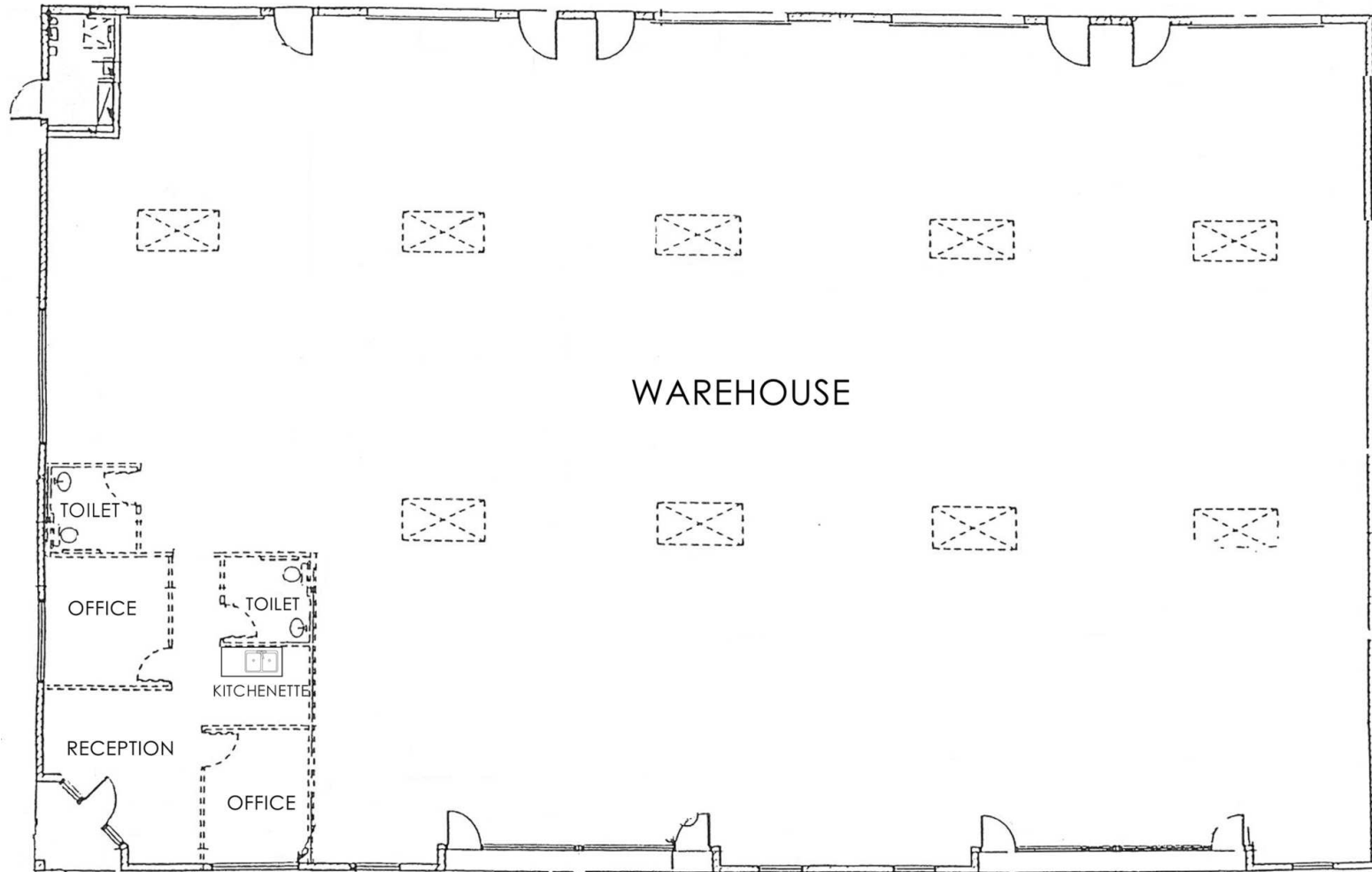


JOHNSON
COMMERCIAL REAL ESTATE

FOR LEASE

72110 Corporate Way
Thousand Palms, CA 92276

(Not to Scale)



Matthew V. Johnson
760.779.4000 (Direct)
matt@johnsoncommercial.net
CalDRE #00927239

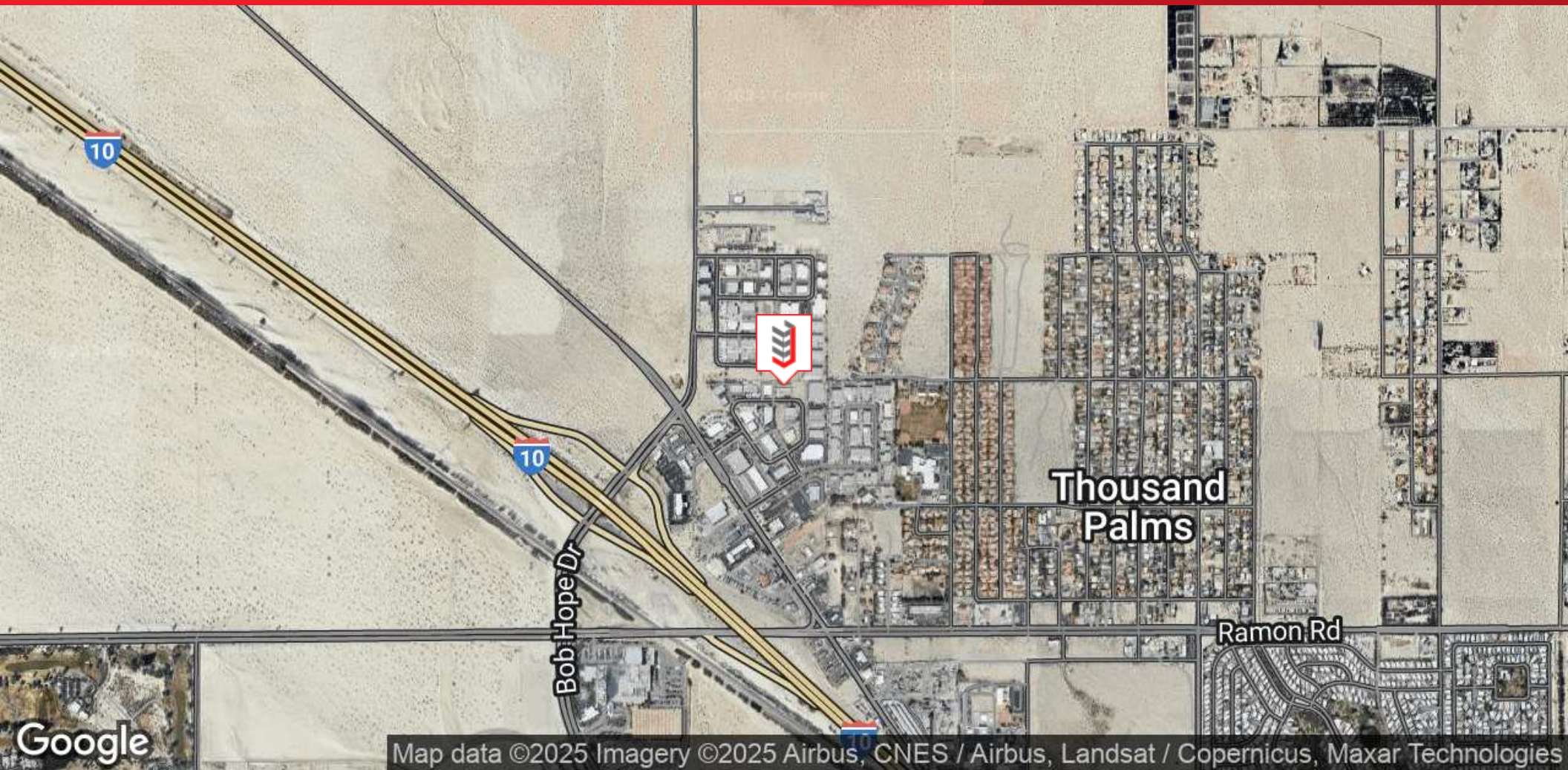
760.779.4000
72000 Magnesia Falls Drive
Rancho Mirage, CA 92270
www.johnsoncommercial.net

Johnson Commercial Copyright 2017. No warranty or representation, express or implied, is made to the accuracy or completeness of the information contained herein, and same is submitted subject to errors, omissions, change of price, rental or other conditions, withdrawal without notice, and to any special listing conditions imposed by the property owner(s). As applicable, we make no representation as to the condition of the property (or properties) in question.



FOR LEASE

72110 Corporate Way
Thousand Palms, CA 92276



Matthew V. Johnson
760.779.4000 (Direct)
matt@johnsoncommercial.net
CalDRE #00927239

760.779.4000
72000 Magnesia Falls Drive
Rancho Mirage, CA 92270
www.johnsoncommercial.net

Johnson Commercial Copyright 2017. No warranty or representation, express or implied, is made to the accuracy or completeness of the information contained herein, and same is submitted subject to errors, omissions, change of price, rental or other conditions, withdrawal without notice, and to any special listing conditions imposed by the property owner(s). As applicable, we make no representation as to the condition of the property (or properties) in question.