

# 4,595 SF OFFICE SPACE FOR LEASE

## HIGHWAY 111, PALM DESERT



**73301 HIGHWAY 111, PALM DESERT, CA**

### FEATURES

- 4,595 SF office/commercial space located on Highway 111 in the heart of Palm Desert
- Highly visible location between Monterey Ave and San Pablo Ave with excellent signage
- Freestanding former bank building with abundant parking
- One block north of El Paseo, the Coachella Valley's premier high-end shopping and dining corridor
- Impressive traffic counts of over 37,300 cars per day

**LEASE RATE: \$2.00/SF/MO NNN**

### COACHELLA VALLEY



**VICINITY MAP**



6/18/25 JC



**EMILY HARVEY**  
DRE #02229612  
emily@dpplc.com  
Cell: 760.636.3500



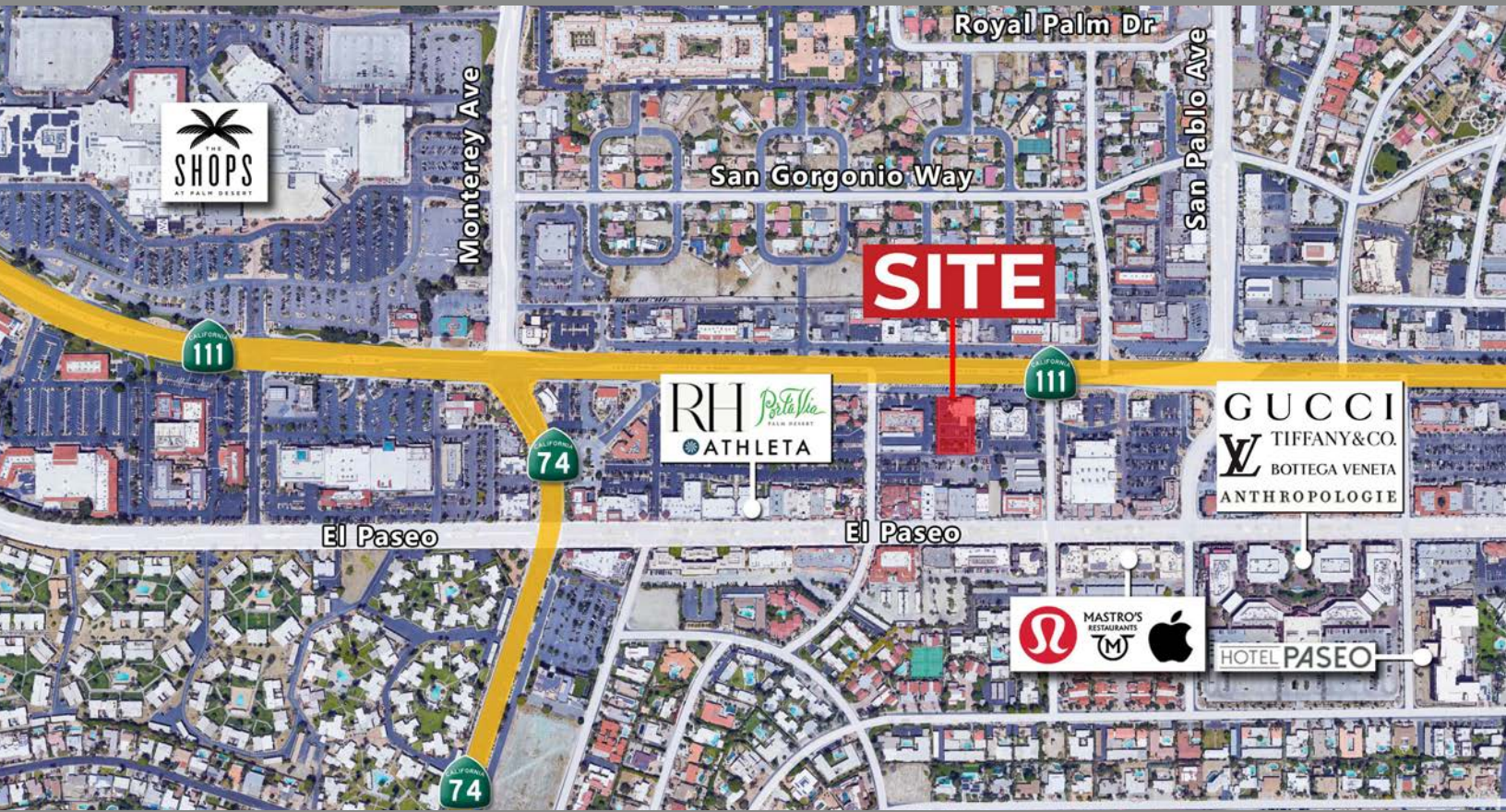
**SUSAN HARVEY**  
DRE #00957590  
susan@dpplc.com  
Cell: 760.250.8992

**DesertPacificProperties.com 760.360.8200**

# 4,595 SF OFFICE SPACE FOR LEASE

## AERIAL & SITE AMENITIES

### 73301 HIGHWAY 111, PALM DESERT



## SITE AMENITIES

- **Location:** 73301 Highway 111, Palm Desert
- **Building Size:** 8,620 SF
- **Previous Use:** Former bank building
- **Parcel Size (According to County Assessor's Information):** 0.74 acres (32,234 SF)
- **APN:** 627-201-022
- **Zoning/General Plan:** [D - Downtown District](#)
- **NNN Charge:** TBD



760.360.8200 | [DesertPacificProperties.com](http://DesertPacificProperties.com) | 44267 Monterey Ave, Ste. A, Palm Desert, CA 92260

Disclaimer: The information provided has been obtained from sources believed reliable. While we do not doubt its accuracy, we have not verified it and make no guarantee, warrant or representation about it. Buyer is strongly encouraged to independently confirm its accuracy and completeness. Any projections, opinions assumptions or estimates used are for example only, and may not accurately represent the current or future performance of the property.