

13.41 Acres • Airport Way Land Industrial Outdoor Storage

7800 NE Killingsworth Street • Portland, Oregon

For Lease



Available Industrial Outdoor Storage

13.41 AC Located at the Gateway to Portland International Airport

The Airport Way submarket offers excellent access to I-205 and I-84 via Columbia Blvd. and Killingsworth.

- Land for Industrial Outdoor Storage (IOS)
- Highly secure location
- Large 13.41 acre lot
- Owner will develop with compacted gravel or pave site
- Located within 2 miles of Portland International Airport and 10 miles of the Port of Portland
- Zoned EG2-H – General Employment - allowing office, manufacturing, industrial distribution, and some retail uses

- Located within the Economic Enterprise Zone
- Economic Incentives available for jobs

LEASE RATE: Call for Rate*

*Owner to improve with compacted gravel or fully paved.

SALE PRICE: Owner will consider a sale at \$9 million.

NEWMARK

For additional information, please contact:


capacity

MARK HUSH, SIOR

Managing Director

503.972.5517

mark.hush@nrmk.com

Licensed Oregon Real Estate Broker

JACK WARD

Associate

503.972.5509

jack.ward@nrmk.com

Licensed Oregon Real Estate Broker

www.nrmk.com

DAN SLEVIN

Senior Vice President

503.542.4012

dan@capacitycommercial.com

Licensed Oregon Real Estate Broker

www.capacitycommercial.com

EDMUND SLEVIN

Associate Broker

503.502.7795

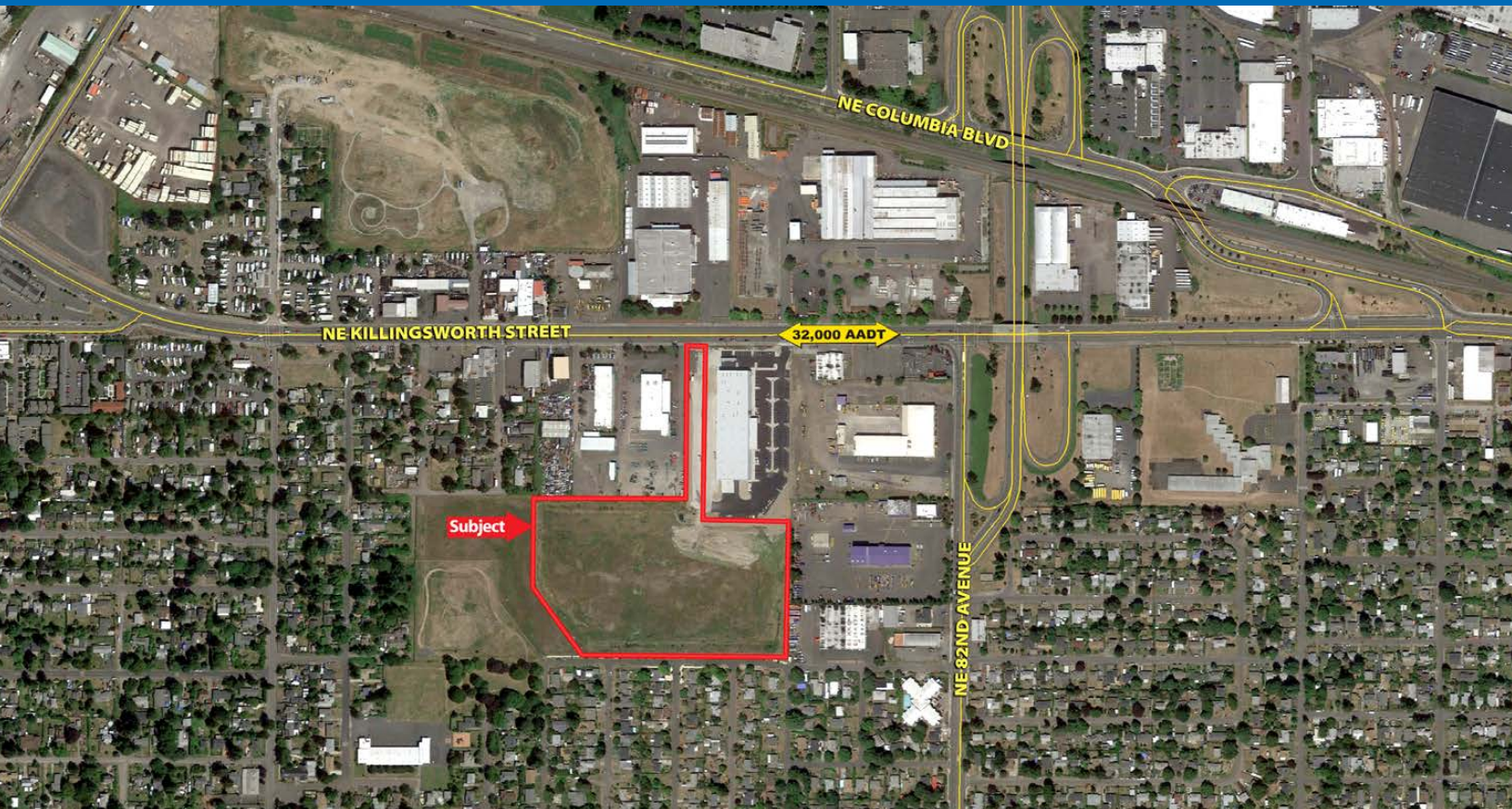
edmund@capacitycommercial.com

Licensed Oregon Real Estate Broker

13.41 Acres • Airport Way Land Industrial Outdoor Storage

7800 NE Killingsworth Street • Portland, Oregon

For Lease



POPULATION			
	1 MILE	3 MILES	5 MILES
2022 Estimate	12,585	106,437	379,880
Growth Projection 2022 - 2027	-0.16%	-0.27%	0.08%
HOUSEHOLD INCOME			
	1 MILE	3 MILES	5 MILES
2022 Average Household Income	\$72,840	\$87,926	\$82,013
Daytime Employment	8,049	71,850	232,849

- ♦ 2.5 miles to Portland International Airport
- ♦ Direct access to Airport Way and I-205
- ♦ 3 miles to I-84
- ♦ 6 miles to I-5
- ♦ 9 miles from downtown Portland
- ♦ Within Airport Way Urban Renewal area

NEWMARK

For additional information, please contact:

MARK HUSH
Managing Director
503.972.5517

mark.hush@nrmk.com
Licensed Oregon Real Estate Broker

JACK WARD
Associate
503.972.5509

jack.ward@nrmk.com
Licensed Oregon Real Estate Broker

DAN SLEVIN
Senior Vice President
503.542.4012

dan@capacitycommercial.com
Licensed Oregon Real Estate Broker

EDMUND SLEVIN
Associate Broker
503.502.7795

edmund@capacitycommercial.com
Licensed Oregon Real Estate Broker