

CVCB



CENTRAL
VALLEY
COMMERCIAL
BROKERS, INC

FOR SALE

1311 State HWY 46, Wasco CA

029-180-19

PRICE IMPROVEMENT! \$750,000



Property Details

- 4,424 building SF
- 15,389 total parcel SF
- 17,000 daily traffic count
- Zoned C-2
- Signalized hard corner next to new retail strip center with national tenants
- HWY 46 is a major thoroughfare to reach central coast to the west
- All utilities are on site



HENRY E. MENDEZ, JR.

CA RE #01127054 CA DRE #02084340 • Broker/ Principal
hmendez@cvcbrokers.com • 661.404.4090 Office
930 Truxtun Ave., Suite 101, Bakersfield, CA 93301

The information contained herein may have been obtained from sources other than CVCB. We have not verified such information and make no guarantees, warranties, or representations about such information. It is your responsibility to independently confirm its accuracy and completeness prior to purchasing/leasing the property.

Property Photo

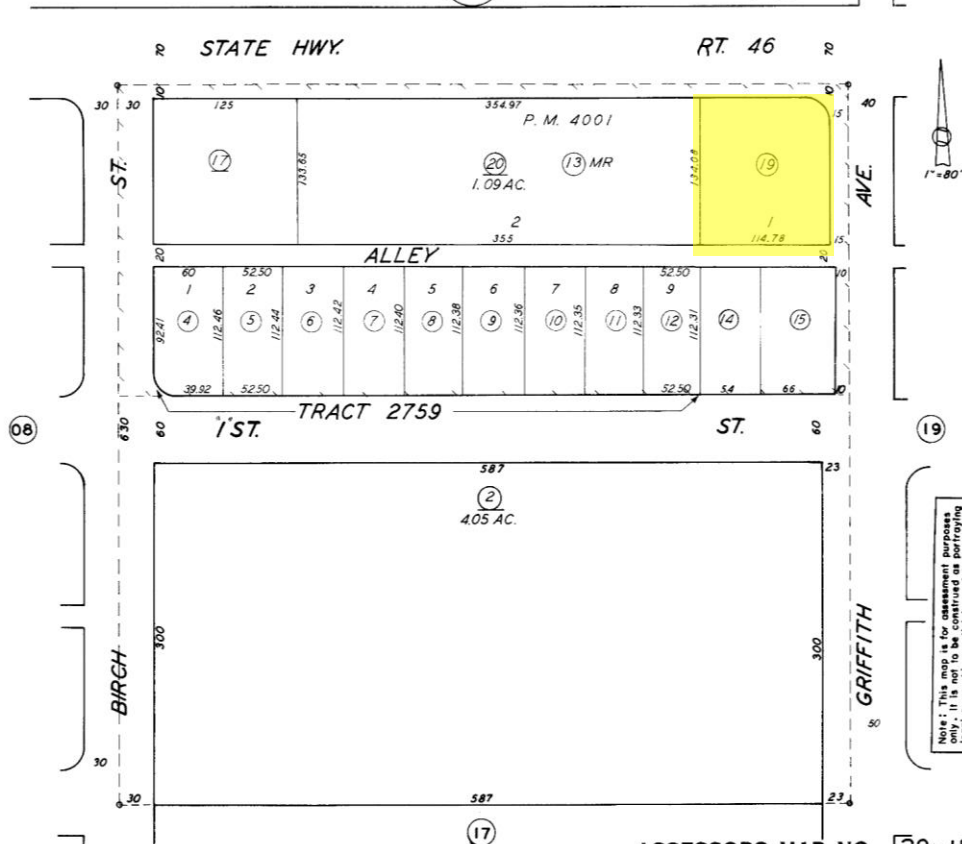


Assessors Map

29-18

LOT 67 OF FOURTH HOME EXTENSION COLONY SCHOOL DIST. 7-1 29-18
7-20 7-18
7-21

BK.487



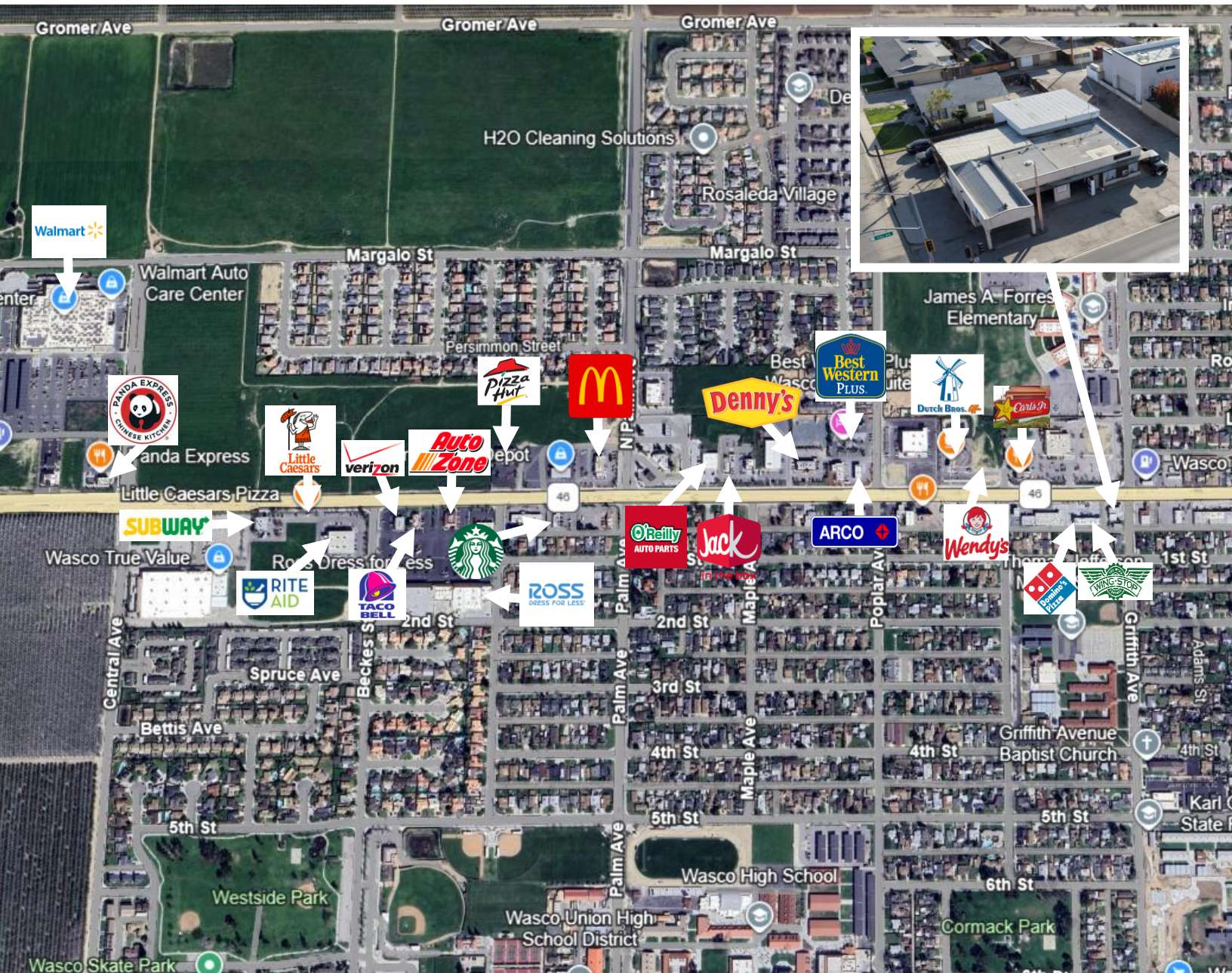
ASSESSORS MAP NO. 29-18
COUNTY OF KERN

This map/plot is being furnished as an aid in locating the herein described Land in relation to adjoining streets, natural boundaries and other land, and is not a survey of the land depicted. Except to the extent a policy of title insurance is expressly modified by endorsement, if any, the Company does not insure dimensions, distances, location of easements, acreage or other matters shown thereon.

FOR SALE

1311 HWY 46, Wasco CA

Aerial Map



HENRY E. MENDEZ, JR.

CA RE #01127054 CA DRE #02084340 • Broker/ Principal

hmendez@cvcbrokers.com • 661.404.4090 Office

930 Truxtun Ave., Suite 101, Bakersfield, CA 93301

The information contained herein may have been obtained from sources other than CVCB. We have not verified such information and make no guarantees, warranties, or representations about such information. It is your responsibility to independently confirm its accuracy and completeness prior to purchasing/leasing the property.