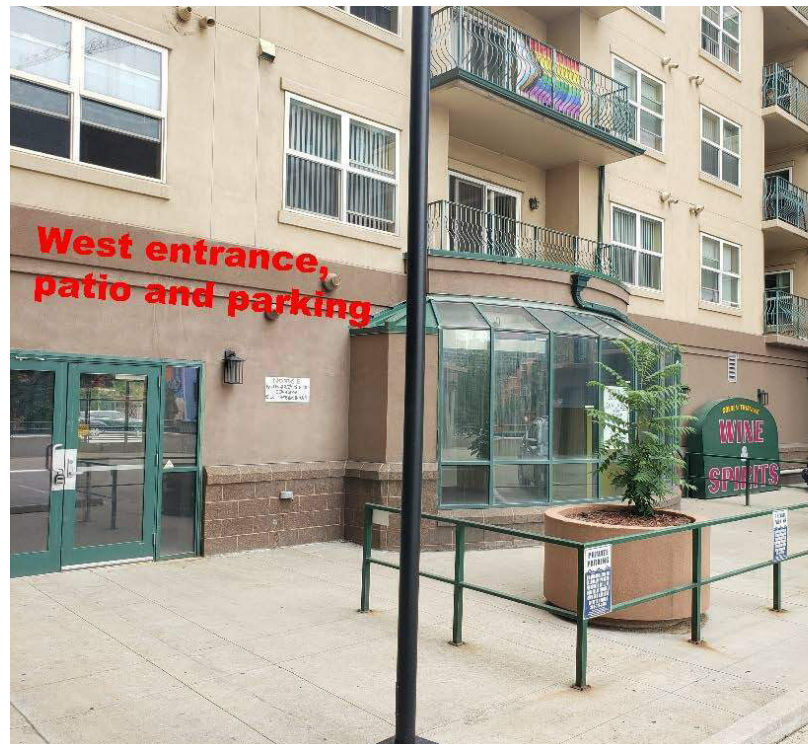


# BROADWAY RETAIL/OFFICE STOREFRONT

1135 Broadway, Denver, CO 80203

FOR LEASE



## PROPERTY DESCRIPTION

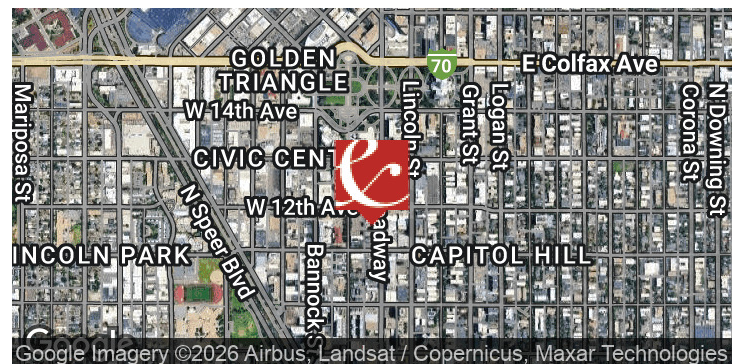
Excellent retail/office location below 96 apartment units on busy Broadway corridor. Zoned Downtown Golden Triangle (D-GT). Former brewery and gym. Perfect for convenience store/food market/fitness/salon/education

## PROPERTY HIGHLIGHTS

- Vanilla shell - bring your imagination
- Two restrooms, potential kitchen prep area
- Parking by west entrance
- Courtyard patio area
- High visibility on Broadway
- Off street parking and storefront metered parking
- Walking distance to State Capital, Civic Center, Restaurants and Office Buildings
- High daytime population and daily traffic counts

## OFFERING SUMMARY

Available SF:	2,850 SF
Lease Rate:	\$25.00 SF/yr (NNN)



### LOUIS LEE

Antonoff & Co. Brokerage, Inc.  
CO #EA000328361  
303.454.5416  
llee@antonoff.com

### CHARLES NUSBAUM

Antonoff & Co. Brokerage, Inc.  
CO #EA040028301  
303.454.5420  
cnusbaum@antonoff.com

**ANTONOFF**  
& CO. BROKERAGE INC.

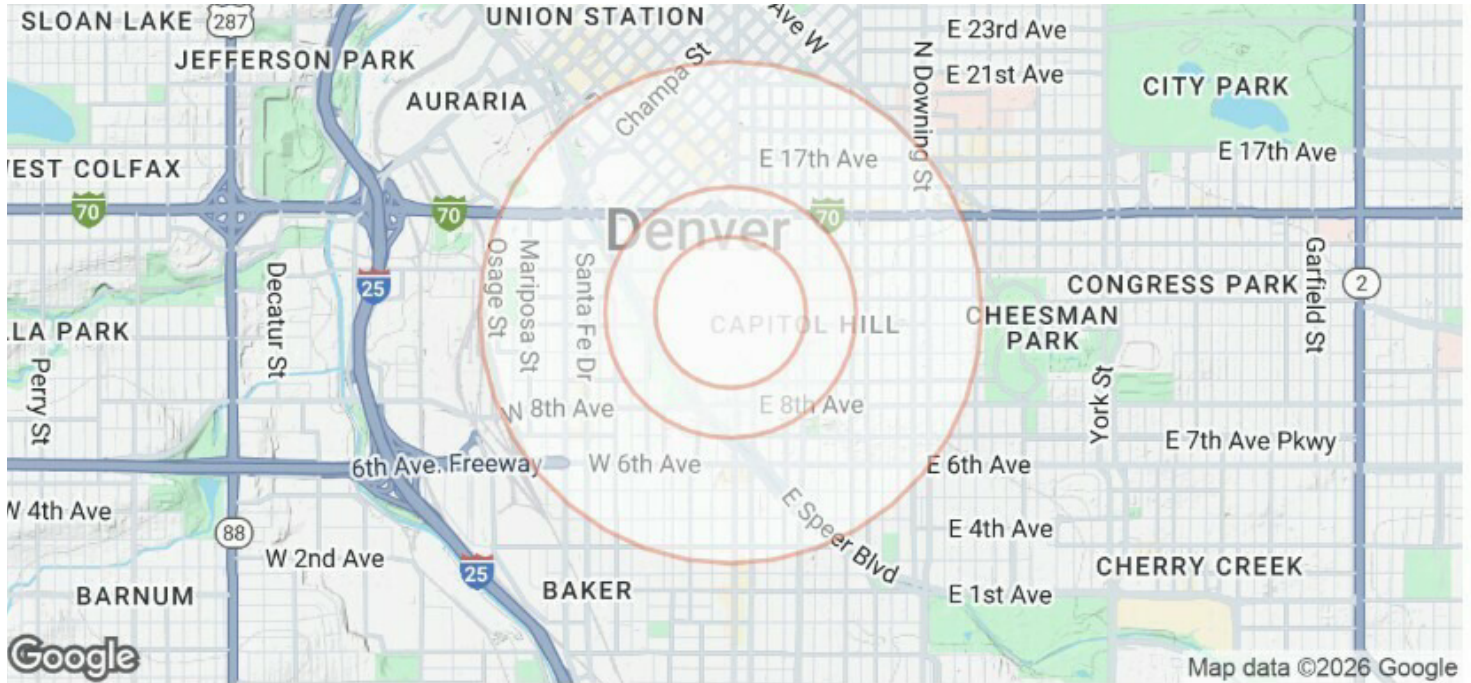
The information above was obtained from sources we deem reliable; however, no warranty or representation, expressed or implied, is made as to the accuracy of the information contained herein. Any reliance on this information is solely at your own risk.



# BROADWAY RETAIL/OFFICE STOREFRONT

1135 Broadway, Denver, CO 80203

FOR LEASE



## DEMOGRAPHICS

	1 MILE	3 MILE	5 MILE
2024 Population	51,404	250,738	516,852
Average Household Income	\$98,309	\$116,003	\$112,259
Businesses	7,877	27,186	43,051
Employees	100,704	261,903	396,529

Demographics & Traffic counts provided by CoStar

## TRAFFIC COUNTS

Lincoln St. N of E 13th Ave.	42,567/vpd
Broadway N of E. 13th Ave.	32,957/vpd
Lincoln St. N of E 12th Ave	23,042/vpd

### LOUIS LEE

Antonoff & Co. Brokerage, Inc.  
CO #EA000328361  
303.454.5416  
llee@antonoff.com

### CHARLES NUSBAUM

Antonoff & Co. Brokerage, Inc.  
CO #EA040028301  
303.454.5420  
cnusbaum@antonoff.com

**ANTONOFF**  
& CO. BROKERAGE INC.

The information above was obtained from sources we deem reliable; however, no warranty or representation, expressed or implied, is made as to the accuracy of the information contained herein. Any reliance on this information is solely at your own risk.



# BROADWAY RETAIL/OFFICE STOREFRONT

1135 Broadway, Denver, CO 80203

FOR LEASE



## LOUIS LEE

Antonoff & Co. Brokerage, Inc.  
CO #EA000328361  
303.454.5416  
llee@antonoff.com

## CHARLES NUSBAUM

Antonoff & Co. Brokerage, Inc.  
CO #EA040028301  
303.454.5420  
cnusbaum@antonoff.com

**ANTONOFF**  
& CO. BROKERAGE INC.

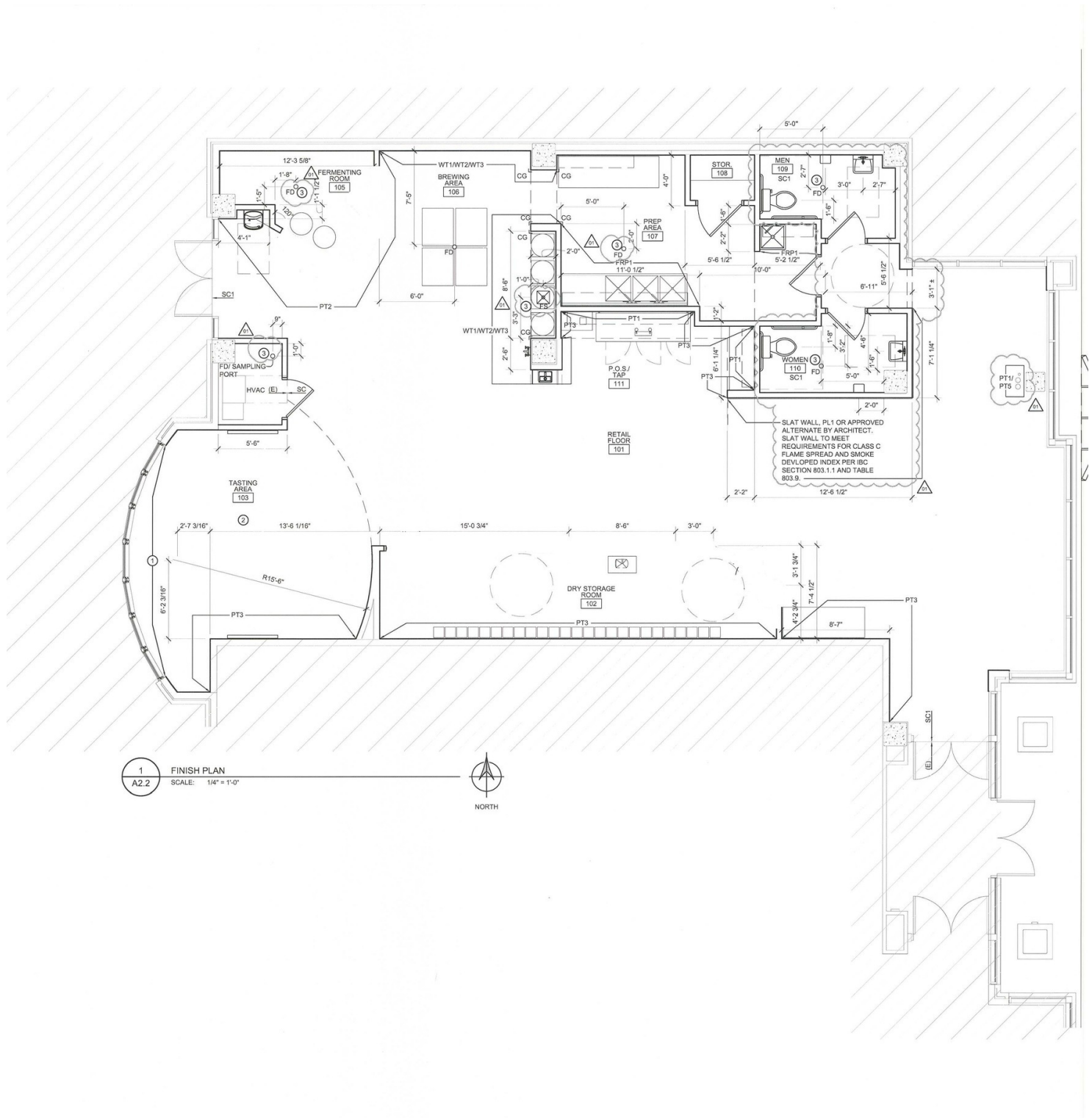
The information above was obtained from sources we deem reliable; however, no warranty or representation, expressed or implied, is made as to the accuracy of the information contained herein. Any reliance on this information is solely at your own risk.



# BROADWAY RETAIL/OFFICE STOREFRONT

1135 Broadway, Denver, CO 80203

FOR LEASE



## LOUIS LEE

Antonoff & Co. Brokerage, Inc.  
CO #EA000328361  
303.454.5416  
llee@antonoff.com

## CHARLES NUSBAUM

Antonoff & Co. Brokerage, Inc.  
CO #EA040028301  
303.454.5420  
cnusbaum@antonoff.com

**ANTONOFF**  
& CO. BROKERAGE INC.

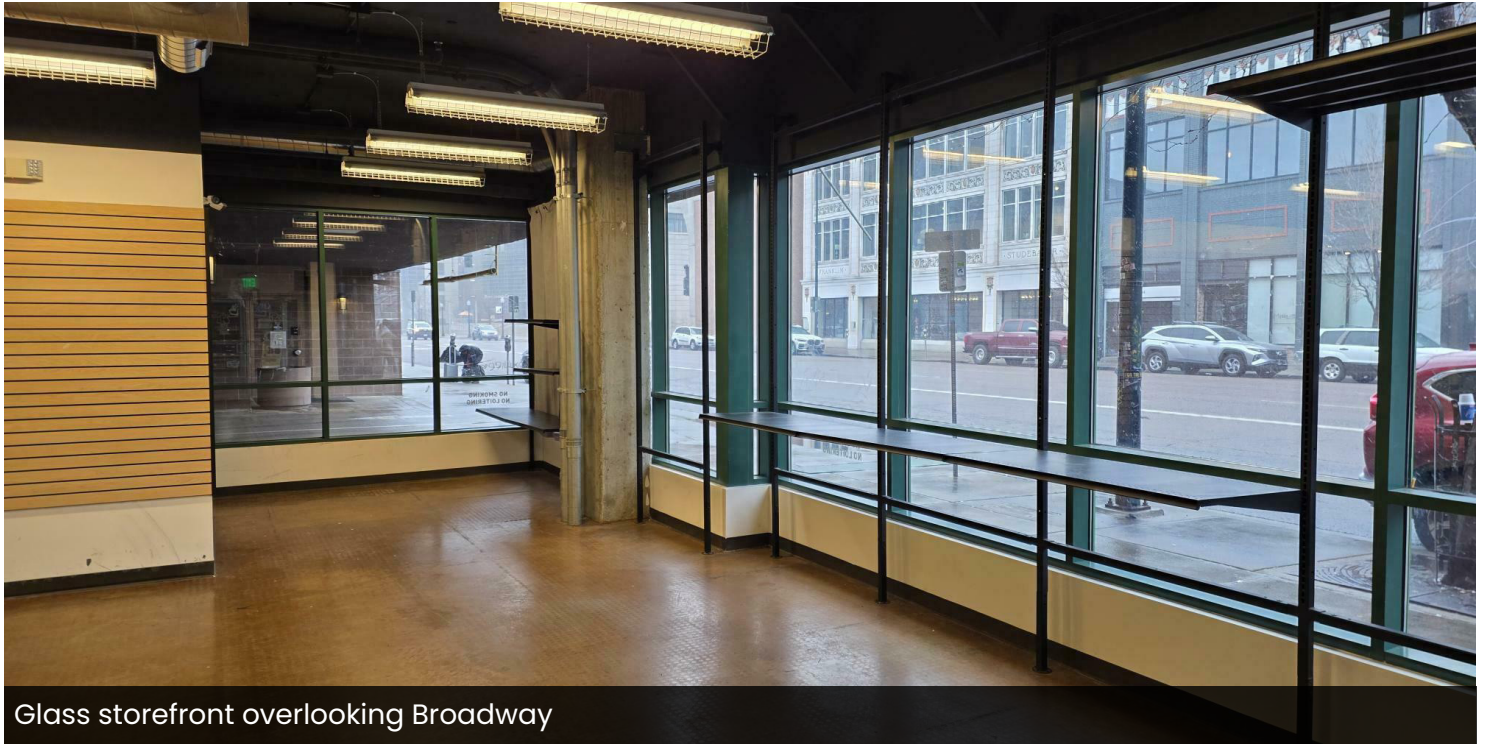
The information above was obtained from sources we deem reliable; however, no warranty or representation, expressed or implied, is made as to the accuracy of the information contained herein. Any reliance on this information is solely at your own risk.



# BROADWAY RETAIL/OFFICE STOREFRONT

1135 Broadway, Denver, CO 80203

FOR LEASE



Glass storefront overlooking Broadway



Wall of glass overlooking Broadway

## LOUIS LEE

Antonoff & Co. Brokerage, Inc.  
CO #EA000328361  
303.454.5416  
llee@antonoff.com

## CHARLES NUSBAUM

Antonoff & Co. Brokerage, Inc.  
CO #EA040028301  
303.454.5420  
cnusbaum@antonoff.com

**ANTONOFF**  
& CO. BROKERAGE INC.

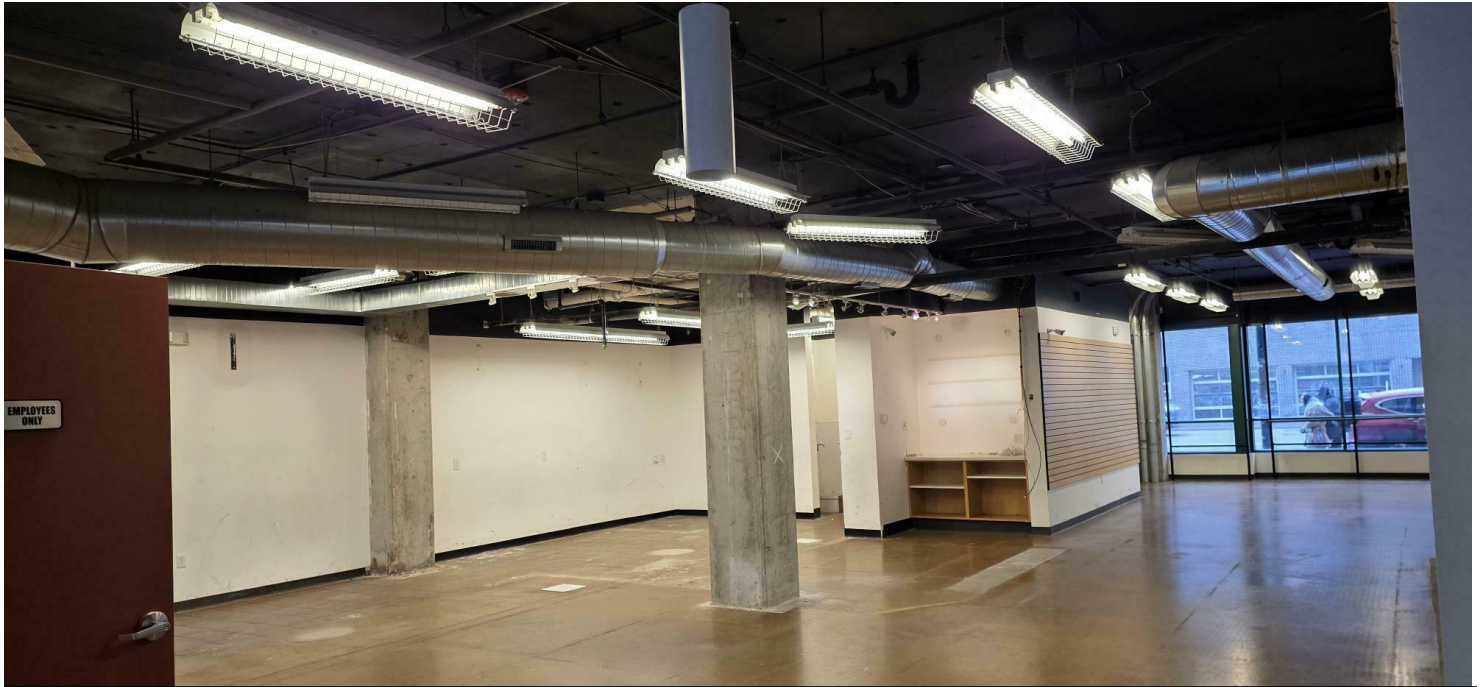
The information above was obtained from sources we deem reliable; however, no warranty or representation, expressed or implied, is made as to the accuracy of the information contained herein. Any reliance on this information is solely at your own risk.



# BROADWAY RETAIL/OFFICE STOREFRONT

1135 Broadway, Denver, CO 80203

FOR LEASE



Space facing Broadway



Entrance at rear



Westward view to patio and parking

## LOUIS LEE

Antonoff & Co. Brokerage, Inc.  
CO #EA000328361  
303.454.5416  
llee@antonoff.com

## CHARLES NUSBAUM

Antonoff & Co. Brokerage, Inc.  
CO #EA040028301  
303.454.5420  
cnusbaum@antonoff.com

**ANTONOFF**  
& CO. BROKERAGE INC.

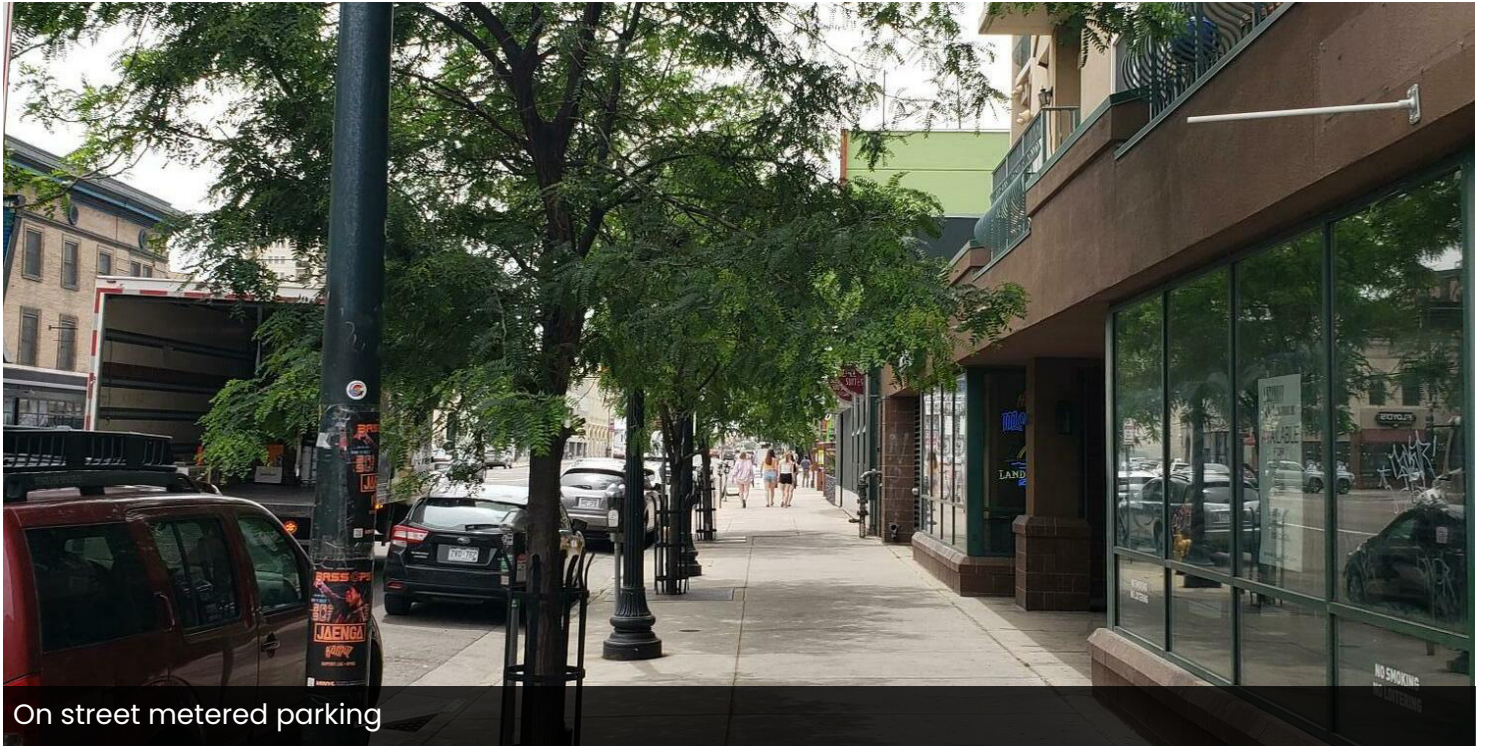
The information above was obtained from sources we deem reliable; however, no warranty or representation, expressed or implied, is made as to the accuracy of the information contained herein. Any reliance on this information is solely at your own risk.



# BROADWAY RETAIL/OFFICE STOREFRONT

1135 Broadway, Denver, CO 80203

FOR LEASE



On street metered parking



Neighbors to the SE



Neighbors to the South

## LOUIS LEE

Antonoff & Co. Brokerage, Inc.  
CO #EA000328361  
303.454.5416  
llee@antonoff.com

## CHARLES NUSBAUM

Antonoff & Co. Brokerage, Inc.  
CO #EA040028301  
303.454.5420  
cnusbaum@antonoff.com

**ANTONOFF**  
& CO. BROKERAGE INC.

The information above was obtained from sources we deem reliable; however, no warranty or representation, expressed or implied, is made as to the accuracy of the information contained herein. Any reliance on this information is solely at your own risk.



# BROADWAY RETAIL/OFFICE STOREFRONT

1135 Broadway, Denver, CO 80203

FOR LEASE



Neighbors to the NW



Neighbors to the NE



Neighbors to the North and Art Hotel

## LOUIS LEE

Antonoff & Co. Brokerage, Inc.  
CO #EA000328361  
303.454.5416  
llee@antonoff.com

## CHARLES NUSBAUM

Antonoff & Co. Brokerage, Inc.  
CO #EA040028301  
303.454.5420  
cnusbaum@antonoff.com

**ANTONOFF**  
& CO. BROKERAGE INC.

The information above was obtained from sources we deem reliable; however, no warranty or representation, expressed or implied, is made as to the accuracy of the information contained herein. Any reliance on this information is solely at your own risk.



**DIFFERENT BROKERAGE RELATIONSHIPS ARE AVAILABLE WHICH INCLUDE LANDLORD AGENCY, TENANT AGENCY OR TRANSACTION-BROKERAGE.**

## **BROKERAGE DISCLOSURE TO TENANT**

### **DEFINITIONS OF WORKING RELATIONSHIPS**

For purposes of this document, landlord includes sublandlord and tenant includes subtenant.

**Landlord's Agent:** A landlord's agent works solely on behalf of the landlord to promote the interests of the landlord with the utmost good faith, loyalty and fidelity. The agent negotiates on behalf of and acts as an advocate for the landlord. The landlord's agent must disclose to potential tenants all adverse material facts actually known by the landlord's agent about the property. A separate written listing agreement is required which sets forth the duties and obligations of the broker and the landlord.

**Tenant's Agent:** A tenant's agent works solely on behalf of the tenant to promote the interests of the tenant with the utmost good faith, loyalty and fidelity. The agent negotiates on behalf of and acts as an advocate for the tenant. The tenant's agent must disclose to potential landlords all adverse material facts actually known by the tenant's agent, including the tenant's financial ability to perform the terms of the transaction and, if a residential property, whether the tenant intends to occupy the property. A separate written tenant agency agreement is required which sets forth the duties and obligations of the broker and the tenant.

**Transaction-Broker:** A transaction-broker assists the tenant or landlord or both throughout a real estate transaction by performing terms of any written or oral agreement, fully informing the parties, presenting all offers and assisting the parties with any contracts, including the closing of the transaction, without being an agent or advocate for any of the parties. A transaction-broker must use reasonable skill and care in the performance of any oral or written agreement, and must make the same disclosures as agents about all adverse material facts actually known by the transaction-broker concerning a property or a tenant's financial ability to perform the terms of a transaction and, if a residential property, whether the tenant intends to occupy the property. No written agreement is required.

**Customer:** A customer is a party to a real estate transaction with whom the broker has no brokerage relationship because such party has not engaged or employed the broker, either as the party's agent or as the party's transaction-broker.

---

---

### **RELATIONSHIP BETWEEN BROKER AND TENANT**

Broker and Tenant referenced below have NOT entered into a tenant agency agreement. The working relationship specified below is for a specific property described as:

1135 Broadway, Denver, CO 80203

or real estate which substantially meets the following requirements:

---

Tenant understands that Tenant is not liable for Broker's acts or omissions that have not been approved, directed, or ratified by Tenant.

#### **CHECK ONE BOX ONLY:**

☒ **Multiple-Person Firm.** Broker, referenced below, is designated by Brokerage Firm to serve as Broker. If more than one individual is so designated, then references in this document to Broker shall include all persons so designated, including substitute or additional brokers. The brokerage relationship exists only with Broker and does not extend to the employing broker, Brokerage Firm or to any other brokers employed or engaged by Brokerage Firm who are not so designated.

☐ **One-Person Firm.** If Broker is a real estate brokerage firm with only one licensed natural person, then any references to Broker or Brokerage Firm mean both the licensed natural person and brokerage firm who shall serve as Broker.



**CHECK ONE BOX ONLY:**

- ☒ **Customer.** Broker is the ☒ landlord's agent ☐ landlord's transaction-broker and Tenant is a customer. Broker intends to perform the following list of tasks: ☒ Show the premises ☒ Prepare and Convey written offers, counteroffers and agreements to amend or extend the contract. Broker is not the agent or transaction-broker of Tenant.
- ☐ **Customer for Broker's Listings – Transaction-Brokerage for Other Properties.** When Broker is the landlord's agent or landlord's transaction-broker, Tenant is a customer. When Broker is not the landlord's agent or landlord's transaction-broker, Broker is a transaction-broker assisting Tenant in the transaction. Broker is not the agent of Tenant.
- ☐ **Transaction-Brokerage Only.** Broker is a transaction-broker assisting the Tenant in the transaction. Broker is not the agent of Tenant.

If Broker is acting as a transaction-broker, Tenant consents to Broker's disclosure of Tenant's confidential information to the supervising broker or designee for the purpose of proper supervision, provided such supervising broker or designee shall not further disclose such information without consent of Tenant, or use such information to the detriment of Tenant.

**THIS IS NOT A CONTRACT.**

If this is a residential transaction, the following provision applies:

**MEGAN'S LAW.** If the presence of a registered sex offender is a matter of concern to Tenant, Tenant understands that Tenant must contact local law enforcement officials regarding obtaining such information.

**TENANT ACKNOWLEDGMENT:**

Tenant acknowledges receipt of this document on \_\_\_\_\_.

\_\_\_\_\_  
Tenant

\_\_\_\_\_  
Tenant

\_\_\_\_\_  
Tenant

\_\_\_\_\_  
Tenant

**BROKER ACKNOWLEDGMENT:**

On \_\_\_\_\_, Broker provided \_\_\_\_\_ (Tenant) with this document via \_\_\_\_\_ and retained a copy for Broker's records.

Brokerage Firm's Name: Antonoff & Co. Brokerage Inc.

Louis Lee 01/12/2026  
Broker Antonoff & Co. Brokerage, Inc.  
By Louis Lee