

AVAILABLE

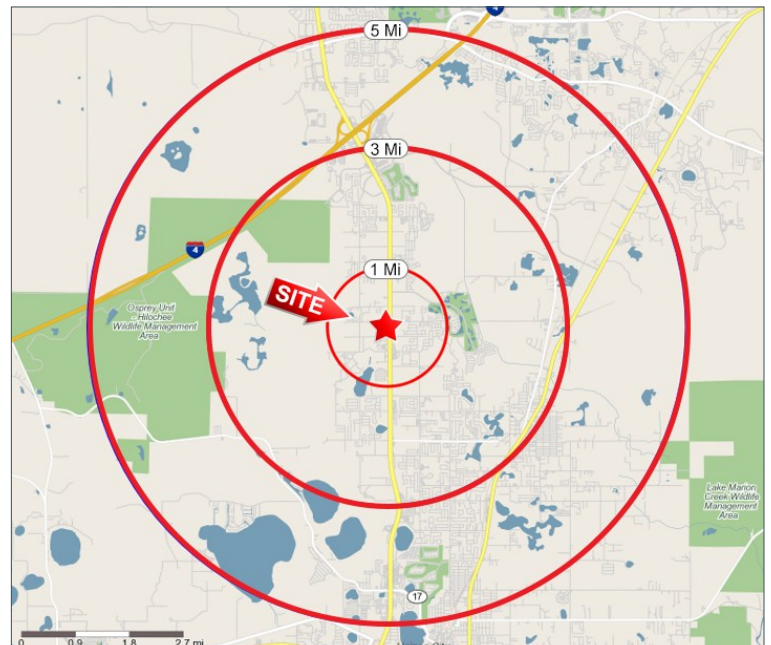
US Hwy 27 & Holly Hill Tank Rd | Davenport | FL 33837



PROPERTY HIGHLIGHTS

- 1.62± acres.
- Hard corner.
- Highly trafficked area, 75,334 ADDT.
- US Hwy 27 frontage.
- Huge residential and commercial growth area.
- Cross access with retail center.
- Proposed signal at the intersection.

Demographics	1-Mile	3-Mile	5-Mile
Population	6,345	31,043	66,222
Growth 2024-2029	19.5%	16.8%	14.7%
Average HH Income	\$84,177	\$84,339	\$82,874
Median Age	38.0	42.0	39.0



Gradon Willard

321-287-1322

Gradon@blurockcommercial.com

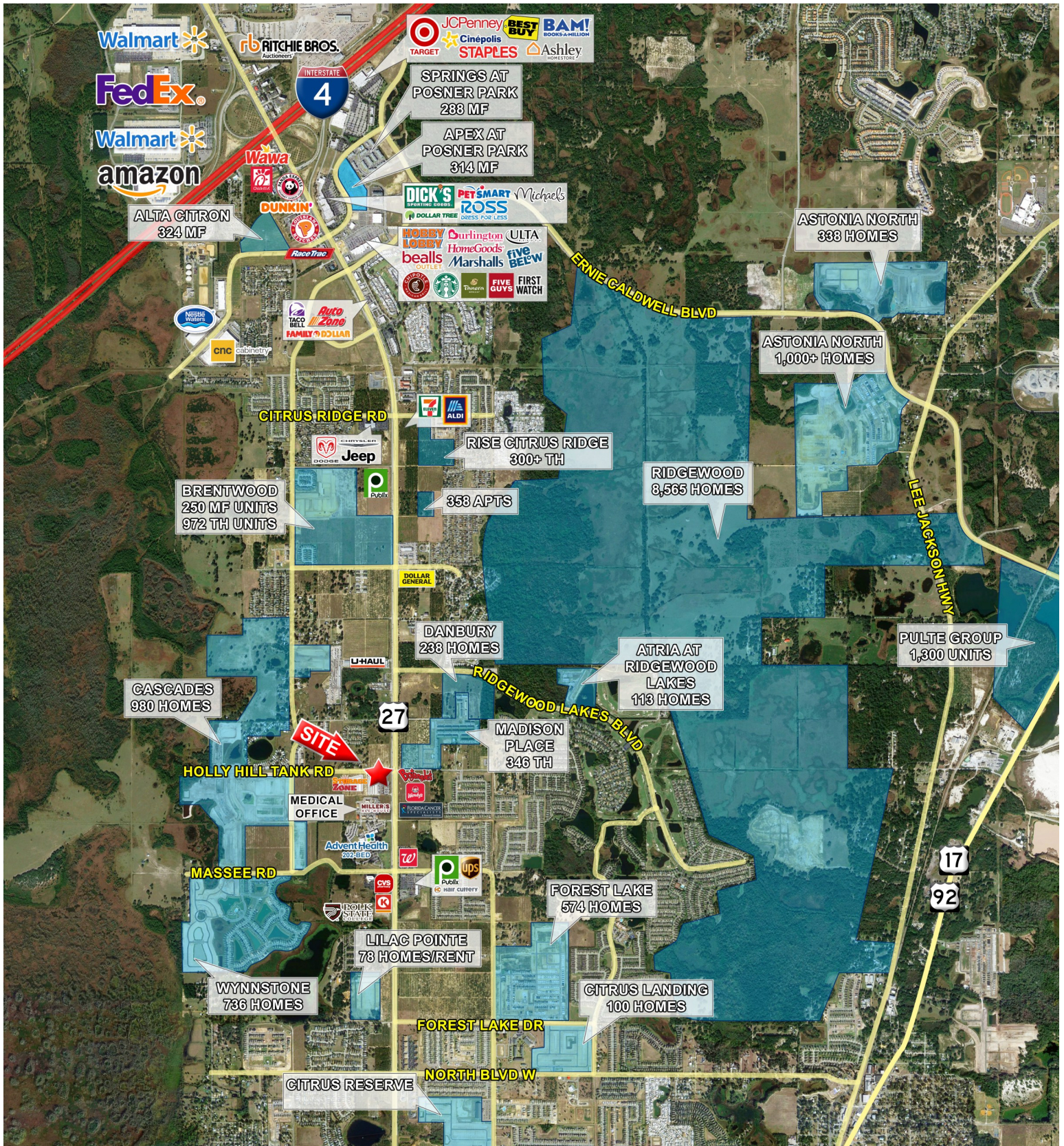
3408 S. Orange Ave.
Suite B

Orlando, FL 32806

www.blurockcommercial.com

AVAILABLE

US Hwy 27 & Holly Hill Tank Rd | Davenport | FL 33837



Gradon Willard

321-287-1322

Gradon@blurockcommercial.com

3408 S. Orange Ave.

Suite B

Orlando, FL 32806

www.blurockcommercial.com

AVAILABLE

US Hwy 27 & Holly Hill Tank Rd | Davenport | FL 33837



Gradon Willard

321-287-1322

Gradon@blurockcommercial.com

3408 S. Orange Ave.

Suite B

Orlando, FL 32806

www.blurockcommercial.com

AVAILABLE

US Hwy 27 & Holly Hill Tank Rd | Davenport | FL 33837



Gradon Willard

321-287-1322

Gradon@blurockcommercial.com

3408 S. Orange Ave.

Suite B

Orlando, FL 32806

www.blurockcommercial.com