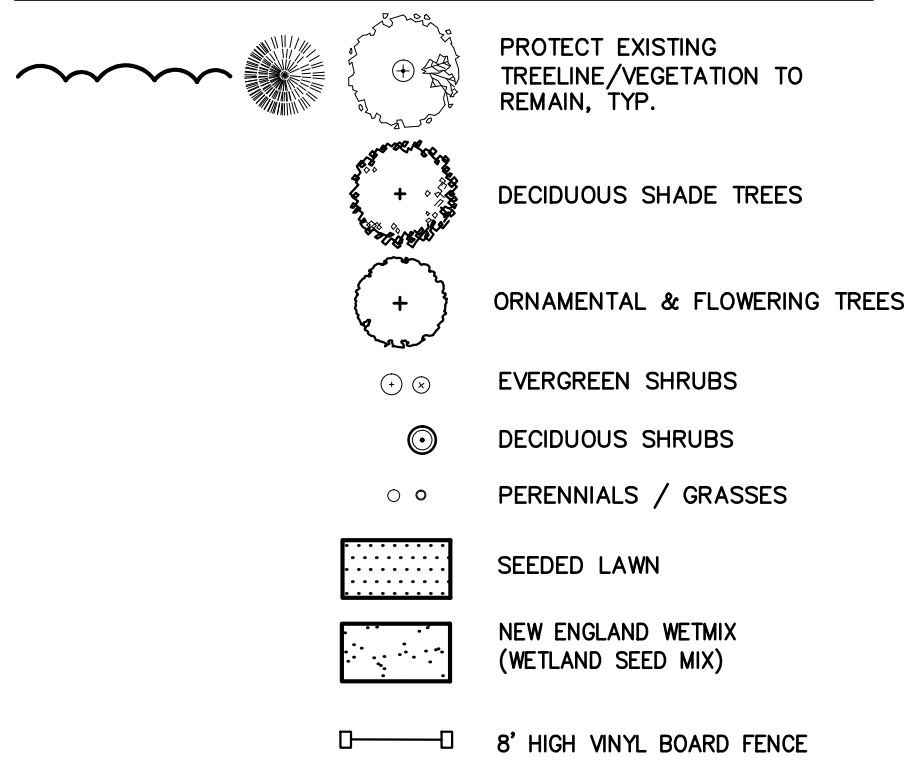


LOCUS MAP OF #677-681 FARM ROAD

SCALE: 1"=200'

GRAPHIC LEGEND



SYM.	QTY.	BOTANICAL NAME	COMMON NAME	SIZE	ROOT	REMARKS
DECIDUOUS AND ORNAMENTAL TREES						
AR	3	ACER RUBRUM	RED MAPLE	2 - 2 1/2"	B&B	6' HIGH BRANCHING
PSC	1	PRUNUS SARGENTII 'COLUMNARIS'	COLUMNAR SARGENT CHERRY	2 - 2 1/2"	B&B	6' HIGH BRANCHING
SHRUBS						
IGC	23	ILEX GLABRA 'COMPACTA'	COMPACT INKBERRY	2 1/2-3"	B&B	
JB	7	JUNIPERUS HORIZONTALIS 'BAR HARBOR'	BAR HARBOR JUNIPER	24" MIN.	CAN	24" SPREAD MIN.
PERENNIALS						
HH	24	HEMEROCALLIS 'HAPPY RETURNS'	HAPPY RETURNS DAYLILY'S	2 GAL.	CAN	YELLOW FLOWER

GENERAL NOTES:

- CONTRACTOR SHALL MAKE A SITE VISIT PRIOR TO BIDDING TO EXAMINE EXISTING CONDITIONS FOR THEMSELVES. CONTRACTOR TO FAMILIARIZE THEMSELVES W/ DESIGN DOCUMENTS NOTES & DETAILS AND THE MASSACHUSETTS DEPARTMENT OF PUBLIC WORKS STANDARD SPECIFICATIONS FOR HIGHWAYS AND BRIDGES, CURRENT EDITION.
- CONTRACTOR SHALL NOTIFY / COORDINATE WITH THE CITY OF MARLBOROUGH. PRIOR TO PLANT MATERIAL INSTALLATION.
- CONTRACTOR SHALL COORDINATE WITH THE CITY OF MARLBOROUGH.
- PRIOR TO THE PRE-CONSTRUCTION MEETING THE CONTRACTOR SHALL CONTACT DIG SAFE @ 1-888-344-7233 TO HAVE THE EXISTING UTILITIES MARKED.
- ALL CONTRACTORS SHALL INSPECT SITE PRIOR TO BIDDING TO VERIFY EXISTING CONDITIONS FOR THEMSELVES.
- THE CONTRACTOR SHALL SUPPLY ALL PLANT MATERIAL IN QUANTITIES SUFFICIENT TO COMPLETE THE PLANTING SHOWN ON THE DRAWINGS. SEE SPECIFICATION.
- ALL PLANT MATERIAL SHALL CONFORM TO THE MINIMUM GUIDELINES ESTABLISHED BY "THE AMERICAN STANDARD FOR NURSERY STOCK", PUBLISHED BY AMERICANHORT 2014, AND AS AMENDED.
- ALL PLANTS TO BE BALLED IN BURLAP OR CONTAINER GROWN. NO PLASTIC BURLAP.
- ALL PLANTS TO BE APPROVED BY THE LANDSCAPE ARCHITECT.
- STAKE LOCATION OF ALL PROPOSED PLANT MATERIAL FOR APPROVAL OF LANDSCAPE ARCHITECT PRIOR TO COMMENCEMENT OF PLANTING.
- THE LANDSCAPE CONTRACTOR SHALL GUARANTEE ALL PLANT MATERIALS FOR ONE (1) FULL YEAR FROM DATE OF ACCEPTANCE.
- HEAL ALL CONSTRUCTION SCARS WITH NATURALIZED GRASS, LAWN OR MULCH AS INDICATED BY DRAWINGS AND/ OR AS DIRECTED BY LANDSCAPE ARCHITECT.
- "DRY ROOTS" SHALL BE ADDED TO ALL NEW TREE PLANTING PITS. ALL NEW LOAM SHALL BE TESTED AND AMENDED AS STATED IN THE LOAM REPORT. PROVIDED BY LOAM SUPPLIER.
- LANDSCAPE CONTRACTOR SHALL SUBMIT A WATERING SCHEDULE PROGRAM FOR THE (60) DAY MAINTENANCE PERIOD FOR REVIEW BY THE LANDSCAPE ARCHITECT & THE OWNER FOR ALL PROPOSED PLANT MATERIAL.
- PROTECT EXISTING PLANT MATERIAL WITHIN CONSTRUCTION LIMITS. PROVIDE WATERING PROGRAM FOR ALL PROPOSED / EXISTING PLANT MATERIAL DURING CONSTRUCTION.
- ALL TRANSPANTED PLANT MATERIAL IS OWNED BY THE CONTRACTOR AND SHALL BE PREPARED FOR TRANSPLANTING FOR EACH SPECIES AT THE APPROPRIATE SEASON. THE CONTRACTOR SHALL REPLACE ANY TRANSPANTED PLANT MATERIAL THAT DIES WITH THE SAME SIZE AND SPECIES OF PLANT MATERIAL. THE NEW PLANT MATERIAL SHALL BE MAINTAINED & GUARANTEED AS NEW PLANT MATERIAL.

LANDSCAPE NOTES:

LOAM DEPTHS SHALL BE AS FOLLOWS:

- LAWN AREAS - 6" ROLLED THICKNESS LAWN GRASS (VALLEY GREEN SEED, LTD. WILMINGTON, MA.) LANDSCAPE/UTILITY MIXTURE FOR SUN/SHADE: ENCHANTED PERENNIAL RYEGRASS CREEPING RED FESCUE GOLDRUSH KENTUCKY BLUEGRASS
- PLANT BEDS - 1-0" LOAM DEPTH IN THE PLANTED AREA WITH 2" MULCH.
- ISOLATED PLANTED ISLANDS - 1-0" LOAM DEPTH
- NEW ENGLAND WETMIX (WETLAND SEED MIX) 4" ROLLED THICKNESS, MIN.

New England Wetmix (Wetland Seed Mix)

Botanical Name	Common Name	Indicator
<i>Carex vulpinoidea</i>	Fox Sedge	OBL
<i>Carex scoparia</i>	Blunt Broom Sedge	FACW
<i>Carex lasiocarpa</i>	Lurid Sedge	OBL
<i>Carex lupulina</i>	Hoop Sedge	OBL
<i>Poa palustris</i>	Fowl Bluegrass	FACW
<i>Bidens frondosa</i>	Beggar Ticks	FACW
<i>Scirpus atrovirens</i>	Green Bulrush	OBL
<i>Asclepias incarnata</i>	Swamp Milkweed	OBL
<i>Carex crinita</i>	Fringed Sedge	OBL
<i>Vernonia noveboracensis</i>	New York Ironweed	FACW+
<i>Juncus effusus</i>	Soft Rush	FACW+
<i>Aster lateriflorus (Symphyotrichum lateriflorum)</i>	Starved/Calico Aster	FACW
<i>Iris verticillata</i>	Blue Flag	OBL
<i>Cyperus grandis</i>	American Mannagrass	OBL
<i>Mimulus ringens</i>	Square Stemmed Monkey Flower	OBL
<i>Eupatorium maculatum (Eutrochium maculatum)</i>	Spotted Joe Pye Weed	OBL

PREPARED FOR:
CAPITAL GROUP PROPERTIES
259 TURNPIKE ROAD, SUITE 100
SOUTHBOROUGH, MA

OWNER:
MARLBOROUGH INDUSTRIAL, LLC
259 TURNPIKE ROAD, SUITE 100
SOUTHBOROUGH, MA

MAP 73, PARCEL 52 & MAP 85, PARCELS 14&15
CONNORSTONE
ENGINEERING INC.
CIVIL ENGINEERS AND LAND SURVEYORS
10 SOUTHWEST CUTOFF, SUITE 7
NORTHBOROUGH, MASSACHUSETTS 01532
PHONE: 508-393-9727 FAX: 508-393-5242

WILLIAM FLEMING ASSOCIATES
LANDSCAPE ARCHITECTURE
PLANNING

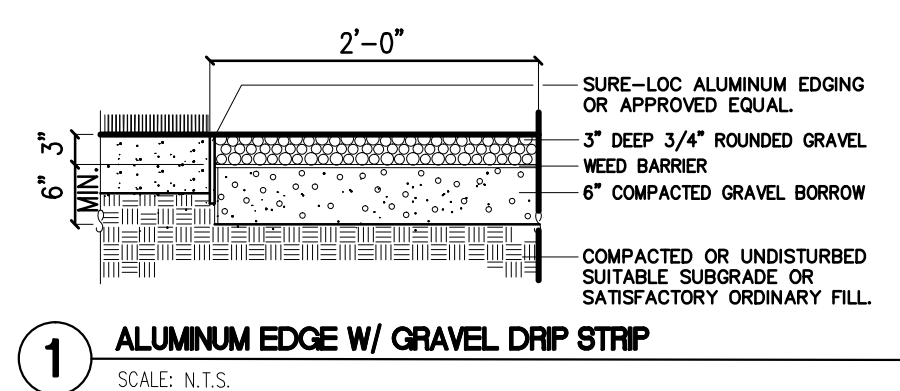
375 MAIN ST.
SUITE 601
STURBRIDGE, MA 02180
T 781 438 3088
F 781 438 3611
E wfl@williamfleming.com



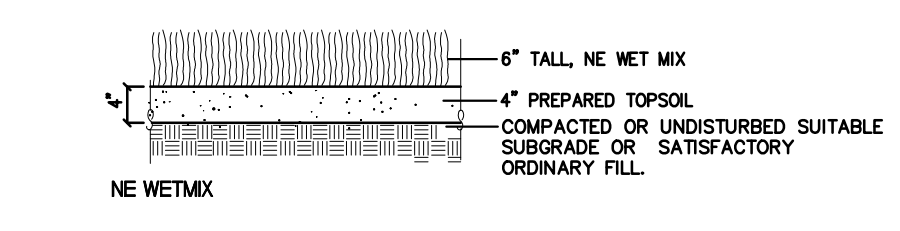
APPROVED
SITE PLAN REVIEW COMMITTEE

PROPOSED LANDSCAPE PLAN
OF
USE AREA #7
AIRPORT BOULEVARD
IN
MARLBOROUGH, MA

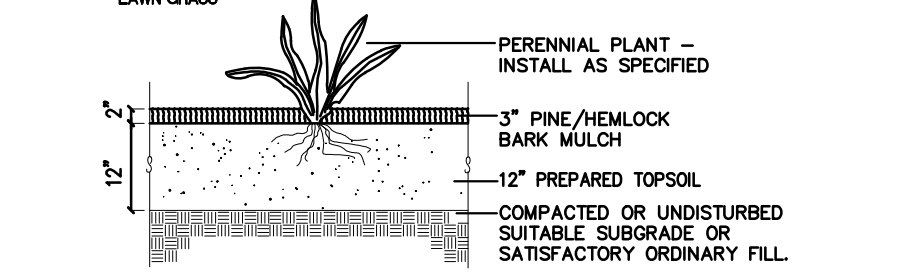
REVISED: DESCRIPTION:
DRAWN BY: WFF CHECK BY: JT
DATE: AUGUST 10, 2021
SCALE: 1"=20' SHEET 1 OF 1



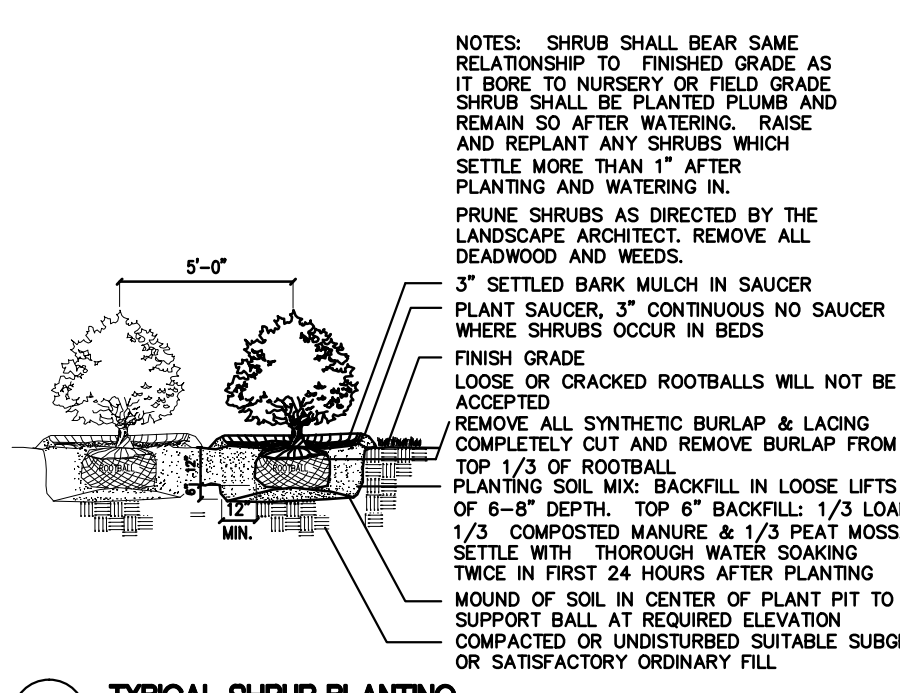
1 ALUMINUM EDGE W/ GRAVEL DRIP STRIP
SCALE: N.T.S.



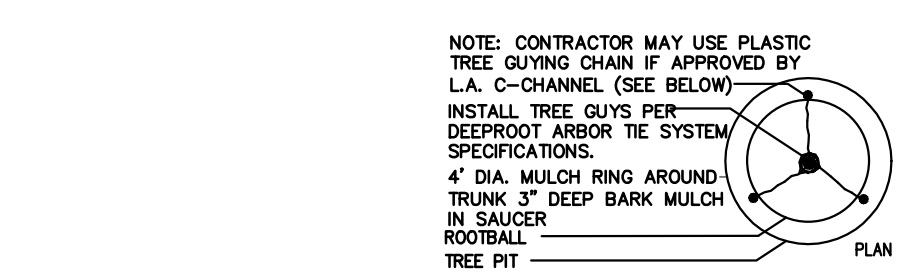
2 NE WETMIX
SCALE: N.T.S.



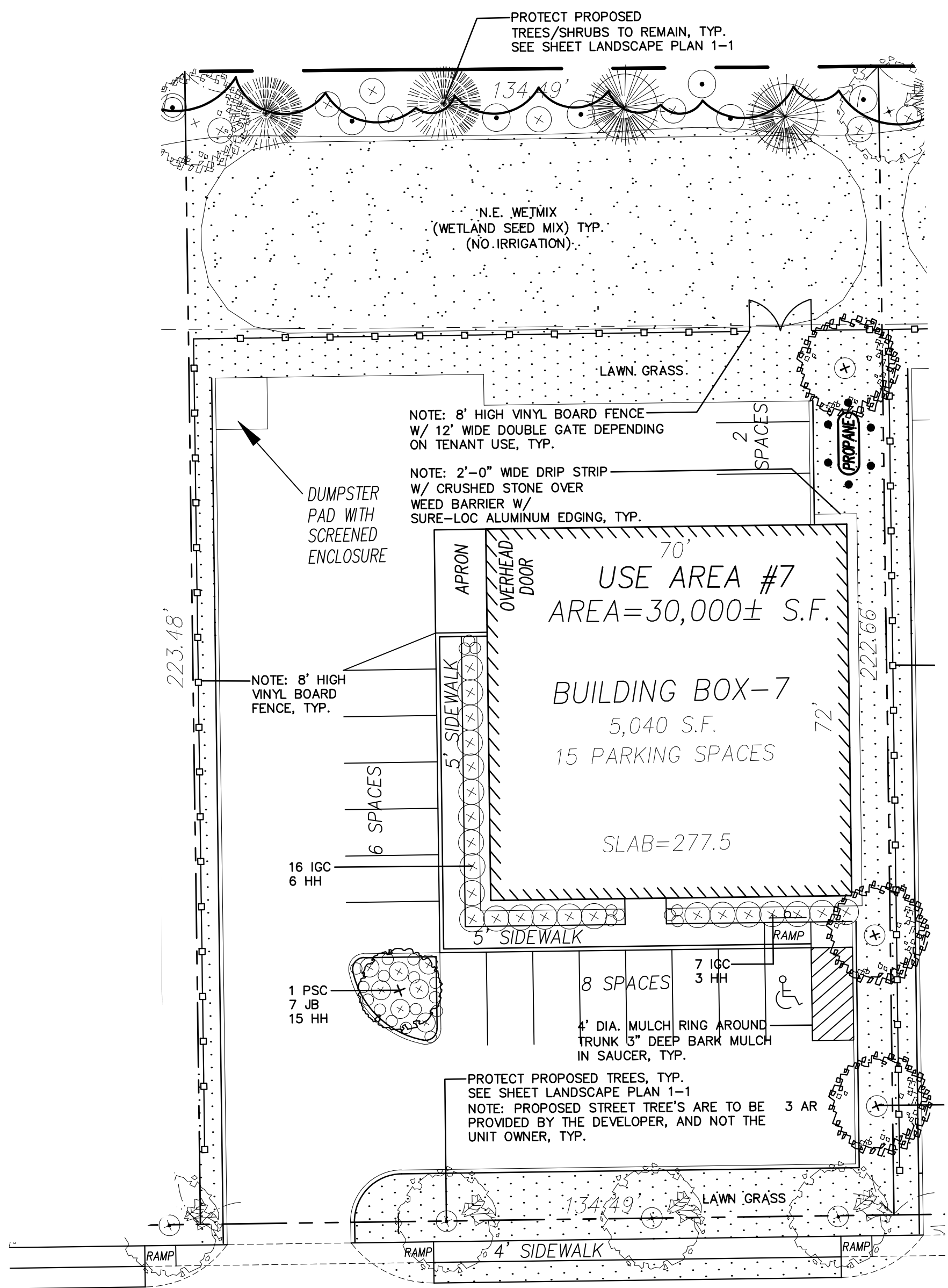
3 PERENNIAL + LAWN GRASS + NE WETMIX
SCALE: N.T.S.



4 TYPICAL SHRUB PLANTING
SCALE: N.T.S.



5 DECIDUOUS TREE PLANTING AND STAKING
SCALE: N.T.S.



AIRPORT BOULEVARD

