

851 Napa Valley Corporate Way, Napa

Suite G ~ ±6,721 SF ~ \$1.25/SF/Mo. NNN



±5,706 SF of Office - ±1,000 SF Warehouse With Roll-Up Door. Warehouse Can Be Expanded.

- 5 Large Private Offices
- 20 Cubicles
- Natural Light from 2 Exterior Walls
- 3 Restrooms (One in Warehouse)
- Open Conference Room
- 5 Additional Private Offices ± 100 SF Each
- Locked Storage Room & Server Room
- Wine Staging Area - Can Be Redirected
- Private Conference Room Holds 10 or More

**Procuring Broker
Fee 5%***

A lease of five years or more will be granted a concession of three months free Base Rent if the lease is signed in the end of 2025.

NOTE: Other office suites available in complex from ±2,142 SF - ±23,121 SF. Divisions will affect the price, but will be reasonably negotiated.

Virtual Tour: <https://www.youtube.com/watch?v=LPh30-BTnMQ>

**For up to 5 Years, then 1.5% for any extended term.*

Michael Moffett

License #00946472

707.479.1976

mmoffett@cnapavalley.com

1775 Lincoln Ave.

Napa, CA 94558

Cathy Holmes

License #01355085

707.304.3338

cholmes@cnapavalley.com

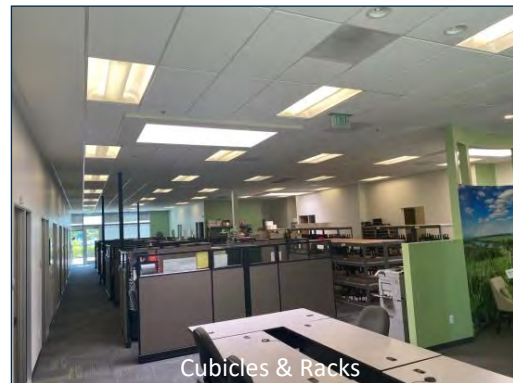


851 Napa Valley Corporate Way, Napa Suite G ~ ±6,721 SF ~ \$1.25/SF/Mo. NNN

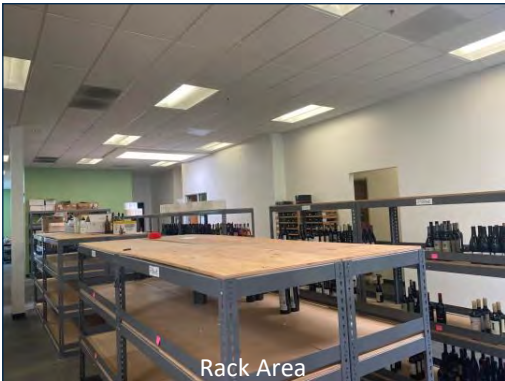
PHOTOS



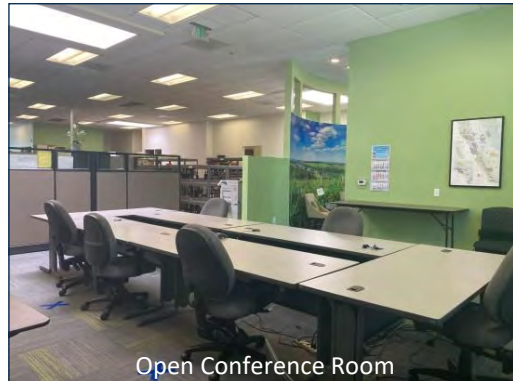
Entrance & Lobby



Cubicles & Racks



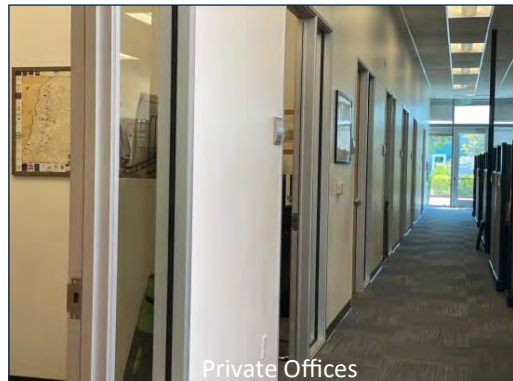
Rack Area



Open Conference Room



Private Conference Room



Private Offices

851 Napa Valley Corporate Way, Napa

Suite G ~ ±6,721 SF ~ \$1.25/SF/Mo. NNN

PHOTOS



Michael Moffett

License #00946472

707.479.1976

mmoffett@cbnapavalley.com

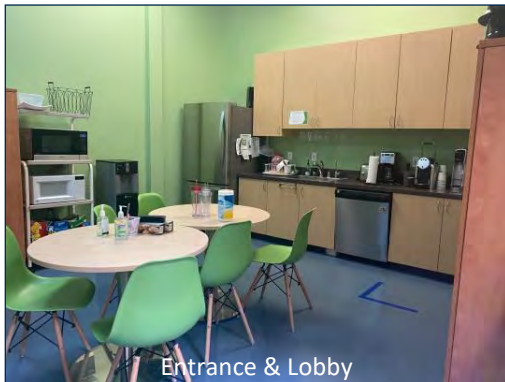
1775 Lincoln Ave.
Napa, CA 94558

Cathy Holmes

License #01355085

707.304.3338

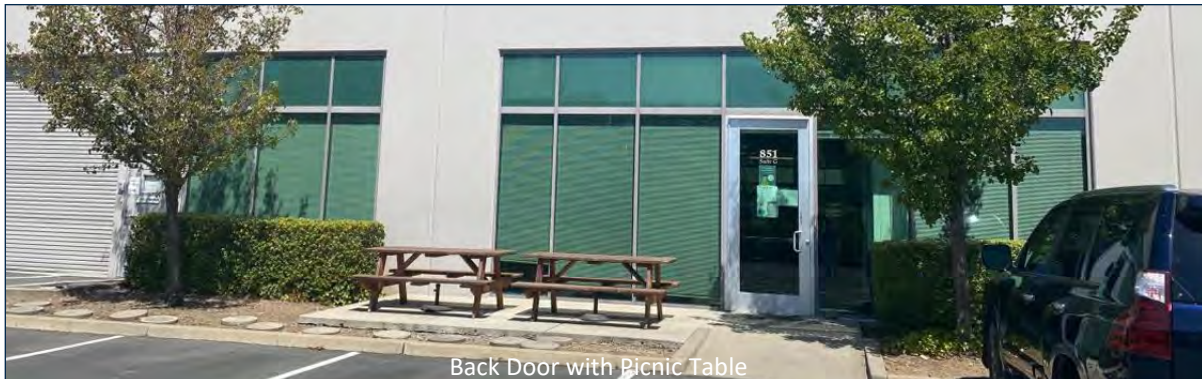
cholmes@cbnapavalley.com



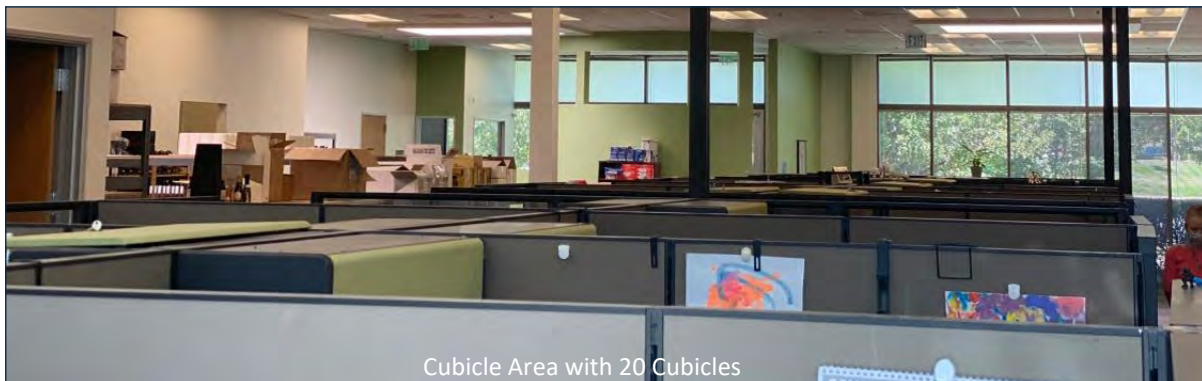
Entrance & Lobby



Cubicles & Racks



Back Door with Picnic Table



Cubicle Area with 20 Cubicles



851 Napa Valley Corporate Way, Napa

Suite G ~ ±6,721 SF ~ \$1.25/SF/Mo. NNN

PHOTOS



Michael Moffett

License #00946472

707.479.1976

mmoffett@cbnapavalley.com

1775 Lincoln Ave.
Napa, CA 94558

Cathy Holmes

License #01355085

707.304.3338

cholmes@cbnapavalley.com

