

# FOR LEASE



## TUALATIN-SHERWOOD BUSINESS PARK

14841, 14889, 14937, 14991, 14997 SW TUALATIN-SHERWOOD ROAD | SHERWOOD, OR 97104

### Each Suite Includes:

- » 1 Grade Door, 16'-18' Clear Height
- » Insulated Side Walls and Ceiling
- » Limited Garbage Service Included in NNNs

### Nearby Amenities Include:

- » Target, Walmart, Several Banks and Numerous Restaurants

BLDG.	SUITE	TOTAL SF	AVAILABILITIES			BASE RENT	NNNs	TOTAL MONTHLY RENT
			OFFICE SF	MEZZ. SF				
1	106	1760	286	286	\$1,850	\$550	\$2,300	

### CONTACT US

**SCOTT MILLER**

*Senior Associate Broker*

P. 503.517.9872

E. [scottm@capacitycommercial.com](mailto:scottm@capacitycommercial.com)

**CAPACITY COMMERCIAL GROUP**

805 SW Broadway, Suite 700 | Portland, OR 97205

P. 503.326.9000

E. [info@capacitycommercial.com](mailto:info@capacitycommercial.com)

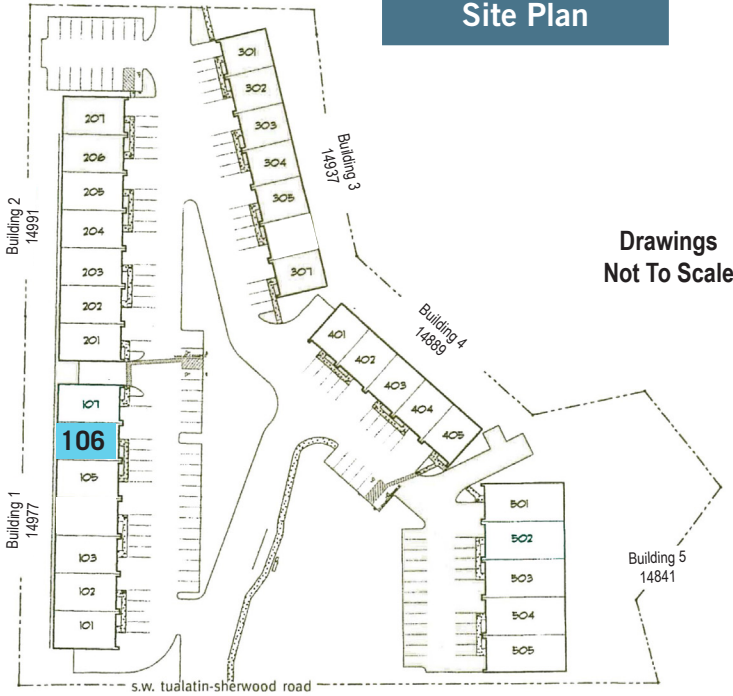
[www.capacitycommercial.com](http://www.capacitycommercial.com)

Proud member of:

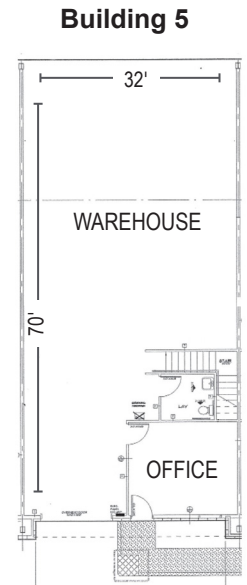
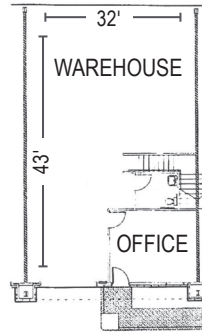
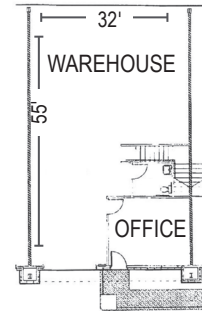
**CORFAC**  
International

The information contained herein is believed to be accurate but is not warranted as to its accuracy and may change or be updated without notice. Seller or Landlord makes no representation as to the environmental condition of the property and recommends purchaser's or tenant's independent investigation.

## Site Plan



## Floor Plans



## CONTACT US

**SCOTT MILLER**

*Senior Associate Broker*

P. 503.517.9872

E. [scottm@capacitycommercial.com](mailto:scottm@capacitycommercial.com)

**CAPACITY COMMERCIAL GROUP**

805 SW Broadway, Suite 700 | Portland, OR 97205

P. 503.326.9000

E. [info@capacitycommercial.com](mailto:info@capacitycommercial.com)

[www.capacitycommercial.com](http://www.capacitycommercial.com)

Proud member of:

**CORFAC**  
International

The information contained herein is believed to be accurate but is not warranted as to its accuracy and may change or be updated without notice. Seller or Landlord makes no representation as to the environmental condition of the property and recommends purchaser's or tenant's independent investigation.