

MEDICAL/OFFICE SPACE FOR LEASE | GARAGE PARKING

# 1101 BEACON STREET

Brookline, Massachusetts

SUITES AVAILABLE

FROM 262 RSF - 3,539 RSF



# 1101 BEACON STREET

Boston, Massachusetts



## BUILDING SPECIFICATIONS

**Building Size:** 57,603 RSF

**Stories:** 8

**Zoning:** Medical / Office

**Year Built/Renov.:** 1900 / 1989

**Available SF:**

- Floor 1: 319 RSF
- Floor 2: 339 - 606 RSF
- Floor 3: 493 RSF
- Floor 4: 3,539 RSF
- Floor 5: 262 RSF
- Floor 6: 3,305 - 3,424 RSF
- Floor 7: 303 - 469 RSF
- Floor 8: 270 - 865 RSF
- TOTAL: 18,330 RSF**

**Rent:** Starting Mid \$30.00's RSF

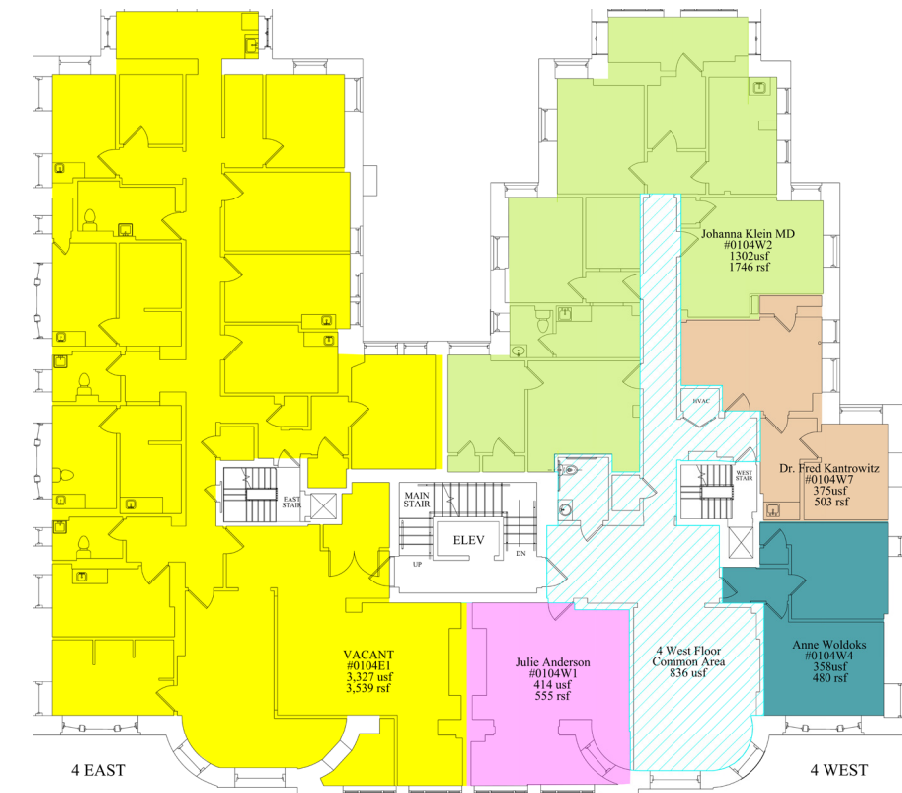
**Parking:** Garage parking available

- Notes:**
- Medical / Office
  - Handicapped accessible
  - Immediate Green Line access

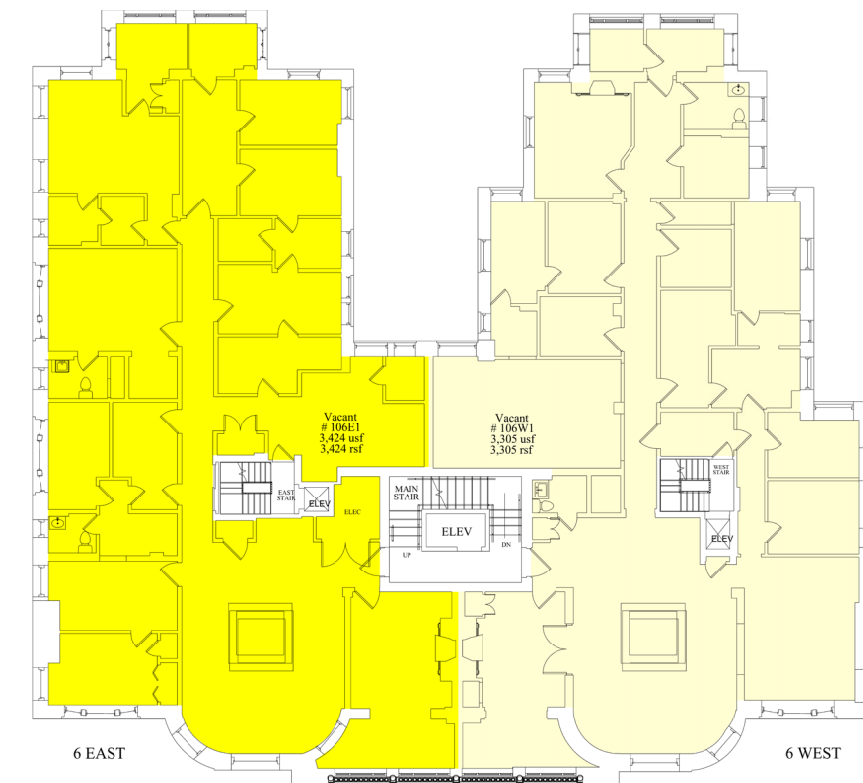


## SAMPLE FLOOR PLANS

**Floor Four: 3,539 RSF**



**Floor Six: 3,305 RSF - 3,424 RSF**



MEDICAL/OFFICE SPACE FOR LEASE

# 1101 BEACON STREET

Brookline, Massachusetts



## ACCESS



1 Minute Walk to  
Hawes Station



Close proximity  
to I-90



Close proximity  
to route 9



4.6 Miles to  
downtown Boston



6.7 Miles to Logan  
International Airport

## CONTACT US TO ARRANGE A TOUR

**PETER BEAN**

Executive Vice President

781.771.7715

pbean@hunnemanre.com



303 Congress Street, Boston, MA 02210 | 617.457.3400 | [www.hunnemanre.com](http://www.hunnemanre.com)

©2024 Hunneman. All rights reserved. All information has been obtained from sources believed reliable but no warranty or representation is verified for accuracy or completeness. Caution and independent investigation of property and information should be verified. Reliance on this information is at your own risk.