

**AVISON
YOUNG**

35

Olympia Ave

WOBURN, MA

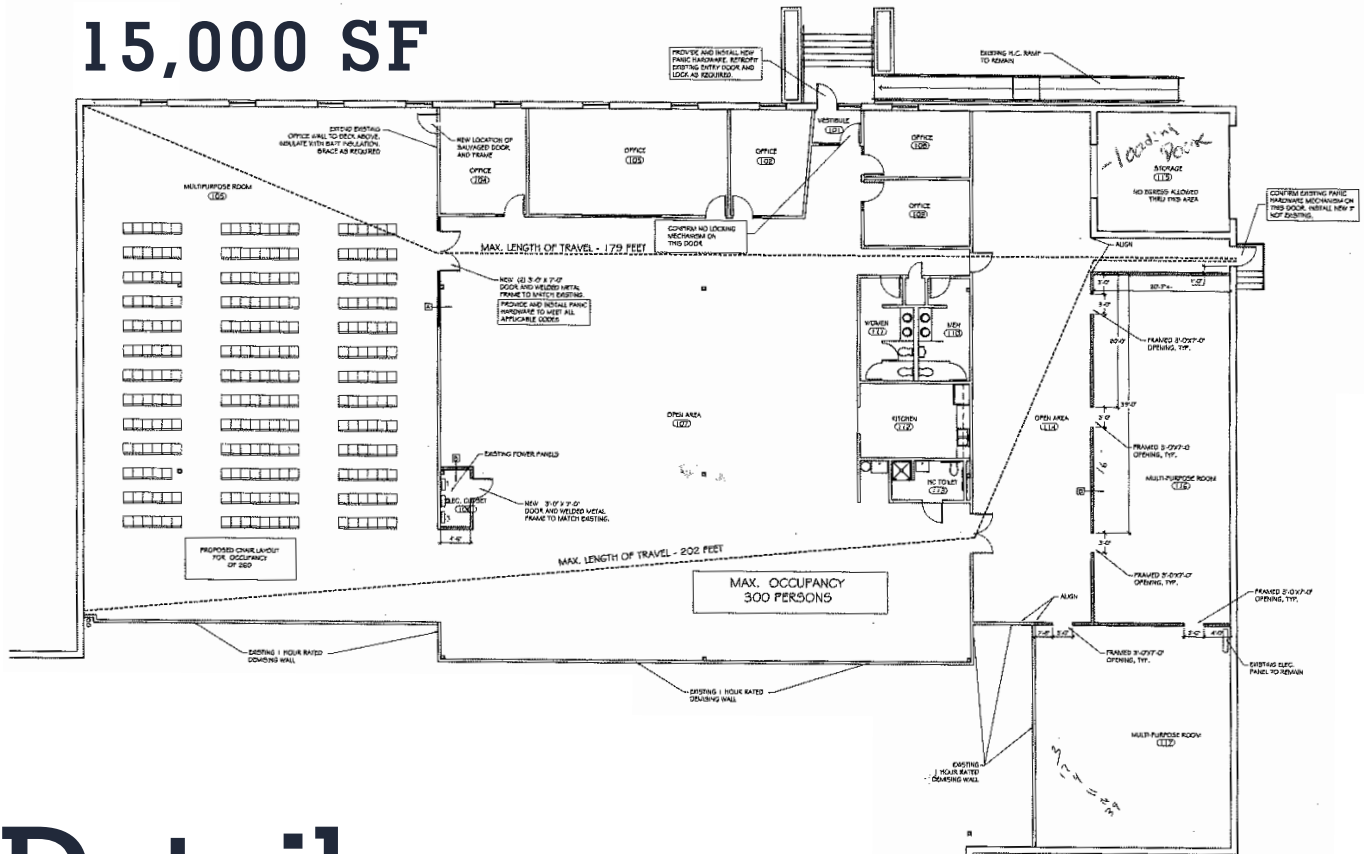


+/- 15,000 SF Available for Lease

FLEX/LIGHT MANUFACTURING, R&D AND OFFICE SPACE

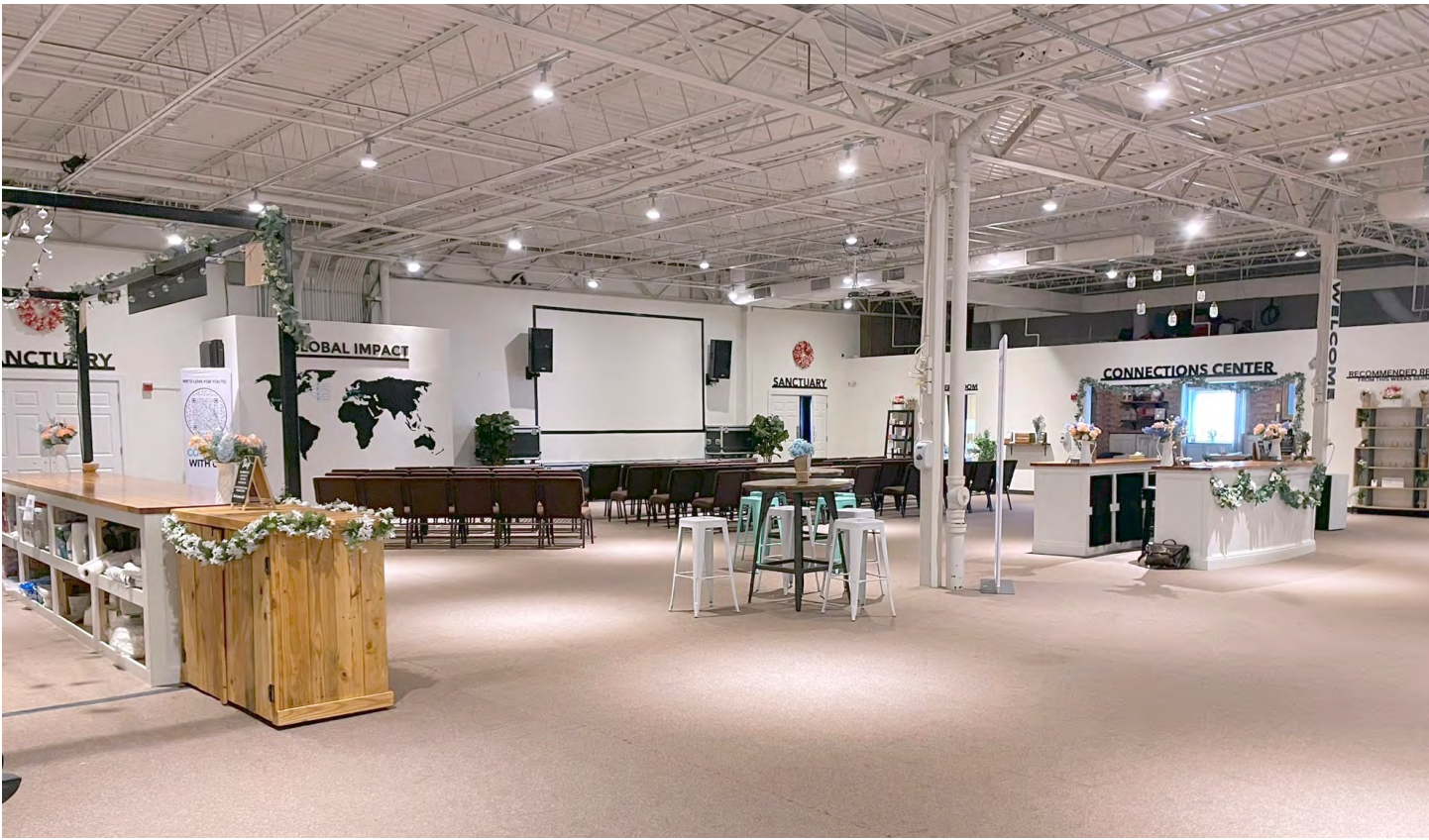
Floor plan

15,000 SF



Details

- 100% air conditioned, 6 separate zones
- One (1) interior loading dock with leveler via overhead door (15' x 14')
- Located 4 minutes away from Woburn Village containing numerous amenities, restaurants, bars, and shopping
- Column Spacing approx. 28'x 39'
- Clear height approx. 14' to underside of the bar joists
- 1.43 cars per 1,000 square feet



In the neighborhood



- Prime location ¼ mile off of Route 128 (Exit 36) and ½ mile off of I-93 (Exit 37)
- 12 miles from downtown Boston

35

Olympia Ave

WOBURN, MA

For more information, please contact:

Tom Aitken

Senior Vice President

617.462.2789

tom.aitken@avisonyoung.com

Chris Reilly

Senior Associate

781.956.8989

chris.reilly@avisonyoung.com

© 2024, Avison Young - New England, LLC. The information contained herein was obtained from sources which we deem reliable and, while thought to be correct, is not guaranteed by Avison Young and as such, cannot be warranted nor form any part of any future contract.

**AVISON
YOUNG**