



Midtown Medical Office

1900 11th Avenue
Columbus, Georgia 31901

Property Highlights

- Located in Midtown Columbus
- +/- 5,166 SF medical office
- Spacious exam rooms and private offices

Property Overview

Located in Midtown Columbus and most recently used as a pediatrician's office, this +/- 5,166 SF medical office is ideal for a medical professional looking to expand their practice. The interior layout includes a spacious waiting area, multiple exam rooms, and office spaces, all optimized to offer efficient medical care while maintaining patient privacy and comfort. This space is situated on a major street in Columbus, offering excellent visibility and accessibility from both residential and commercial areas in the region.

Offering Summary

Lease Rate:	Negotiable
Building Size:	+/- 5,166 SF
Lot Size:	+/- 0.48 Acres

Demographics 0.3 Miles 0.5 Miles 1 Mile

Total Households	217	1,161	4,469
Total Population	535	2,510	9,592
Average HH Income	\$38,556	\$40,336	\$49,467

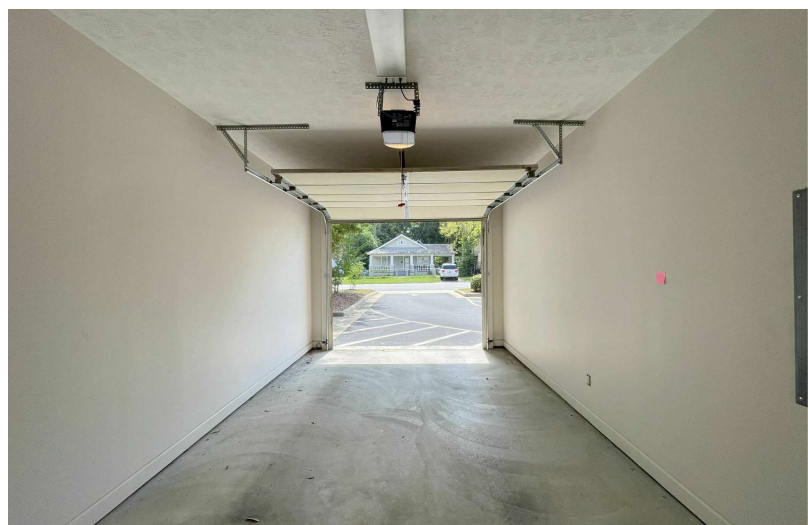
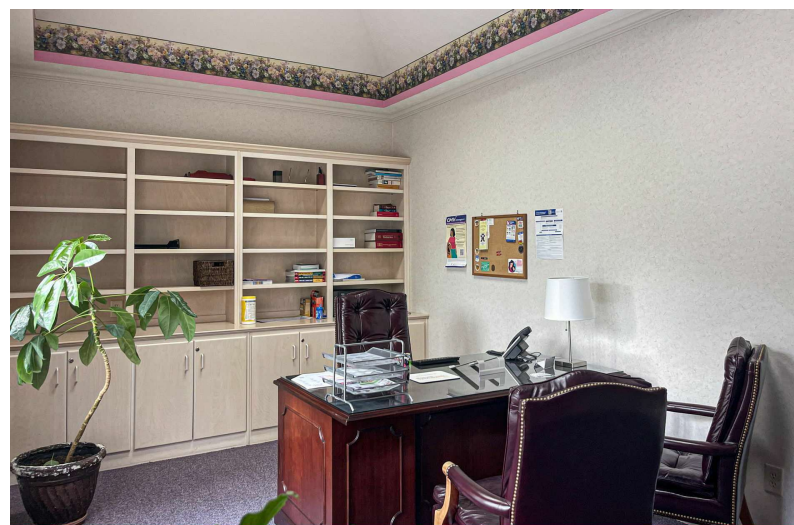
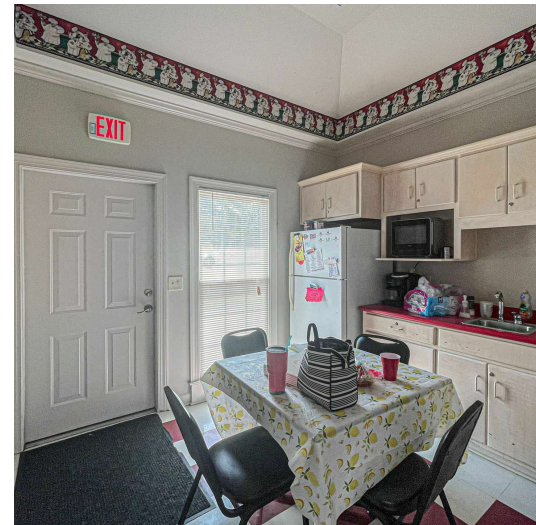
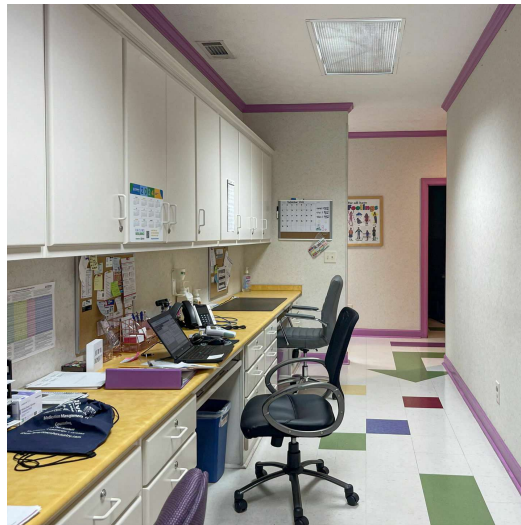
For More Information

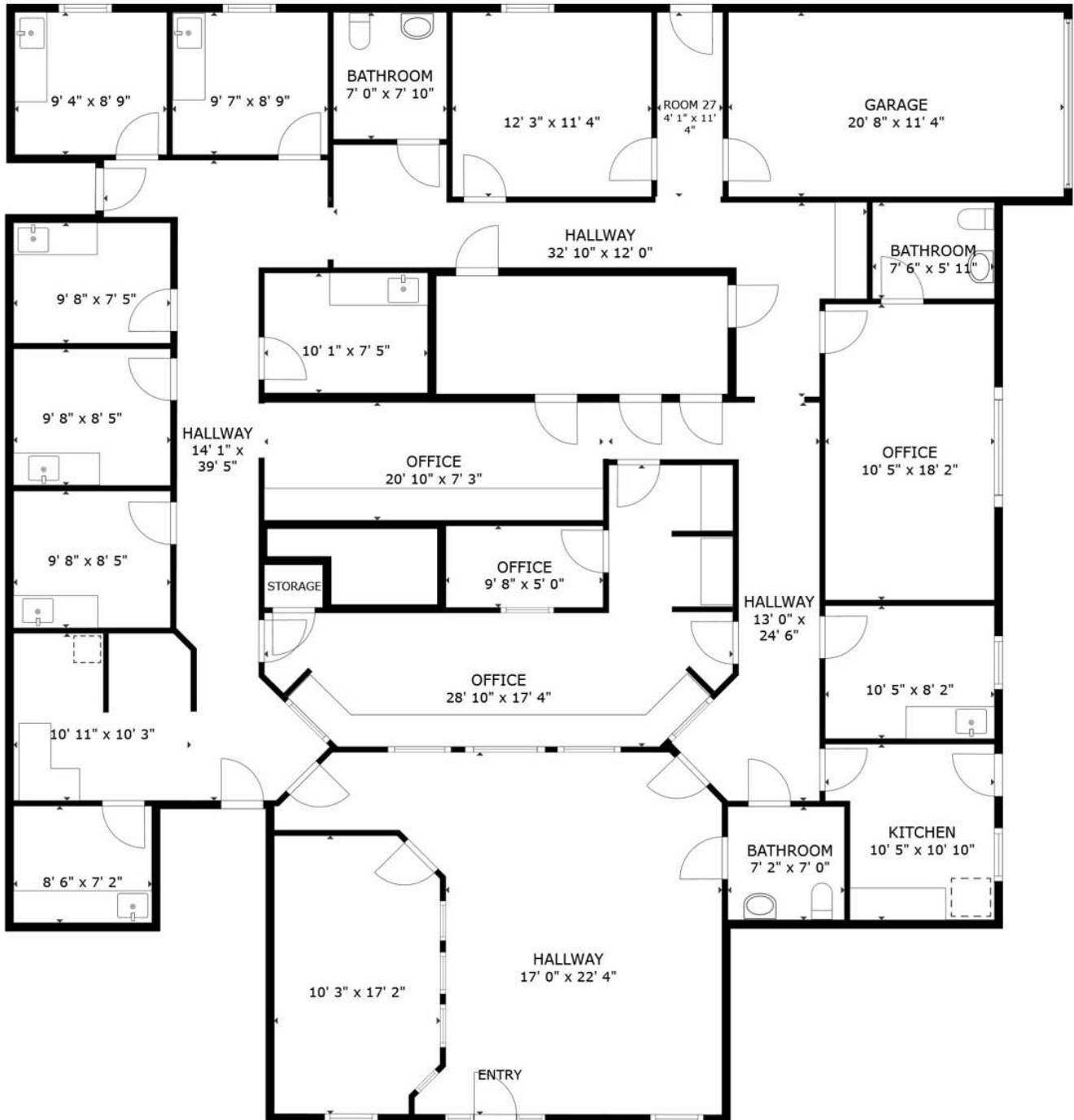
Jack Hayes, SIOR, CCIM, MICP

O: 706 660 5418 x1002 | C: 706 580 0614
jhayes@g2cre.com | GA #336627

David C. Johnson

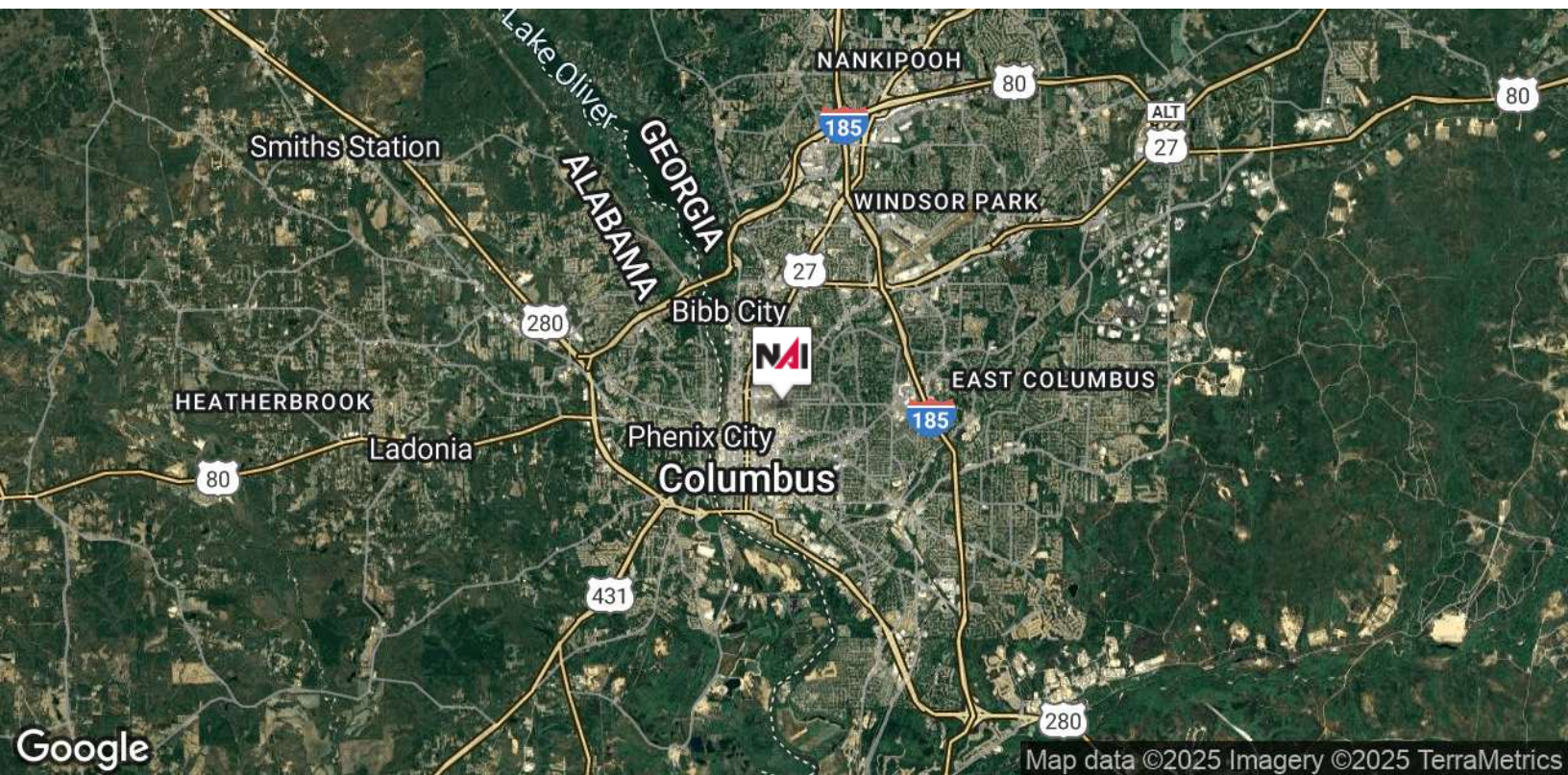
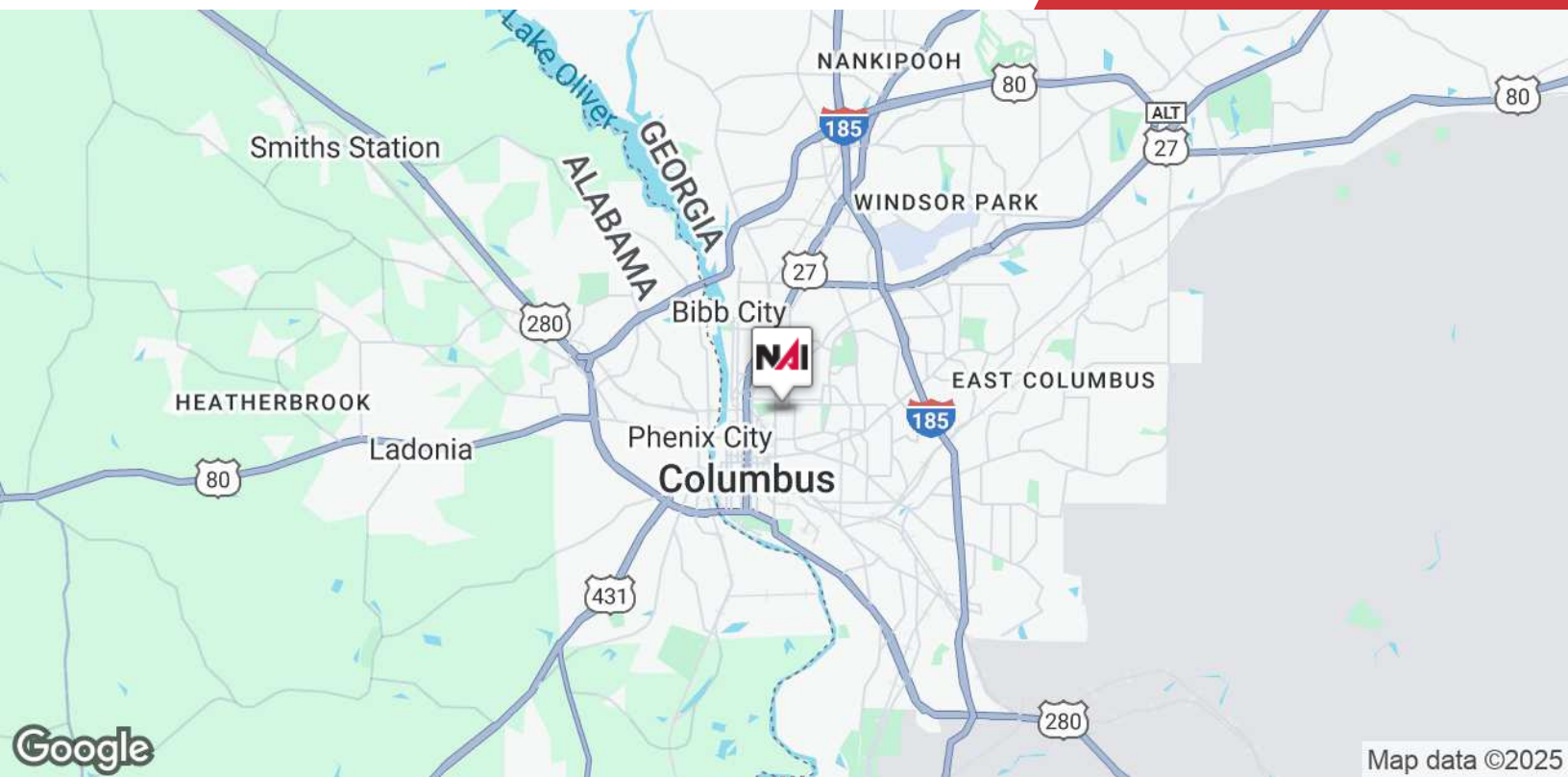
O: 706 660 5418 x1008 | C: 706 577 2398
djohnson@g2cre.com | GA #175456

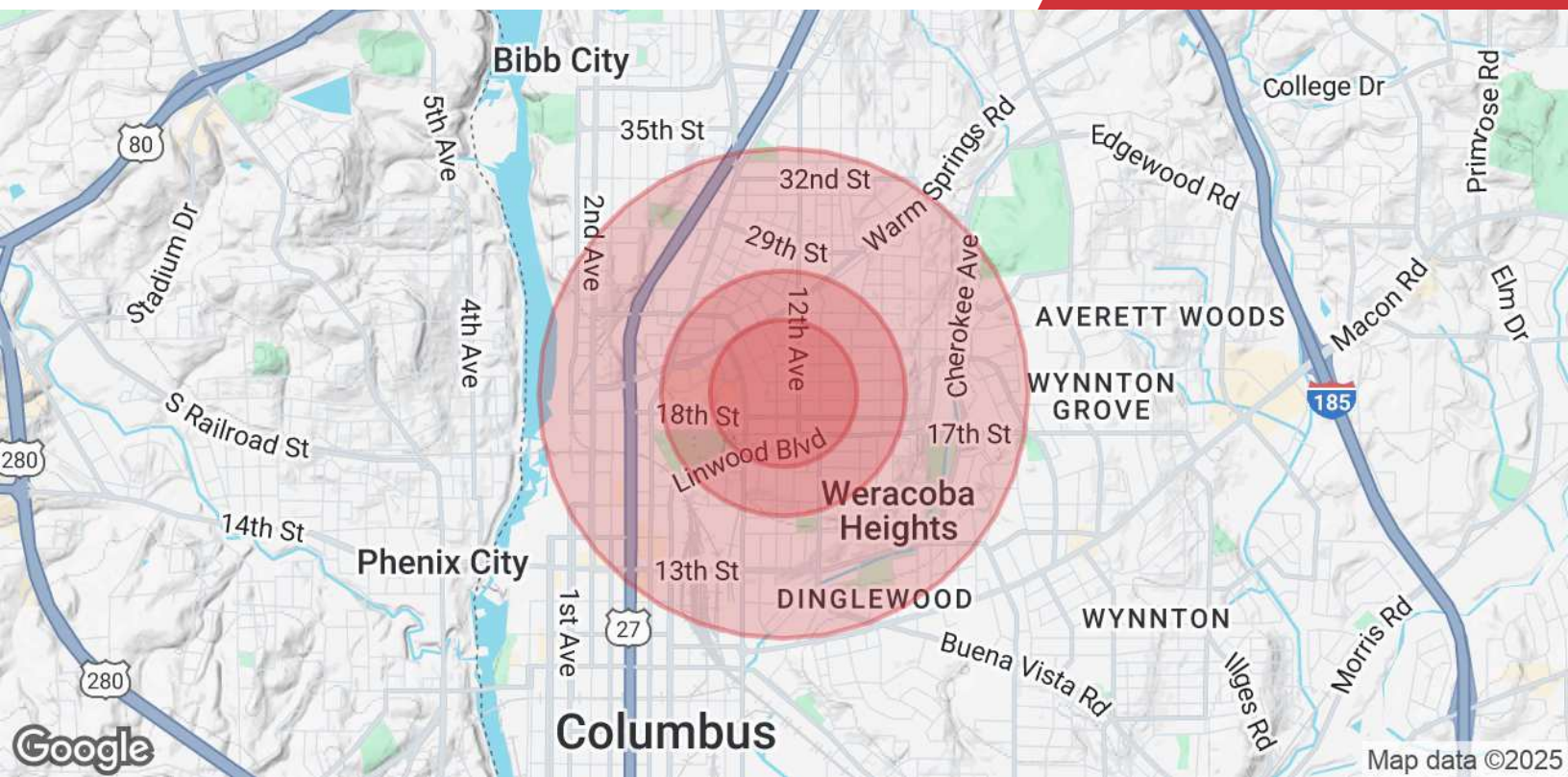



FLOOR PLAN



Map data ©2024 Imagery ©2024 Airbus, Maxar Technologies, U.S. Geological Survey





Population

	0.3 Miles	0.5 Miles	1 Mile
Total Population	535	2,510	9,592
Average Age	40	40	39
Average Age (Male)	40	39	38
Average Age (Female)	41	41	40

Households & Income

	0.3 Miles	0.5 Miles	1 Mile
Total Households	217	1,161	4,469
# of Persons per HH	2.5	2.2	2.1
Average HH Income	\$38,556	\$40,336	\$49,467
Average House Value	\$137,621	\$138,034	\$158,275

Demographics data derived from AlphaMap