

140 PREMIER DRIVE
ORION TWP., MICHIGAN

INDUSTRIAL FOR SALE OR LEASE
33,364 Square Feet Available



**SIGNATURE
ASSOCIATES**
KNOW SIGNATURE | KNOW RESULTS

ORION BUSINESS PARK



PROPERTY FEATURES

- 33,364 square feet available
- 4,160 – 7,000 square feet office
- 25' clear height
- (1) 12x14 grade level door
- Double exterior truckwell
- 62 parking spaces
- Excellent warehouse distribution facility with 100% air-conditioning and radiant heating
- 1000 amps, 480 volts power
- Located on 2.35 acres
- Zoned Lt. Industrial
- Lease Rate: \$8.75/sq. ft. NNN
- Sale Price: Contact Broker



For more information, please contact:

GARY STEPHENS
(248) 948 0104
gstephens@signatureassociates.com

JOHN BOYD
(248) 948 0102
jboyd@signatureassociates.com

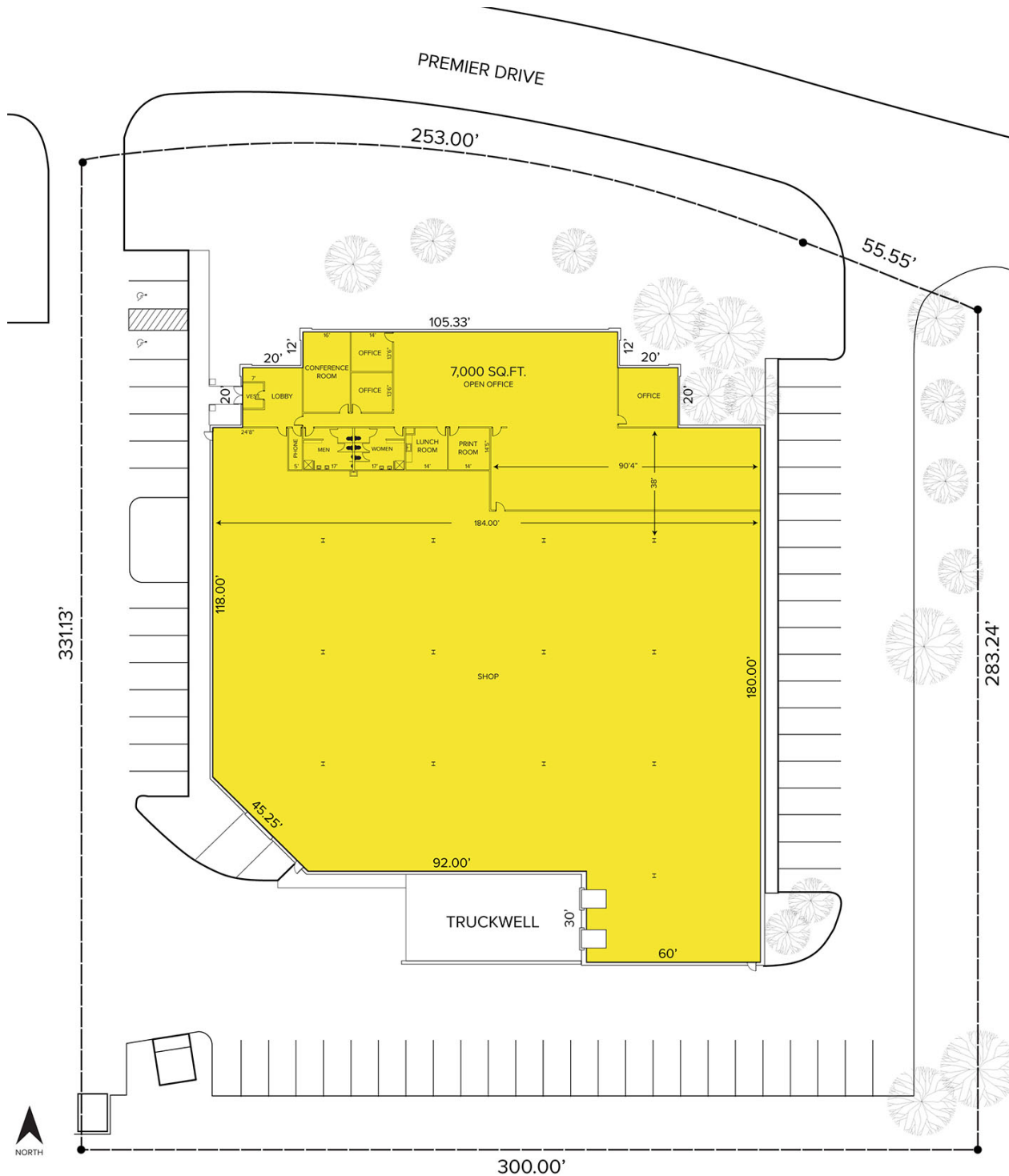
SIGNATURE ASSOCIATES
One Towne Square, Suite 1200
Southfield, MI 48076
www.signatureassociates.com

140 Premier Drive – Orion Twp., Michigan

Industrial For Sale or Lease

33,364
Square Feet
AVAILABLE

Site Plan



For more information, please contact:

GARY STEPHENS

(248) 948 0104

gstephens@signatureassociates.com

JOHN BOYD

(248) 948 0102

jboyd@signatureassociates.com

SIGNATURE ASSOCIATES

One Towne Square, Suite 1200

Southfield, MI 48076

www.signatureassociates.com

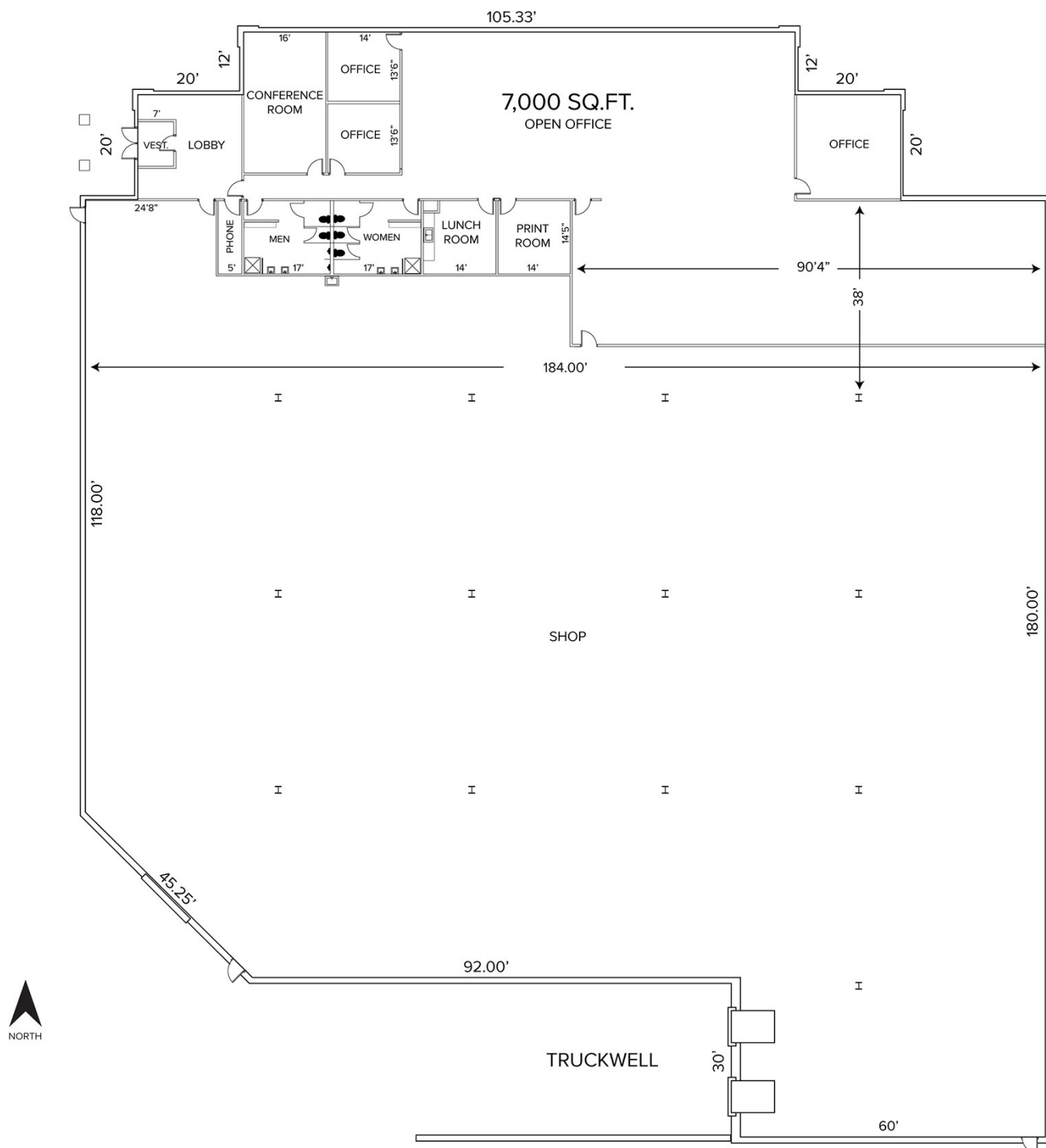
Information is subject to verification and no liability for errors or omissions is assumed. Price is subject to change and listing withdrawal.

140 Premier Drive – Orion Twp., Michigan

Industrial For Sale or Lease

33,364
Square Feet
AVAILABLE

Current Floor Plan



For more information, please contact:

GARY STEPHENS

(248) 948 0104

gstephens@signatureassociates.com

JOHN BOYD

(248) 948 0102

jboyd@signatureassociates.com

SIGNATURE ASSOCIATES

One Towne Square, Suite 1200

Southfield, MI 48076

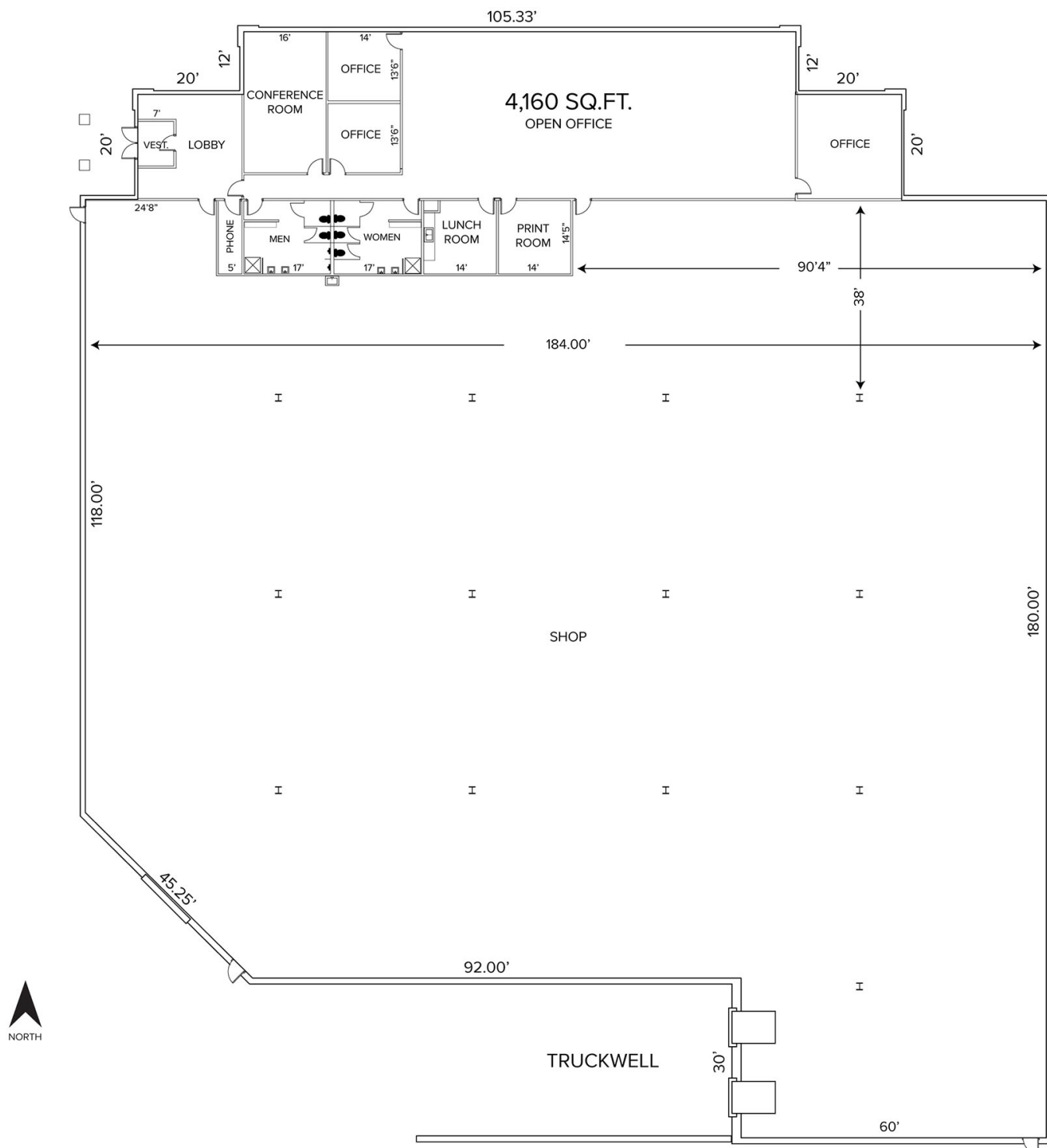
www.signatureassociates.com

140 Premier Drive – Orion Twp., Michigan

Industrial For Sale or Lease

33,364
Square Feet
AVAILABLE

Proposed Floor Plan



For more information, please contact:

GARY STEPHENS

(248) 948 0104

gstephens@signatureassociates.com

JOHN BOYD

(248) 948 0102

jboyd@signatureassociates.com

SIGNATURE ASSOCIATES

One Towne Square, Suite 1200

Southfield, MI 48076

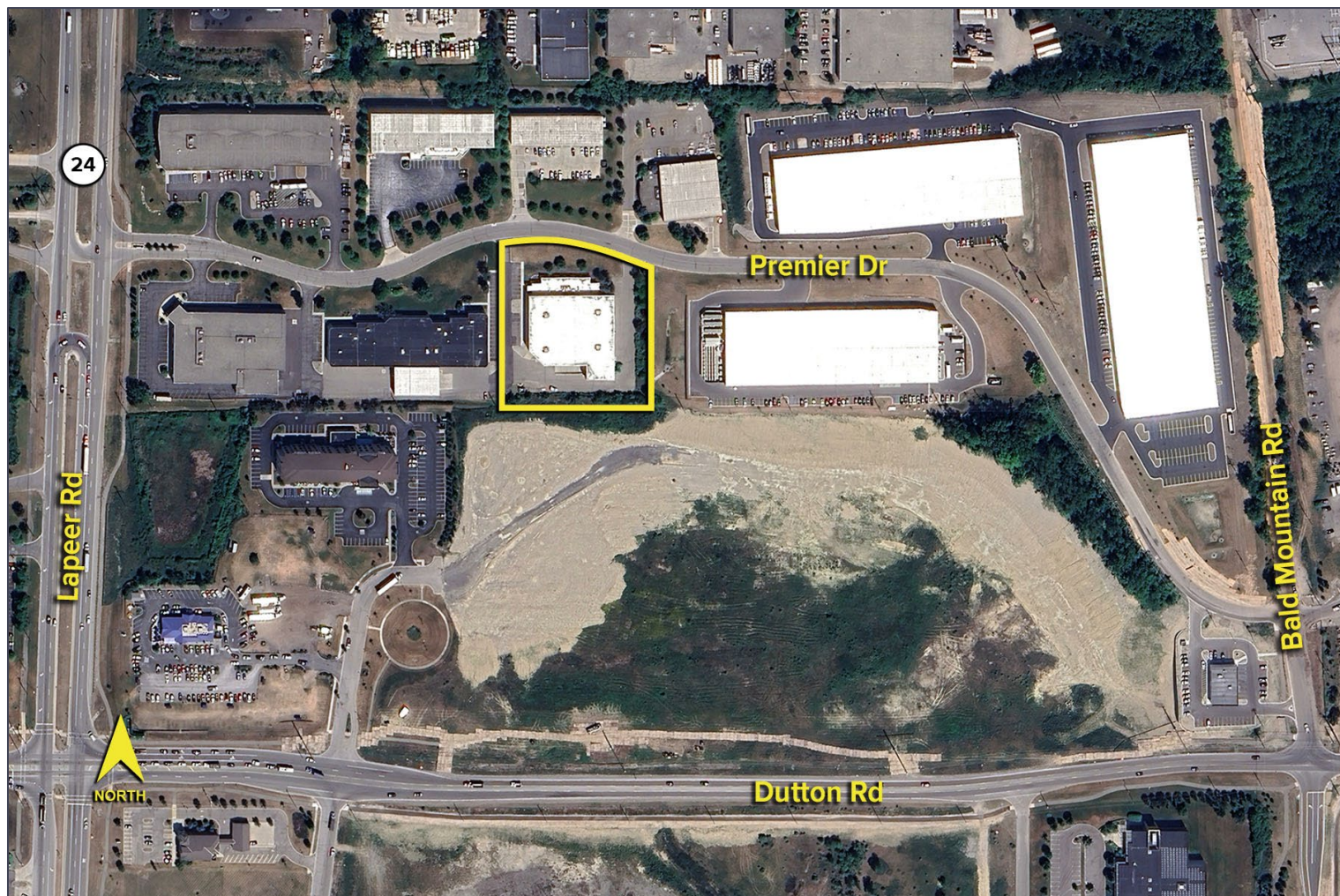
www.signatureassociates.com

140 Premier Drive – Orion Twp., Michigan

Industrial For Sale or Lease

33,364
Square Feet
AVAILABLE

Aerial



For more information, please contact:

GARY STEPHENS

(248) 948 0104

gstephens@signatureassociates.com

JOHN BOYD

(248) 948 0102

jboyd@signatureassociates.com

SIGNATURE ASSOCIATES

One Towne Square, Suite 1200

Southfield, MI 48076

www.signatureassociates.com

Information is subject to verification and no liability for errors or omissions is assumed. Price is subject to change and listing withdrawal.