



228

SOUTH FOURTH STREET
LAS VEGAS, NV

±13,852 SF | Three-Story Professional Office Building in Downtown Las Vegas

FOR LEASE

PROPERTY DESCRIPTION



LEASE RATE

\$2.00 FSG



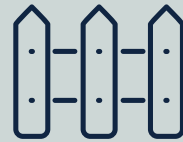
APN

139-34-210-079
139-34-210-080



BUILDING SIZE

±13,852 SF



LOT SIZE

±0.41 AC



YEAR BUILT

1963



OF FLOORS

THREE



PARKING

39
ONSITE STALLS



ZONING

COMMERCIAL (C-2)
CITY OF LAS VEGAS

Purchase Opportunity Also Available

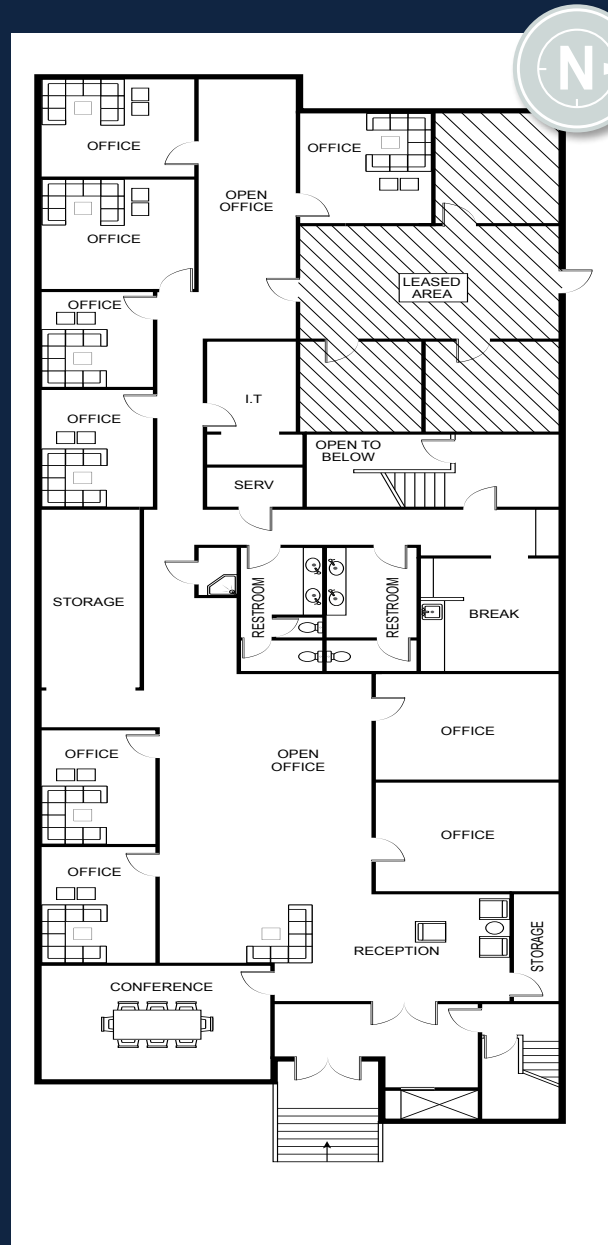


PROPERTY FLOOR PLANS

1ST FLOOR | SUITE 100

Available upon 60 day notice

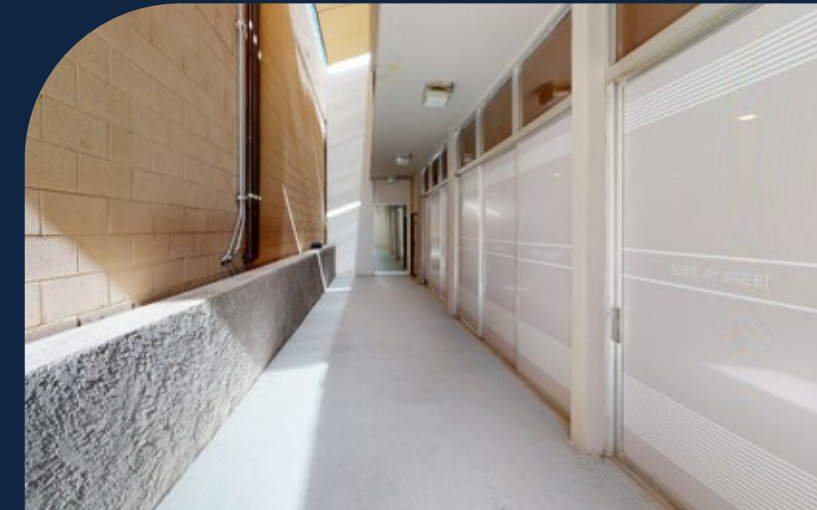
2ND FLOOR | SUITE 200



6,000 RSF



3,000 RSF



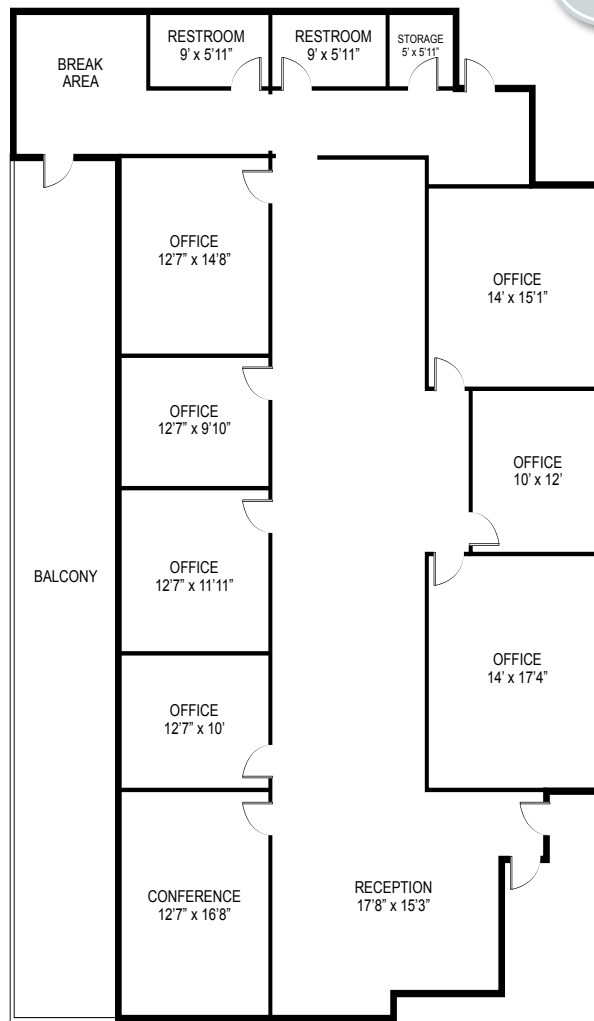
VIRTUAL TOUR



VIRTUAL TOUR



3RD FLOOR | SUITE 300



3,000 RSF



VIRTUAL TOUR



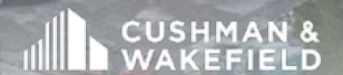
CONTACTS

CODY SEAGER
SENIOR ASSOCIATE
+1 702 605 1648
cody.seager@cushwake.com
Lic. #BS.0145582

INVESTMENT SALES

MARLENE FUJITA, CCIM
EXECUTIVE DIRECTOR
+1 702 688 6884
marlene.fujita@cushwake.com
Lic. #S.0054013

EMILY BRUN
SENIOR ASSOCIATE
+1 702 605 1549
emily.brun@cushwake.com
Lic. #S.0196293



6725 Via Austi Pkwy | Suite 275 | Las Vegas, NV 89119