

1700 S. Butterfield Road, Mundelein, IL

30,000 SF Available

FOR SUBLEASE

30,000 SF | Longer Term Available at Market Rate

AVAILABLE: 30,000 SF (East Unit)

OFFICE: 2,641 SF

CEILING: 20' Clear

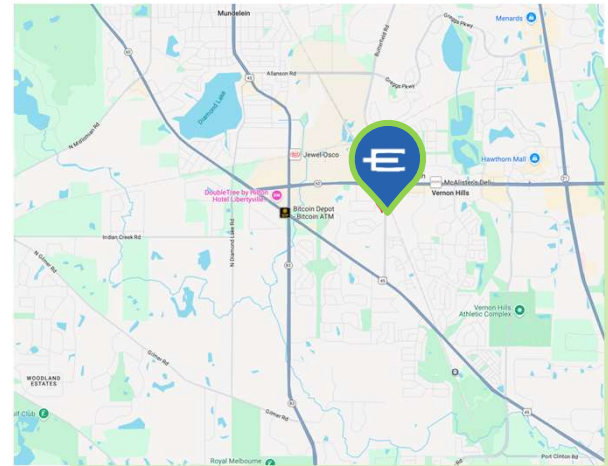
LOADING: 2 Interior Docks

POWEER: 400 Amps

ZONING: M1

SPRINKLERS: Yes

FOR SUBLEASE: \$19,750 Per Month (\$7.90 PSF)



- Longer Term Available at Market Rate
- Great Location with Frontage on Butterfield Rd.
- Functional Space
- Lower Lake County Taxes

SCAN FOR LISTING

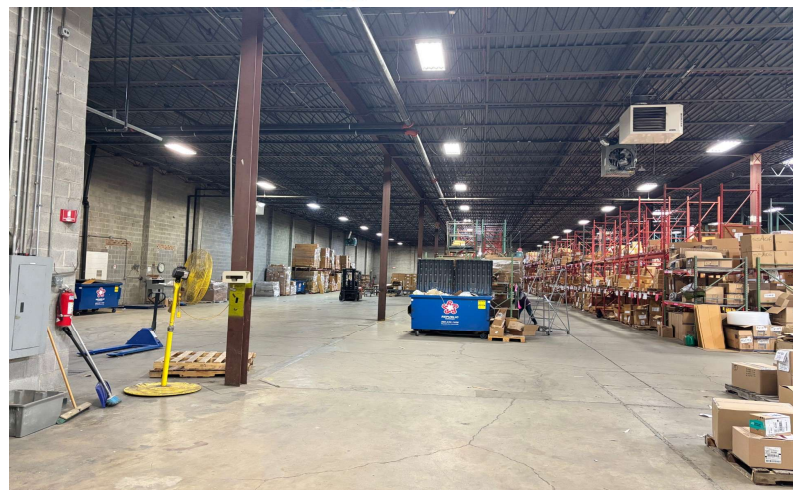
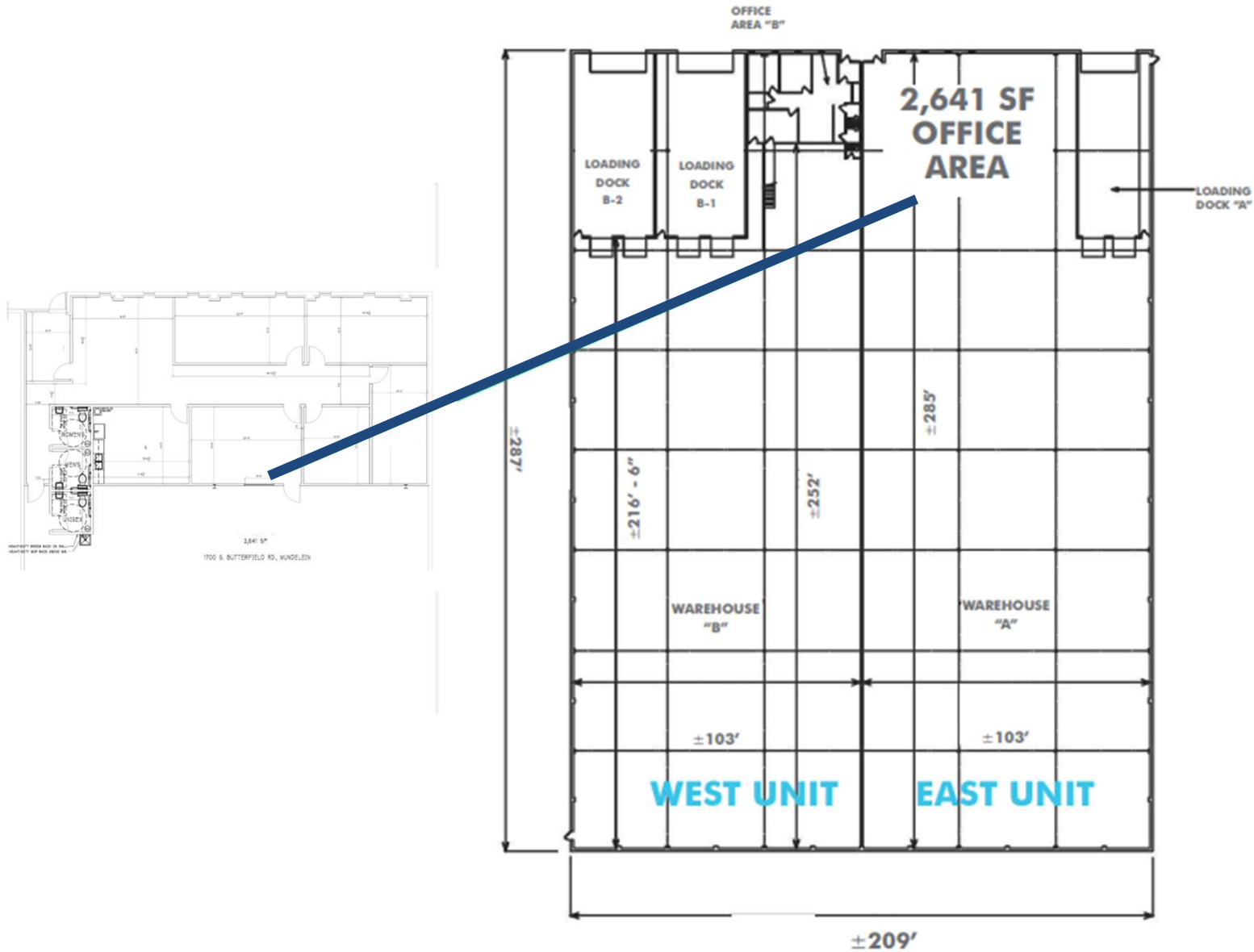


ENTRE
Commercial Realty LLC

Brian Bocci, SIOR
847-310-4296
bbocci@entreccommercial.com

The information contained herein is from sources deemed reliable but is submitted subject to errors, omissions and to change of price or terms without notice.

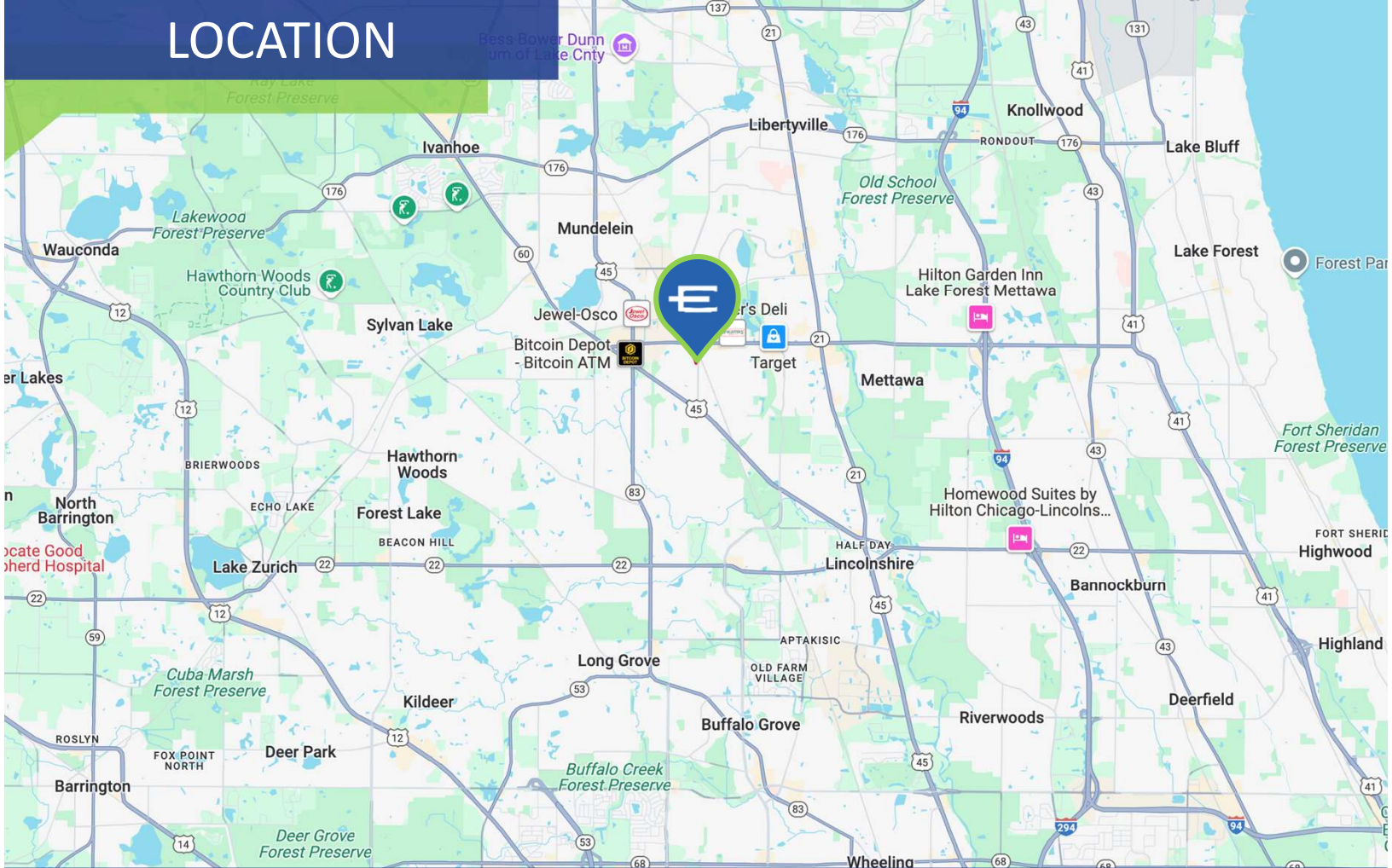
FLOORPLAN



ENTRE
Commercial Realty LLC

Brian Bocci, SIOR
847-310-4296
bbocci@entrecommercial.com

LOCATION



1700 S. Butterfield Road, Mundelein, IL

Located within Mundelein's well-established industrial corridor, 1700 S. Butterfield Road offers a prime distribution sublease opportunity. This unit provides convenient access to major thoroughfares including IL-60 and IL-83, allowing for efficient transportation. The area supports a variety of industrial and commercial businesses, making it ideal for manufacturing operations seeking a functional space in a strategic, business-friendly location. Nearby amenities, public transportation options, and a skilled local workforce enhance the appeal of this sublease.