

# 5727-5767 Executive Dr E

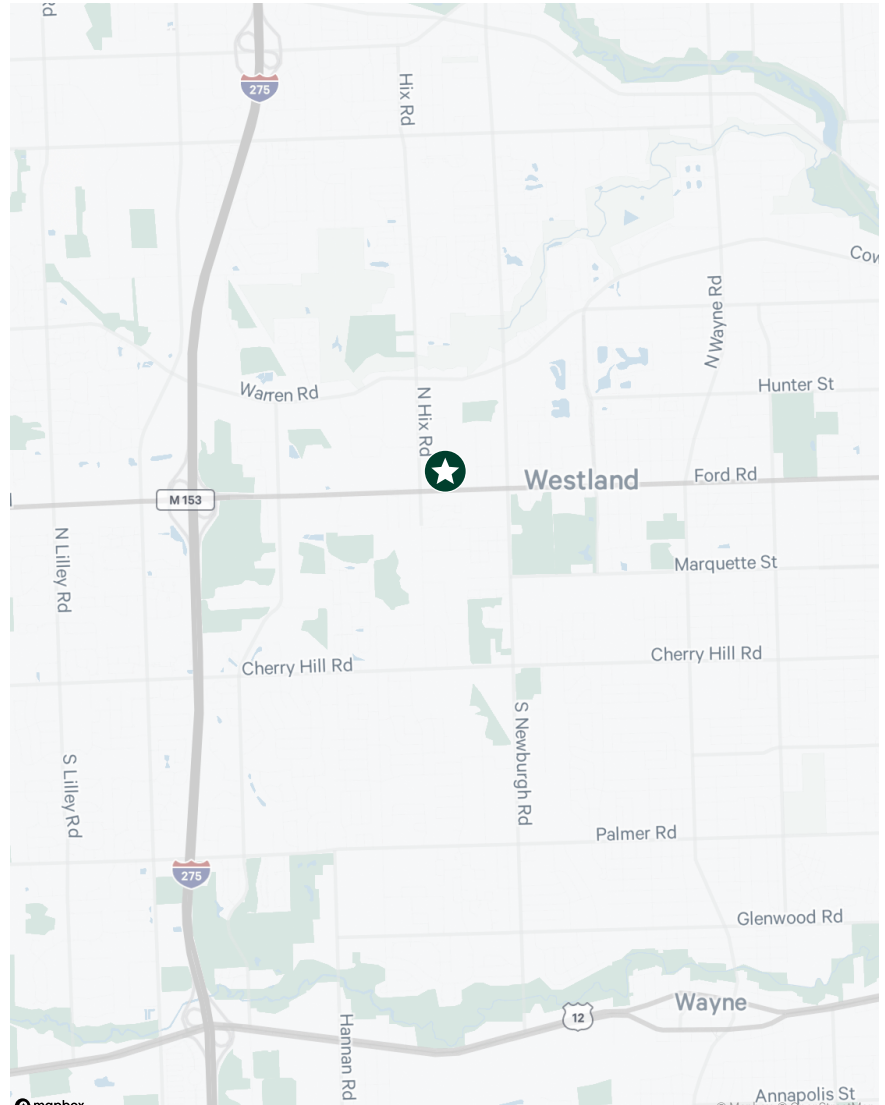
Westland, MI

5,000 - 10,000 SF Available



# Property Features

- + 20,000 SF Building
- + 5,000 - 10,000 SF Available For Lease
- + Approximately 1,200 Sf of Office
- + Bonus Mezzanine Space
- + Three (3) Grade Level Doors
- + ± 20 Parking Spaces
- + Lease Rate: \$7.75/SF NNN



## Contact Us

**Mike  
Balow**

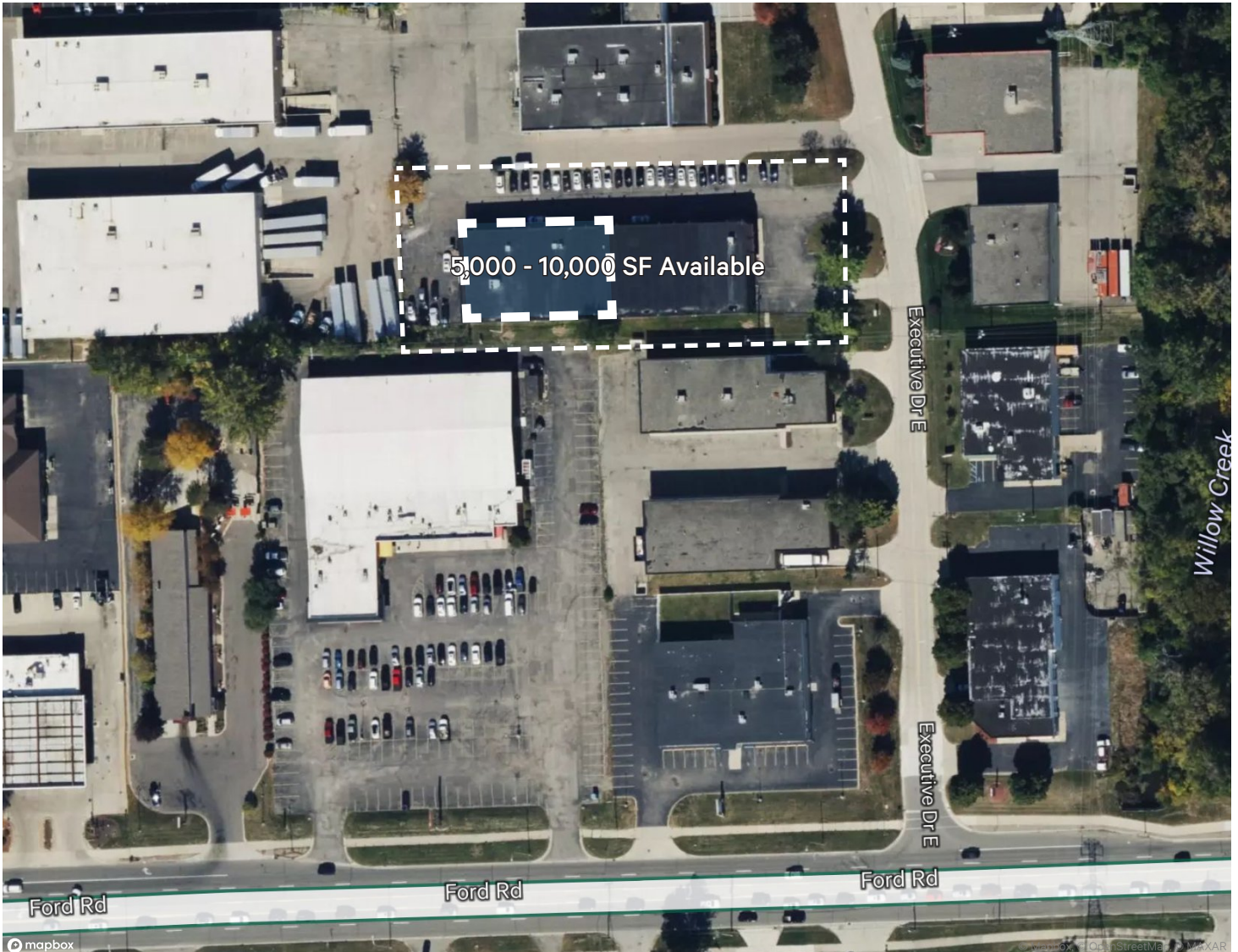
Vice President  
+1 734 634 6558  
michael.balow@cbre.com

**Matt  
Osiecki**

First Vice President  
+1 248 351 2079  
matt.osiecki@cbre.com

© 2024 CBRE, Inc. All rights reserved. This information has been obtained from sources believed reliable but has not been verified for accuracy or completeness. CBRE, Inc. makes no guarantee, representation or warranty and accepts no responsibility or liability as to the accuracy, completeness, or reliability of the information contained herein. You should conduct a careful, independent investigation of the property and verify all information. Any reliance on this information is solely at your own risk.

# Property Aerial



## Contact Us

**Mike Balow**  
Vice President  
+1 734 634 6558  
michael.balow@cbre.com

**Matt Osiecki**  
First Vice President  
+1 248 351 2079  
matt.osiecki@cbre.com

© 2024 CBRE, Inc. All rights reserved. This information has been obtained from sources believed reliable but has not been verified for accuracy or completeness. CBRE, Inc. makes no guarantee, representation or warranty and accepts no responsibility or liability as to the accuracy, completeness, or reliability of the information contained herein. You should conduct a careful, independent investigation of the property and verify all information. Any reliance on this information is solely at your own risk.

# Property Overview

- + County: Wayne
- + Total Building Size: 20,000 SF
- + Lease Rate: \$7.75/SF NNN
- + Zoning: Light Industrial
- + Divisible (Min/Max): 5,000 - 10,000 SF

Year Built:	1986	Parking:	+/- 20
Total Available:	20,000 SF	HVAC:	GFA
Available Office:	Approx. 1,200 SF	Power:	240v/600amp/3 phase
Acreage	1.37 Acres	Security System:	Per Tenant
Ceiling Height:	20'	Restrooms:	One (1) Unisex
Divisible:	No	Lighting:	Florescent
Construction:	Masonry with Steel	Grade Level Doors:	Three (3)
Roof:	Rubber Membrane	Floor Drains:	None
Stories:	One (1)		

## Comments

- + Well maintained 20,000 SF Building with 10,000 SF available to lease
- + Three (3) grade level doors
- + Mezzanine space not included in SF

## Contact Us

**Mike Balow**  
Vice President  
+1 734 634 6558  
michael.balow@cbre.com

**Matt Osiecki**  
First Vice President  
+1 248 351 2079  
matt.osiecki@cbre.com

© 2024 CBRE, Inc. All rights reserved. This information has been obtained from sources believed reliable but has not been verified for accuracy or completeness. CBRE, Inc. makes no guarantee, representation or warranty and accepts no responsibility or liability as to the accuracy, completeness, or reliability of the information contained herein. You should conduct a careful, independent investigation of the property and verify all information. Any reliance on this information is solely at your own risk.