

1999 W. 75th Street

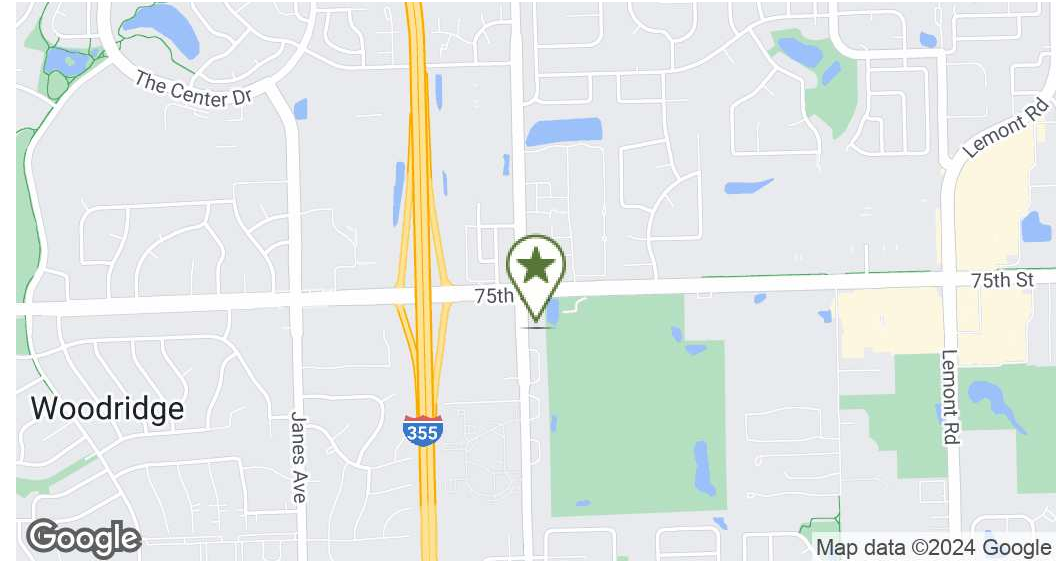
Woodridge, IL 60517

OFFICE SPACES FOR LEASE



john
greene
COMMERCIAL

john greene Commercial | 1311 S Route 59, Naperville, IL 60564 | 630.229.2290



OFFERING SUMMARY

| | |
|----------------------|----------------------|
| Lot Size: | 2.58 Acres |
| Year Built: | 1987 |
| Total Building Size: | 12,000 SF |
| Zoning: | B-1S |
| Traffic Count: | 32,300 (75th Street) |

PROPERTY HIGHLIGHTS

- Prominent location near IL-355 and 75th Street
- Professionally managed
- Elevator
- Ample Parking

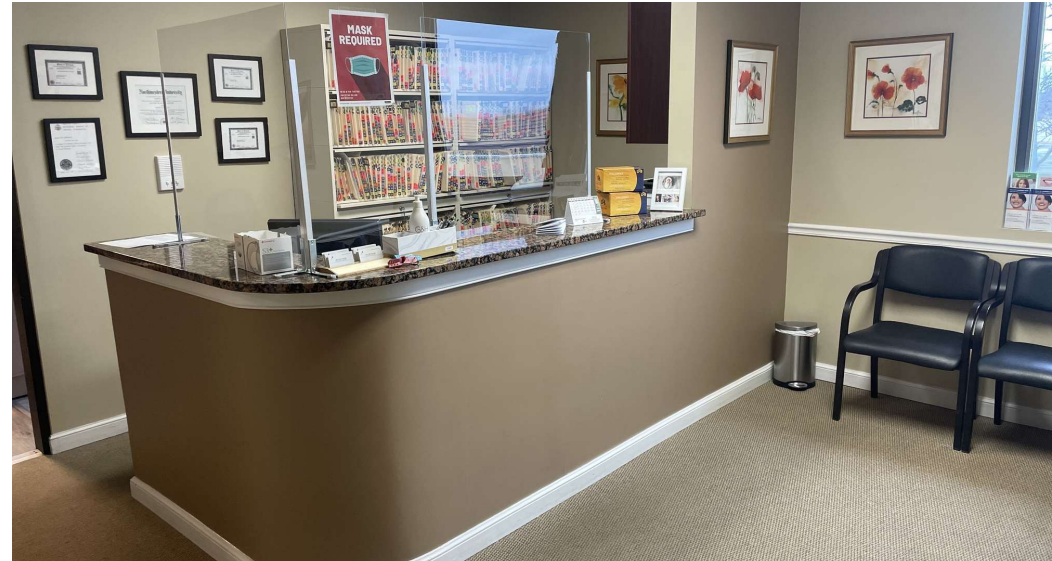
| SPACES | LEASE RATE | LEASE TYPE | SPACE SIZE |
|-----------|-------------------|------------|------------|
| Suite 201 | \$1,300 per month | MG | 843 SF |
| Suite 204 | \$2,225 per month | MG | 1,095 SF |

Jon Waldron
jonwaldron@johngreenecommercial.com
815.693.0544

The information contained herein is from sources john greene Real Estate deems reliable, but is not guaranteed. This offer may be withdrawn from the market or be subject to a change in price or terms without advance notice. Seller reserves the right to reject any and all offers. Duplication is expressly prohibited. 2019



john greene Commercial | 1311 S Route 59, Naperville, IL 60564 | 630.229.2290



Jon Waldron
jonwaldron@johngreenecommercial.com
815.693.0544

The information contained herein is from sources John Greene Real Estate deems reliable, but is not guaranteed. This offer may be withdrawn from the market or be subject to a change in price or terms without advance notice. Seller reserves the right to reject any and all offers. Duplication is expressly prohibited. 2019

1999 W. 75th Street | Woodridge, IL 60517

SUITE 201

john greene Commercial | 1311 S Route 59, Naperville, IL 60564 | 630.229.2290



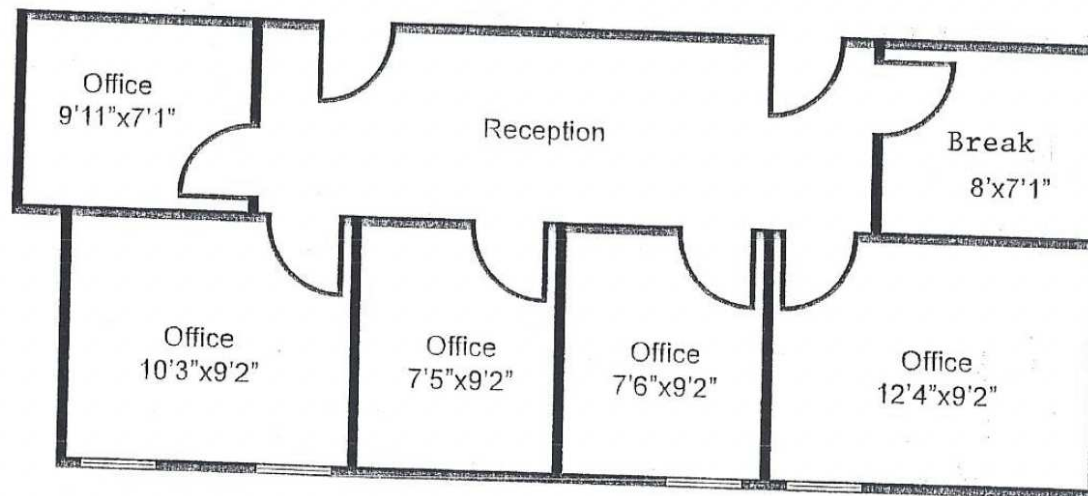
Jon Waldron
jonwaldron@johngreenecommercial.com
815.693.0544

The information contained herein is from sources john greene Real Estate deems reliable, but is not guaranteed. This offer may be withdrawn from the market or be subject to a change in price or terms without advance notice. Seller reserves the right to reject any and all offers. Duplication is expressly prohibited. 2019



john greene Commercial | 1311 S Route 59, Naperville, IL 60564 | 630.229.2290

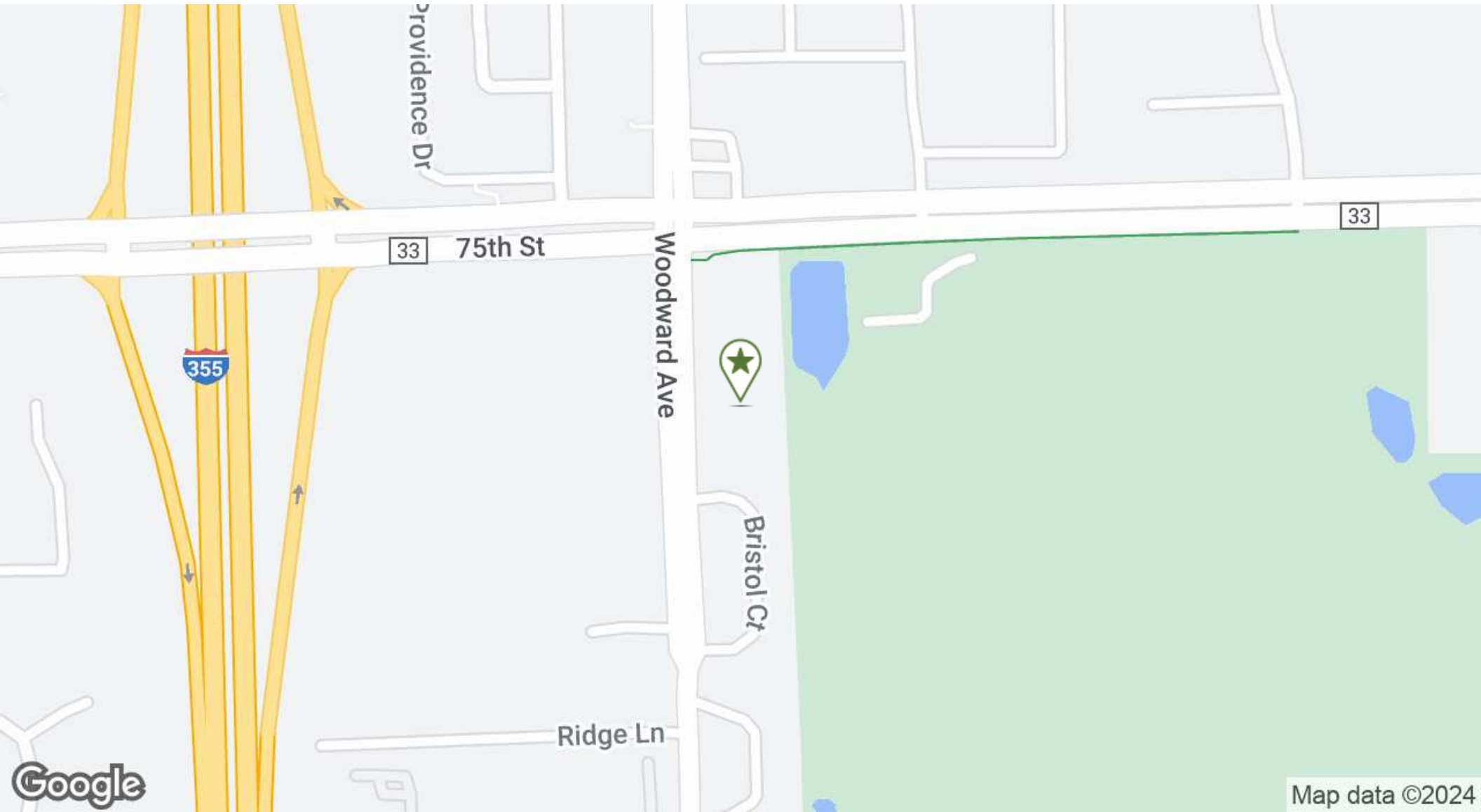
Suite 201 - 843 Sq. Ft.



1999 W. 75th Street | Woodridge, IL 60517

OFFICE SPACES FOR LEASE

john greene Commercial | 1311 S Route 59, Naperville, IL 60564 | 630.229.2290



Jon Waldron
jonwaldron@johngreenecommercial.com
815.693.0544

The information contained herein is from sources john greene Real Estate deems reliable, but is not guaranteed. This offer may be withdrawn from the market or be subject to a change in price or terms without advance notice. Seller reserves the right to reject any and all offers. Duplication is expressly prohibited. 2019

**john
greene**
COMMERCIAL

1999 W. 75th Street | Woodridge, IL 60517

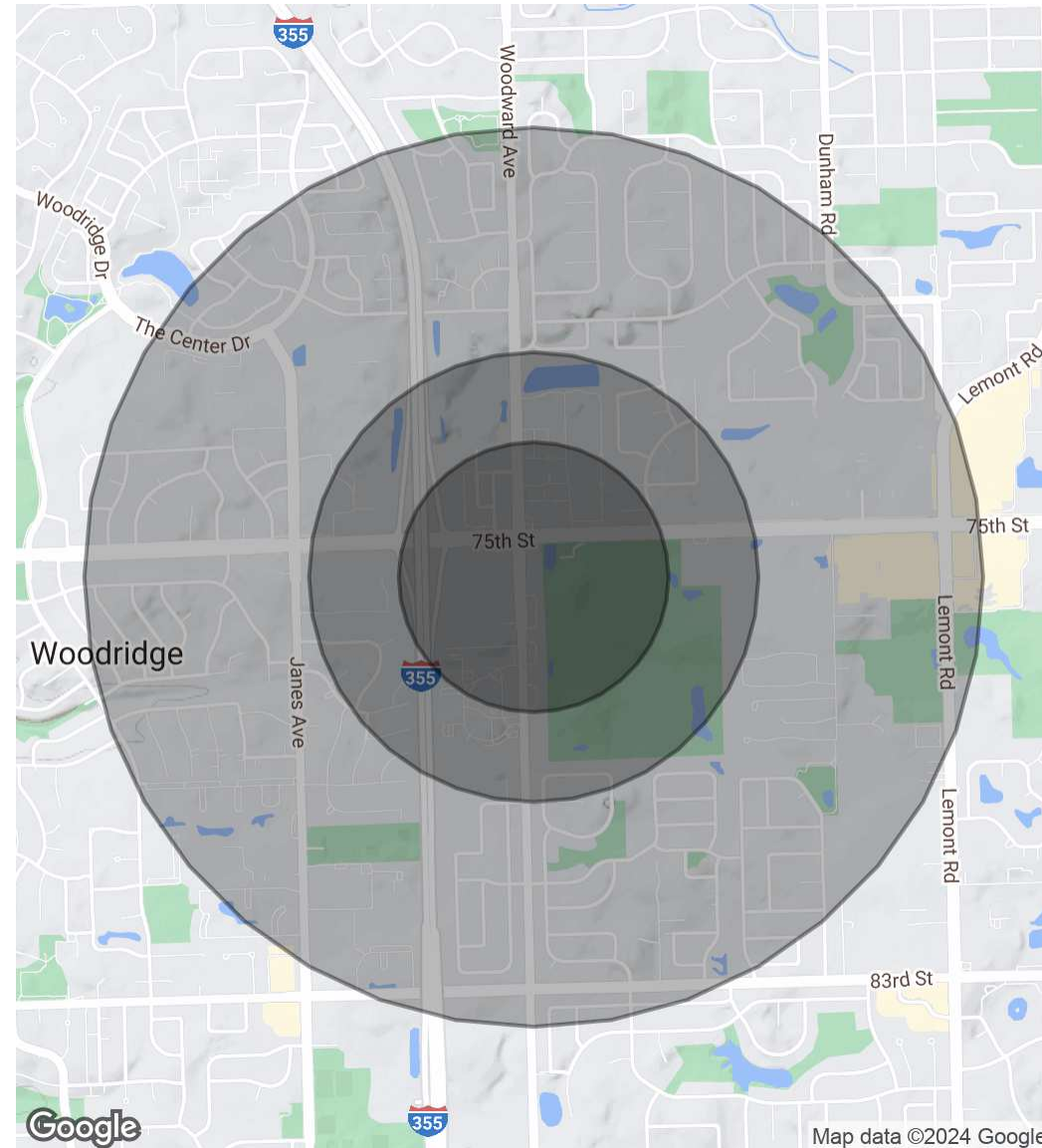
OFFICE SPACES FOR LEASE

john greene Commercial | 1311 S Route 59, Naperville, IL 60564 | 630.229.2290

| POPULATION | 0.3 MILES | 0.5 MILES | 1 MILE |
|----------------------|-----------|-----------|--------|
| Total Population | 1,652 | 4,373 | 15,203 |
| Average Age | 38 | 38 | 40 |
| Average Age (Male) | 37 | 38 | 39 |
| Average Age (Female) | 38 | 39 | 40 |

| HOUSEHOLDS & INCOME | 0.3 MILES | 0.5 MILES | 1 MILE |
|---------------------|-----------|-----------|-----------|
| Total Households | 668 | 1,812 | 5,832 |
| # of Persons per HH | 2.5 | 2.4 | 2.6 |
| Average HH Income | \$128,234 | \$119,140 | \$123,504 |
| Average House Value | \$428,474 | \$428,153 | \$391,208 |

Demographics data derived from AlphaMap



Jon Waldron
jonwaldron@johngreenecommercial.com
815.693.0544

The information contained herein is from sources john greene Real Estate deems reliable, but is not guaranteed. This offer may be withdrawn from the market or be subject to a change in price or terms without advance notice. Seller reserves the right to reject any and all offers. Duplication is expressly prohibited. 2019

