

OFFICE SPACE *FOR LEASE*

11840-11856 DUBLIN BLVD, DUBLIN, CA 94568



Dublin Technology Center has office space available for lease with close proximity to shopping and other attractions

±478 SF to ±688 RSF available

Walk to dining and shopping establishments

Convenient location to I-580, I-680, and West Dublin/Pleasanton BART station

Short-term lease available

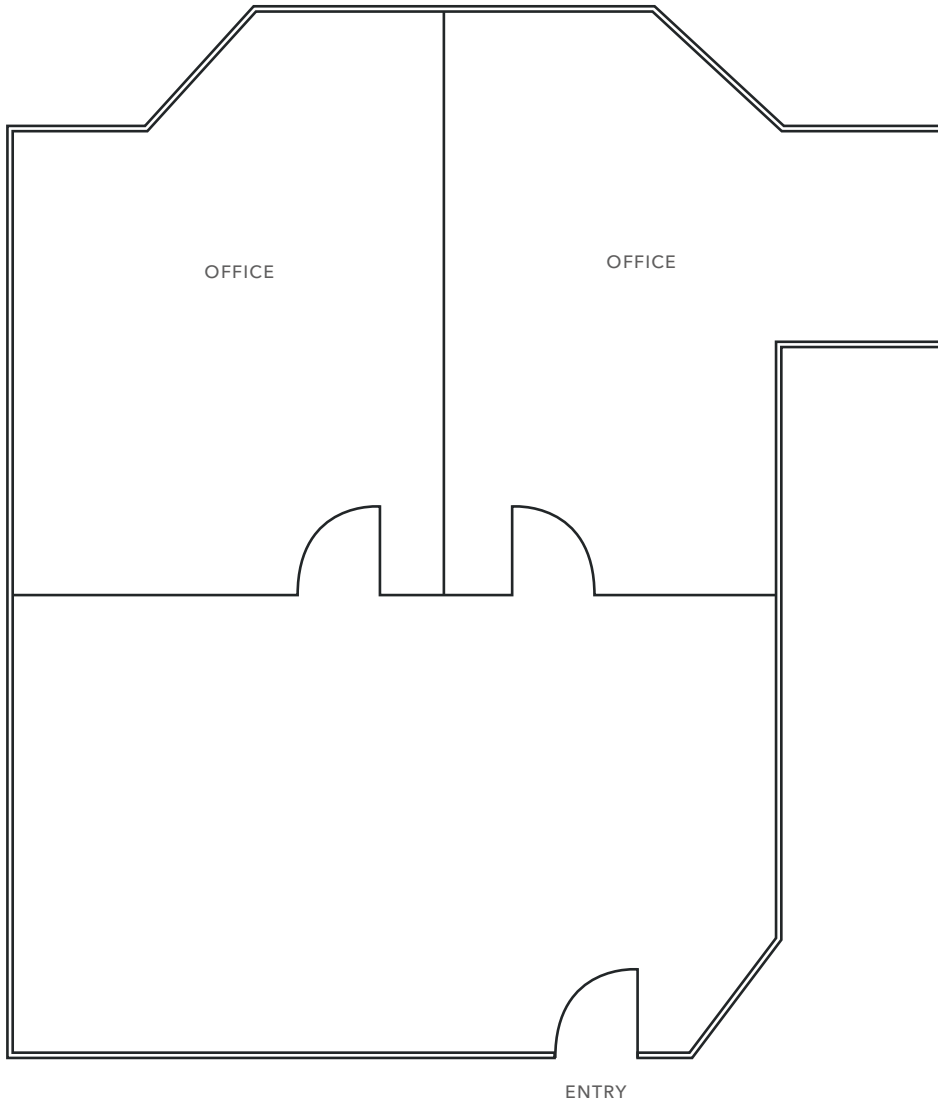
This information supplied herein is from sources we deem reliable. It is provided without any representation, warranty, or guarantee, expressed or implied as to its accuracy. Prospective Buyer or Tenant should conduct an independent investigation and verification of all matters deemed to be material, including, but not limited to, statements of income and expenses. Consult your attorney, accountant, or other professional advisor.

WILL BALLOWE
925.905.1118
will.ballowe@kidder.com
LIC N° 02053125

KIDDER.COM

km Kidder
Mathews

11844 - SUITE A



±688 SF

AVAILABLE

CALL

BROKER FOR LEASE RATE

NOW

AVAILABLE

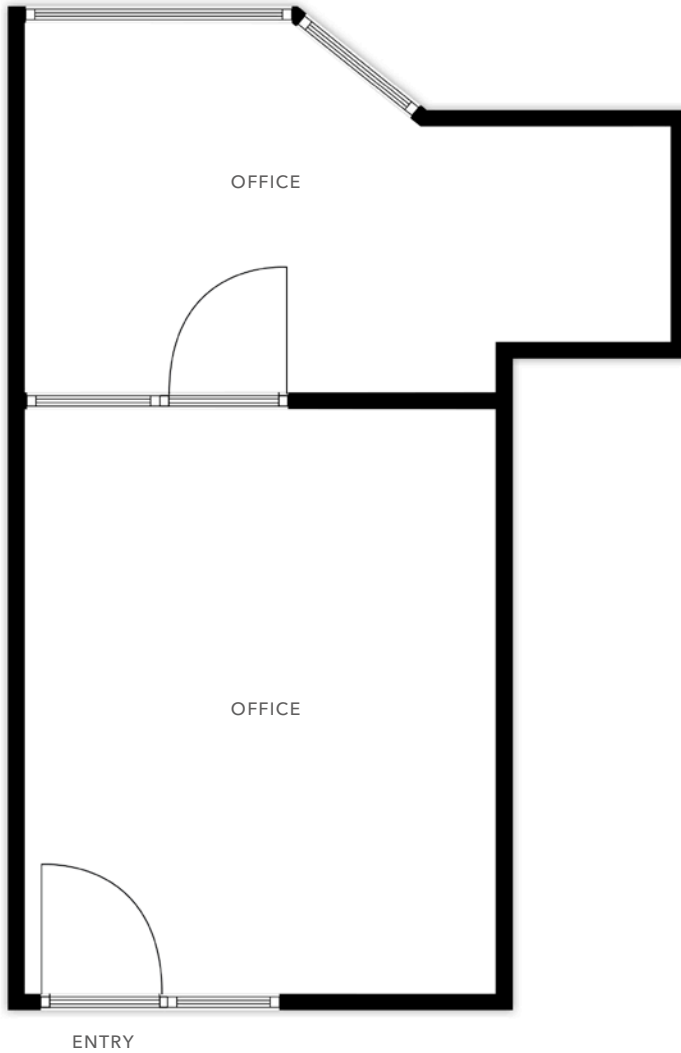
WILL BALLOWE 925.905.1118 | will.ballowe@kidder.com | LIC N° 02053125

KIDDER.COM

This information supplied herein is from sources we deem reliable. It is provided without any representation, warranty, or guarantee, expressed or implied as to its accuracy. Prospective Buyer or Tenant should conduct an independent investigation and verification of all matters deemed to be material, including, but not limited to, statements of income and expenses. Consult your attorney, accountant, or other professional advisor.



11844 - SUITE C



±478 SF

AVAILABLE

CALL

BROKER FOR LEASE RATE

NOW

AVAILABLE

WILL BALLOWE 925.905.1118 | will.ballowe@kidder.com | LIC N° 02053125

KIDDER.COM

This information supplied herein is from sources we deem reliable. It is provided without any representation, warranty, or guarantee, expressed or implied as to its accuracy. Prospective Buyer or Tenant should conduct an independent investigation and verification of all matters deemed to be material, including, but not limited to, statements of income and expenses. Consult your attorney, accountant, or other professional advisor.



