

**±1.83 Acres**  
1955 Ojeman Rd  
Houston, TX



**KRISTEN MCDADE**

Managing Director

T: +1 713 331 1796

kristen.mcdade@cushwake.com

**MATTHEW DAVIS**

Senior Director

T: +1 713 331 1798

matthew.davis@cushwake.com

**MELISSA ELIZONDO**

Brokerage Specialist

T: +1 346 394 4008

melissa.elizondo@cushwake.com





**±1.83 Acres**  
1955 Ojeman Rd  
Houston, TX

Edgewood  
Elementary

Spring Branch Hike & Bike Trail

SBISD Transition  
School

Cedar Brook  
Elementary

Hammerly Blvd

**Subject**

Schwartz  
Park

Landrum  
Middle

The Lion  
Lane School

Ridgecrest  
Elementary

Wirt Rd

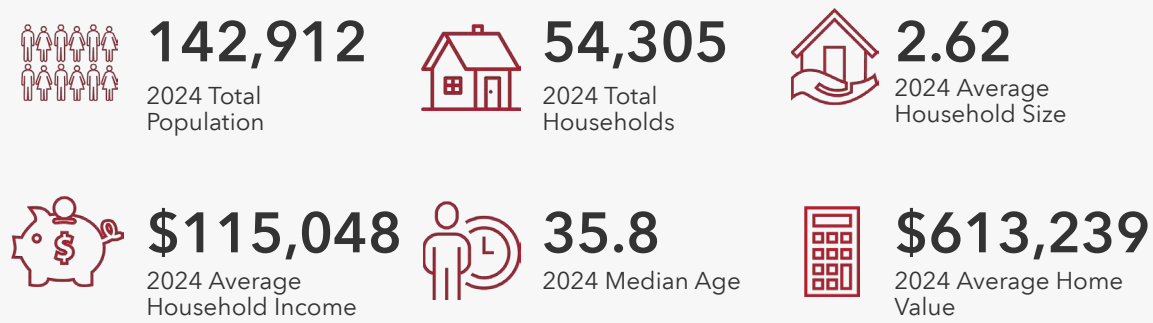
Long Point Rd



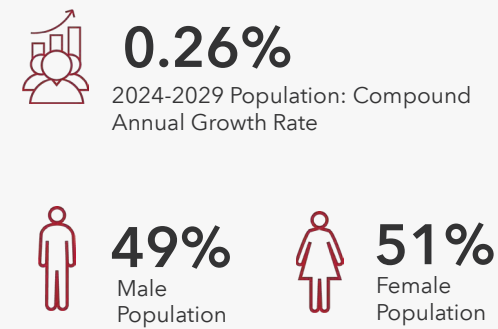
# DEMOGRAPHICS

3 MILES  
////////

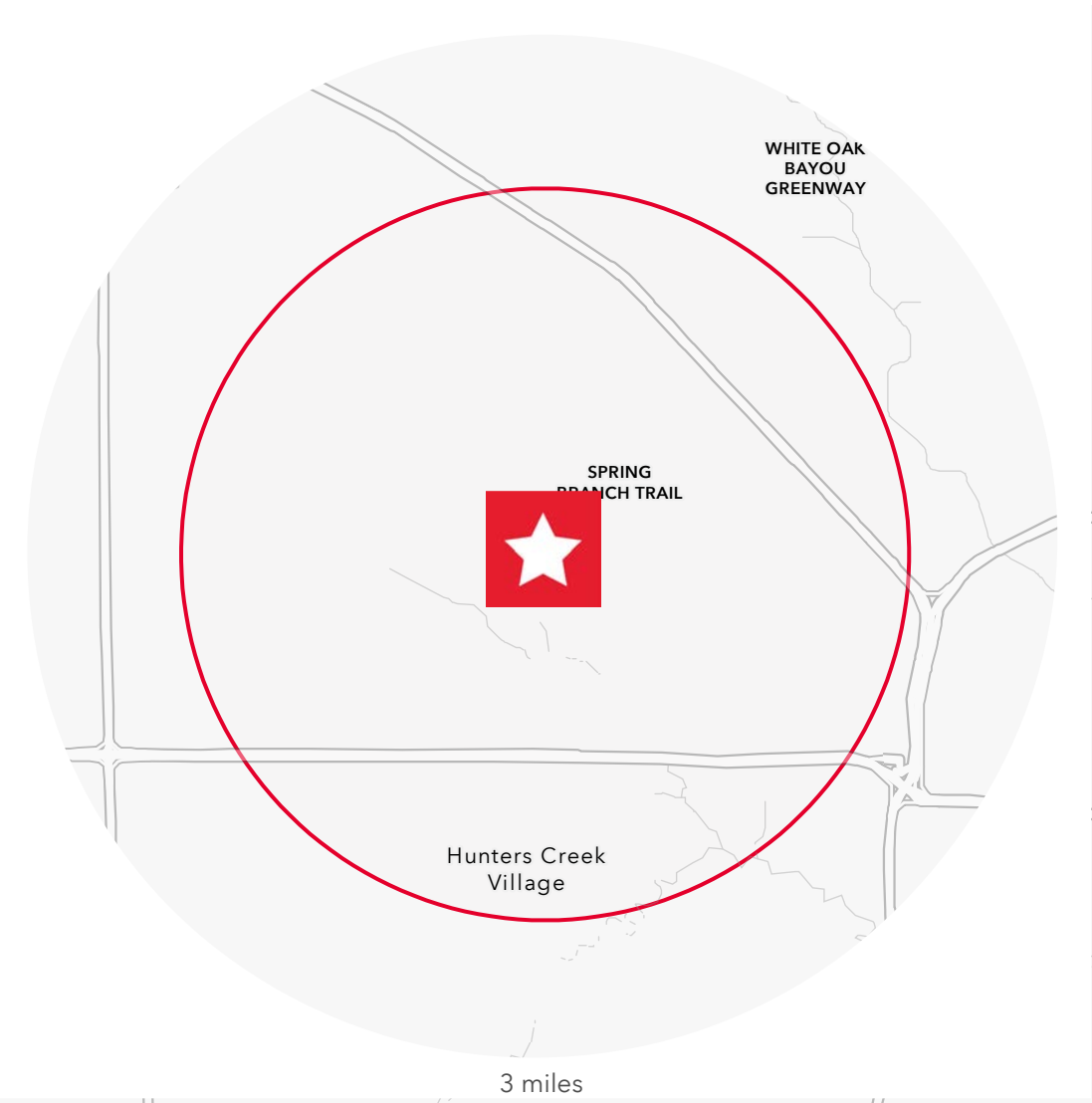
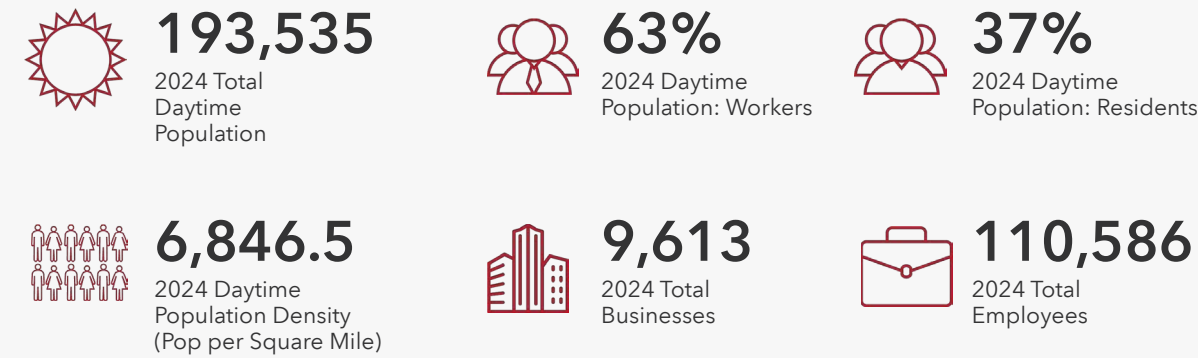
## HOUSEHOLDS



## POPULATION



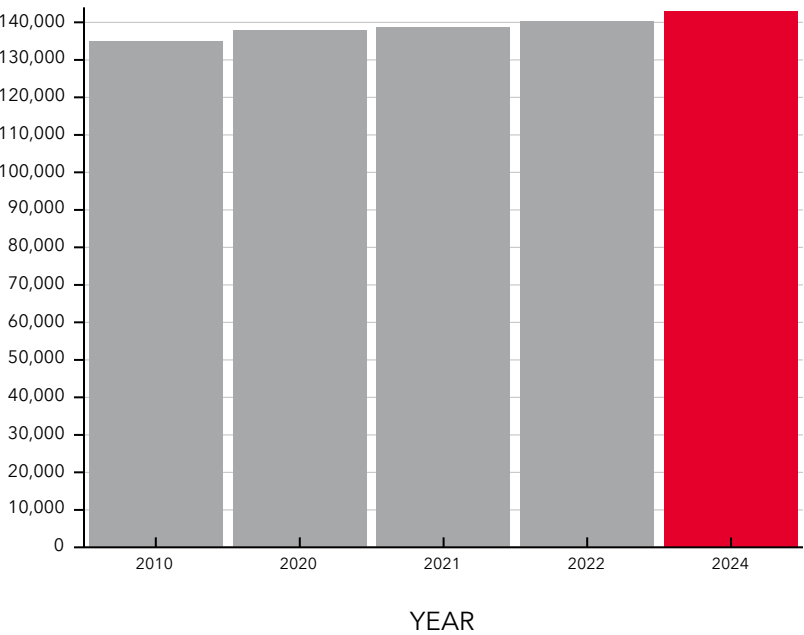
## EMPLOYMENT



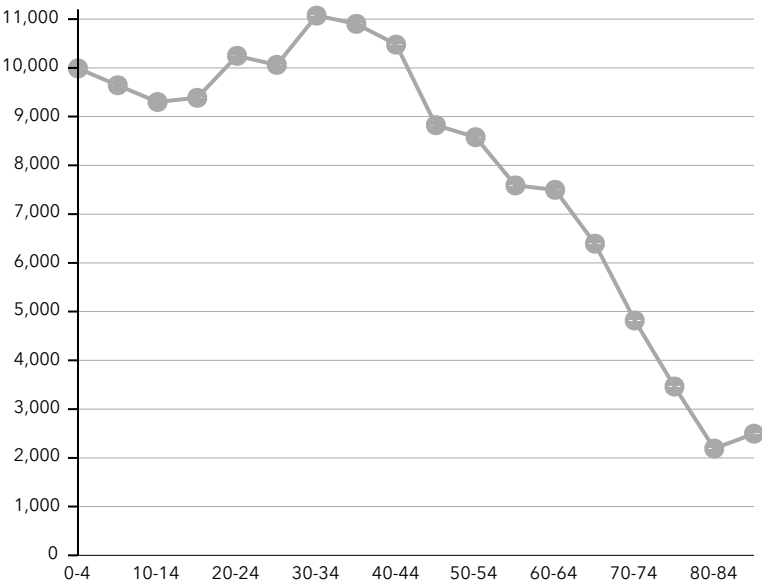
## EDUCATIONAL ATTAINMENT



## POPULATION TIME SERIES 2010-2024



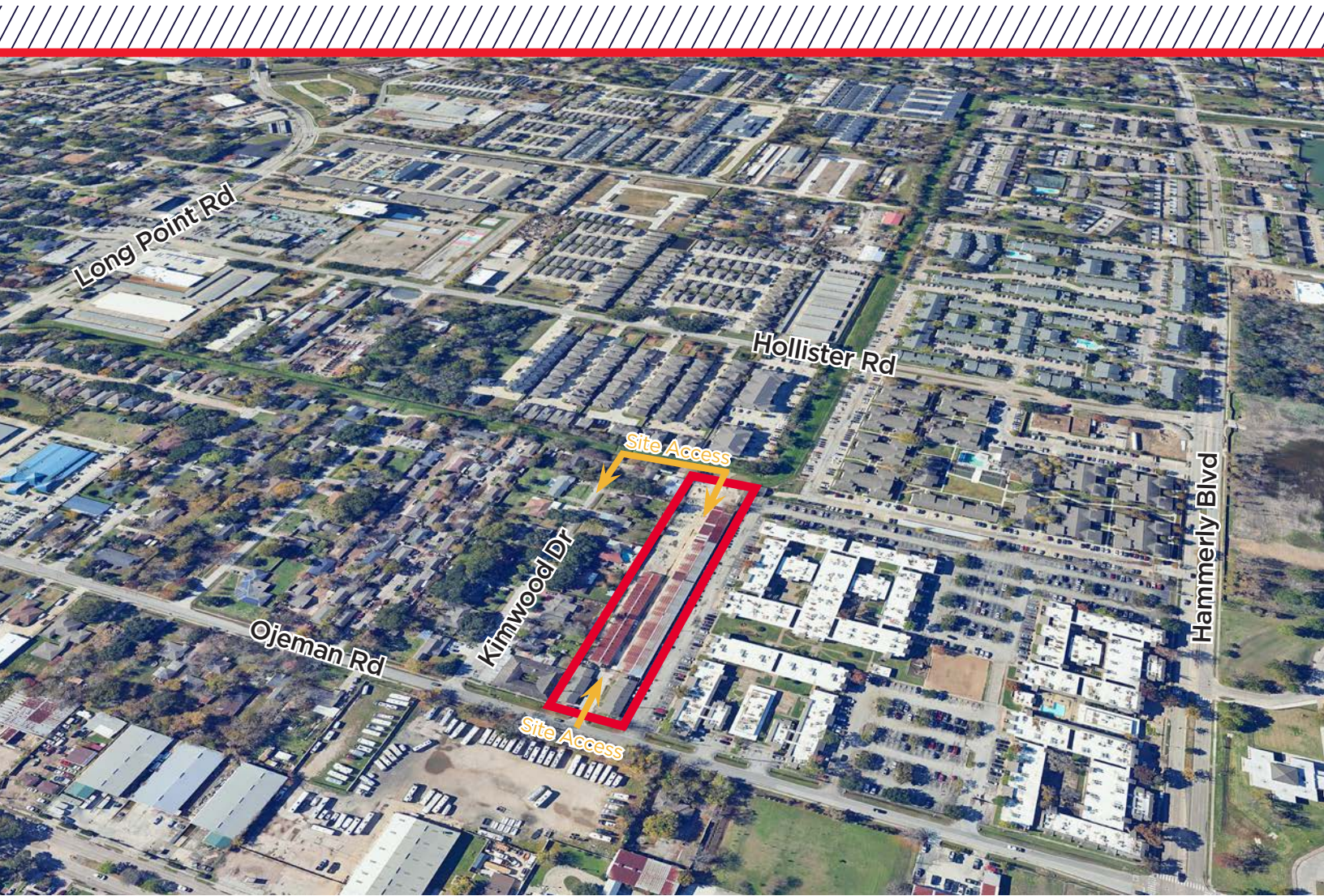
## POPULATION BY AGE GROUP





# ±1.83 Acres

1955 Ojeman Rd  
Houston, TX



±1.83 Acres of land, including 4 apartment units and a self storage facility located at 1955 Ojeman Rd. The site is located in the Spring Branch Independent School District, which is renowned for its commitment to academic excellence and fostering a supportive learning environment. With a diverse student body and innovative programs, the district ensures each student is equipped with the skills and knowledge needed for future success. The dedicated educators and community partnerships create a nurturing atmosphere that encourages both personal and academic growth.

- Unrestricted
- Not located in the floodplain
- Utilities Available
- 141' of frontage on Ojeman
- Contact Broker for Pricing

#### KRISTEN MCDADE

Managing Director

T: +1 713 331 1796

kristen.mcdade@cushwake.com

#### MATTHEW DAVIS

Senior Director

T: +1 713 331 1798

matthew.davis@cushwake.com

#### MELISSA ELIZONDO

Brokerage Specialist

T: +1 346 394 4008

melissa.elizondo@cushwake.com

