



RLC Project No.: 23-386.1
 Figure No.: 1
 Prepared By: MW
 Sketch Date: 3/6/2024
 Map Scale : 1 inch = 4,000 feet

Hwy 280 Tract

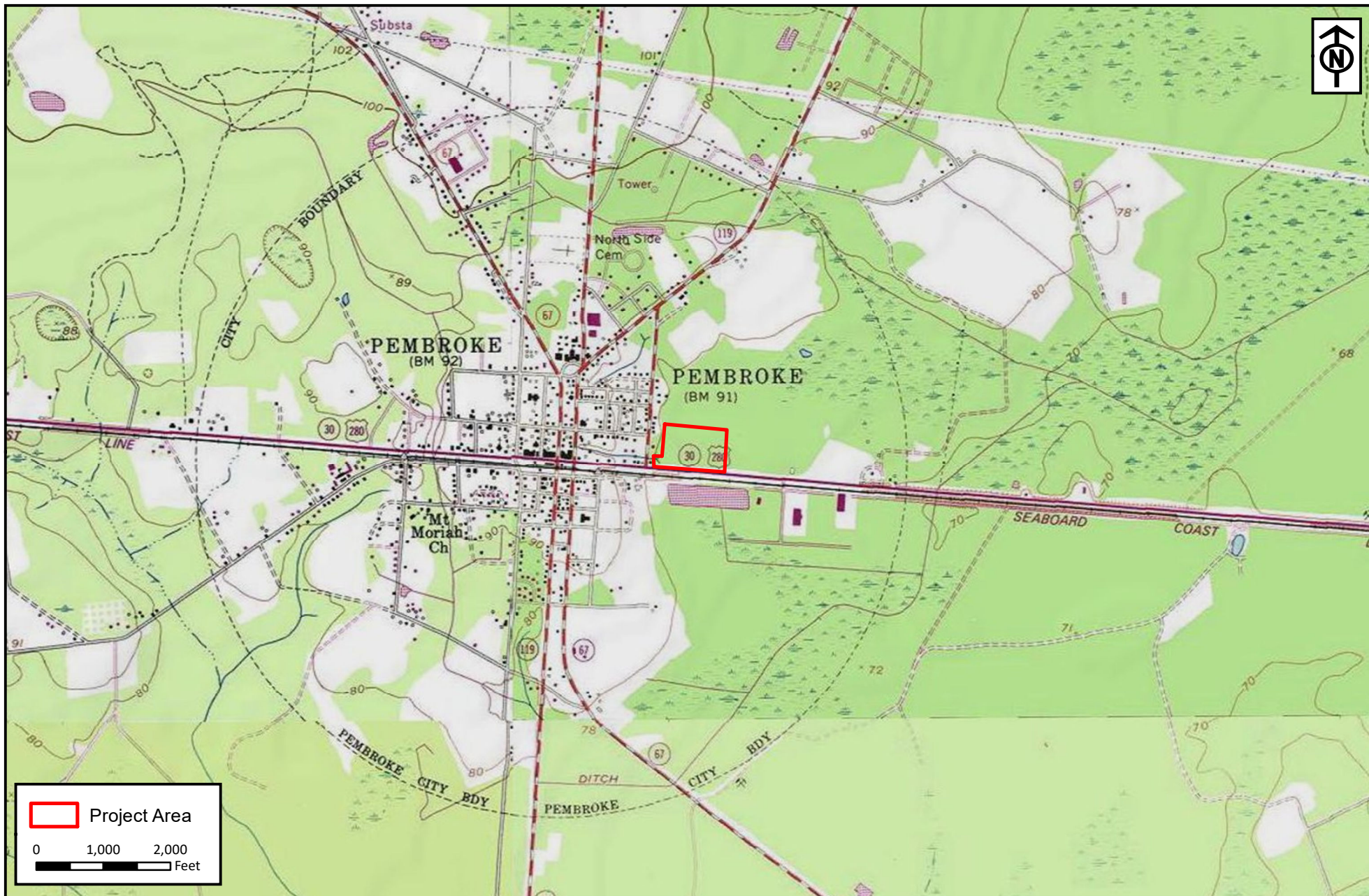
Bryan County, Georgia

Project Location
 Prepared For:
 Bashlor Makhlof Commercial, LLC



RESOURCE+LAND CONSULTANTS

41 Park of Commerce Way, Ste 101
 Savannah, GA 31405
 tel 912.443.5896 fax 912.443.5898



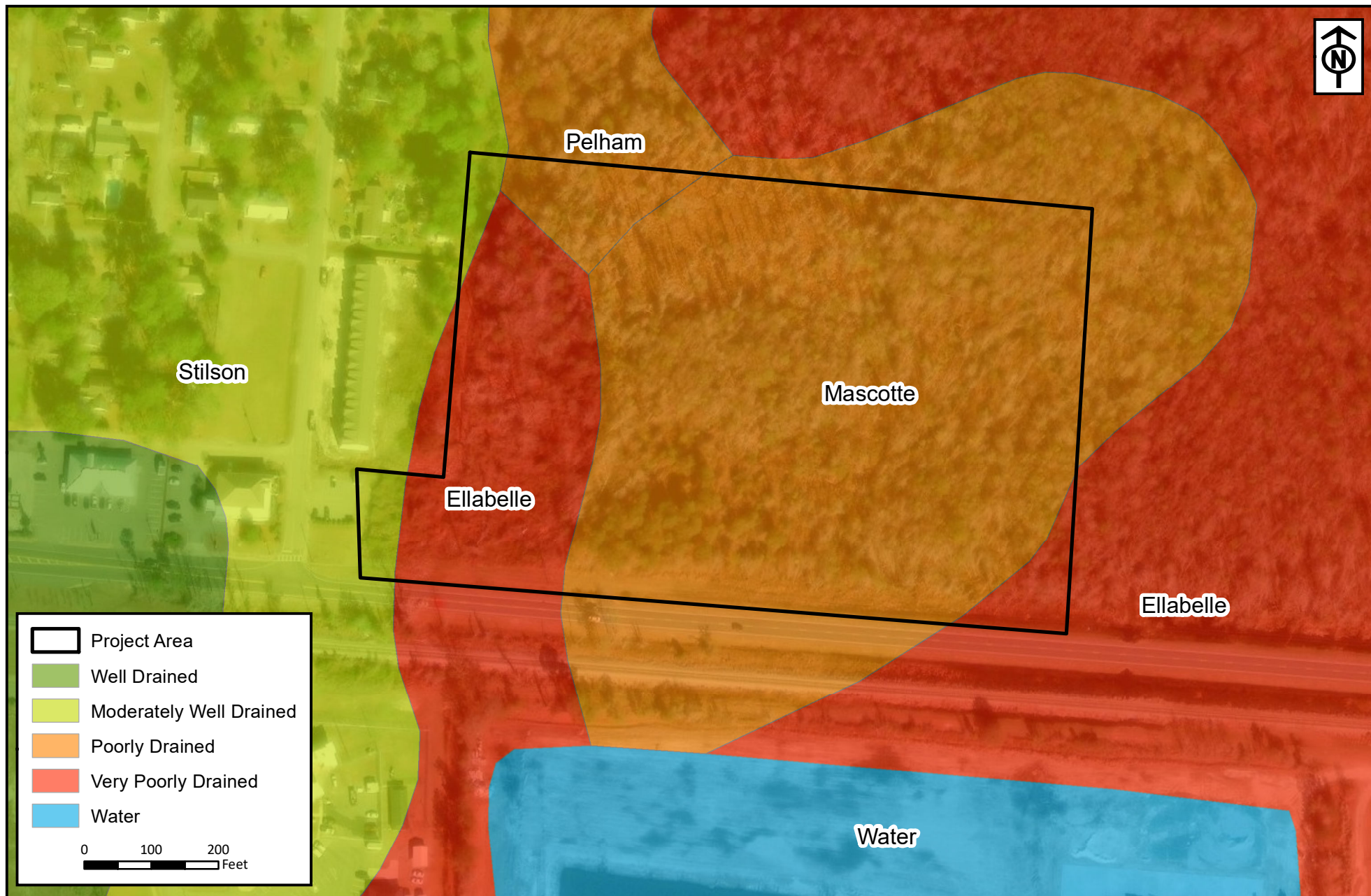
RLC Project No.:	23-386.1
Figure No.:	2
Prepared By:	MW
Sketch Date:	3/6/2024
Map Scale :	1 inch = 2,000 feet

Hwy 280 Tract
Bryan County, Georgia

USGS Topographic Survey
Prepared For:
Bashlor Makhlof Commercial, LLC



RESOURCE+LAND
CONSULTANTS
41 Park of Commerce Way, Ste 101
Savannah, GA 31405
tel 912.443.5896 fax 912.443.5898



RLC Project No.: 23-386.1
 Figure No.: 3
 Prepared By: MW
 Sketch Date: 3/6/2024
 Map Scale : 1 inch = 200 feet

Hwy 280 Tract
 Bryan County, Georgia

NRCS Soil Survey
 Prepared For:
 Bashlor Makhlof Commercial, LLC



RESOURCE+LAND
 CONSULTANTS
 41 Park of Commerce Way, Ste 101
 Savannah, GA 31405
 tel 912.443.5896 fax 912.443.5898



RLC Project No.: 23-386.1
 Figure No.: 4
 Prepared By: MW
 Sketch Date: 3/6/2024
 Map Scale : 1 inch = 200 feet

Hwy 280 Tract
 Bryan County, Georgia

National Wetlands Inventory
 Prepared For:
 Bashlor Makhoulouf Commercial, LLC



RESOURCE+LAND
 CONSULTANTS
 41 Park of Commerce Way, Ste 101
 Savannah, GA 31405
 tel 912.443.5896 fax 912.443.5898



RLC Project No.:	23-386.1
Figure No.:	5
Prepared By:	MW
Sketch Date:	3/6/2024
Map Scale :	1 inch = 200 feet

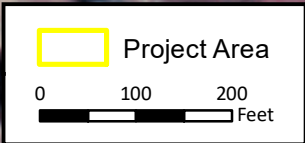
Hwy 280 Tract
Bryan County, Georgia

Ortho Aerial
Prepared For:
Bashlor Makhoul Commercial, LLC



**RESOURCE+LAND
CONSULTANTS**

41 Park of Commerce Way, Ste 101
Savannah, GA 31405
tel 912.443.5896 fax 912.443.5898



RLC Project No.:	23-386.1
Figure No.:	6
Prepared By:	MW
Sketch Date:	3/6/2024
Map Scale :	1 inch = 200 feet

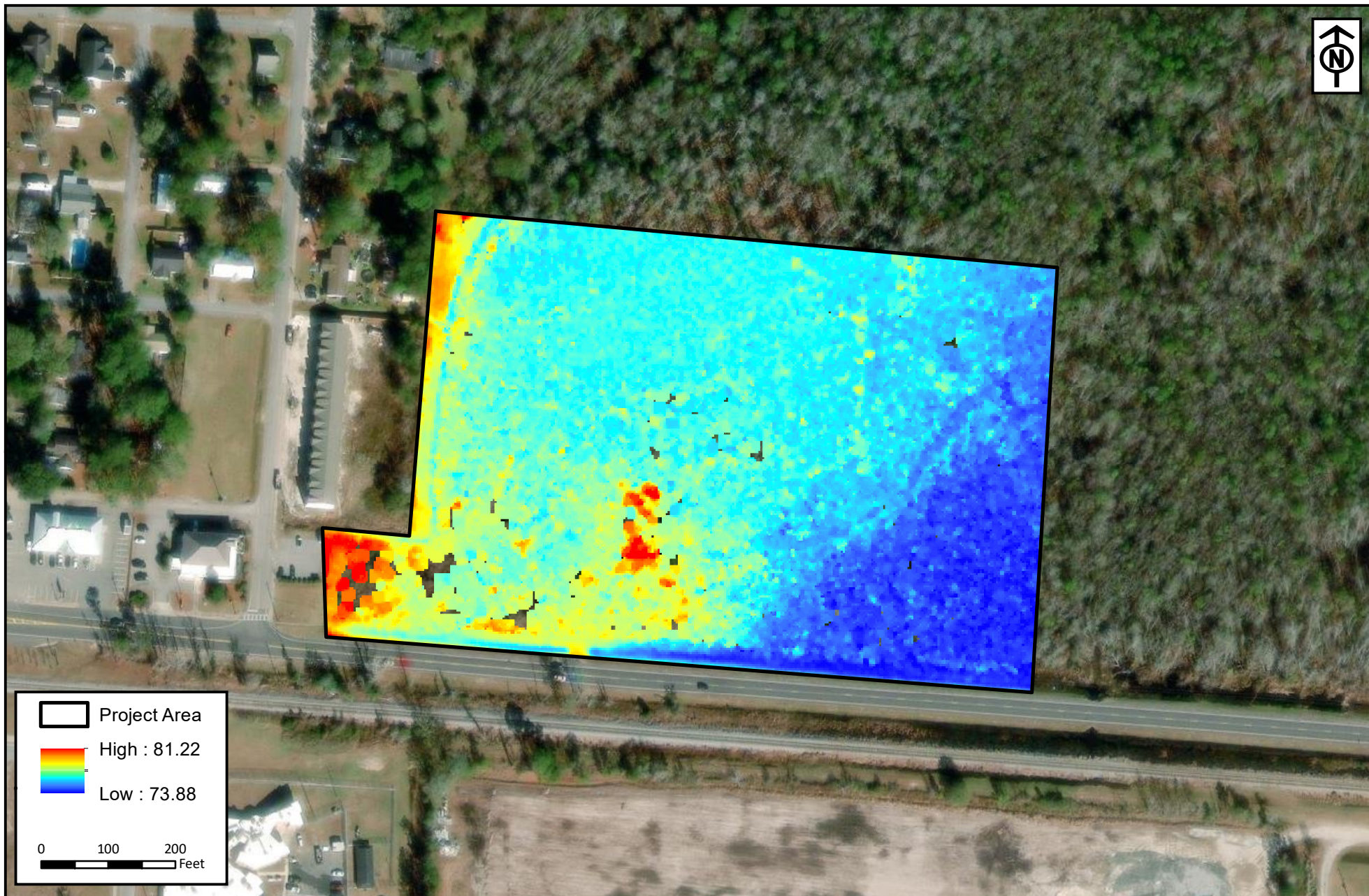
Hwy 280 Tract
Bryan County, Georgia

1999 Color-infrared Imagery
Prepared For:
Bashlor Makhoul Commercial, LLC



RESOURCE+LAND
CONSULTANTS

41 Park of Commerce Way, Ste 101
Savannah, GA 31405
tel 912.443.5896 fax 912.443.5898



RLC Project No.: 23-386.1
Figure No.: 7
Prepared By: MW
Sketch Date: 3/6/2024
Map Scale : 1 inch = 200 feet

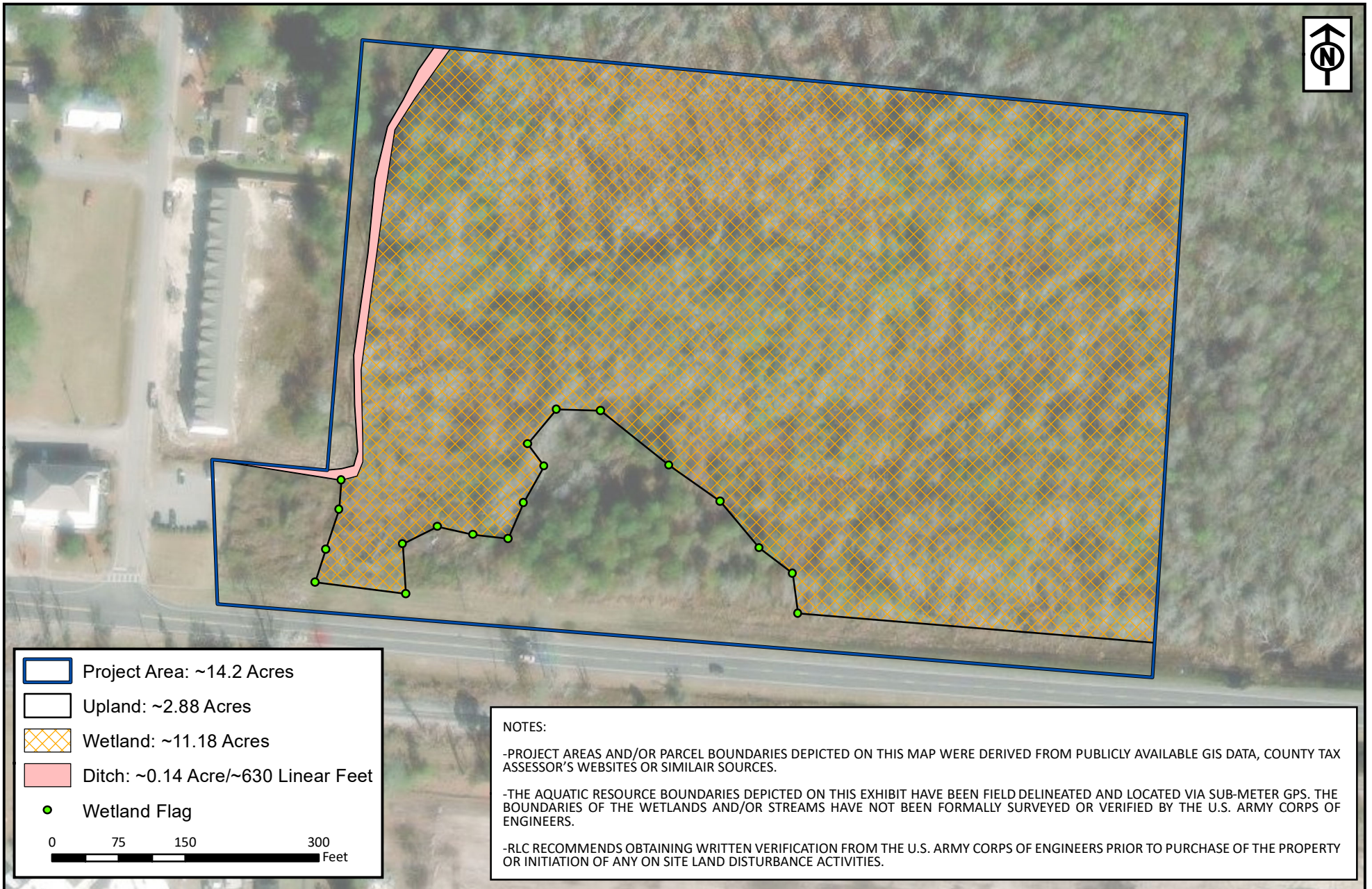
Hwy 280 Tract
Bryan County, Georgia

NOAA Topographic Lidar
Prepared For:
Bashlor Makhoul Commercial, LLC



RESOURCE+LAND
CONSULTANTS

41 Park of Commerce Way, Ste 101
Savannah, GA 31405
tel 912.443.5896 fax 912.443.5898



- Project Area: ~14.2 Acres
 - Upland: ~2.88 Acres
 - Wetland: ~11.18 Acres
 - Ditch: ~0.14 Acre/~630 Linear Feet
 - Wetland Flag
- 0 75 150 300 Feet

NOTES:

-PROJECT AREAS AND/OR PARCEL BOUNDARIES DEPICTED ON THIS MAP WERE DERIVED FROM PUBLICLY AVAILABLE GIS DATA, COUNTY TAX ASSESSOR'S WEBSITES OR SIMILAIR SOURCES.

-THE AQUATIC RESOURCE BOUNDARIES DEPICTED ON THIS EXHIBIT HAVE BEEN FIELD DELINEATED AND LOCATED VIA SUB-METER GPS. THE BOUNDARIES OF THE WETLANDS AND/OR STREAMS HAVE NOT BEEN FORMALLY SURVEYED OR VERIFIED BY THE U.S. ARMY CORPS OF ENGINEERS.

-RLC RECOMMENDS OBTAINING WRITTEN VERIFICATION FROM THE U.S. ARMY CORPS OF ENGINEERS PRIOR TO PURCHASE OF THE PROPERTY OR INITIATION OF ANY ON SITE LAND DISTURBANCE ACTIVITIES.

RLC Project No.: 23-386.1
Figure No.: 8
Prepared By: MW
Sketch Date: 3/6/2024
Map Scale : 1 inch = 150 feet

Highway 280 Tract
Bryan County, Georgia

**Aquatic Resource
Delineation GPS Exhibit**
Prepared For:
Bashlor Makhlof Commercial, LLC



**RESOURCE+LAND
CONSULTANTS**

41 Park of Commerce Way, Ste 101
Savannah, GA 31405
tel 912.443.5896 fax 912.443.5898



RLC Project No.: 23-368.1
 Figure No.: 9
 Prepared By: MW
 Sketch Date: 3/4/2024
 Map Scale : 1 inch = 150 feet

Highway 280 Tract
 Bryan County, Georgia

Potential Wetland Impact Exhibit
 Prepared For:
 Bashlor Makhlof Commercial, LLC



RESOURCE+LAND
 CONSULTANTS
 41 Park of Commerce Way, Ste 101
 Savannah, GA 31405
 tel 912.443.5896 fax 912.443.5898