

**2 MONTHS FREE
ON 3-YEAR TERM**



**Institutionally Owned & Managed / Flexibility to Expand
Convenient Access to the 101 Freeway**



1,194 - 2,936 SF AVAILABLE FOR LEASE

HIGHLY SOUGHT AFTER TARZANA INDUSTRIAL UNITS

18314 - 18324 Oxnard Street | Tarzana, CA | Los Angeles County



**Rexford
Industrial**

NAI Capital
COMMERCIAL REAL ESTATE SERVICES, WORLDWIDE

Building Features



Property Highlights

- Clear Height: 16'
- 1 Ground Level Door
- 10x14 Rollup Door
- Polished Concrete Floors
- Skylights
- 1 ADA Restroom
- Excellent Southern Valley Location
- Close to the 101 Freeway
- New Insulation
- Led Motion Sensor Lights



Building Features



18314 Oxnard St. Unit 4

- Warehouse SF - 2,686 SF
- Office SF - 246 SF
- Lease Rate: \$1.89 Modified Gross
- Available: 6/1/2025

18314 Oxnard St. Unit 6

- Warehouse SF - 2,441 SF
- Office SF - 445 SF
- Lease Rate: \$1.89 Modified Gross
- Available Now

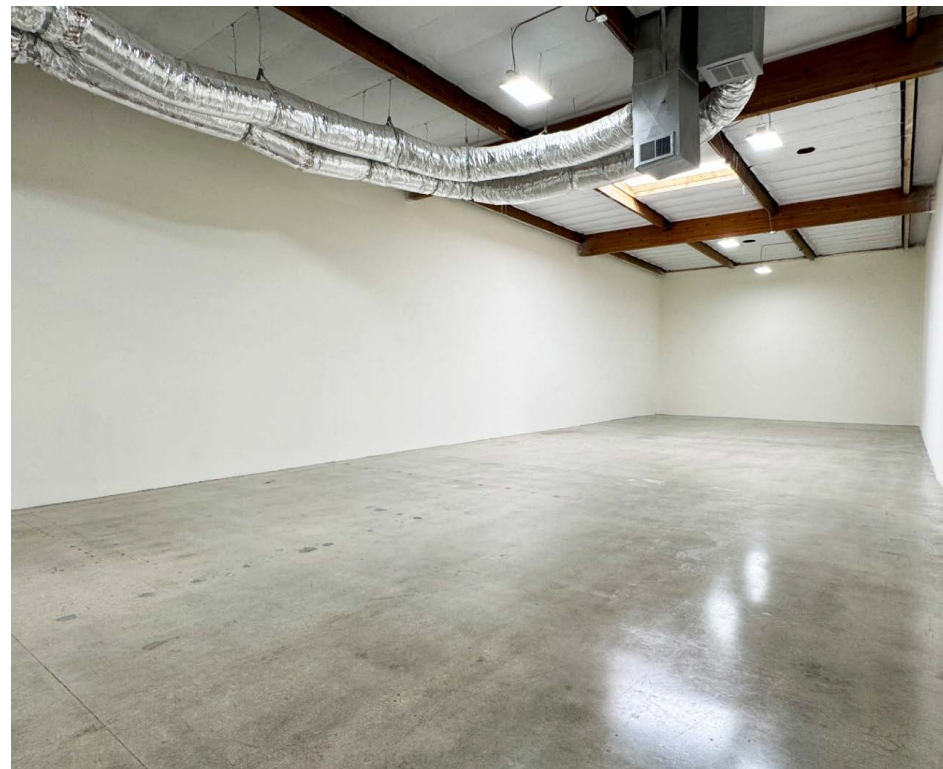
18318 Oxnard St. Unit 4

- Warehouse SF - 1,194 SF
- Office SF - 0 SF
- Lease Rate: \$1.99 Modified Gross
- Available Now

18324 Oxnard St. Unit 4

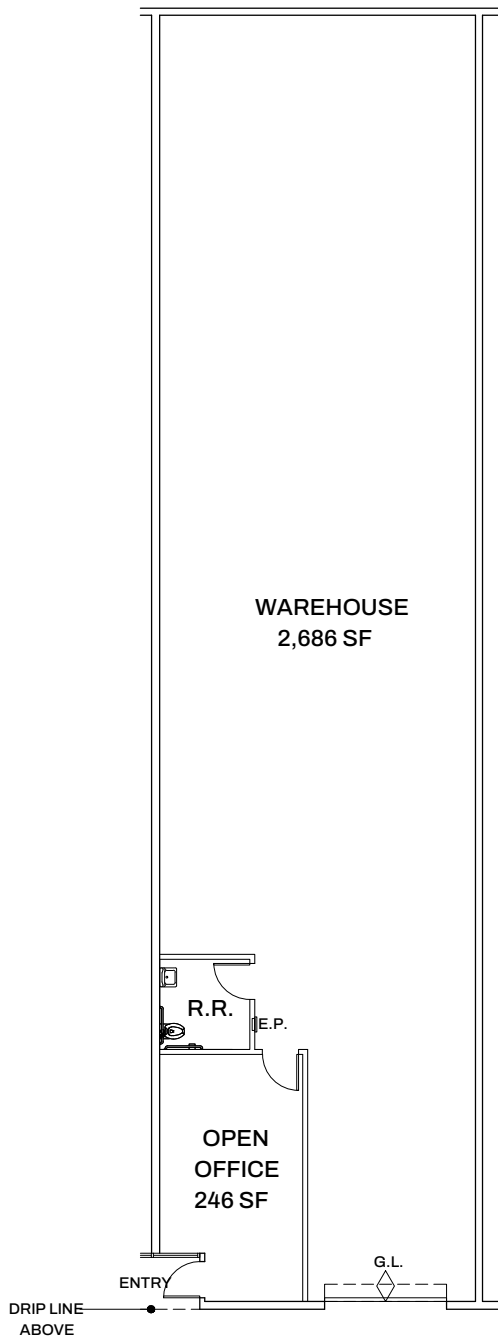
- Warehouse SF - 2,667 SF
- Office SF - 265 SF
- Lease Rate: \$1.89 Modified Gross
- Available Now

Property Photos



Property Photos



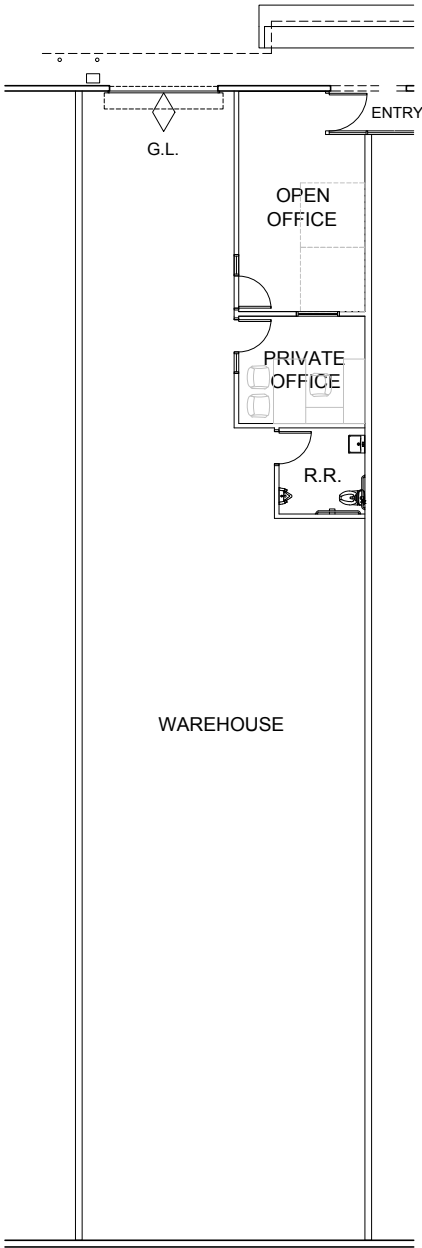


WAREHOUSE
2,686 SF

OFFICE
246 SF

TOTAL
2,936 SF

Plan layout subject to field conditions and may differ from plan as shown. All information presented on this drawing is presumed to be accurate, however tenant should verify pertinent information prior to committing to a lease. Any furniture or appliances shown on plan are for concept only and will be tenant provided.

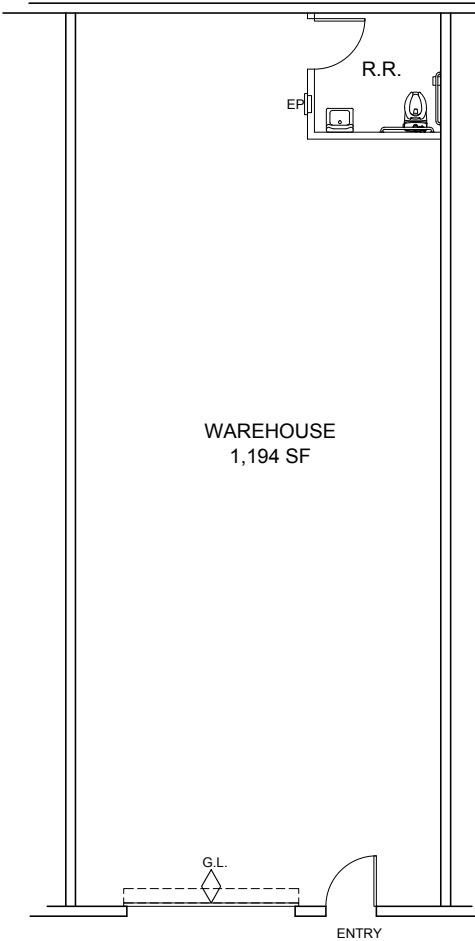


WAREHOUSE
2,441 SF

OFFICE
445 SF

TOTAL
2,886 SF

Plan layout subject to field conditions and may differ from plan as shown. All information presented on this drawing is presumed to be accurate, however tenant should verify pertinent information prior to committing to a lease. Any furniture or appliances shown on plan are for concept only and will be tenant provided.

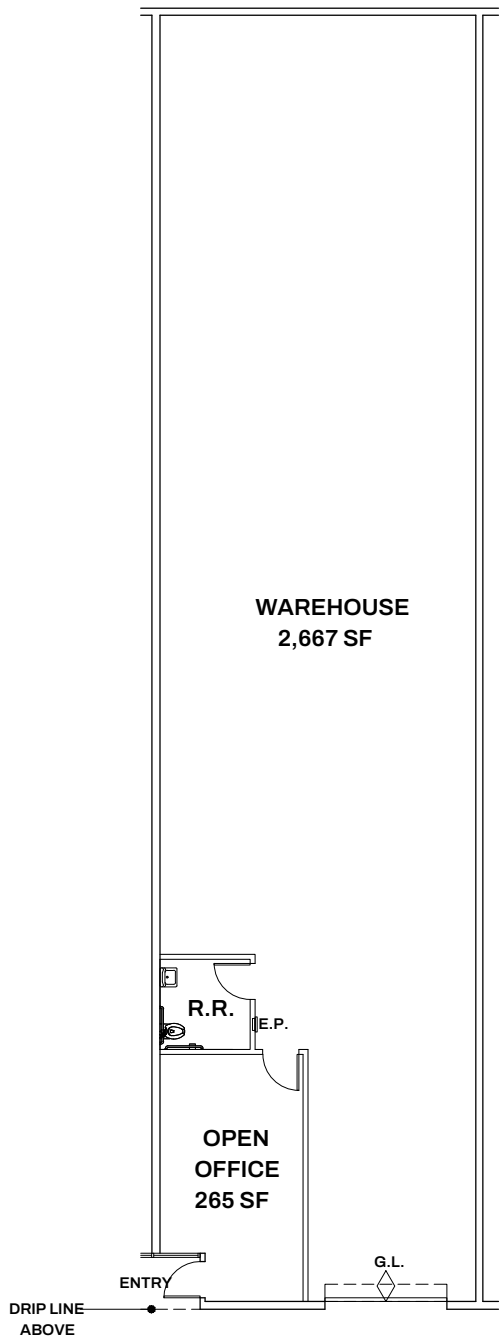


WAREHOUSE
1,194 SF

OFFICE
0 SF

TOTAL
1,194 SF

Plan layout subject to field conditions and may differ from plan as shown. All information presented on this drawing is presumed to be accurate, however tenant should verify pertinent information prior to committing to a lease. Any furniture or appliances shown on plan are for concept only and will be tenant provided.



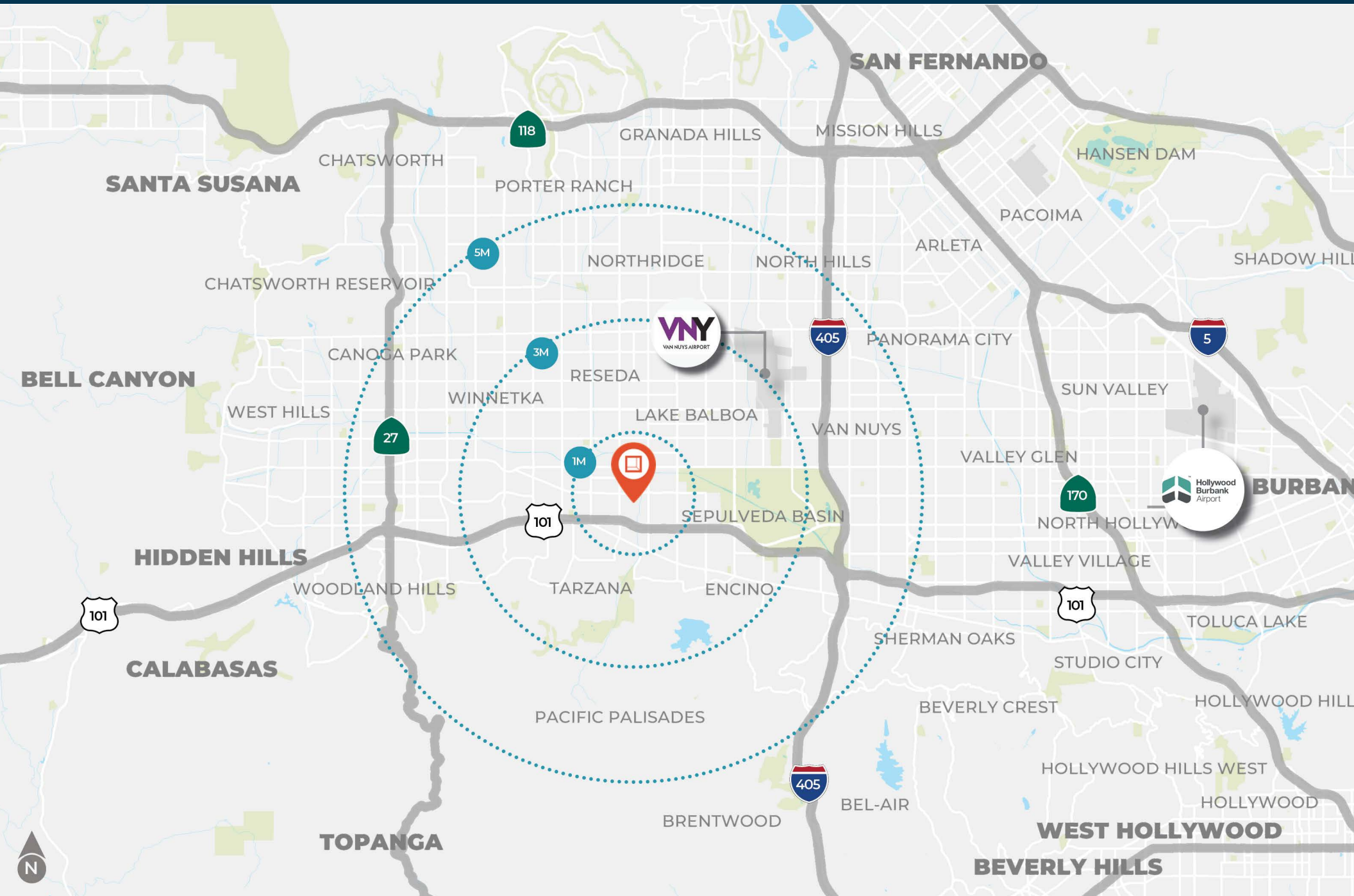
WAREHOUSE
2,667 SF

OFFICE
265 SF

TOTAL
2,932 SF

Plan layout subject to field conditions and may differ from plan as shown. All information presented on this drawing is presumed to be accurate, however tenant should verify pertinent information prior to committing to a lease. Any furniture or appliances shown on plan are for concept only and will be tenant provided.

Location



Amenities Map





**Rexford
Industrial**

Leasing Contact

Matt Ehrlich

Executive Vice President

818-933-2364

mehrlich@naicapital.com

Cal DRE Lic #01936772



15821 Ventura Boulevard
Suite 320
Encino, California 91436

No warranty, express or implied, is made as to the accuracy of the information contained herein. This information is submitted subject to errors, omissions, change of price, rental or other conditions, withdrawal without notice, and is subject to any special listing conditions imposed by our principals. Cooperating brokers, buyers, tenants and other parties who receive this document should not rely on it, but should use it as a starting point of analysis, and should independently confirm the accuracy of the information contained herein through a due diligence review of the books, records, files and documents that constitute reliable sources of the information described herein. NAI Capital CA DRE #02130474