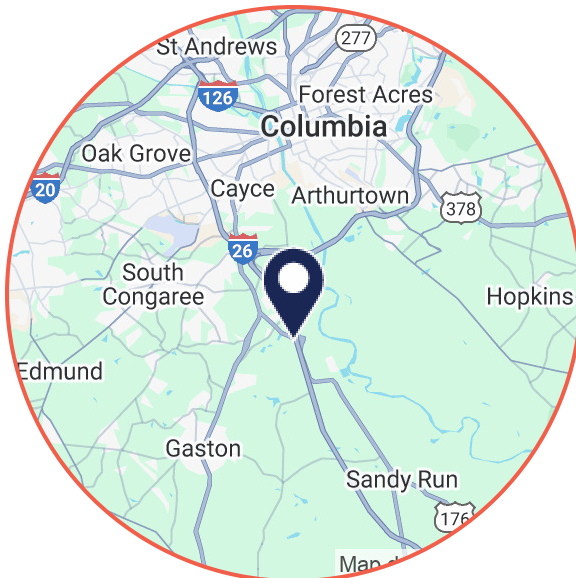
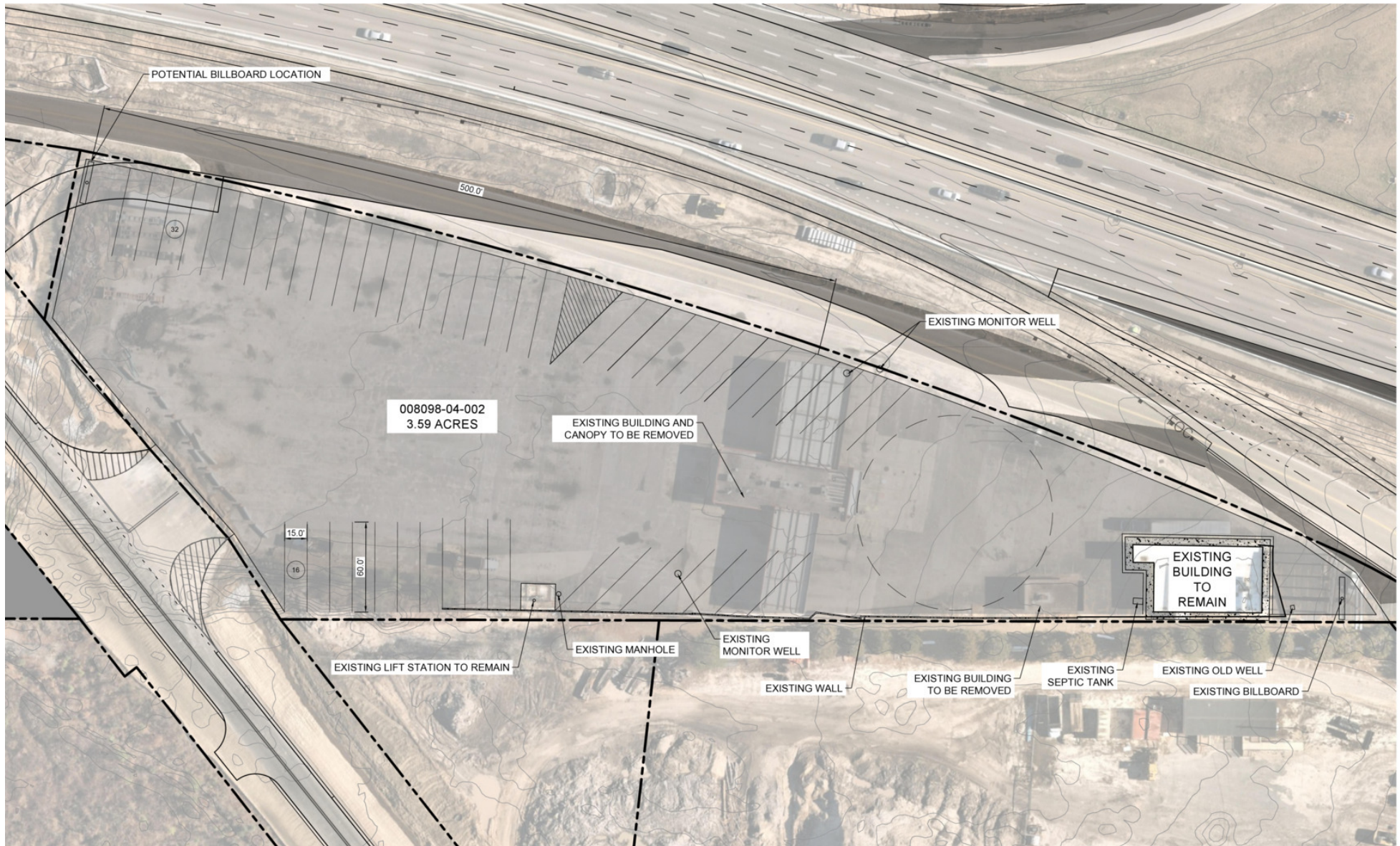
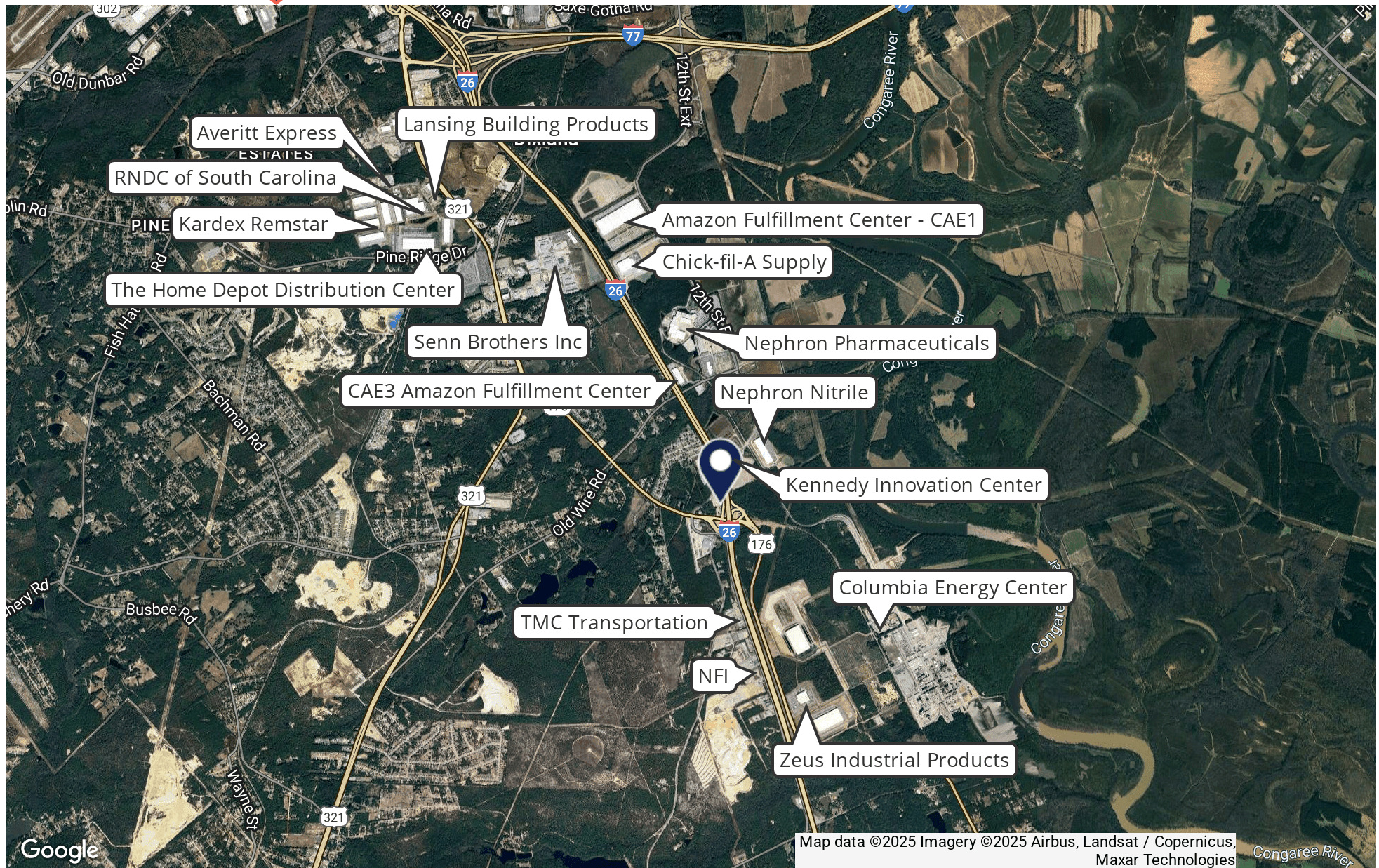


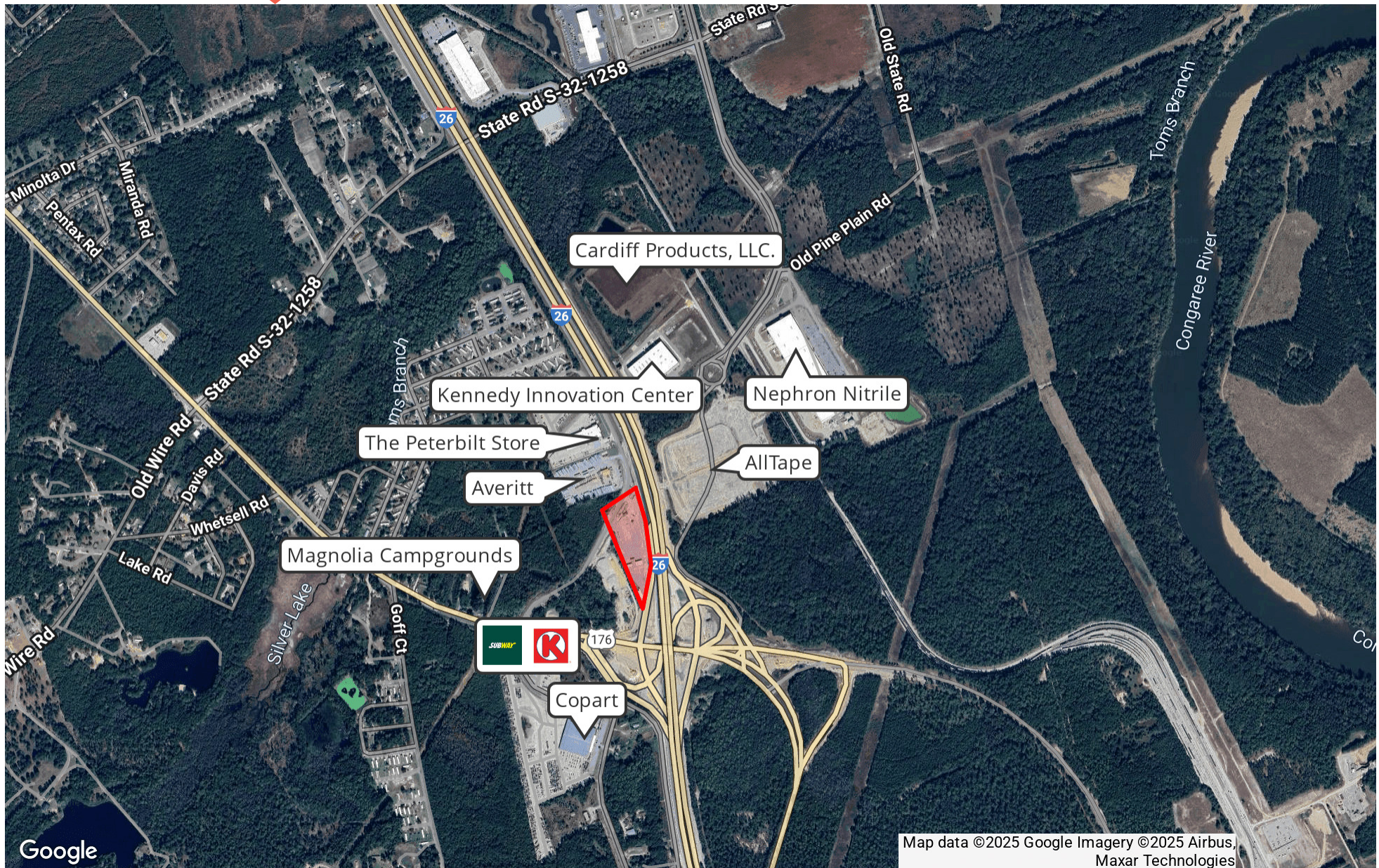
125 Rolling Meadows Lane West Columbia, SC 29172

- 3.59 acre development site that was formerly a Pitt Stop Convenience Store located directly on I-26 at the Hwy 21 exit.
- Lexington County Zoning-ID.
- Located within a 3 mile radius of several largest manufacturing and distribution facilities in the Midlands.
- The former C-store facilities have all been demolished and there is an existing 3,500 SF retail shell building that could be repurposed for an end user for back office and operations.
- The site can accommodate up to 49 tractor trailers with multiple points of ingress/egress.









Demographics Map & Report

125 Rolling Meadows Lane

POPULATION	1 MILE	5 MILES	10 MILES
Total Population	1,051	16,768	209,500
Average Age	37	39	39
Average Age (Male)	36	39	38
Average Age (Female)	38	40	39

HOUSEHOLDS & INCOME	1 MILE	5 MILES	10 MILES
Total Households	397	6,717	89,143
# of Persons per HH	2.6	2.5	2.4
Average HH Income	\$60,124	\$68,533	\$77,335
Average House Value	\$127,301	\$181,404	\$265,575

Demographics data derived from AlphaMap

