

# MOOSE CLUB RD

## WAKEFIELD GATEWAY – DEVELOPMENT LAND



MOOSE CLUB RD, STATESVILLE, IREDELL COUNTY, NC 28677



The Wakefield Gateway outparcel on Moose Club Road represents a premier 4.5-acre development site in Statesville, NC. Offered as a ground lease or build-to-suit, this property delivers flexibility for end-users while ensuring long-term value creation. The site is situated within Wakefield, a growing corridor with strong visibility and access to regional transportation routes.

The parcel is positioned to serve the expanding residential base with over 3,200 homes within 1 mile and benefit from steady commuter traffic. Its size and location support a range of commercial uses, from educational facilities to retail banking and fitness centers, aligning with demand drivers in the market.

### PROPERTY DETAILS

Address	Moose Club Rd, Statesville, NC 28677   PIN 4732-85-5881
Site Size	Approx. 4.5 acres
Ownership	Wakefield Gateway
Zoning	CZ-MU (Commercial, Office, Flex)
Utilities	Public water/sewer
Access	300' frontage on Moose Club Rd and Wakefield Village
Suggested Uses	Daycare, school, retail, bank, fitness center

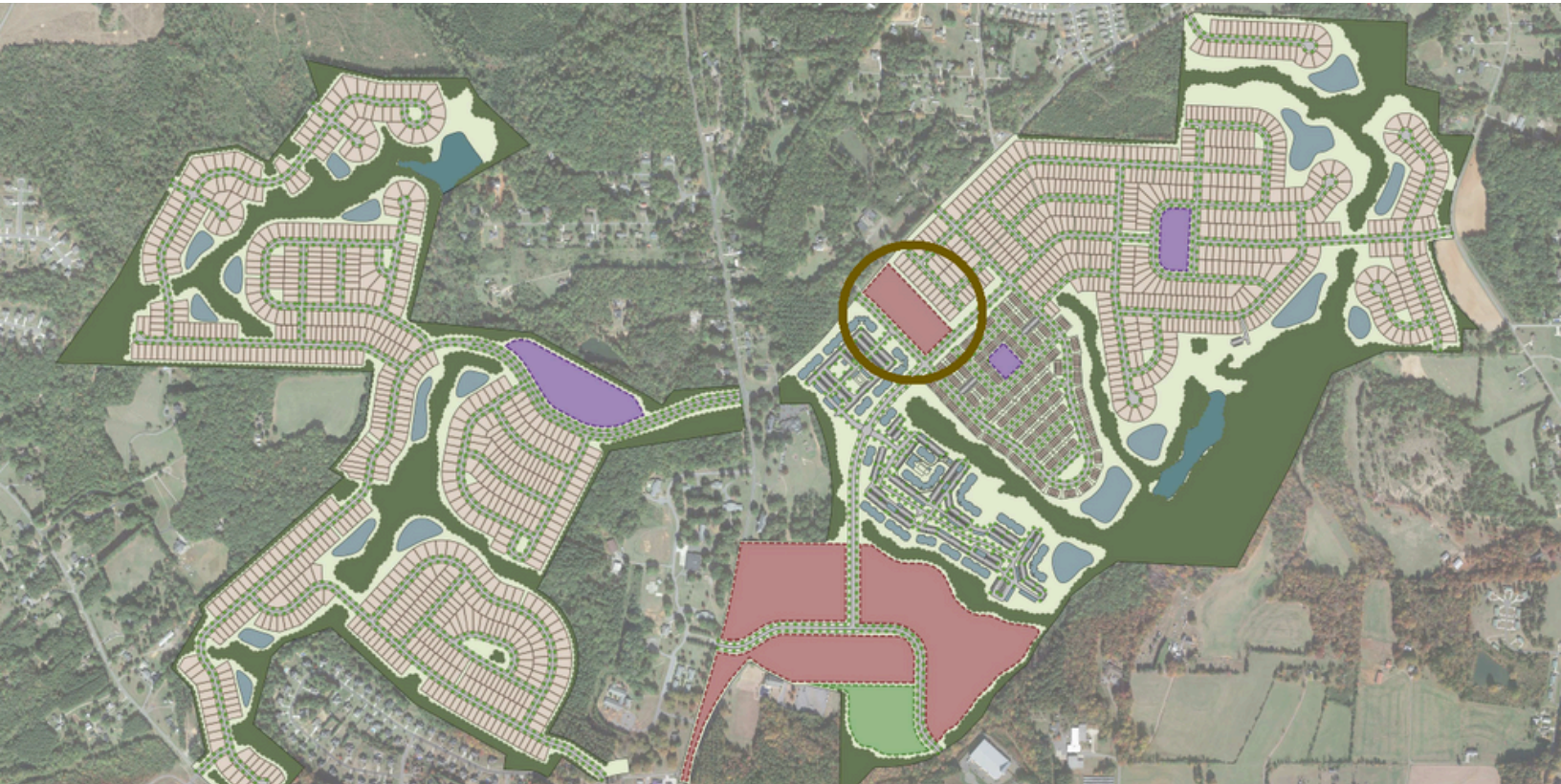
FOR MORE  
INFORMATION CONTACT:

TODD AKERS  
(704) 898-1055

ToddAkers@KWCommercial.com  
www.toddakers.com

Each Office Is Independently  
Owned and Operated.





All information is believed reliable but not guaranteed; parties should conduct their own due diligence as neither Todd Akers nor affiliates make any warranties or representations.

FOR MORE  
INFORMATION CONTACT:

TODD AKERS  
(704) 898-1055

ToddAkers@KWCommercial.com  
www.toddakers.com

Each Office Is Independently  
Owned and Operated.

