

OFFICE SPACE FOR LEASE

25,000± s.f.

BUILDING
SIGNAGE
AVAILABLE



7.0/1,000
PARKING
RATIO

Building H (formerly 700 Southpark Center)

8325 South Park Circle
Orlando, FL 32819





BUILDING H

Building H (formerly 700 SouthPark Center) is located in Orlando's premier office park and home to many leading national and international companies.



This class A office building boasts available spaces from 5,210 to 43,710 SF with ample parking at 7.0/1,000.



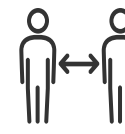
Health & Wellness Prioritized:



BOUTIQUE
A smaller building community allows tenants to spend less time getting to their desks



CONSISTENT SANITATION
Daily & overnight high level cleaning



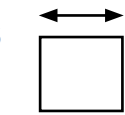
SOCIAL DISTANCING
Signage & floor markers are used to enforce social distancing in the building to promote health & safety



BREATHE CLEAN AIR
Each floor has a separate HVAC unit



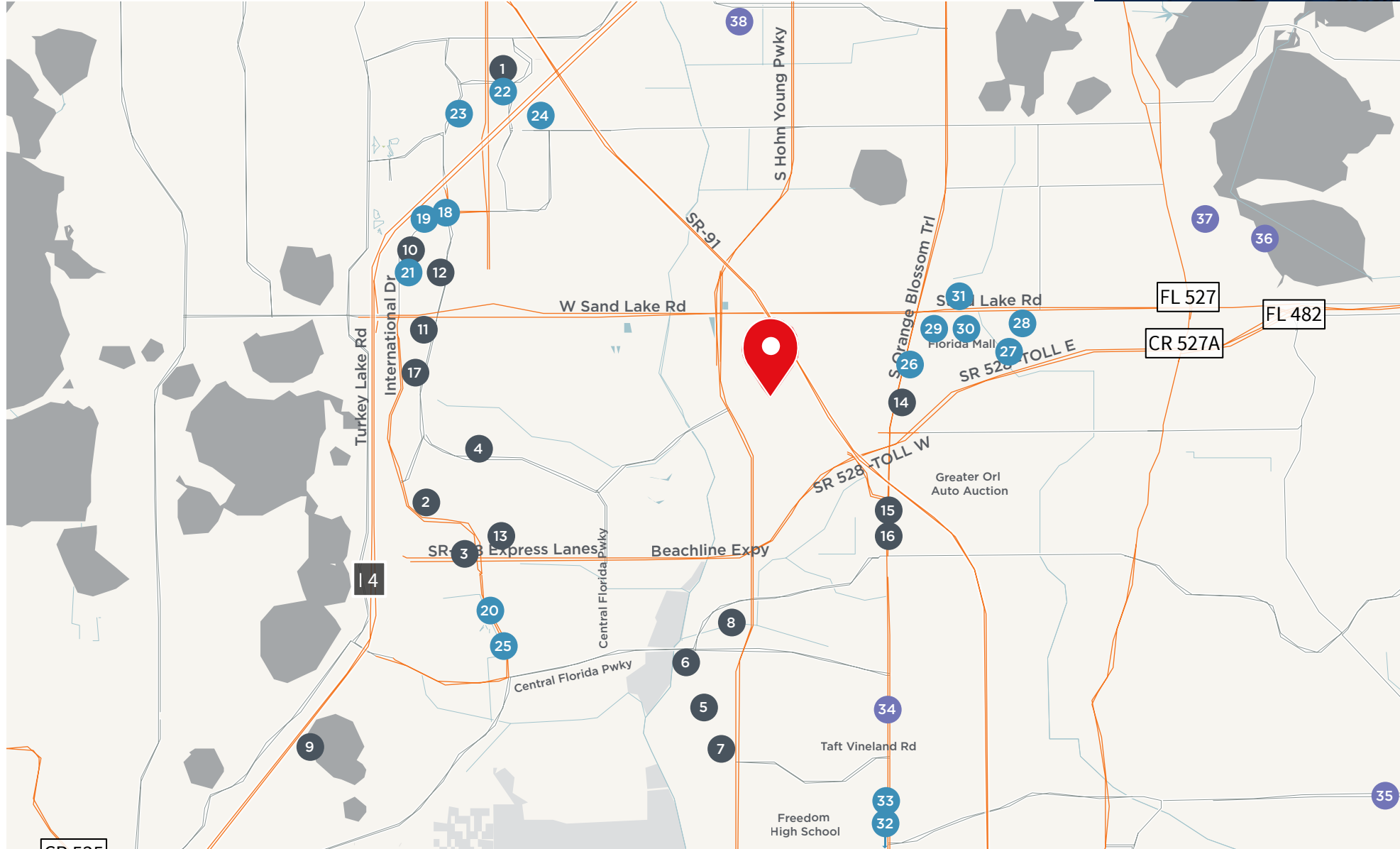
EMBRACE THE STAIRS
Stairwells are fully accessible for tenants' daily usage



START FRESH
A full floor of 20,000 s.f. of shell condition space with high ceilings is perfect for a fresh start



Area Amenities



The convenient location allows for easy access to all of Metro Orlando.



Major thoroughfares such as Florida's Turnpike, Beachline (SR 528), the GreeneWay (SR 417) and I-4 are only minutes away.



Hotels

1. Double Tree
2. Hyatt Regency-Orlando
3. Days Inn-Convention Ctr
4. Westin-Orlando Universal Blvd
5. J W Marriott
6. Ritz Carlton-Grande Lakes
7. Marriott-Lakeshore Reserve
8. Courtyard
9. Marriott-Grande Vista
10. Hampton Inn-Suites Orlando
11. Wyndham
12. Sheraton-Broadway Plantation
13. Hilton-Orlando
14. Hampton Inn-Florida Mall
15. Days Inn-Days Lodge-Florida
16. Days Inn-Airport
17. Residence Inn-Convention Ctr

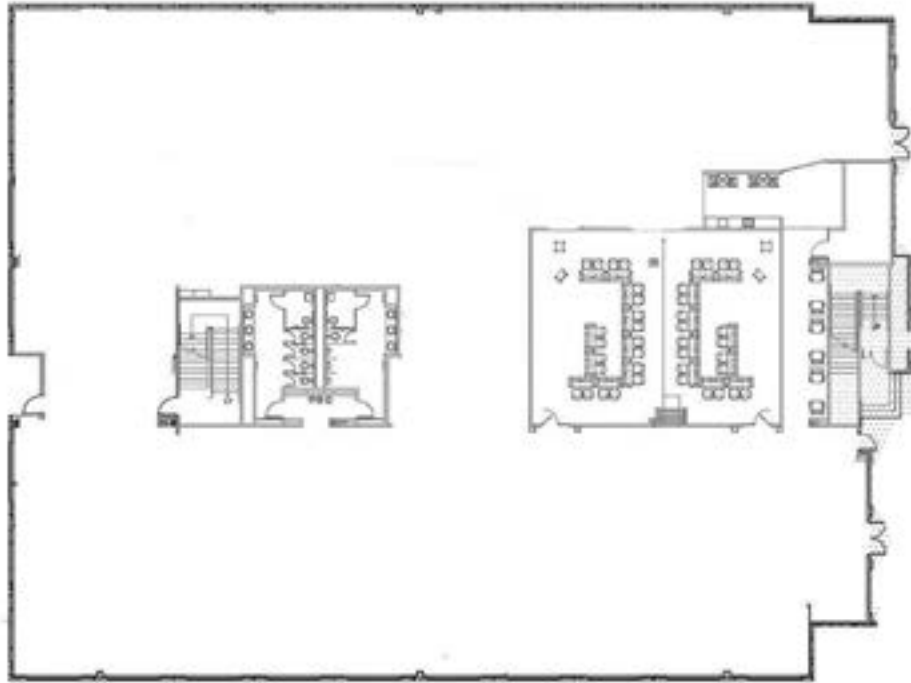
Restaurants

18. Red Lobster
19. KFC
20. Starbucks
21. Buffalo Wild Wings Grill & Bar
22. Tgi Friday's
23. Moe's Southwest Grill
24. Panera Bread
25. Mellow Mushroom
26. Miller's Ale House-FI Mall
27. Buca Di Beppo
28. Chipotle Mexican Grill
29. Outback Steakhouse
30. Chili's Grill & Bar
31. Olive Garden Italian Rstrnt
32. Ruby Tuesday
33. Chick-Fil-A

Shopping

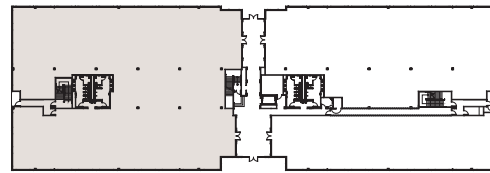
34. Costco
35. Publix Super Market
36. Staples
37. Walmart Supercenter
38. Target

Suite 100: 20,740 +/- s.f.



Highlights

- Double door entry from building lobby
- Three sides of glass
- Ample natural light
- Restrooms interior to space



[Click here to take a VIRTUAL TOUR of this space](#)

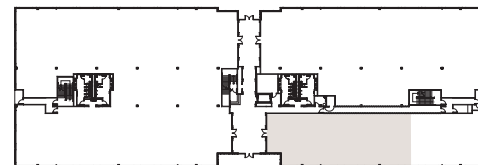


Suite 150: 5,210 +/- s.f.

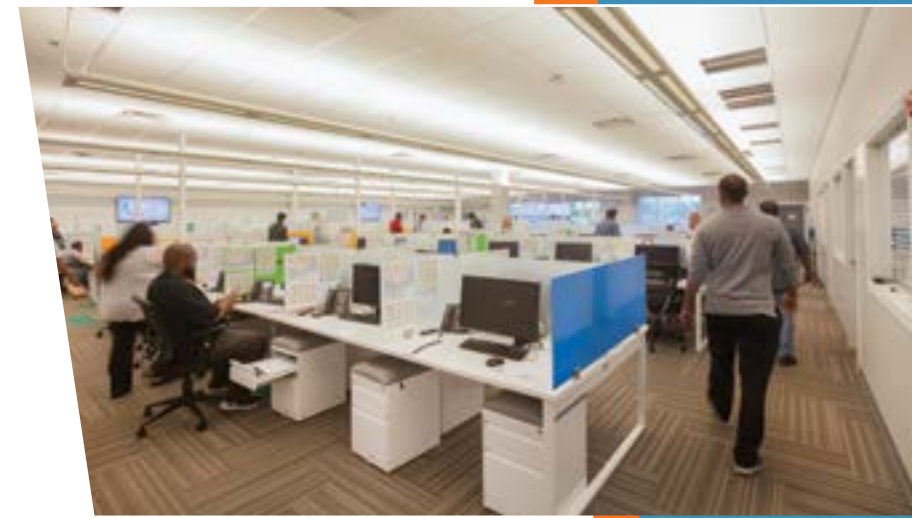


Highlights

- Double door entry from building lobby
- Ample natural light
- Ability to subdivide



[Click here to take a VIRTUAL TOUR of this space](#)





250 S Orange Avenue
Orlando, FL 32801
+1 407 982 8550
www.jll.com/orlando

Darryl Hoffman
+1 407 982 8588
darryl.hoffman@am.jll.com

John Gilbert
+1 407 982 8626
john.gilbert@am.jll.com