



The Ribeiro Companies

# BLOOD DRAW FACILITY/LAB FOR LEASE



**601 SIERRA ROSE DR SUITE 102  
RENO, NV 89511**

**QUAIL CORNERS SOUTH MAINTENANCE ASSOCIATION**

**THE RIBEIRO COMPANIES HAVE SPECIALIZED IN COMMERCIAL PROPERTIES FOR OVER 50 YEARS.**

**EXCLUSIVELY LISTED  
LEASE OPPORTUNITY**

**EDWARD G. YUILL**  
ED.YUILL@RIBEIROCORP.COM

**CALL US TODAY AT  
775.825.7979**



The Ribeiro Companies

**OFFICE HOURS:**  
Monday-Friday  
8:00 AM—5:00 PM

6490 S. McCarran Blvd., Bldg. E  
Reno, NV 89509

[www.ribeirocorp.com](http://www.ribeirocorp.com)

This information has been secured from sources we believe to be reliable, however, we make no representations or warranties, expressed or implied, as to the accuracy of the information. References to square footage or age are approximate. Buyer must verify the information and bears all risk for any inaccuracies. © 2014 The Ribeiro Companies [www.ribeirocorp.com](http://www.ribeirocorp.com)

**Project Mgt./Brokerage: Edward G. Yuill**

**Design/Development: Johnny A. Ribeiro**



The Ribeiro Companies

# PROPERTY INFORMATION

## 601 SIERRA ROSE DR STE 102 • RENO, NV 89511

Suite(s):	102
Asking Rent:	\$3,431.00 Per Month (\$2.10 PSF)
Estimated CAM:	\$1,471.00 Per Month (\$0.90)
Property Type:	Zoning: PLANNED DEVELOPMENT (PD) • Building Type: Office Building
Lease Type:	NNN
Tenancy:	Multi
Square Footage:	1,634 sq ft
Available:	May 1, 2025
Layout	Medical lab draw space.
Year Built:	2005
Broker	3%

**THE RIBEIRO COMPANIES HAVE SPECIALIZED IN COMMERCIAL PROPERTIES FOR OVER 50 YEARS.**

**EXCLUSIVELY LISTED  
LEASE OPPORTUNITY**

**EDWARD G. YUILL**  
ED.YUILL@RIBEIROCORP.COM

**CALL US TODAY AT  
775.825.7979**



The Ribeiro Companies

**OFFICE HOURS:**  
Monday-Friday  
**8:00 AM—5:00 PM**

6490 S. McCarran Blvd., Bldg. E  
Reno, NV 89509

[www.ribeirocorp.com](http://www.ribeirocorp.com)

This information has been secured from sources we believe to be reliable, however, we make no representations or warranties, expressed or implied, as to the accuracy of the information. References to square footage or age are approximate. Buyer must verify the information and bears all risk for any inaccuracies. © 2014 The Ribeiro Companies  
[www.ribeirocorp.com](http://www.ribeirocorp.com)

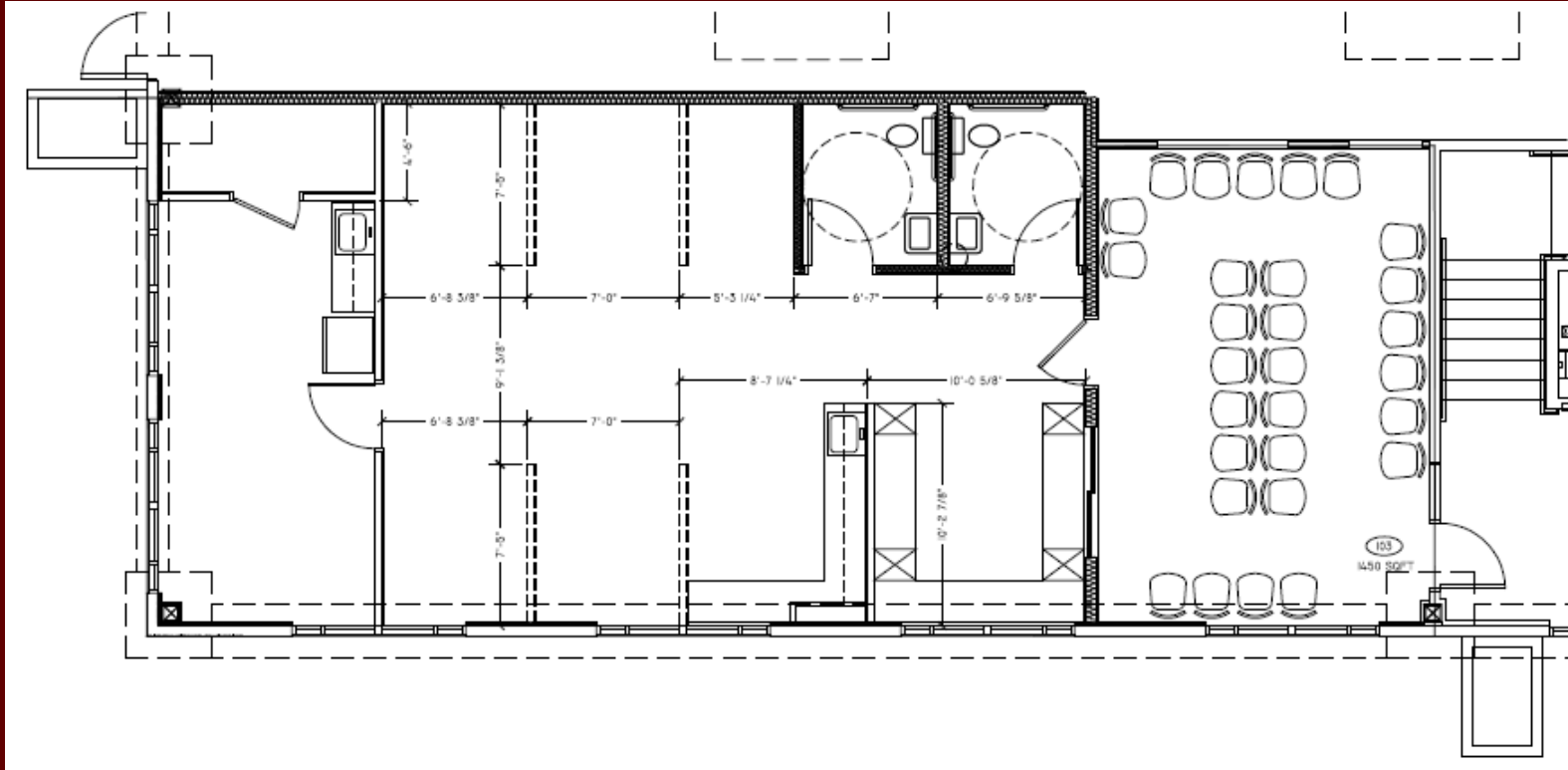
**Project Mgt./Brokerage: Edward G. Yuill**

**Design/Development: Johnny A. Ribeiro**



The Ribeiro Companies

# 601 SIERRA ROSE DR STE 102 • RENO, NV 89511



**THE RIBEIRO COMPANIES HAVE SPECIALIZED IN COMMERCIAL PROPERTIES FOR OVER 50 YEARS.**

**EXCLUSIVELY LISTED  
LEASE OPPORTUNITY**

**EDWARD G. YUILL**  
ED.YUILL@RIBEIROCORP.COM

**CALL US TODAY AT  
775.825.7979**



**OFFICE HOURS:**  
Monday-Friday  
8:00 AM—5:00 PM

6490 S. McCarran Blvd., Bldg. E  
Reno, NV 89509

[www.ribeirocorp.com](http://www.ribeirocorp.com)

*This information has been secured from sources we believe to be reliable, however, we make no representations or warranties, expressed or implied, as to the accuracy of the information. References to square footage or age are approximate. Buyer must verify the information and bears all risk for any inaccuracies. © 2014 The Ribeiro Companies  
[www.ribeirocorp.com](http://www.ribeirocorp.com)*

**Project Mgt./Brokerage: Edward G. Yuill**  
**Design/Development: Johnny A. Ribeiro**