

46029 - 46155 FIVE MILE RD
PLYMOUTH/TWP., MICHIGAN

HI-TECH FOR LEASE
3,250 Square Feet Available



**SIGNATURE
ASSOCIATES**
KNOW SIGNATURE | KNOW RESULTS

PLYMOUTH TECHNOLOGY CENTER



PROPERTY FEATURES

- 3,250 square feet available
- Unit offers main road visibility and signage
- Centrally located in the heart of the Plymouth Technology Parks
- Easy access to M-14/I-275 interchange
- Close to multiple hotels, St. John's conference facilities, golf and restaurants
- Aggressive lease rates



For more information, please contact:

CHRISTOPHER M. D'ANGELO
(248) 948 0109
cdangelo@signatureassociates.com

JASON STOUGH
(248) 948 4180
jstough@signatureassociates.com

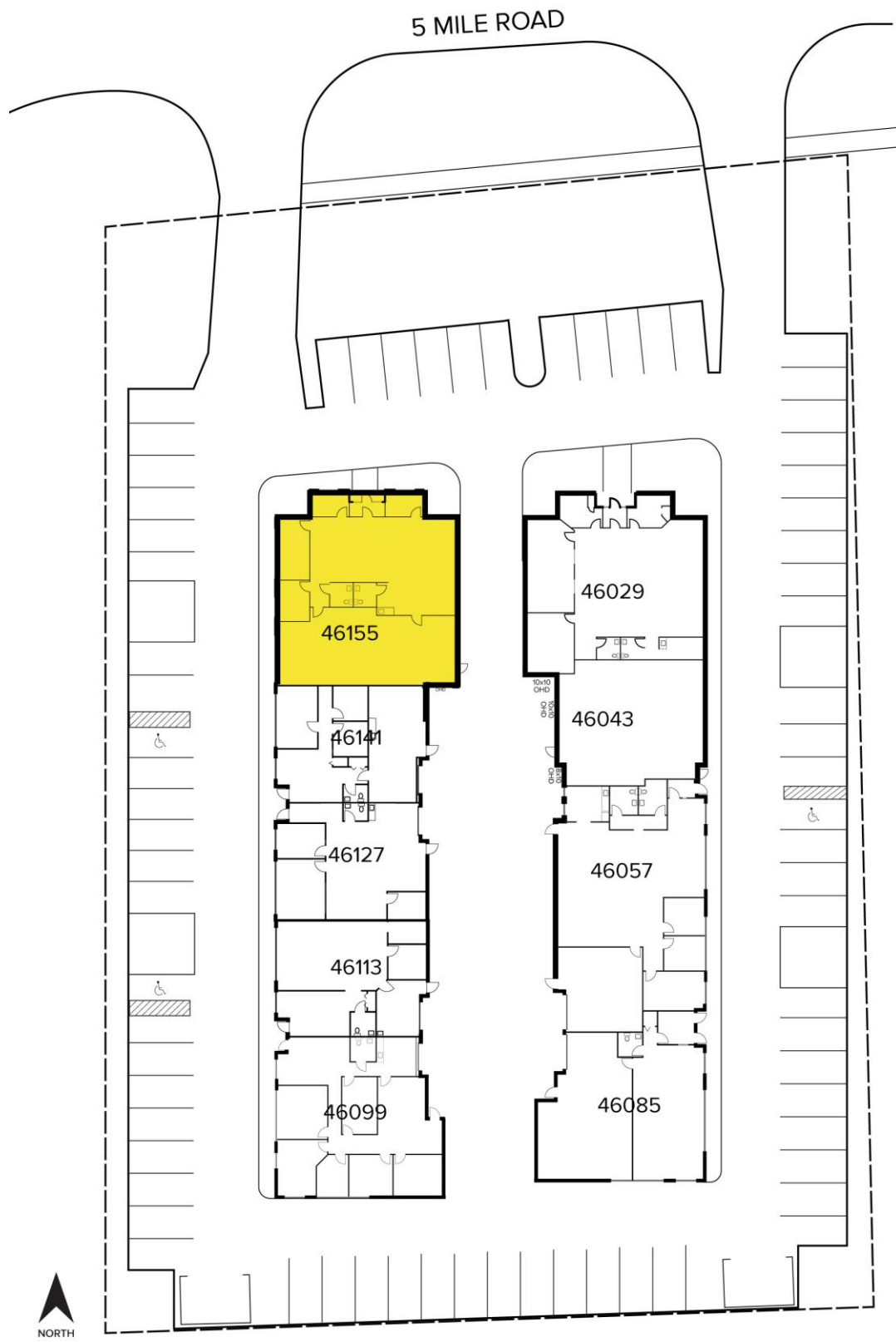
SIGNATURE ASSOCIATES
One Towne Square, Suite 1200
Southfield, MI 48076
www.signatureassociates.com

46029 - 46155 Five Mile Road – Plymouth/Twp., Michigan

Hi-Tech For Lease

3,250
Square Feet
AVAILABLE

Site Plan



For more information, please contact:

CHRISTOPHER M. D'ANGELO
(248) 948 0109
cdangelo@signatureassociates.com

JASON STOUGH
(248) 948 4180
jstough@signatureassociates.com

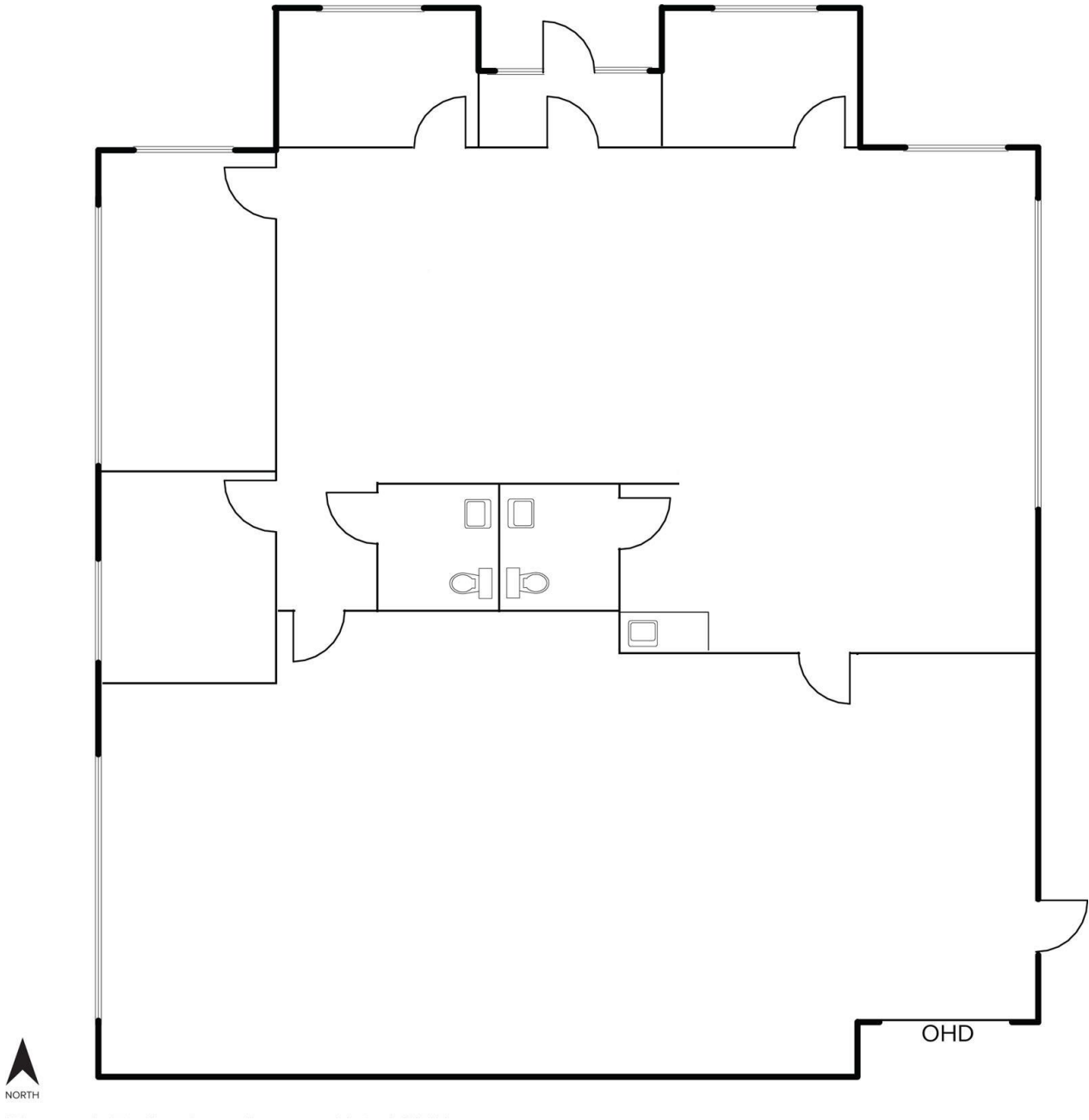
SIGNATURE ASSOCIATES
One Towne Square, Suite 1200
Southfield, MI 48076
www.signatureassociates.com

46029 - 46155 Five Mile Road – Plymouth/Twp., Michigan
Hi-Tech For Lease

3,250
Square Feet
AVAILABLE

Floor Plan

AVAILABILITY			
UNIT	TOTAL SF	OFFICE SF	RATE
46155	3,250	2,925	\$16.76 G + U



For more information, please contact:

CHRISTOPHER M. D'ANGELO
(248) 948 0109
cdangelo@signatureassociates.com

JASON STOUGH
(248) 948 4180
jstough@signatureassociates.com

SIGNATURE ASSOCIATES
One Towne Square, Suite 1200
Southfield, MI 48076
www.signatureassociates.com