



## Property Description

A 26,939 square foot, "L-shaped" strip center built in 1999. This one-story, retail center is constructed of brick veneer with retail glass fronts. The center sits on 2.64 acres with ample parking, and easy access from S.W. 19th Street and the I-35 Service Road. High visibility and class "A" curb appeal. Riverwalk's traffic counts are well over 90,000 VPD. The City of Moore's average household income in both a three and five mile radius is in excess of the national average.

## Property Highlights

- RETAIL SPACE AVAILABLE
- 4,536 SF (MOL)
- \$20.00 PSF
- Pylon Signage
- High Traffic Count Area
- Ample Parking
- Great Visibility
- Former Medical Space

## Offering Summary

<b>Lease Rate:</b>	\$20 SF/yr (NNN)
<b>Available SF:</b>	4,536 SF
<b>Lot Size:</b>	13,068 SF
<b>Building Size:</b>	26,939 SF

Demographics	1 Mile	3 Miles	5 Miles
<b>Total Households</b>	2,204	22,907	43,569
<b>Total Population</b>	5,889	60,709	114,625
<b>Average HH Income</b>	\$67,003	\$65,122	\$70,474

**RICK PRITCHETT, CCIM**

405.605.0831

rick@precorreality.com



**PRECOR**  
REALTY ADVISORS

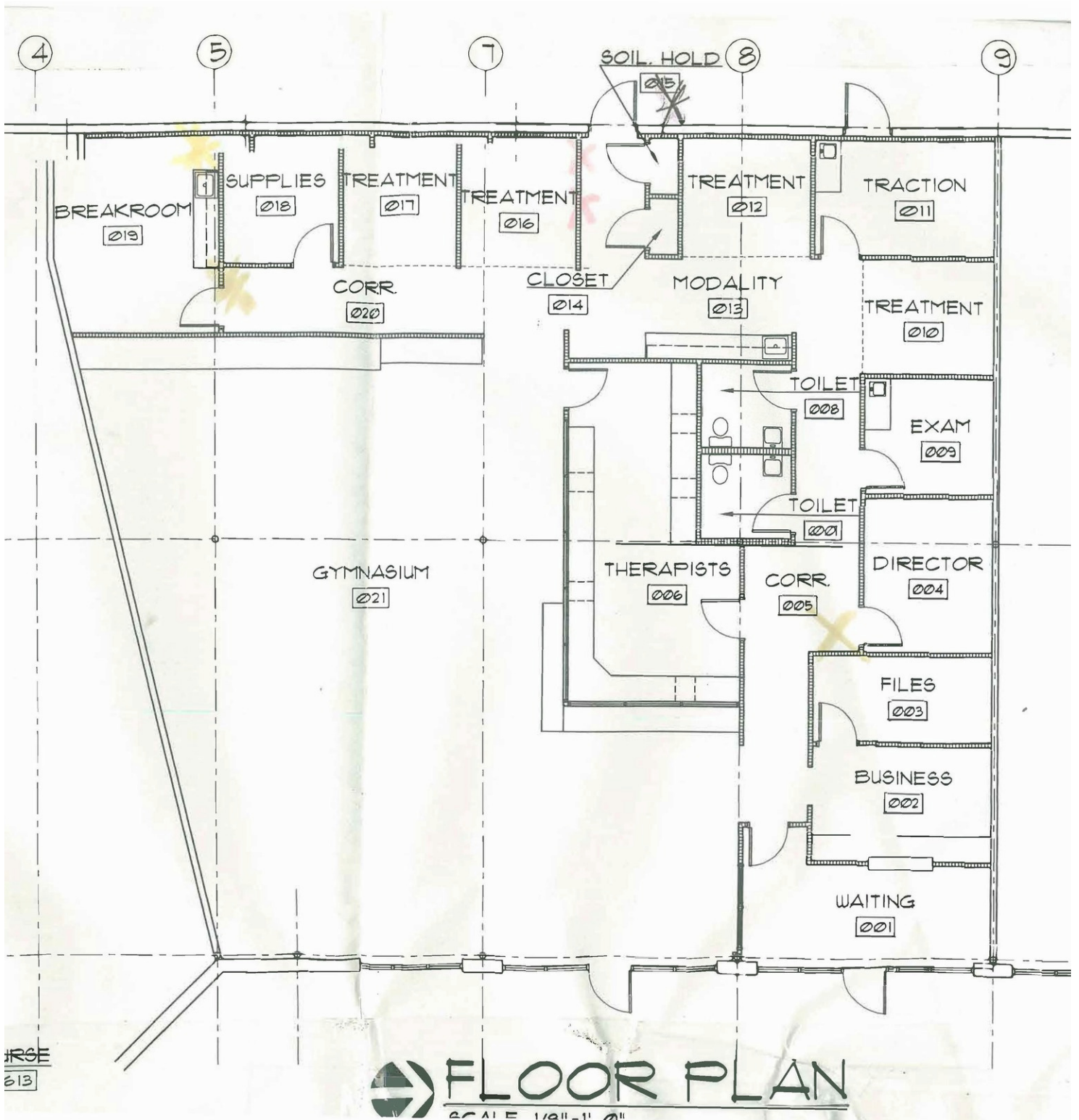
PRECOR REALTY ADVISORS, INC | 825 N. BROADWAY, SUITE 300, OKLAHOMA CITY, OK 73102 | 405.605.0825 | PRECORREALTY.COM

The information above has been obtained from sources believed reliable. While we do not doubt its accuracy, PrecorRuffin, LLC has not verified it and makes no guarantee, warranty or representation about it. It is your responsibility to independently confirm its accuracy.

For Lease

2109-2111 Riverwalk Drive

RIVERWALK PLAZA 2109-2111



RICK PRITCHETT, CCIM

405.605.0831

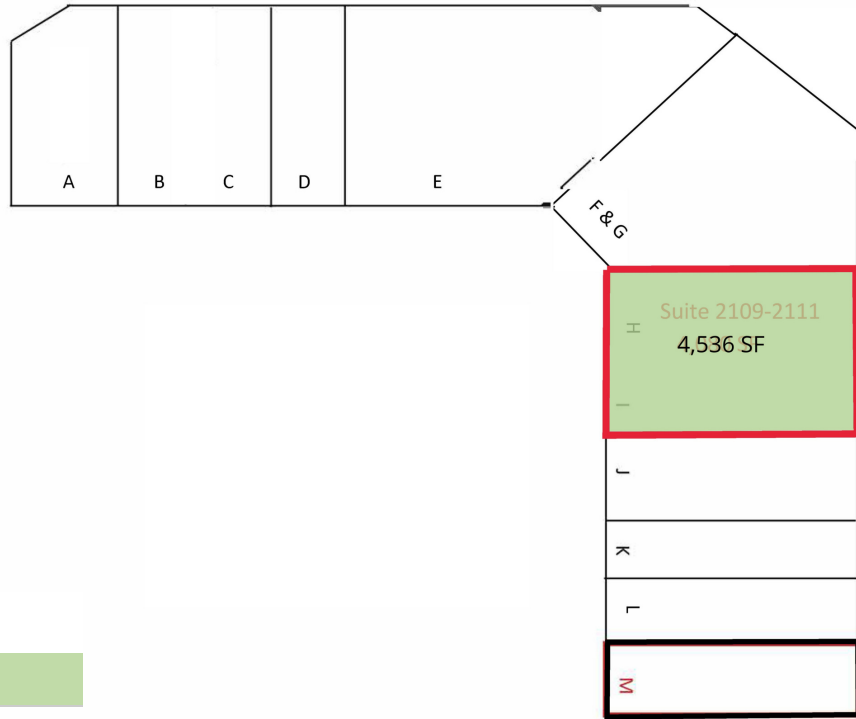
rick@precorrealty.com



PRECOR  
REALTY ADVISORS

PRECOR REALTY ADVISORS, INC | 825 N. BROADWAY, SUITE 300, OKLAHOMA CITY, OK 73102 | 405.605.0825 | PRECORREALTY.COM

The information above has been obtained from sources believed reliable. While we do not doubt its accuracy, PrecorRuffin, LLC has not verified it and makes no guarantee, warranty or representation about it. It is your responsibility to independently confirm its accuracy.



## Legend

Available

## Lease Information

<b>Lease Type:</b>	NNN	<b>Lease Term:</b>	36 months
<b>Total Space:</b>	4,536 SF	<b>Lease Rate:</b>	\$20 SF/yr

## Available Spaces

Suite	Tenant	Size	Type	Rate	Description
2109 - 2111	Available	4,536 SF	NNN	\$20.00 SF/yr	-

**RICK PRITCHETT, CCIM**

405.605.0831

rick@precorreality.com



**PRECOR**  
REALTY ADVISORS

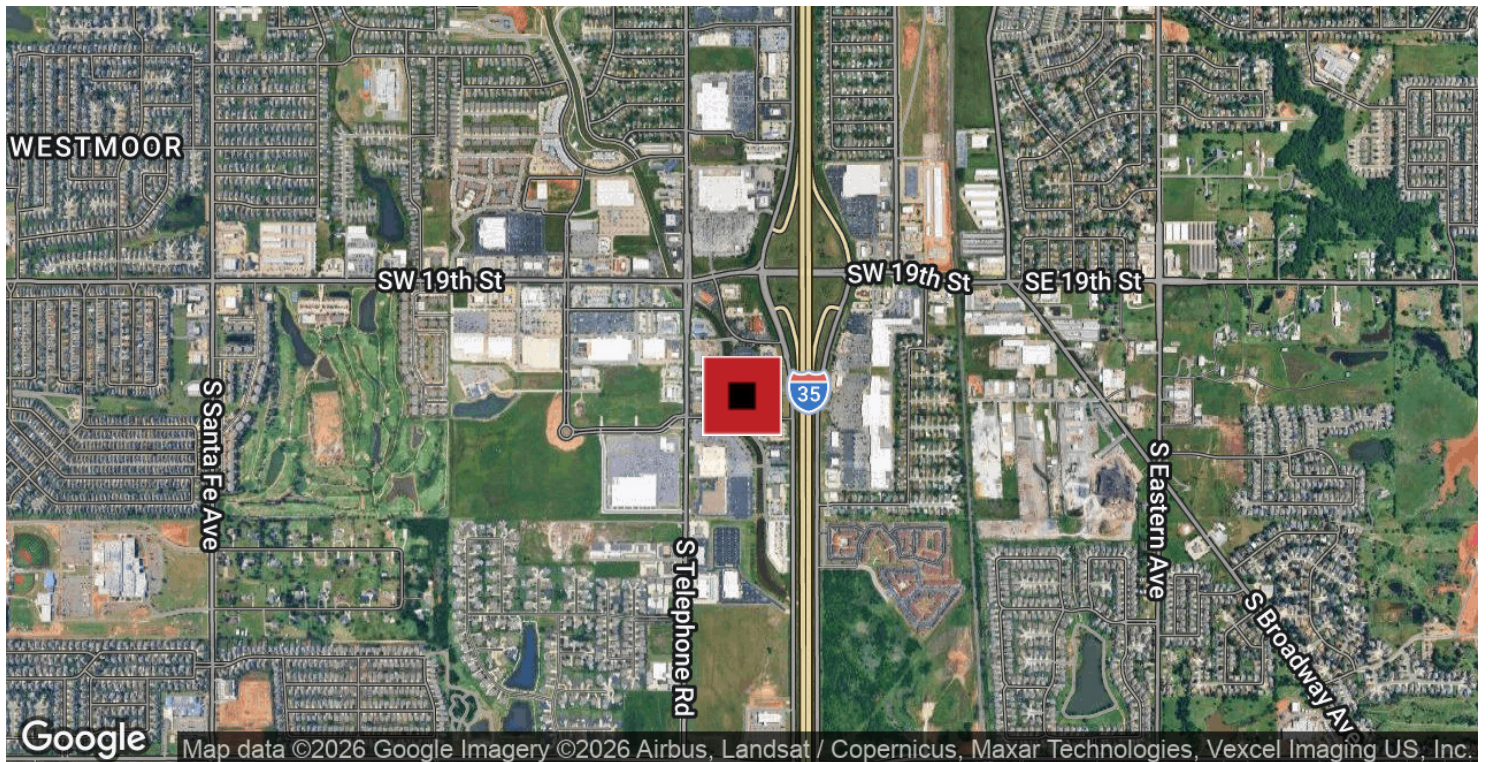
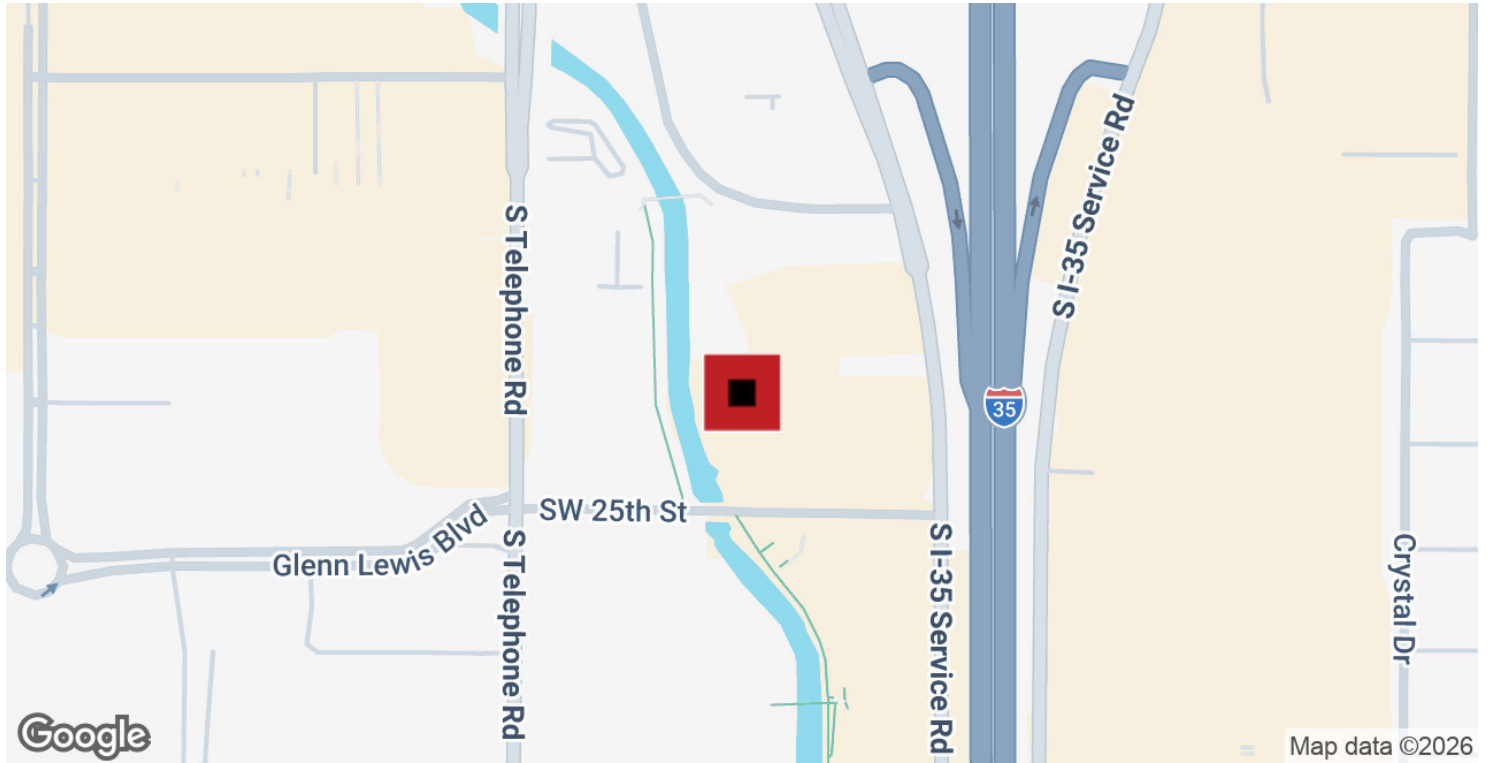
PRECOR REALTY ADVISORS, INC | 825 N. BROADWAY, SUITE 300, OKLAHOMA CITY, OK 73102 | 405.605.0825 | PRECORREALTY.COM

The information above has been obtained from sources believed reliable. While we do not doubt its accuracy, PrecorRuffin, LLC has not verified it and makes no guarantee, warranty or representation about it. It is your responsibility to independently confirm its accuracy.

For Lease

2109-2111 Riverwalk Drive

RIVERWALK PLAZA 2109-2111



**RICK PRITCHETT, CCIM**

405.605.0831

rick@precorrealty.com



PRECOR REALTY ADVISORS, INC | 825 N. BROADWAY, SUITE 300, OKLAHOMA CITY, OK 73102 | 405.605.0825 | PRECORREALTY.COM

The information above has been obtained from sources believed reliable. While we do not doubt its accuracy, PrecorRuffin, LLC has not verified it and makes no guarantee, warranty or representation about it. It is your responsibility to independently confirm its accuracy.