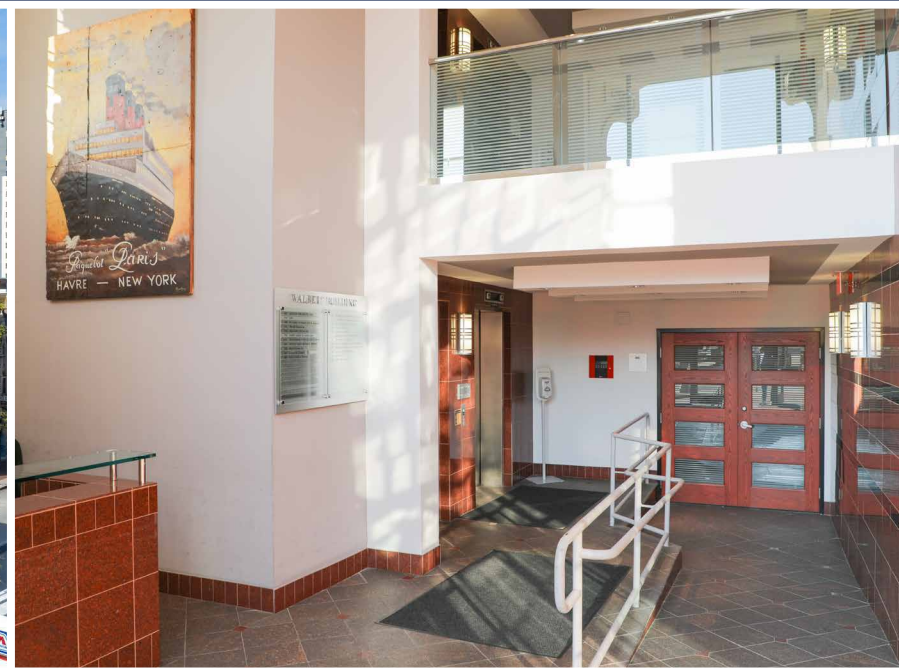


# FOR LEASE

BALTIMORE COUNTY, MD

# THE WALBERT BUILDING

1800 NORTH CHARLES STREET BALTIMORE, MD 21201



## PROPERTY HIGHLIGHTS:

- ▶ 67,250 SF OF TOTAL OFFICE SPACE
- ▶ FREE SHARED CONFERENCE ROOM
- ▶ ON-SITE PARKING AVAILABLE
- ▶ FULL-TIME LOBBY ATTENDANT
- ▶ NEW OPERABLE WINDOWS
- ▶ SBA HUB ZONE
- ▶ 2 BLOCKS FROM PENN STATION

**DAVID S. BROWN**  
ENTERPRISES, L.T.D.

**KEVIN KEANE | SVP, OFFICE LEASING**  
410.581.2519 | KEVIN@DAVIDSBROWN.COM

**BRENT MANGUM | VP, OFFICE LEASING**  
410.581.2518 | BRENT@DAVIDSBROWN.COM

**NOAH ADLER | LEASING ASSOCIATE**  
410.581.2510 | NADLER@DAVIDSBROWN.COM

# FOR LEASE

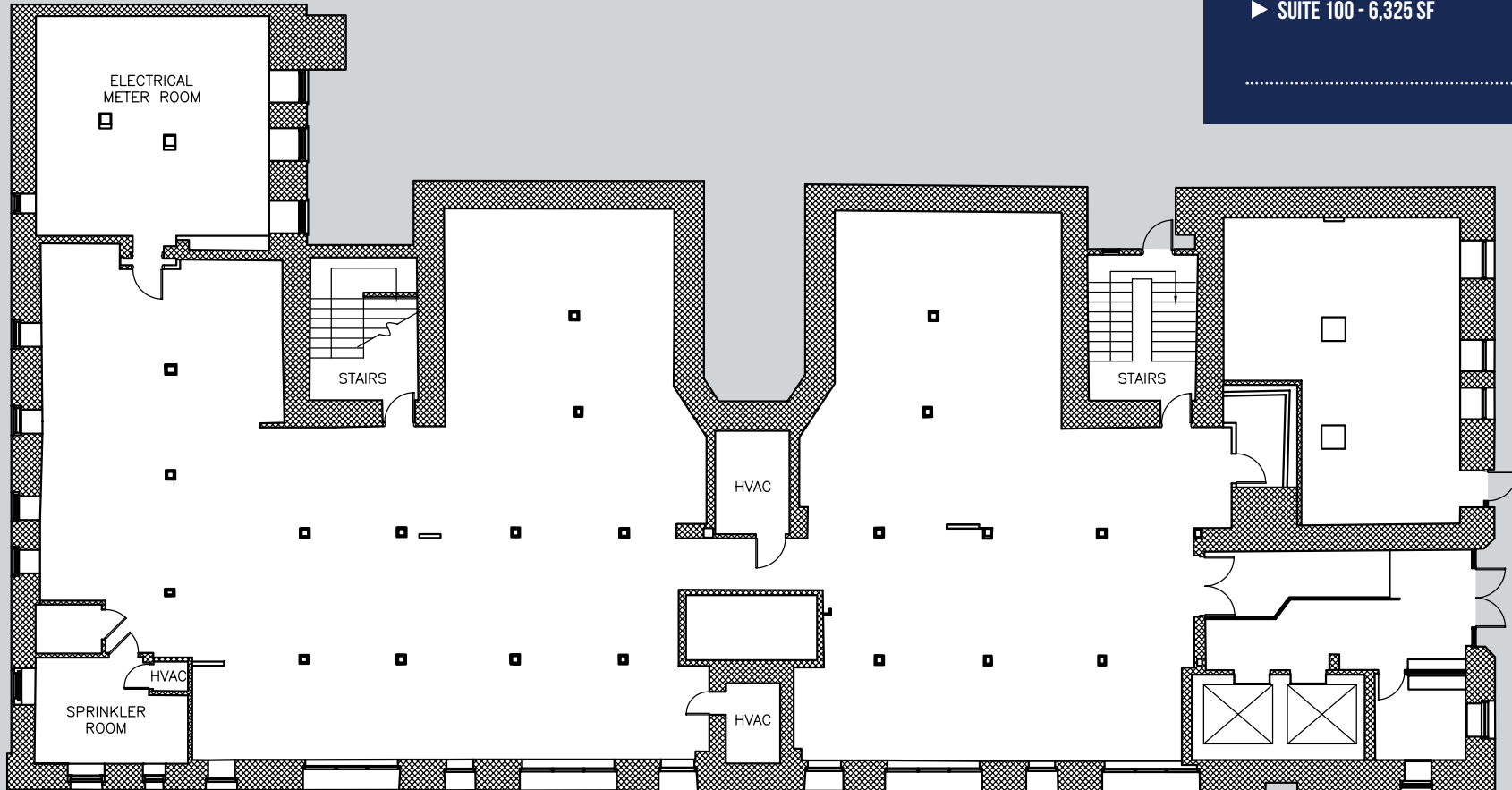
BALTIMORE COUNTY, MD

# THE WALBERT BUILDING

1800 NORTH CHARLES STREET BALTIMORE, MD 21201

AVAILABLE

▶ SUITE 100 - 6,325 SF



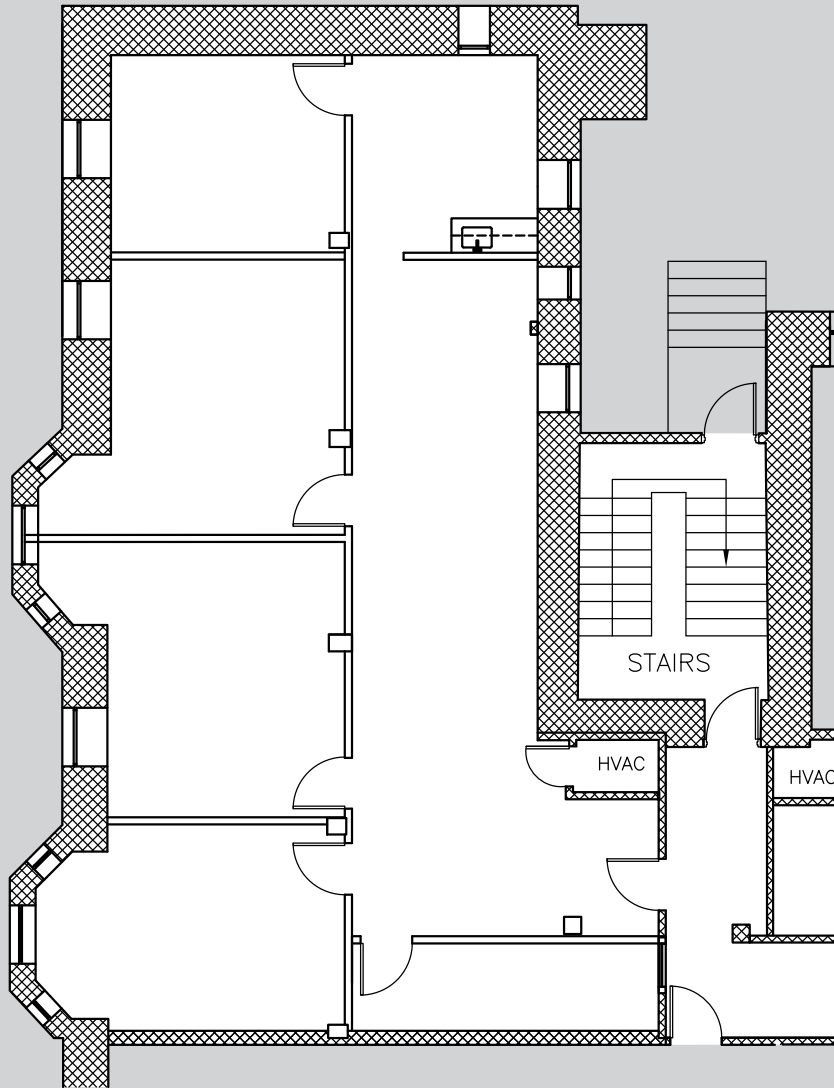


# FOR LEASE

**B** BALTIMORE COUNTY, MD

# THE WALBERT BUILDING

1800 NORTH CHARLES STREET BALTIMORE, MD 21201



AVAILABLE

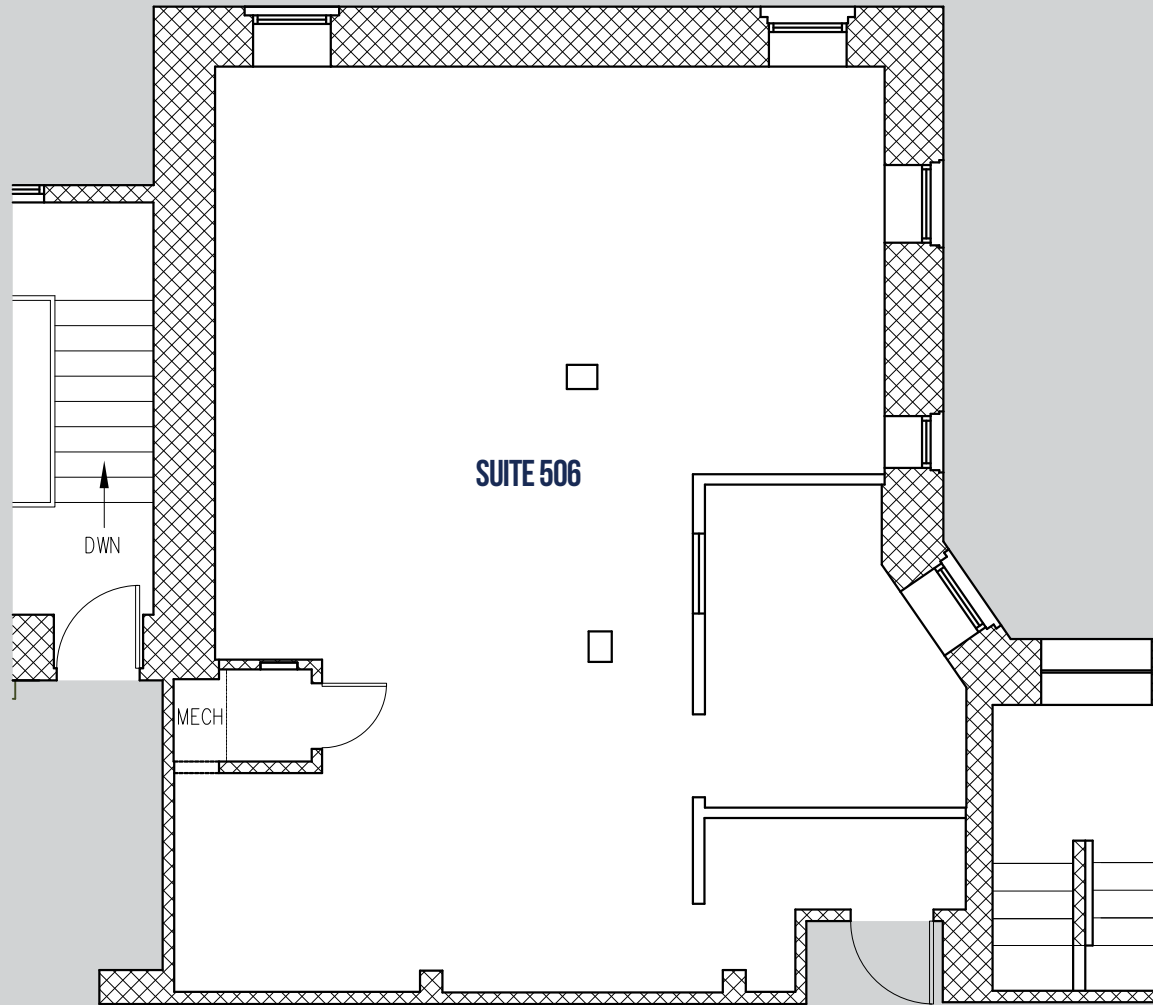
▶ SUITE 304 - 1,870 SF

# FOR LEASE

**B** BALTIMORE COUNTY, MD

# THE WALBERT BUILDING

1800 NORTH CHARLES STREET BALTIMORE, MD 21201



AVAILABLE

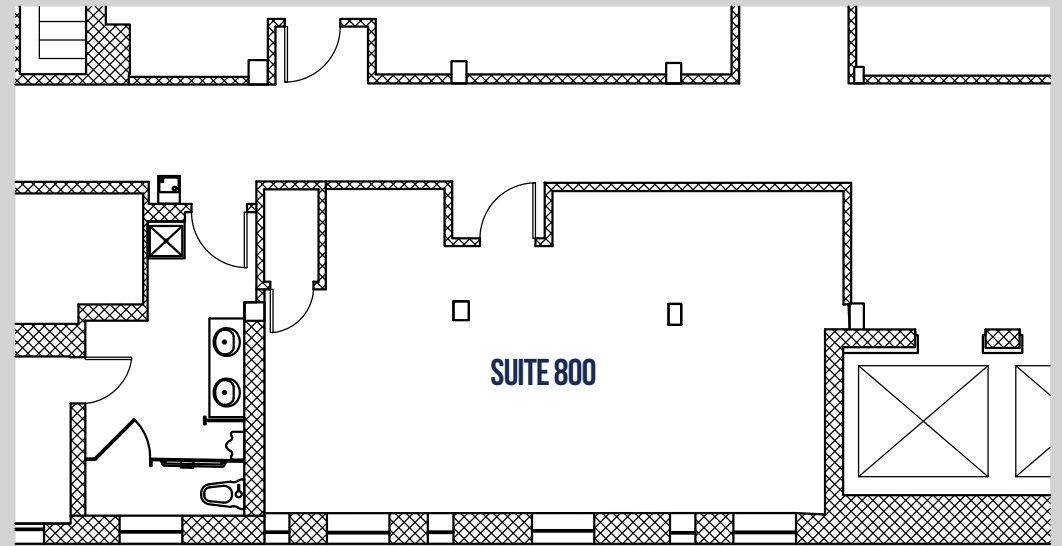
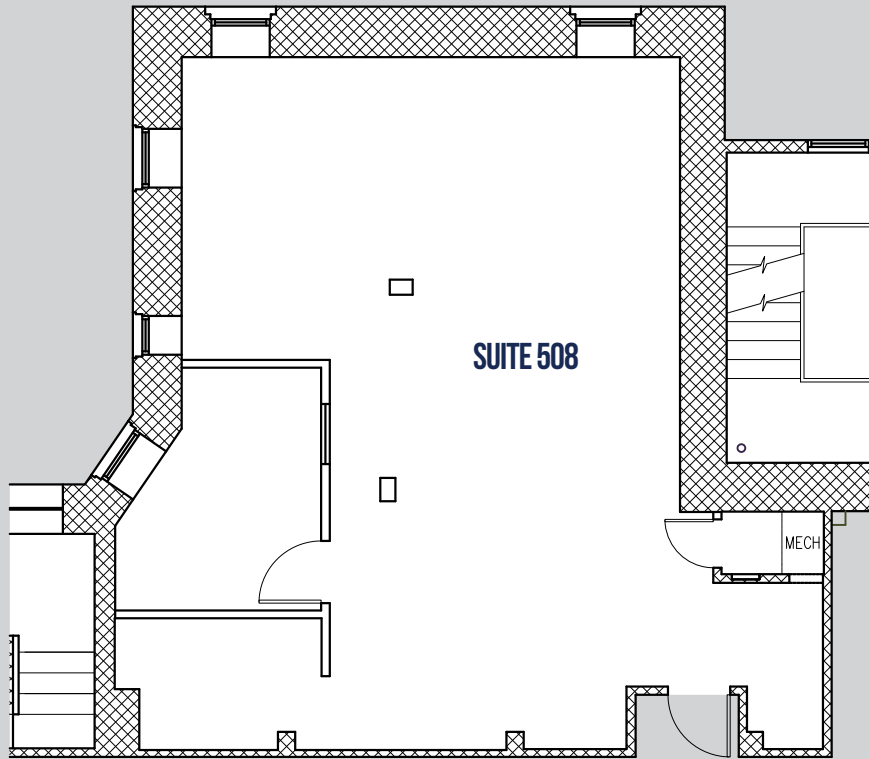
▶ SUITE 506 - 1,025 SF

# FOR LEASE

BALTIMORE COUNTY, MD

# THE WALBERT BUILDING

1800 NORTH CHARLES STREET BALTIMORE, MD 21201



## AVAILABLE

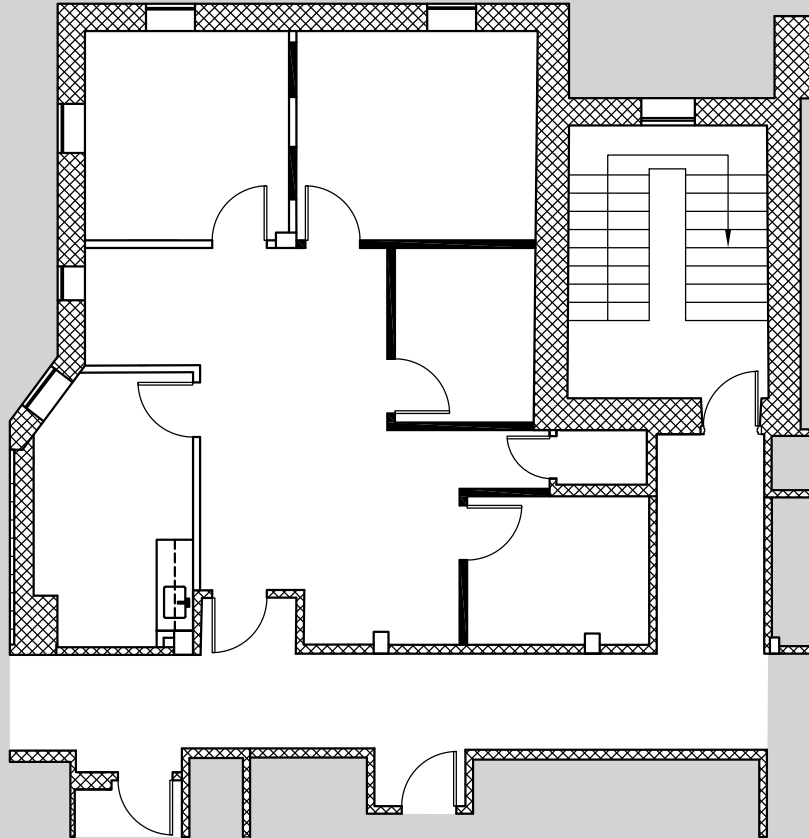
- ▶ SUITE 508 - 1,090 SF
- ▶ SUITE 800 - 632 SF

# FOR LEASE

**B** BALTIMORE COUNTY, MD

# THE WALBERT BUILDING

1800 NORTH CHARLES STREET BALTIMORE, MD 21201



.....  
**AVAILABLE**

▶ SUITE 808 - 1,106 SF

.....

**B** DAVID S. BROWN  
ENTERPRISES, LTD.

**KEVIN KEANE | SVP, OFFICE LEASING**  
410.581.2519 ✉ KEVIN@DAVIDSBROWN.COM

**BRENT MANGUM | VP, OFFICE LEASING**  
410.581.2518 ✉ BRENT@DAVIDSBROWN.COM

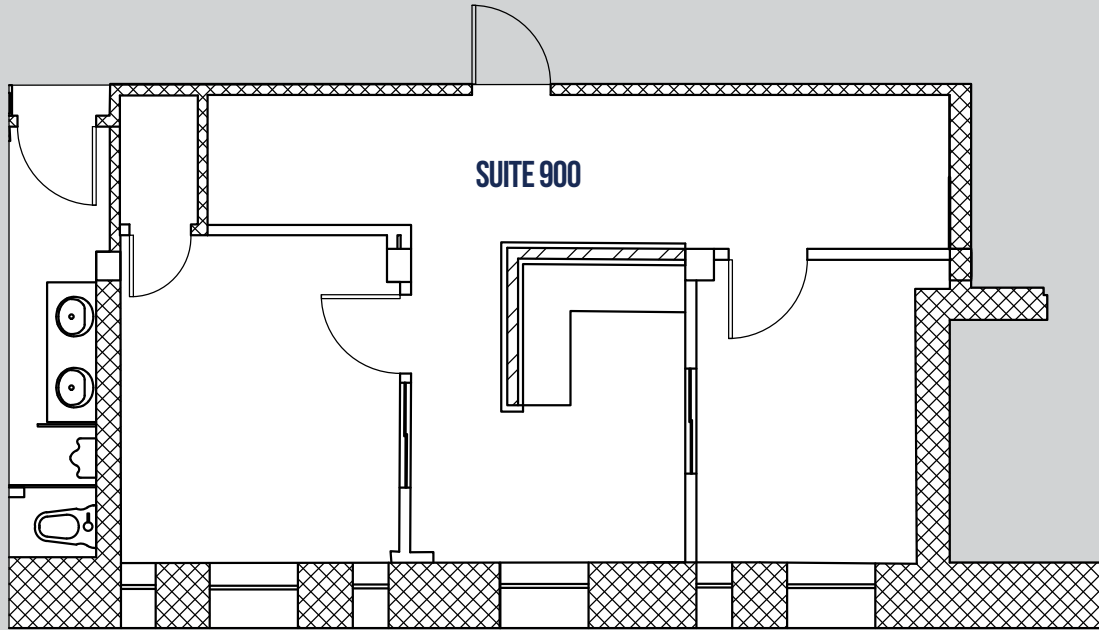
**NOAH ADLER | LEASING ASSOCIATE**  
410.581.2510 ✉ NADLER@DAVIDSBROWN.COM

# FOR LEASE

**B** BALTIMORE COUNTY, MD

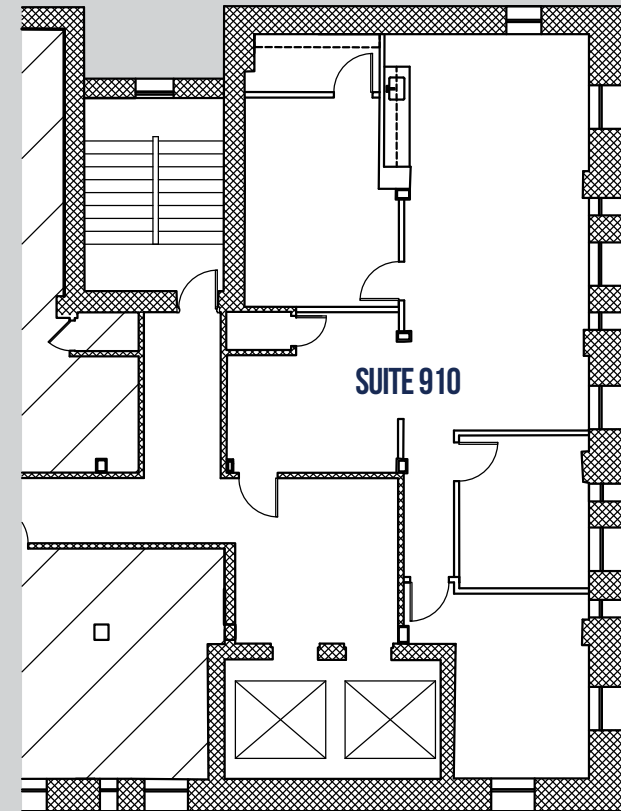
# THE WALBERT BUILDING

1800 NORTH CHARLES STREET BALTIMORE, MD 21201



## AVAILABLE

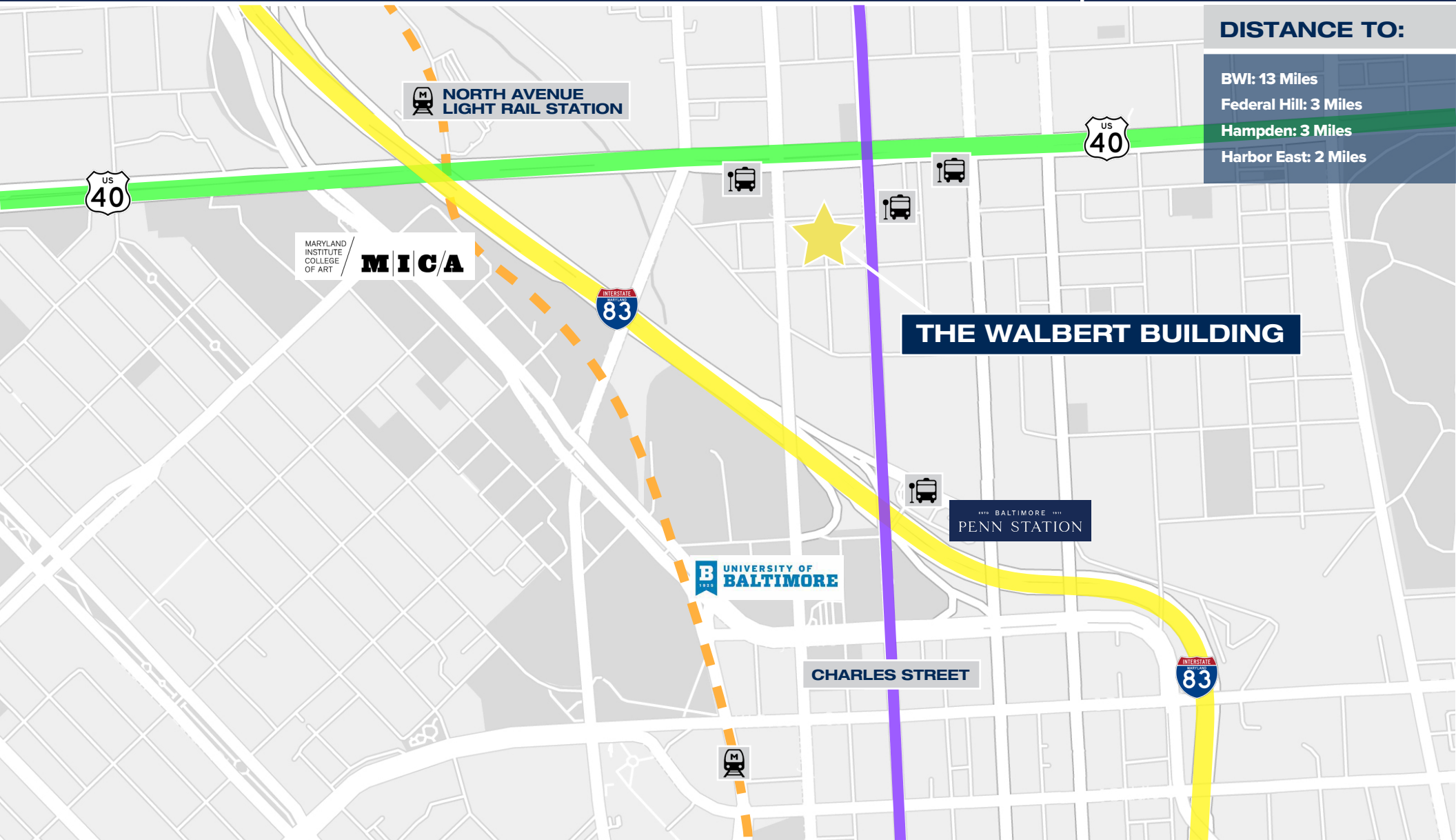
- ▶ SUITE 900 - 673 SF
- ▶ SUITE 910 - 1,446 SF



# THE WALBERT BUILDING

1800 NORTH CHARLES STREET BALTIMORE, MD 21201

# MAP



## DISTANCE TO:

- BWI: 13 Miles
- Federal Hill: 3 Miles
- Hampden: 3 Miles
- Harbor East: 2 Miles