

An aerial photograph of a city street corner. The central focus is a large, multi-story building with a grid of windows and brick accents. To the left is a smaller, older brick building with arched windows. To the right is another brick building. The street is paved and has some parked cars and utility poles. The sky is blue with some clouds.

For Lease

Contact us:

Matt Fahey
Senior Vice President
+1 414 278 6860
matt.fahey@colliers.com

Mike Wanezek
Partner
+1 414 278 6826
mike.wanezek@colliers.com

Colliers | Wisconsin
833 E Michigan Street, Suite 500
Milwaukee, WI 53202
P: +1 414 276 9500
F: +1 414 276 9501
colliers.com

| DYEHOUSE |

320 E Buffalo Street
Milwaukee, Wisconsin 53202

Available Space	1,494 - 9,647 RSF
Building Size	123,500 SF
OpEx (2025 Est.)	\$9.00/SF <i>Tenant to pay sub-metered electric</i>
Lease Rate	\$16.50/SF NNN



Building Overview

Located in Milwaukee's Third Ward, on the corner of Milwaukee Street and Buffalo Street, the Dye House was constructed in 1920 for the Phoenix Hosiery Co. It stands as the second tallest building in the neighborhood, originally serving as a factory for dyeing silk stockings during the Jazz Age.

320 E Buffalo Street
Milwaukee, Wisconsin 53202

Available Space	1,494 - 9,647 RSF
Typical Floor Plate	23,062 SF
Stories	8
Year Built	1922 / Renovated 2018
Parking	Multiple Public Parking Structures & Surface Lots

On-site Retailers:



DYEHOUSE



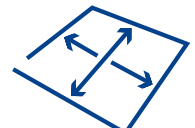
Located in the Historic Third Ward



Various Meeting Spaces



Recent Common Area Improvements



Flexible Floor Plates

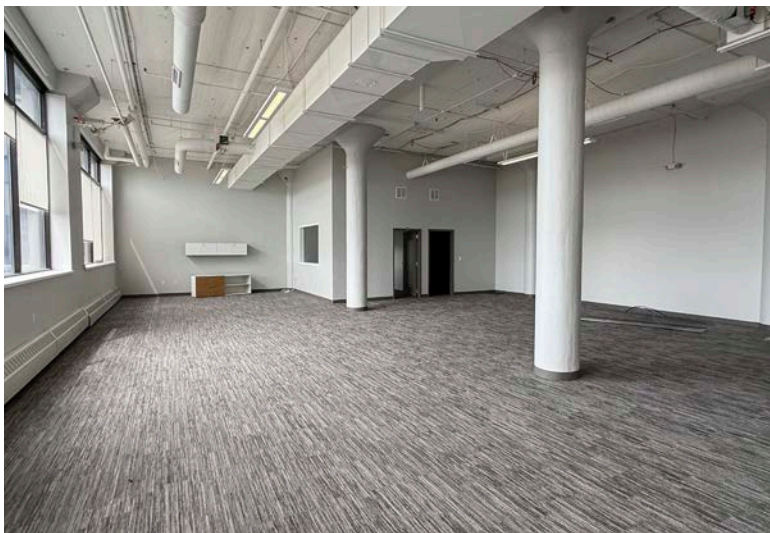
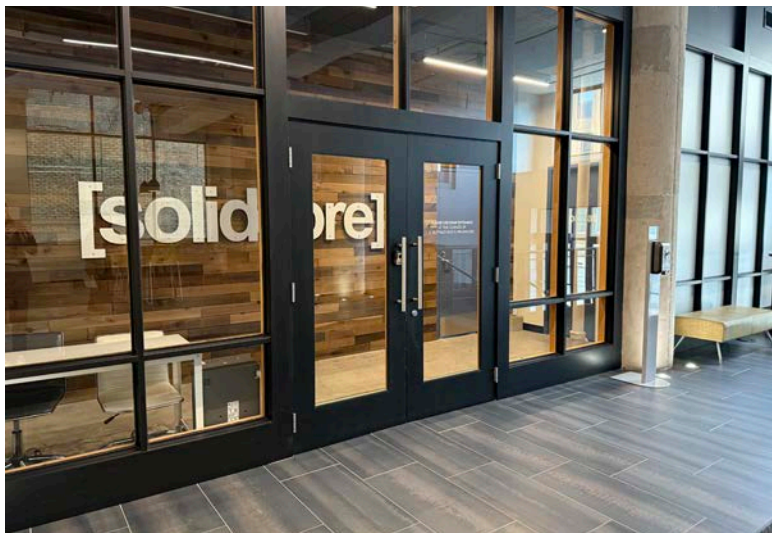
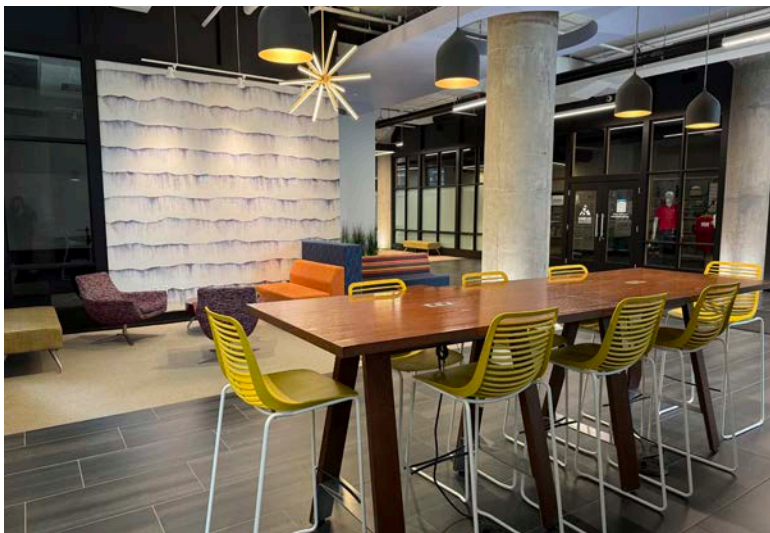
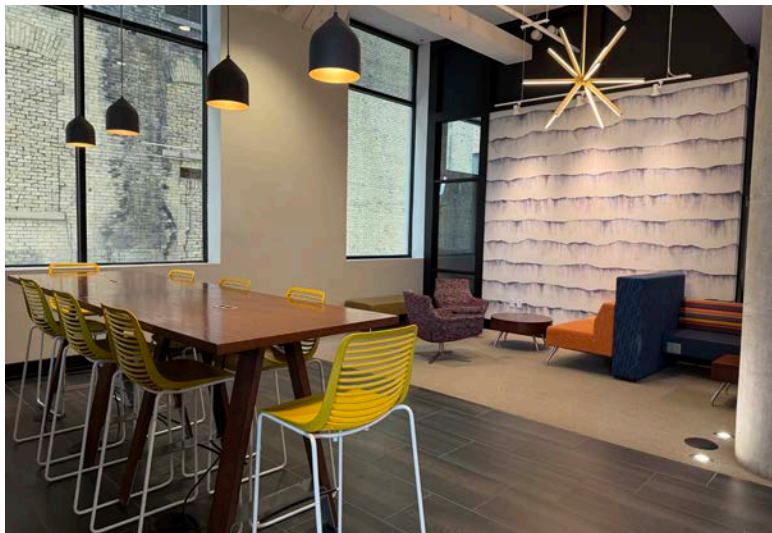


98 Walk Score (Walker's Paradise)



Bike Storage Available

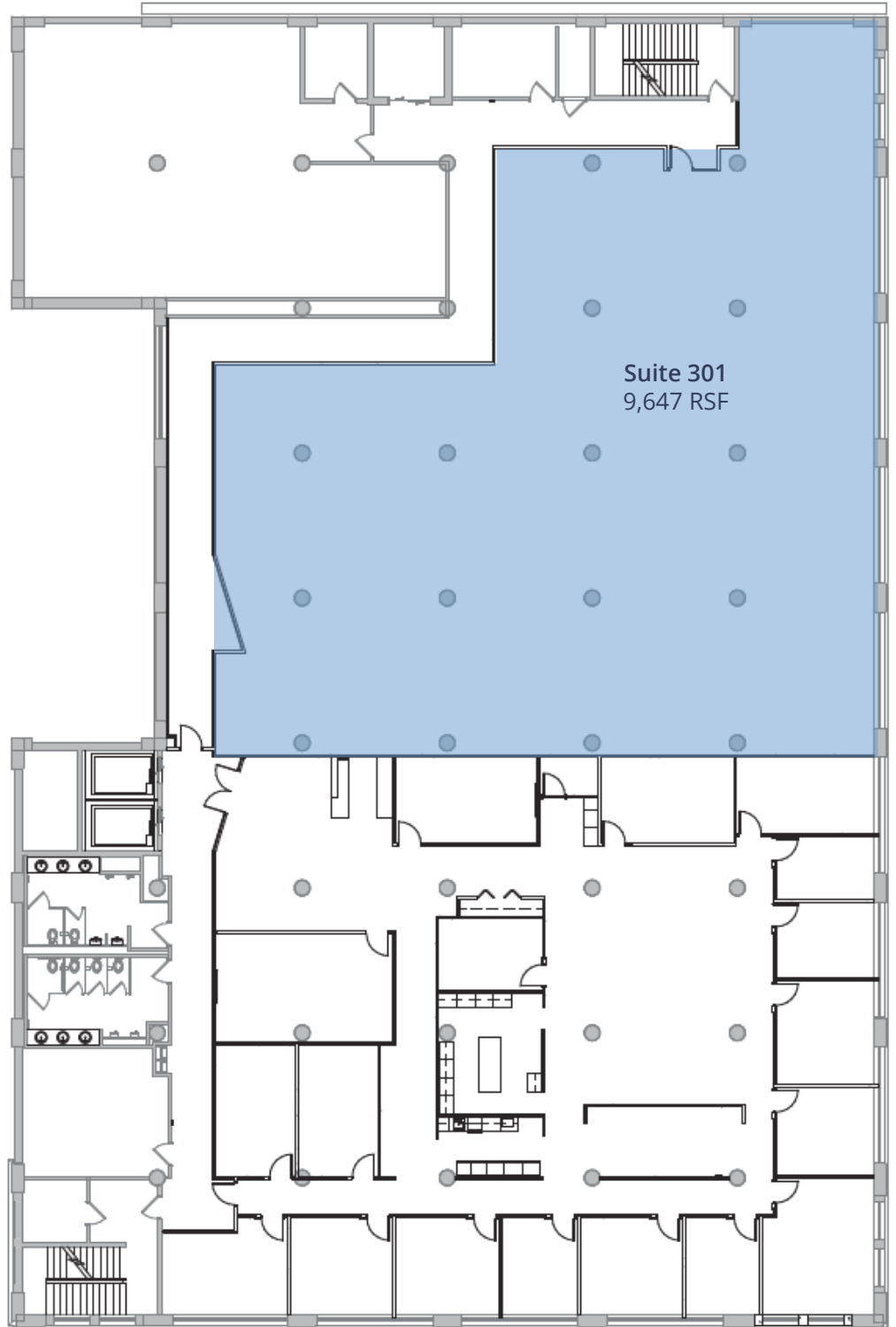
Building Photos



Available Space

Third Floor

Suite 301
9,647 RSF



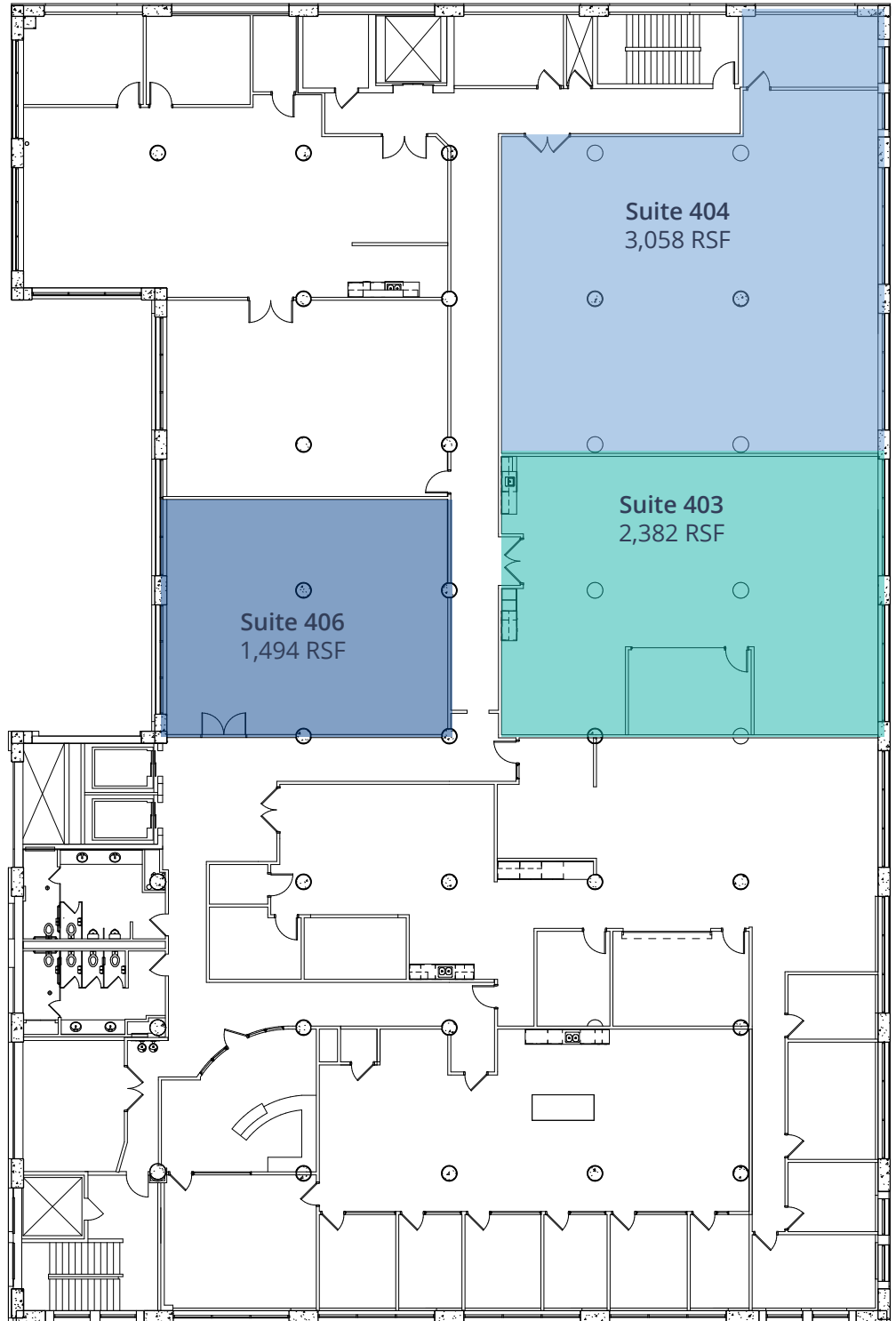
Available Space

Fourth Floor

Suite 403
2,382 RSF

Suite 404
3,058 RSF

Suite 406
1,494 RSF



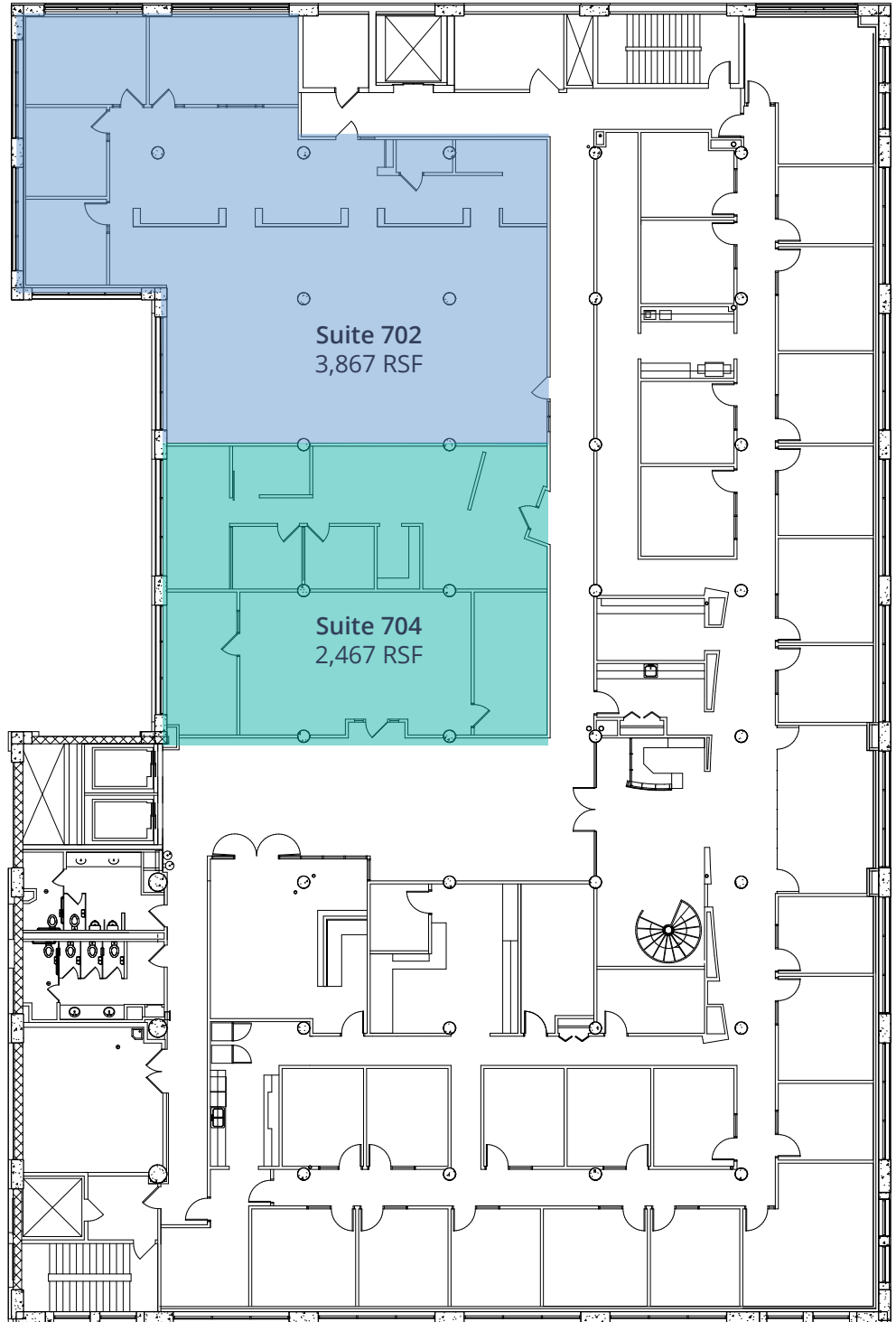
Available Space

Seventh Floor

Suite 702
3,867 RSF

Suite 704
2,467 RSF

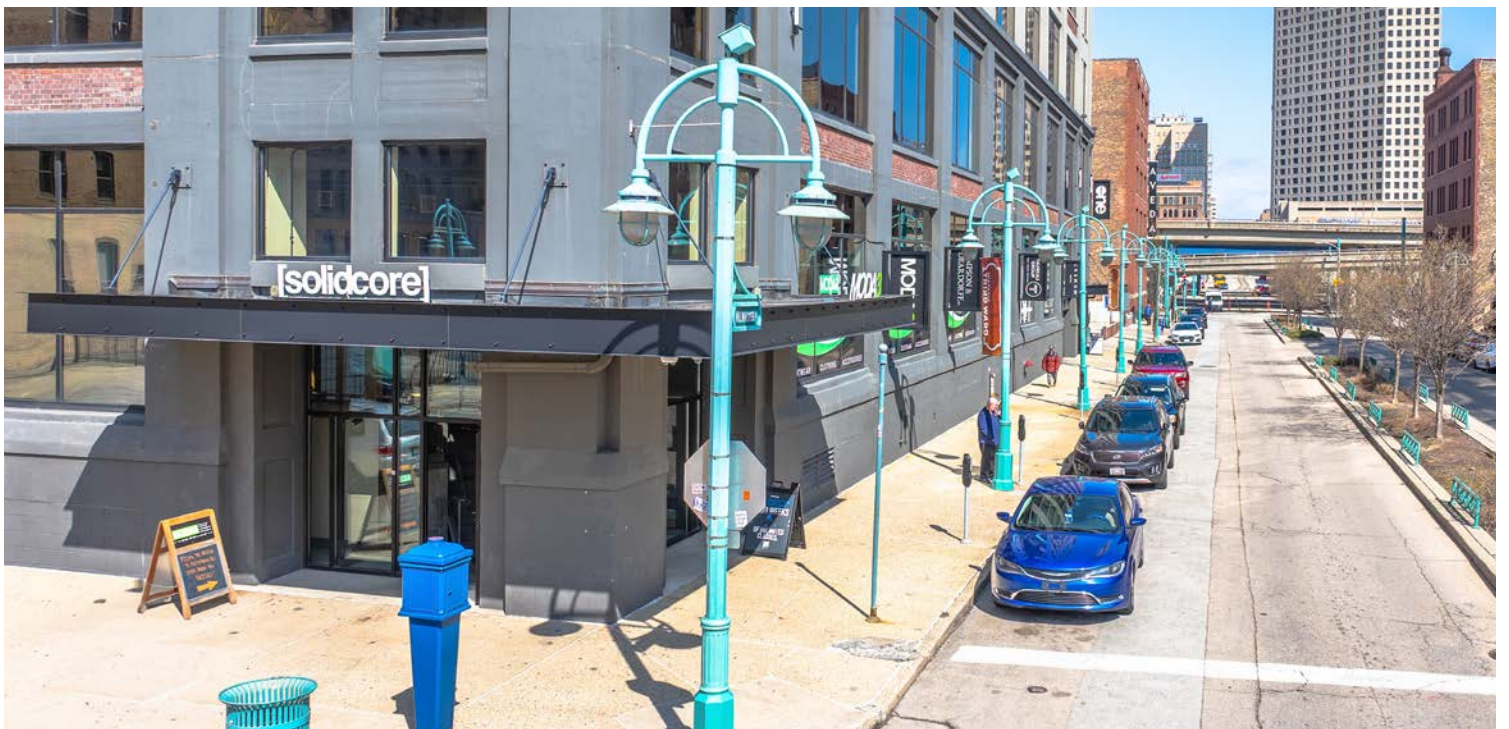
Contiguous to
6,334 RSF



Location



Location





Nearby Parking Options



- 1 330 N Broadway - Surface Lot
- 2 240 N Milwaukee St - Surface Lot
- 3 404 E St Paul Ave - Surface Lot
- 4 212 N Milwaukee St - Structure Lot
- 5 417 E Chicago St - Surface Lot
- 6 241 N Broadway - Surface Lot
- 7 500 N Broadway - Surface Lot
- 8 322 E Clybourn St - Surface Lot

State Of Wisconsin | Disclosure to Non-Residential Customers

Prior to negotiating on your behalf the Brokerage firm, or an agent associated with the firm, must provide you the following disclosure statement:

Broker Disclosure to Customers

You are a customer of the brokerage firm (hereinafter Firm). The Firm is either an agent of another party in the transaction or a subagent of another firm that is the agent of another party in the transaction. The broker or a salesperson acting on behalf of the Firm may provide brokerage services to you. Whenever the Firm is providing brokerage services to you, the Firm and its brokers and salespersons (hereinafter Agents) owe you, the customer, the following duties:

- The duty to provide brokerage services to you fairly and honestly.
- The duty to exercise reasonable skill and care in providing brokerage services to you.
- The duty to provide you with accurate information about market conditions with a reasonable time if you request it, unless disclosure of the information is prohibited by law.
- The duty to disclose to you in writing certain Material Adverse Facts about a property, unless disclosure of the information is prohibited by law.
- The duty to protect your confidentiality. Unless the law requires it, the Firm and its Agents will not disclose your confidential information or the confidential information to other parties.
- The duty to safeguard trust funds and other property held by the Firm or its Agents.
- The duty, when negotiating, to present contract proposals in an objective and unbiased manner and disclose the advantages and disadvantages of the proposals.

Please review this information carefully. An Agent of the Firm can answer your questions about brokerage services, but if you need legal advice, tax advice or a professional home inspection contact an attorney, tax advisor, or home inspector. This disclosure is required by section 452.135 of the Wisconsin statutes and is for information only. It is a plain-language summary of the duties owed to a customer under section 452.133 (1) of the Wisconsin statutes.

Confidentiality Notice to Customers

The Firm and its Agents will keep confidential any information given to the Firm and its Agents in confidence, or any information obtained by the Firm and its Agents that a reasonable person would want to be kept confidential, unless the information must be disclosed by law or you authorize the Firm to disclose particular information. The Firm and its Agents shall continue to keep the information confidential after the Firm is no longer providing brokerage services to you.

The following information is required to be disclosed by law:

1. Material Adverse Facts, as defined in section 452.01 (5g) of the Wisconsin Statutes.
2. Any facts known by the Firm or its Agents that contradict any information included in a written inspection report on the property or real estate that is the subject of the transaction.

To ensure that the Firm and its Agents are aware of what specific information you consider confidential, you may list that information below, or provide that information to the Firm and its Agents by other means. At a later time, you may also provide the Firm and its Agents with other information you consider to be confidential.

Confidential information: _____

Non-Confidential information: (The following information may be disclosed by the Firm and its Agents): _____

(Insert information you authorize to be disclosed, such as financial qualification information.)

Definition of Material Adverse Facts

A "Material Adverse Fact" is defined in Wis. Stat 452.01 (5g) as an Adverse Fact that a party indicates is of such significance, or that is generally recognized by a competent licensee as being of such significance to a reasonable party, that it affects or would affect the party's decision to enter into a contract or agreement concerning a transaction or affects or would affect the party's decision about the terms of such a contract or agreement.

An "Adverse" fact is defined in Wis. Stat. 452.01 (1e) as a condition or occurrence that a competent licensee generally recognizes will significantly and adversely affect the value of the property, significantly reduce the structural integrity of improvements to real estate, or present a significant health risk to occupants of the property; or information that indicates that a party to a transaction is not able to or does not intend to meet his or her obligations under a contract or agreement made concerning the transaction.

Sex Offender Registry

Notice: You may obtain information about the sex offender registry and persons registered with the registry by contacting the Wisconsin Department of Corrections on the Internet at <http://offender.doc.state.wi.us/public/>

No representation is made as to the legal validity of any provision or the adequacy of any provision in any specific transaction.

Copyright 2016 by Wisconsin REALTORS Association.

