

AVAILABLE FOR SALE OR LEASE

7828 WATERVILLE RD

SAN DIEGO, CA 92154

BROWN FIELD BUSINESS PARK

± 101,435 SF

FREE-STANDING CORPORATE HEADQUARTERS
MANUFACTURING | R&D | DISTRIBUTION BUILDING

LOCATED IN A
**FOREIGN-TRADE
ZONE**

Murphy **CBRE**
Development Company

BUILDING OVERVIEW

Building Description:	Corporate Headquarters Manufacturing R&D Distribution
Total Building Area:	± 101,435 SF
Total Land Area:	± 5.95 Acres
First Floor Warehouse:	± 77,519 SF
First Floor Office:	± 12,700 SF
Second Floor Office:	± 11,216 SF
Dock Doors:	12 (Expandable to 16)
Grade Level Doors:	2
Clear Height:	± 24'
Fire Protection:	ESFR
Electrical Service:	Up to 7,000 Amps, 277/480V
Backup Power:	55Kw Diesel Powered Emergency Generator
Elevator:	One (1) Kone 2,500lb capacity elevator
Truck Turning Radius:	Up to ±180'
Vehicle Parking:	195 Stalls (1.92/1,000)
Zoning:	IP-1-1 (City of San Diego)

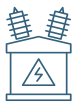


PLANNED RENOVATIONS

- » Addition of up to 7 Dock Loading Positions
- » New Office Finishes and Updated Restrooms
- » Asphalt/Concrete Repairs & Re-Stripe
- » New Interior & Exterior Paint
- » New HVAC
- » New Roof Coating
- » LED Lighting
- » Landscape Enhancement



Corporate
HQ Building



Up to 7,000 Amps,
277/480 V



Fenced
Secure Site



Excellent Circulation
with Drive-Around
Access



Trailer Parking



Prominent Freeway
Visibility



Walking Distance to
Public Transit



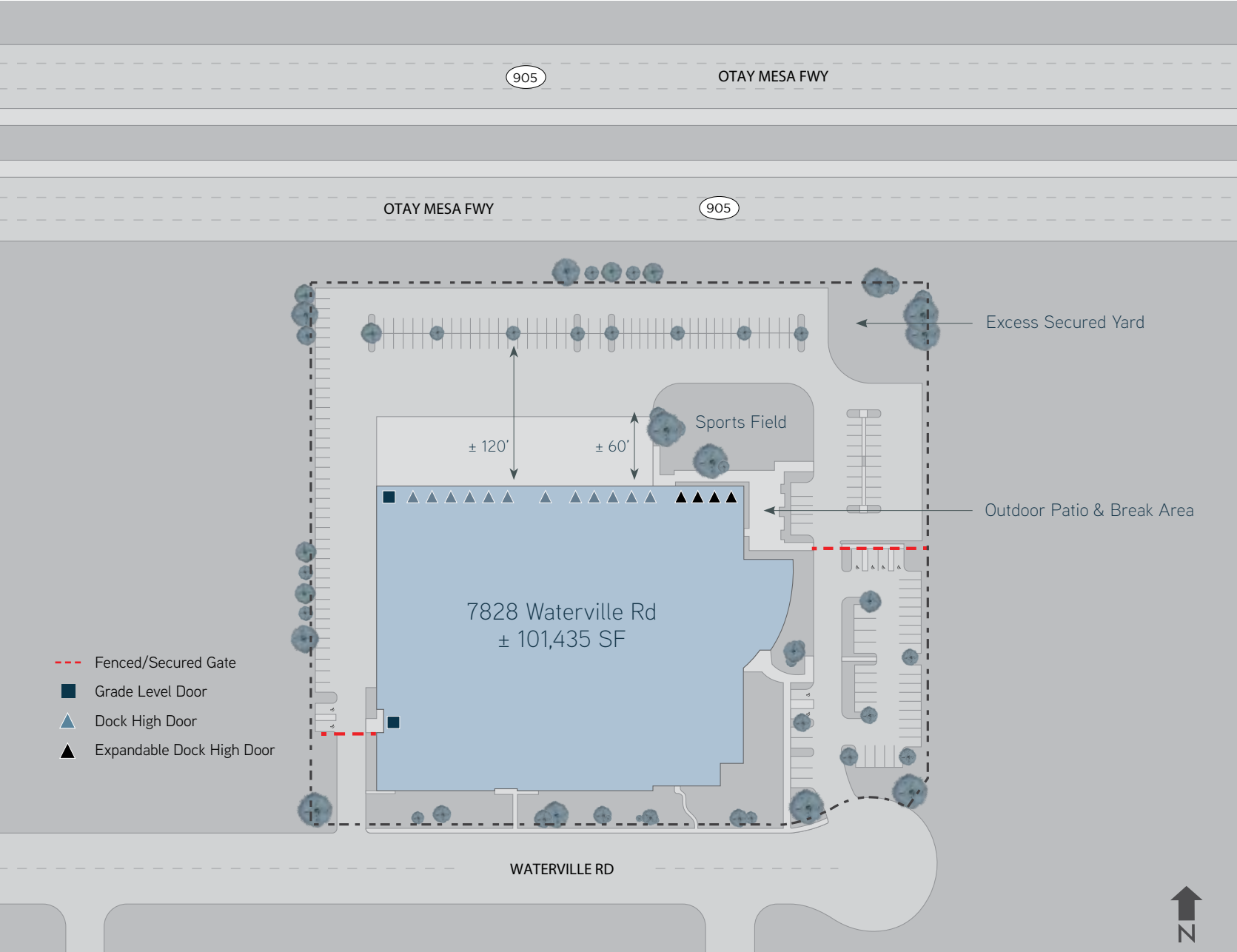
Natural Gas



Foreign-Trade
Zone

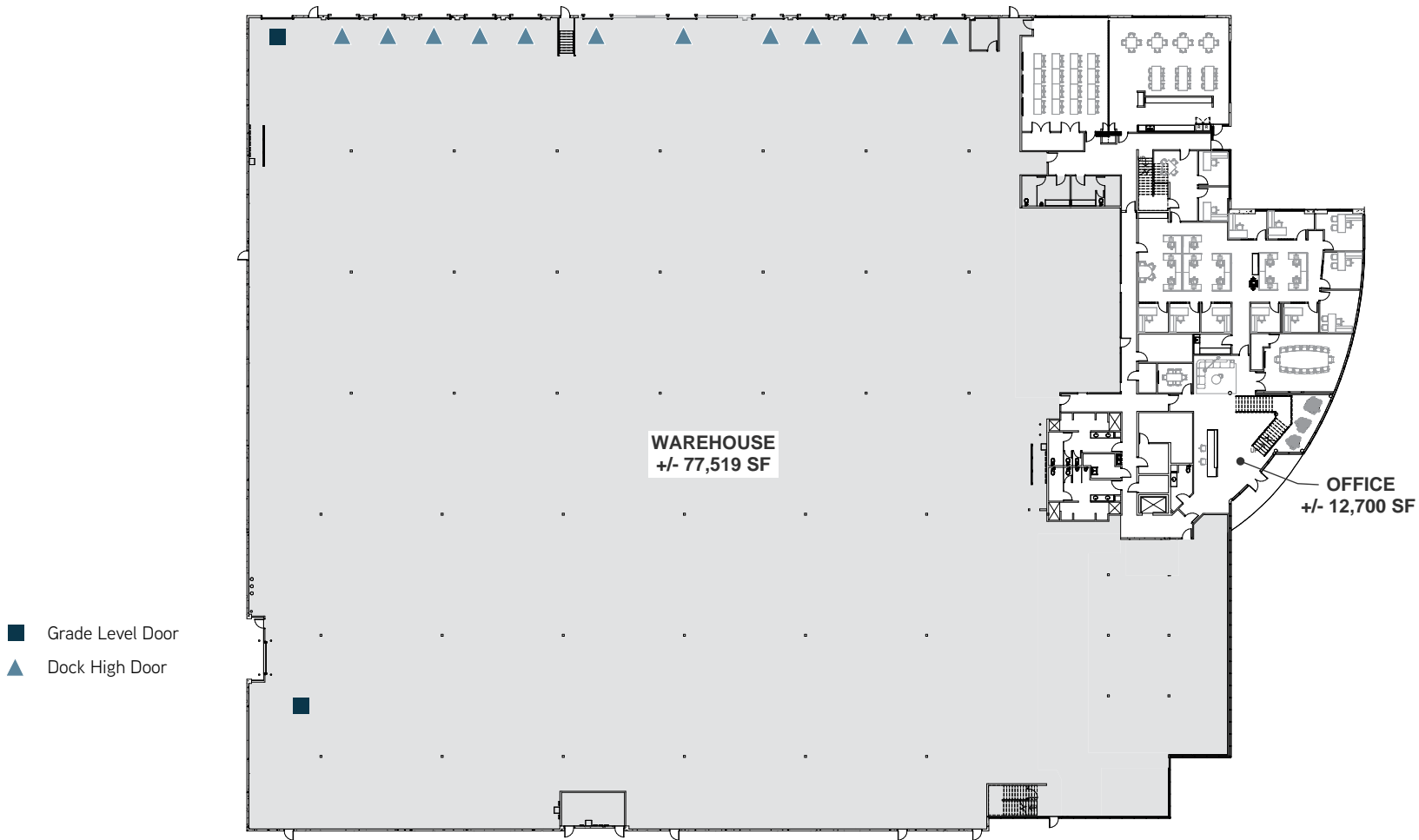


SITE PLAN



FULL FLOOR PLAN

- » First Floor Office Area: $\pm 12,700$ SF
- » Second Floor Office Area: $\pm 11,216$ SF
- » Warehouse Area: $\pm 77,519$ SF



FIRST FLOOR OFFICE PLAN

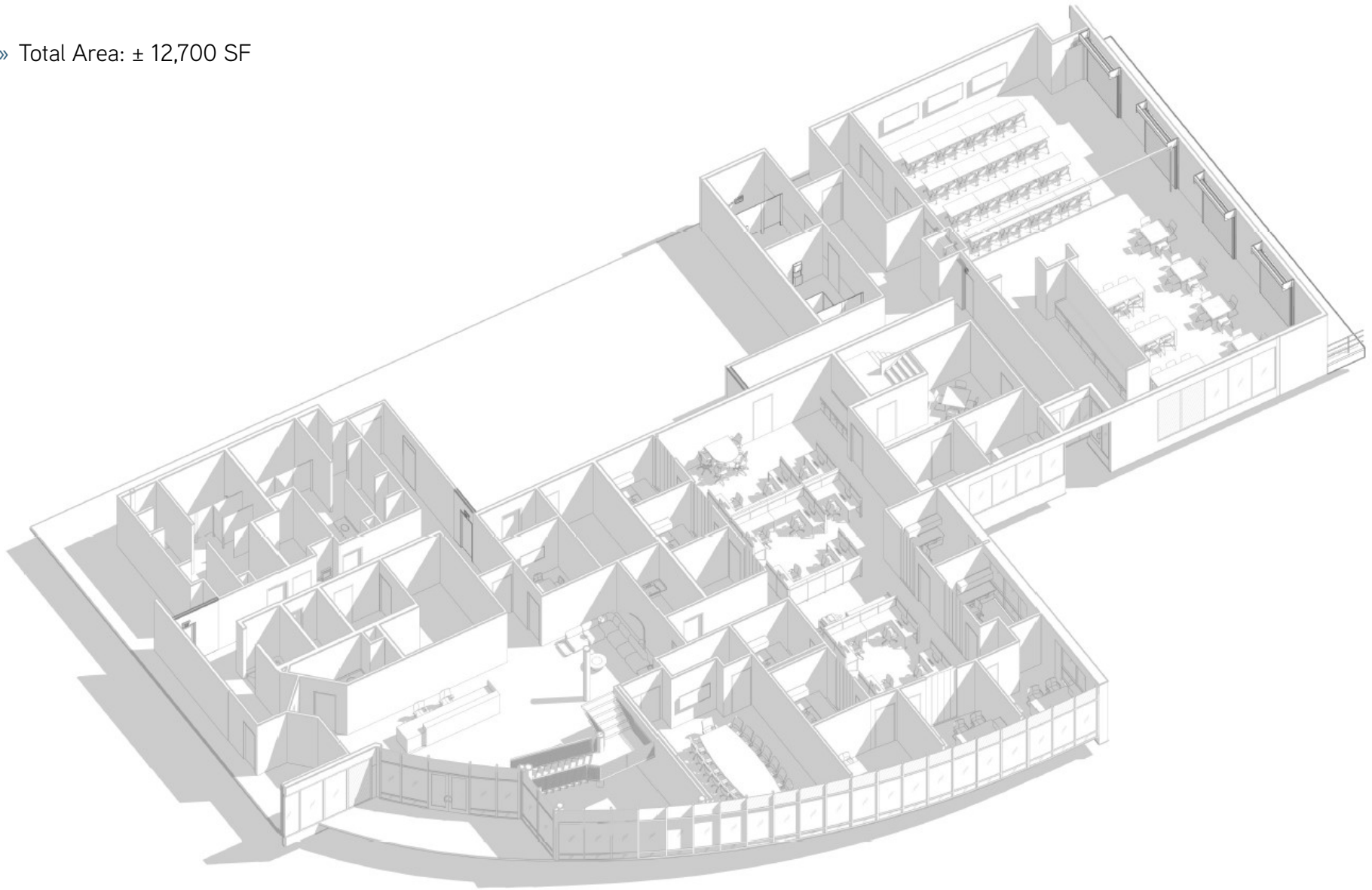
» Total Area: ± 12,700 SF



FIRST FLOOR OFFICE PLAN

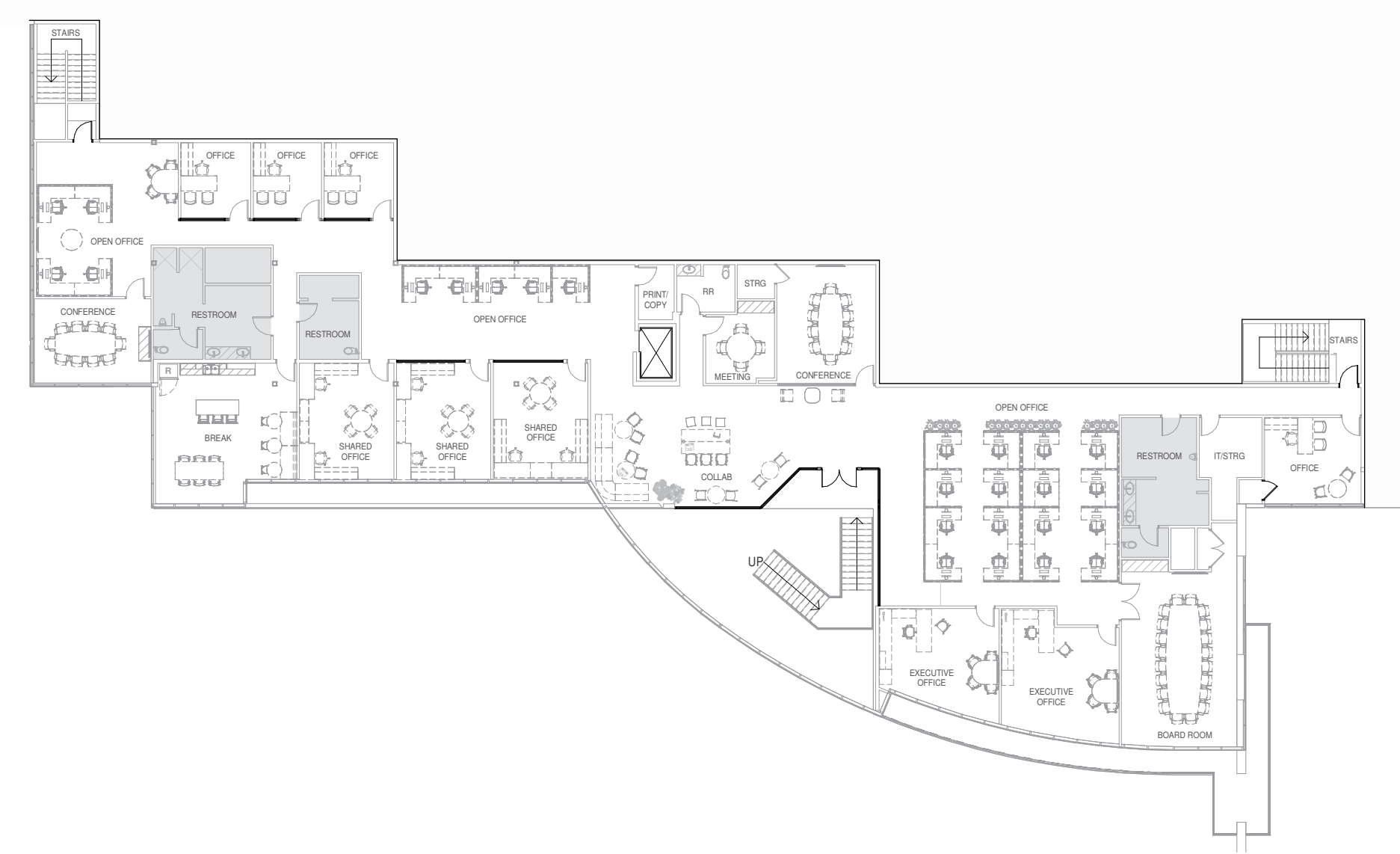
AXONOMETRIC VIEW

» Total Area: $\pm 12,700$ SF



SECOND FLOOR OFFICE PLAN

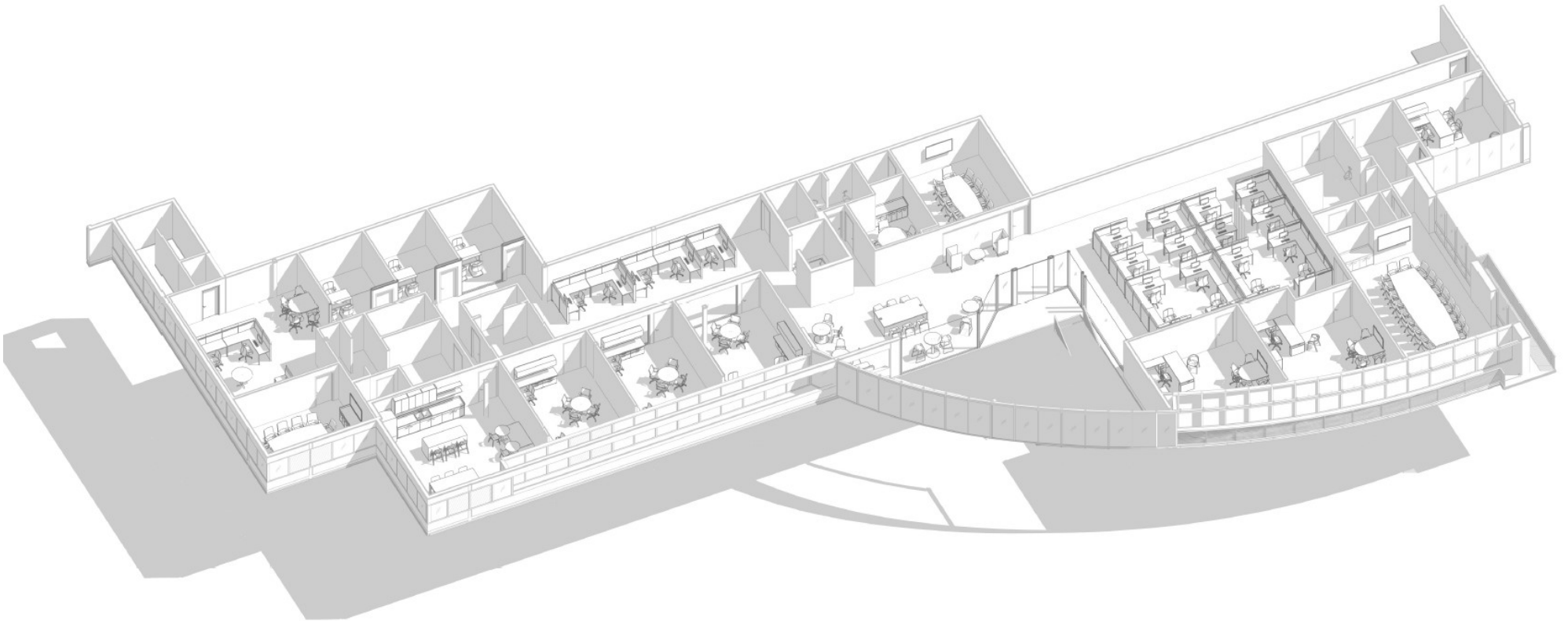
» Total Area: ± 11,216 SF



SECOND FLOOR OFFICE PLAN

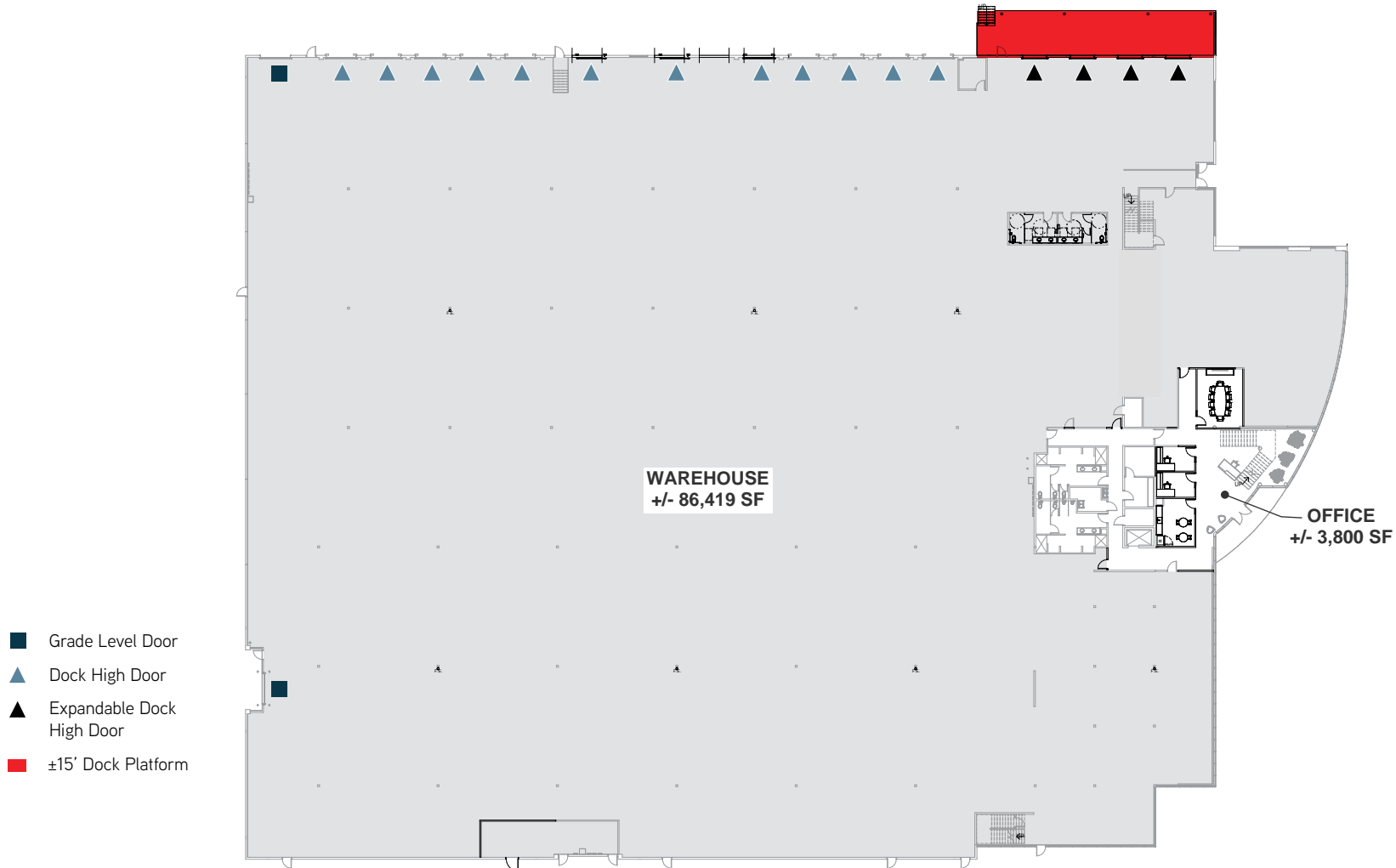
AXONOMETRIC VIEW

» Total Area: $\pm 11,216$ SF



FULL FLOOR PLAN (CONCEPTUAL)

- » First Floor Office Area: $\pm 3,800$ SF
- » Second Floor Office Area: $\pm 11,216$ SF
- » Warehouse Area: $\pm 86,419$ SF



FIRST FLOOR OFFICE PLAN (CONCEPTUAL)

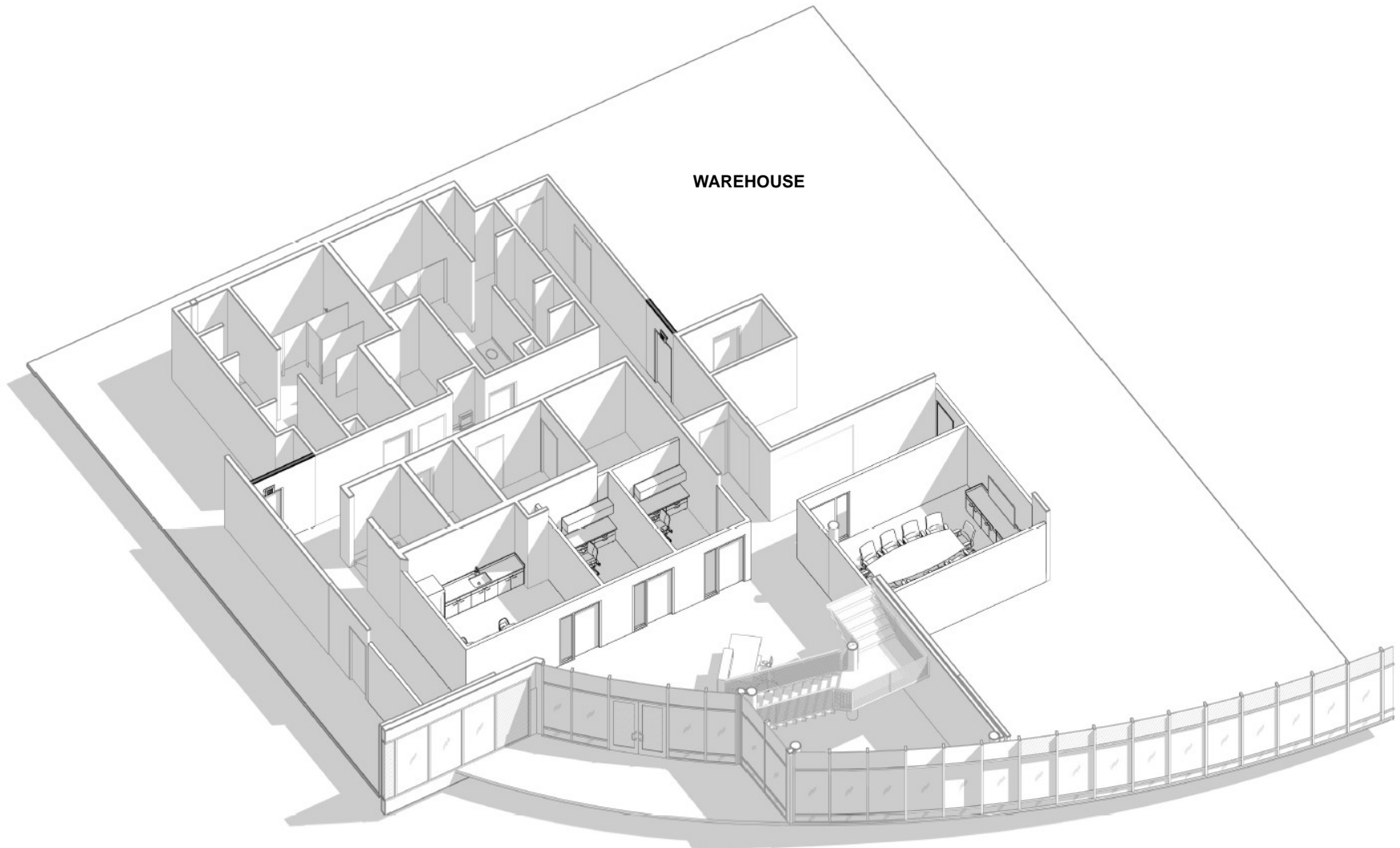
» Total Area: ± 3,800 SF



FIRST FLOOR OFFICE PLAN (CONCEPTUAL)

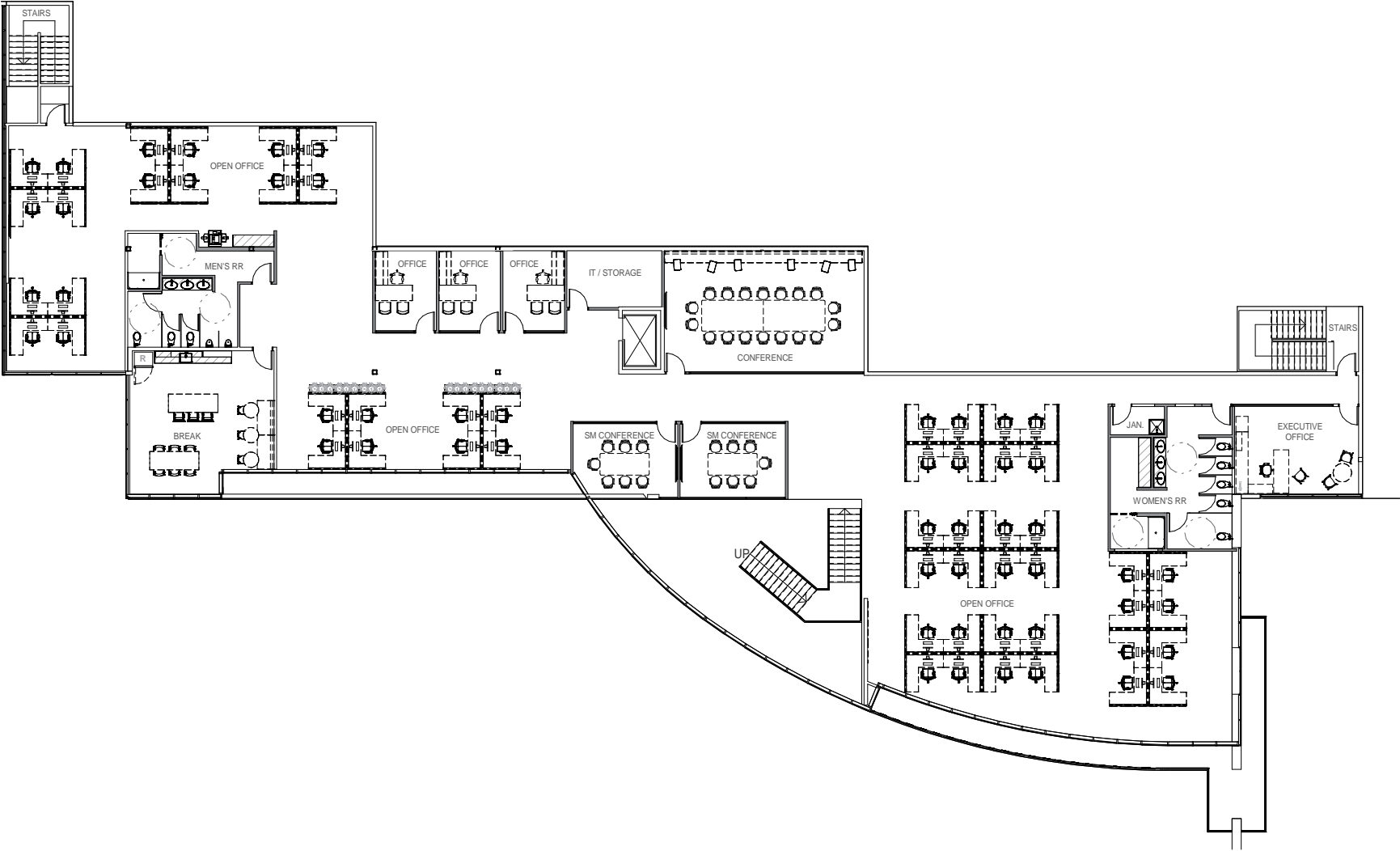
AXONOMETRIC VIEW

» Total Area: \pm 3,800 SF



SECOND FLOOR OFFICE PLAN (CONCEPTUAL)

» Total Area: ± 11,216 SF



SECOND FLOOR OFFICE PLAN (CONCEPTUAL)

AXONOMETRIC VIEW

» Total Area: \pm 11,216 SF






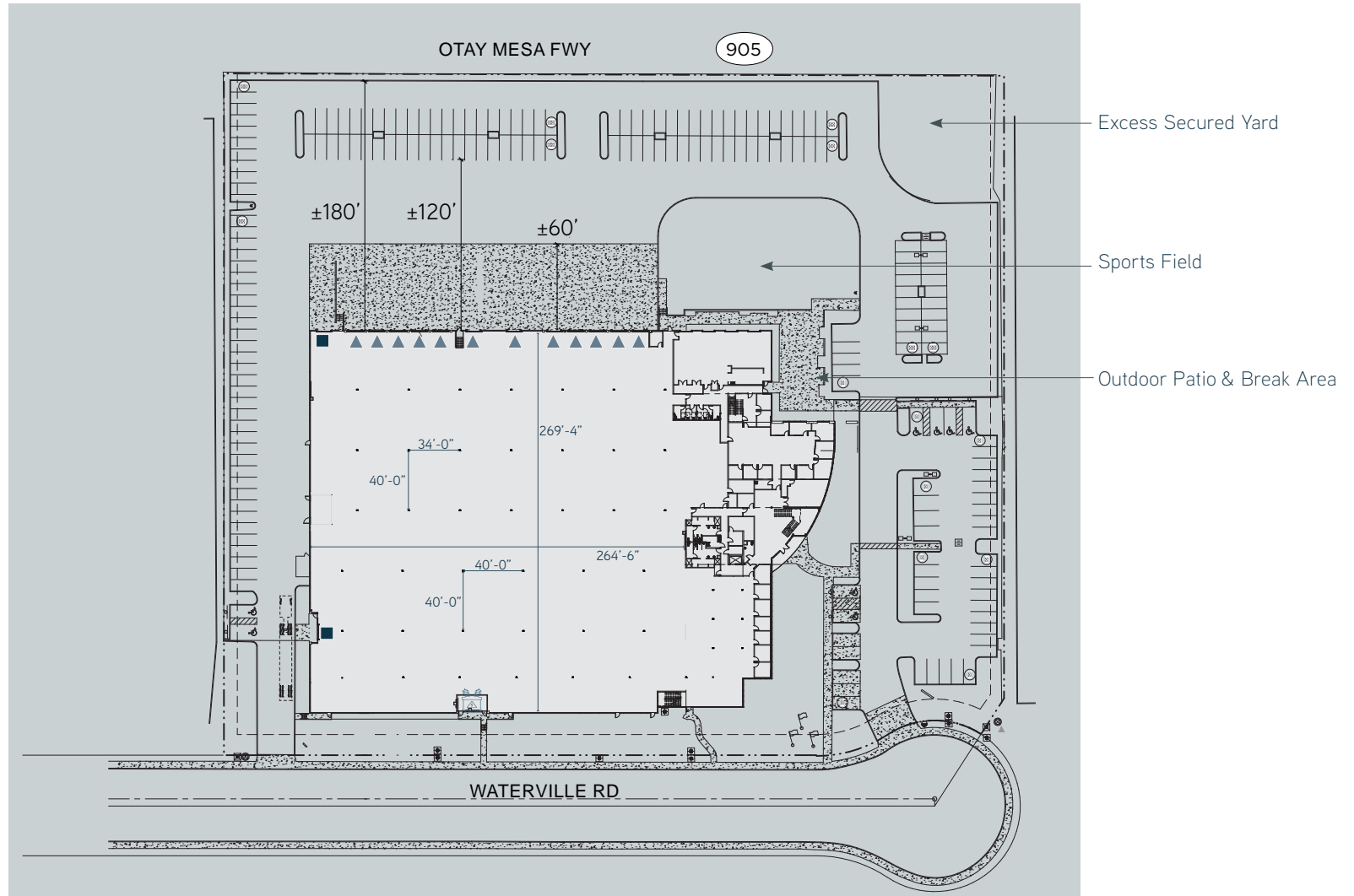


SITE PLAN

SCENARIO 1 MANUFACTURING | R&D

- » Vehicle Parking: 195 Stalls (1.92/1,000)
- » Dock Doors: 12
- » Grade Level: 2

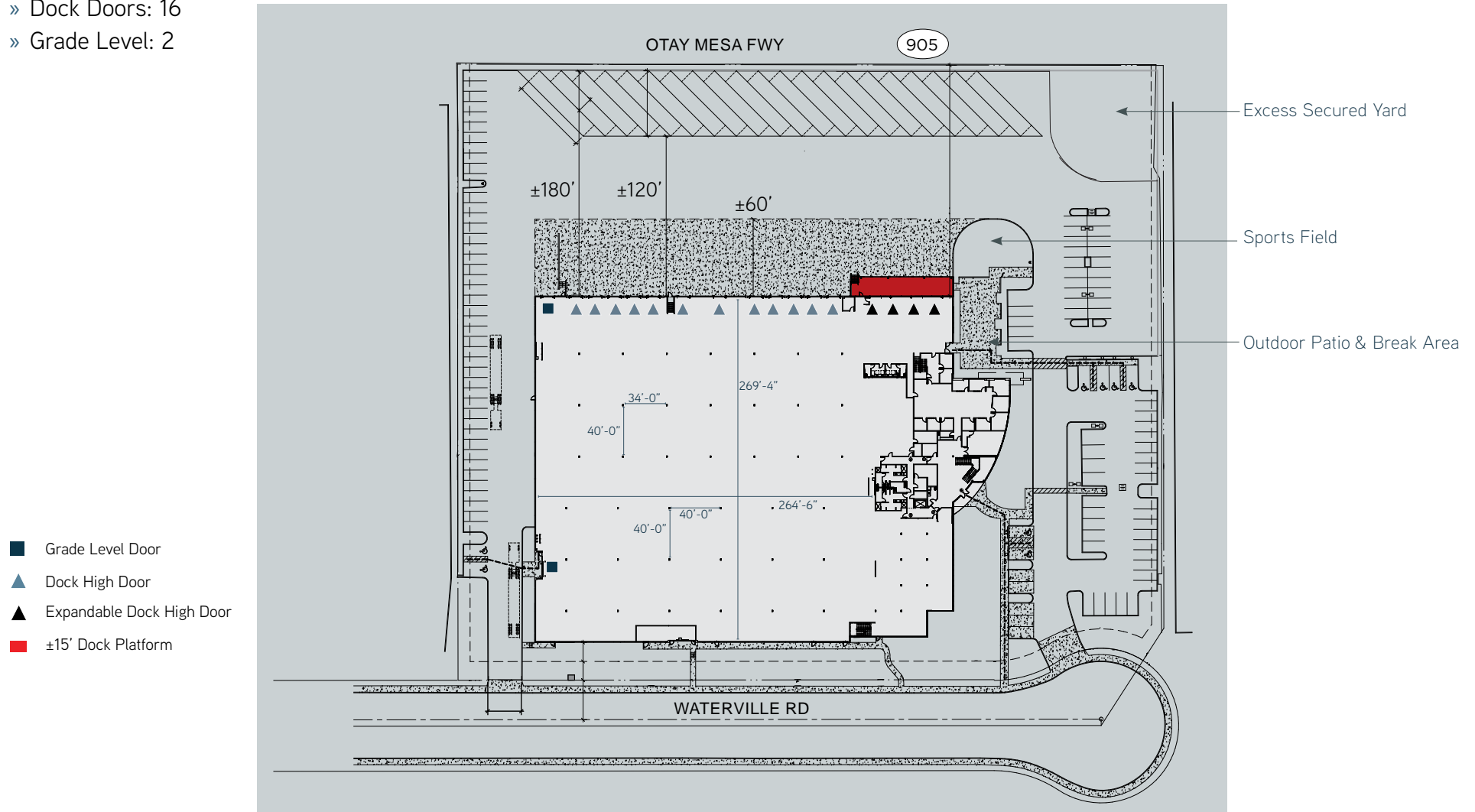
-  Up to 7,000 Amps
-  Grade Level Door
-  Dock High Door



SITE PLAN

SCENARIO 2 DISTRIBUTION WITH TRAILER PARKING

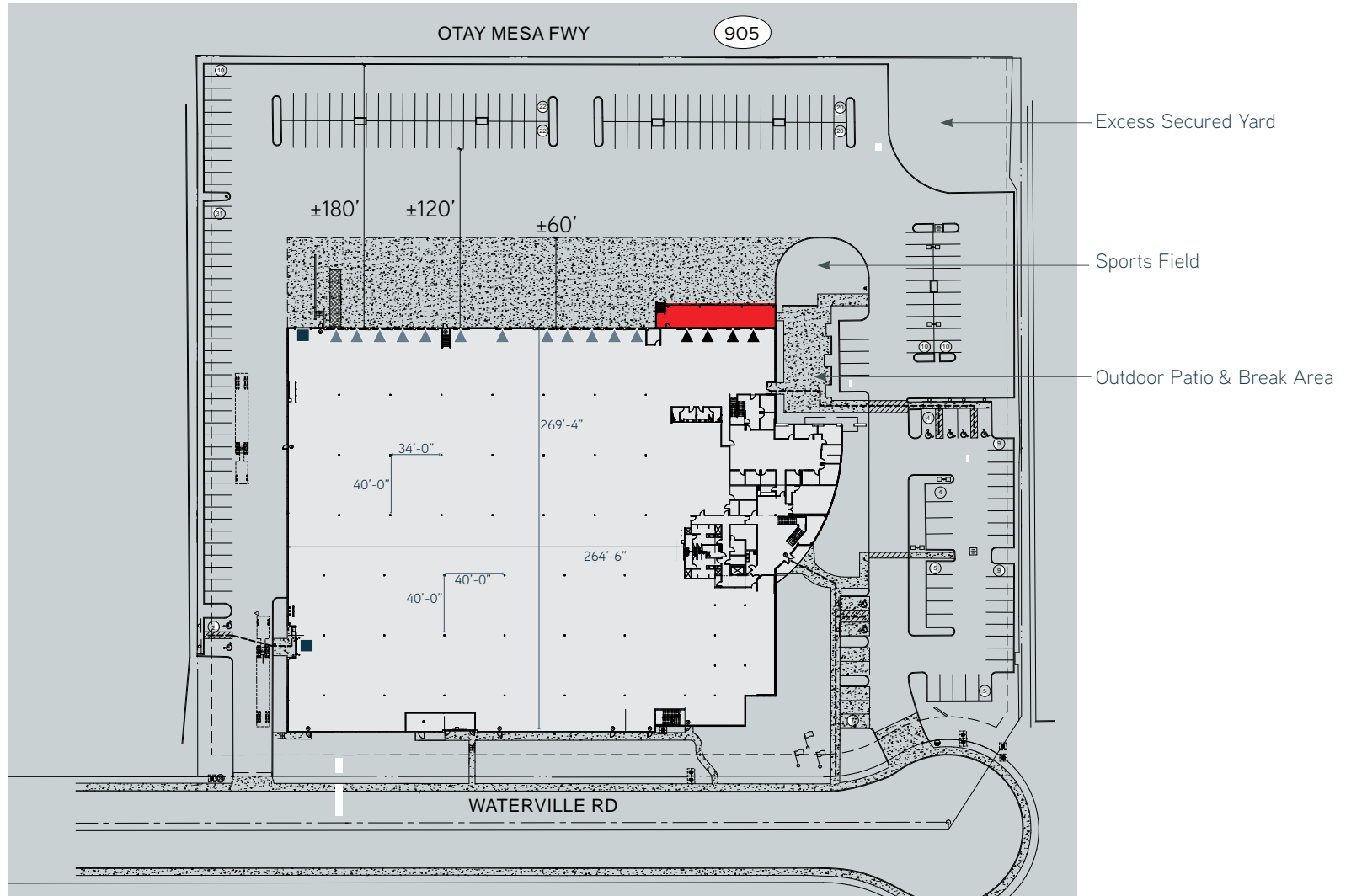
- » Vehicle Parking: 111 Stalls (1.10/1,000)
- » Trailer Parking: 21 Stalls
- » Dock Doors: 16
- » Grade Level: 2



SITE PLAN

SCENARIO 3 DISTRIBUTION WITH PARKING

- » Vehicle Parking: 195 Stalls (1.92/1,000)
- » Dock Doors: 16
- » Grade Level: 2



LOCATION MAP

- COUNTY/CITY BORDER
- FREEWAY
- FREEWAY ON/OFF RAMP
- LOCATION



CORPORATE NEIGHBORS



BROWN FIELD BUSINESS PARK

ADVANTAGES



122-Acre Master
Planned Industrial Park



Walking Distance
to Public Transit



Minutes to New Supporting
Residential Development



Central Otay Mesa Location
Avoids Border Congestion



Foreign-Trade Zone



Proximity to SR-905 at
Britannia Blvd.



Well-Maintained First-Class
Business Park Environment



Prominent Existing
Corporate Tenant Base





BROWN FIELD AIRPORT

OTAY MESA

ADVANTAGES



Best Otay Mesa location one block to SR-905 at Britannia Blvd. interchange providing immediate connections to I-805, I-5 and SR-125



One-mile to Cross Border Terminal ("CBX") with direct connection to Tijuana International Airport



Ample South County and Tijuana labor supply supporting warehouse and manufacturing operations



New Otay Mesa residential development to support growing employment base



Expanding decision-maker housing development in the nearby communities of Eastlake and Otay Ranch



Brown Field Airport redevelopment underway creating new jet fixed based operations, T-hangers, heliport, commercial, hotel and restaurant space.



Otay Mesa Port of Entry I handles \$51B of imports and exports with 1B trucks annually



Otay Mesa Port of Entry II, a \$1.2B project estimated to open in 2026

7828 WATERVILLE RD

SAN DIEGO, CA 92154

FREE-STANDING CORPORATE HEADQUARTERS
MANUFACTURING | R&D | DISTRIBUTION BUILDING

BROWN FIELD BUSINESS PARK



**FOR MORE INFORMATION,
PLEASE CONTACT:**

ERIK PARKER

First Vice President
Lic. 01315045
T +1 619 696 8330
erik.parker@cbre.com

BILL DOLAN

Senior Vice President
Lic. 01188240
T 858 546 4678
bill.dolan@cbre.com

EVAN KNUDSON

First Vice President
Lic. 01846995
T 619 696 8383
evan.knudson@cbre.com

© 2025 CBRE, Inc. All rights reserved. This information has been obtained from sources believed reliable but has not been verified for accuracy or completeness. CBRE, Inc. makes no guarantee, representation or warranty and accepts no responsibility or liability as to the accuracy, completeness, or reliability of the information contained herein. You should conduct a careful, independent investigation of the property and verify all information. Any reliance on this information is solely at your own risk. CBRE and the CBRE logo are service marks of CBRE, Inc. All other marks displayed on this document are the property of their respective owners, and the use of such marks does not imply any affiliation with or endorsement of CBRE. Photos herein are the property of their respective owners. Use of these images without the express written consent of the owner is prohibited.

Murphy
Development Company

CBRE