



“Step into the new Millennium”

20 Ash Street & 225 Washington Street, Conshohocken, PA



CONSHOHOCKEN'S PREMIER CONNECTED CAMPUS

Unleash your potential and step into a new tomorrow where modernity merges with nature, inviting you to experience the ultimate in productivity, well-being, and connectivity. Millennium boasts the perfect combination of outdoor greenspaces, contemporary design, and central convenience at Conshohocken's premiere office campus.

- Brand new amenity center including on-site fitness center, golf simulator, games, and Grab-and-Go food market
- The most greenspace in Conshohocken, with new outdoor meeting spaces along the Schuylkill River and walking trail
- Newly renovated common areas
- Unique, creative spaces with high ceilings
- Expansive window line providing ample natural light
- Walkable to Conshohocken amenities
- Well-capitalized on-site ownership
- Walkable train access
- Hotel on-site
- Helipad on-site
- On-site covered parking
- Building signage opportunities
- Over 7,000 existing, under construction, and planned surrounding apartment units



M
MILLENNIUM
Conshohocken

55,000 SF

M
MILLENNIUM
Conshohocken

70,000 SF



20 Ash Street, Conshohocken, PA

55,000 SF
of newly renovated class A office space
premier connected campus

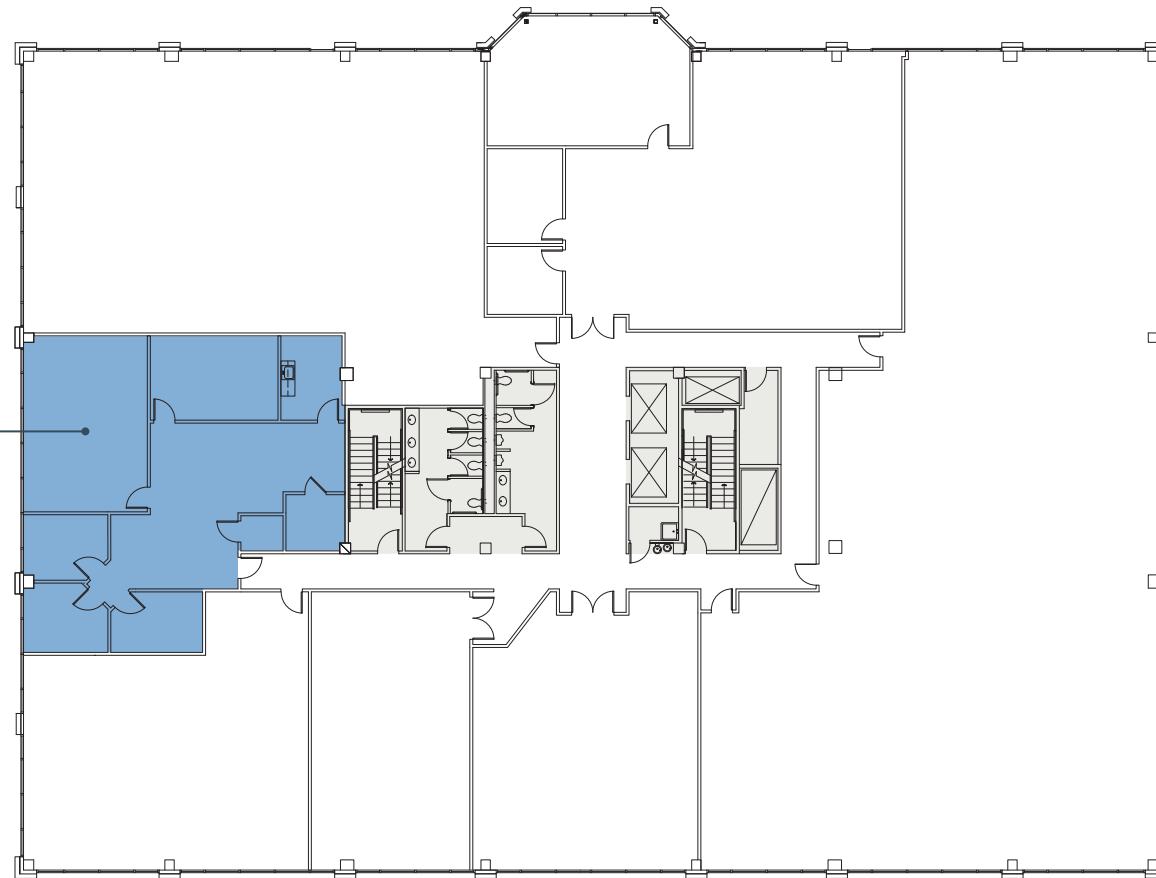
Availabilities

2nd floor **6,363 SF**

2nd floor **6,600 SF**

3rd floor **2,213 SF**

2,213 SF



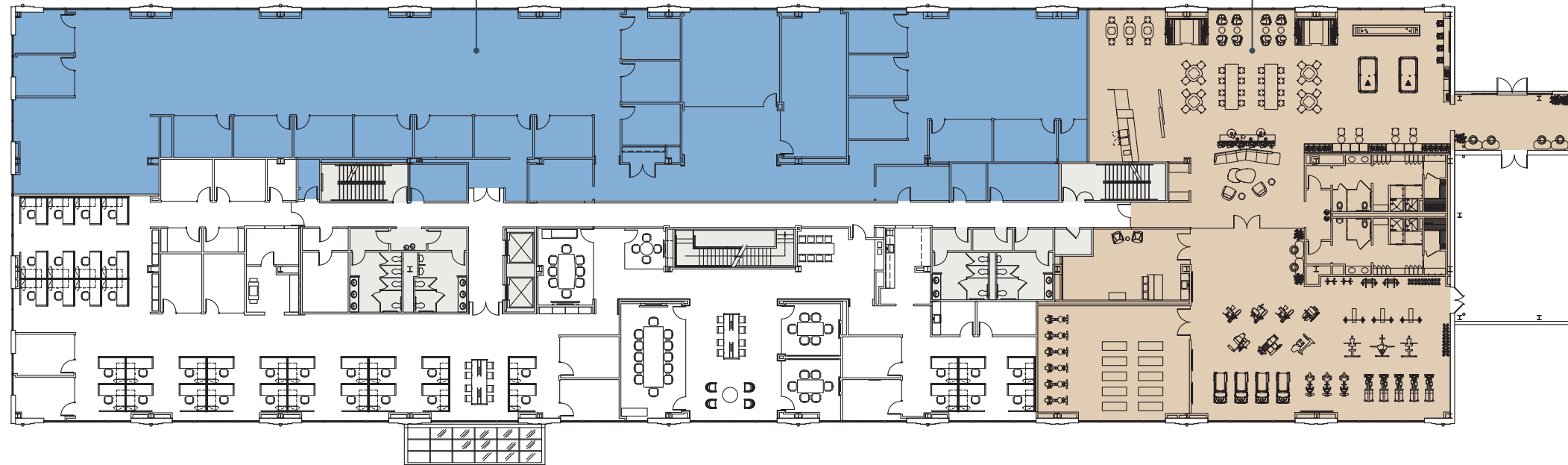
3RD FLOOR



MI

12,000 SF

6,363 SF



Newly constructed
site fitness center
and-go food market
in Conshohocken
along the Schuylkill

2ND FLOOR

AMENITY CENTER

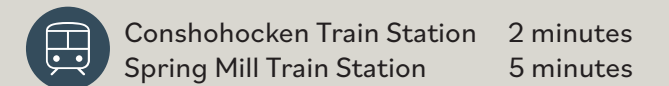
THE MOST CONNECTED CAMPUS IN CONSHY

With walkable train access and over 7,000 existing, under construction, and planned surrounding apartment units drawing top talent, Millennium boasts central convenience as Conshohocken's premiere office campus.

Hover over amenity below to view location on map



Commuter access





CONTACT US

Doug Newbert
+1 610 249 2273
doug.newbert@jll.com

Mike MacCrorry
+1 610 249 2270
mike.maccrorry@jll.com

Jones Lang LaSalle Brokerage, Inc.
550 E. Swedesford Road, Suite 260
Wayne, PA 19087
+1 610 249 2255

