

10
CLAY STREET

FOR LEASE
±4,624 SF

Jack London Square, Oakland

Glass-Lined Waterfront Office

Adjacent to Ferry Terminal



Brendan Heafey
510.625.1500

brendan.heafey@transwestern.com

LIC: 01342351

Josh Crawford
510.590.3021

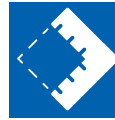
josh.crawford@transwestern.com

LIC: 02003851

10 CLAY ST



HIGHLIGHTS



Second floor, $\pm 4,624$ SF availability divisible to 2,857 and 1,767 SF



\$3.75 PSF per month Full Service



Class A waterfront office space, just steps from the Oakland Jack London Square Ferry Terminal



Corner glass-lined suite provides generous natural light



Walking distance to numerous amenities including Rosenblum Cellars, Lungomare Café, Yoshi's, Il Plank, Forge, Subway and more



Affordable monthly and hourly parking just one block away



Free B Shuttle to BART and Downtown Oakland every 10 minutes



Iconic architecture built in 2008

10 CLAY ST



SEAWOLF

BLUE BOTTLE COFFEE

OAKLAND GRILL

FREE B SHUTTLE

BUTTERCUP

EVERETT & JONES

HOME OF CHICKEN & WAFFLES

REGAL CINEMA

YOSHI'S

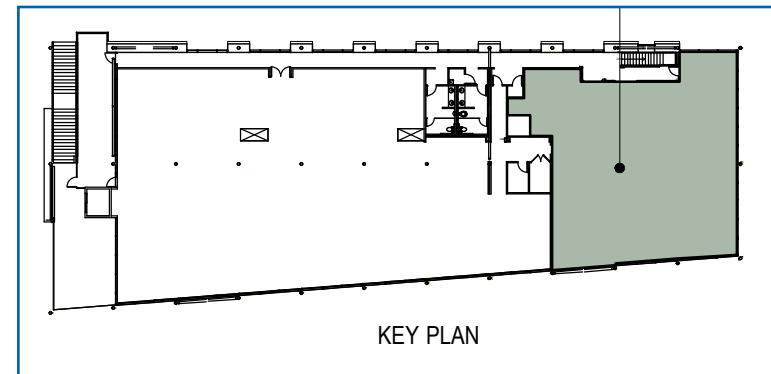
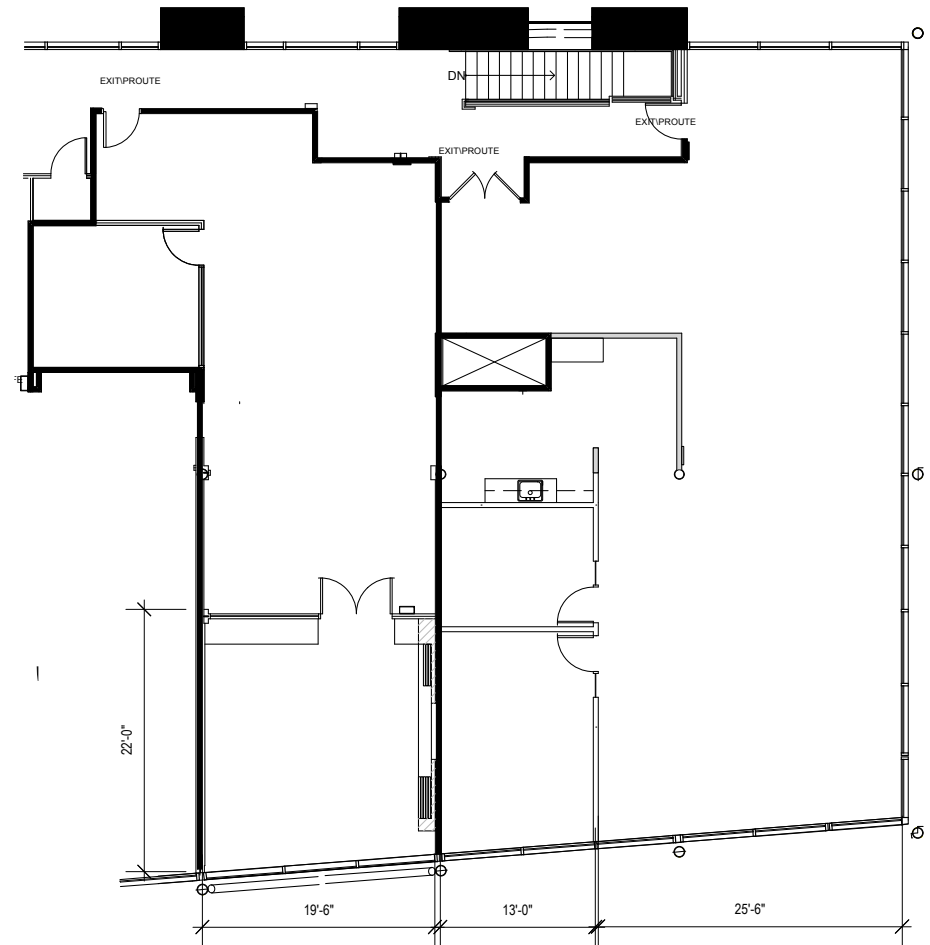
BED BATH & BEYOND

COST PLUS WORLD MARKET



10 CLAY ST

Jack London Square
Waterfront Hotel
Plank
Scott's Seafood
Kincaid's
Forge
Lungomare
Baia Pasta
Heinold's Saloon
Ben & Jerry's
Subway
Haven
Bocanova
Jack's Oyster Bar



T TRANSWESTERN®

Brendan Heafey

510.625.1500

brendan.heafey@transwestern.com

LIC: 01342351

Josh Crawford

510.590.3021

josh.crawford@transwestern.com

LIC: 02003851