

FOR SALE

1555 Laurel Bay Lane

SAN DIEGO, CA 92154



18,832 SF AVAILABLE

\$5,649,000.00 | \$300.00 PSF



PROPERTY INFORMATION



18,832 SF

TOTAL BUILDING SIZE

25'

CLEAR HEIGHT

2.50/100

PARKING

\$5,649,000.00 | \$300.00 PSF

PRICE

5,500 SF

MEZZANINE APPROX. SIZE

8

CONDO UNITS

1,200 Amps | 208/120 Volts

UPGRADABLE TO
4,000 Amps | 480 Volts

GAS

CANNABIS CUP 8-MULTIPLE

CANNABIS TYPE LICENSES

* Grandfathered SDG&E 45KW PV Solar Rate

PROPERTY SITE PLAN

APPROACH ROAD

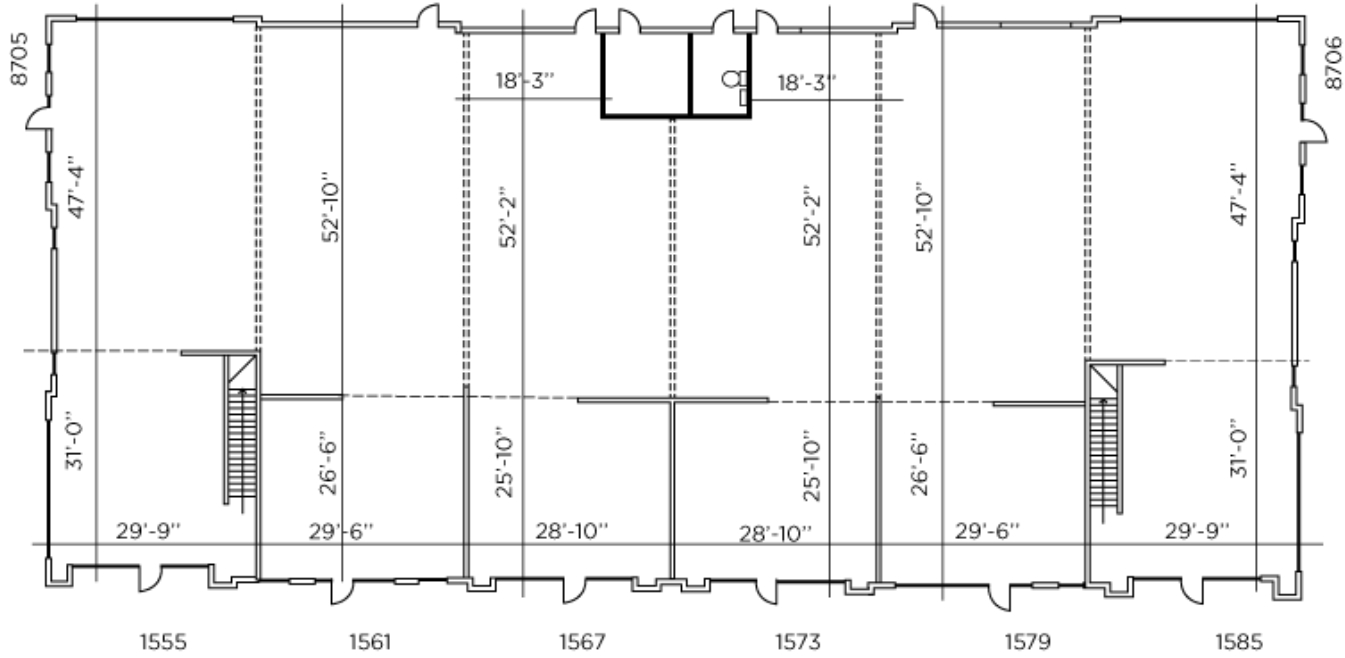
AIR WING ROAD

PIPER RANCH ROAD

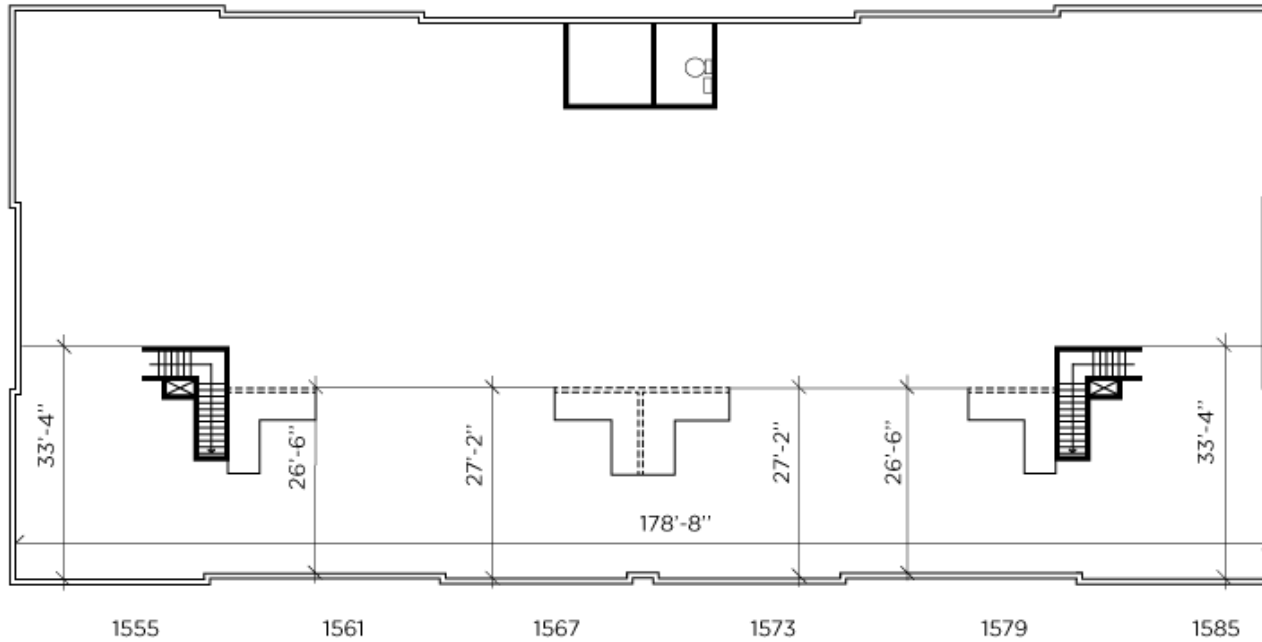


FLOOR PLAN

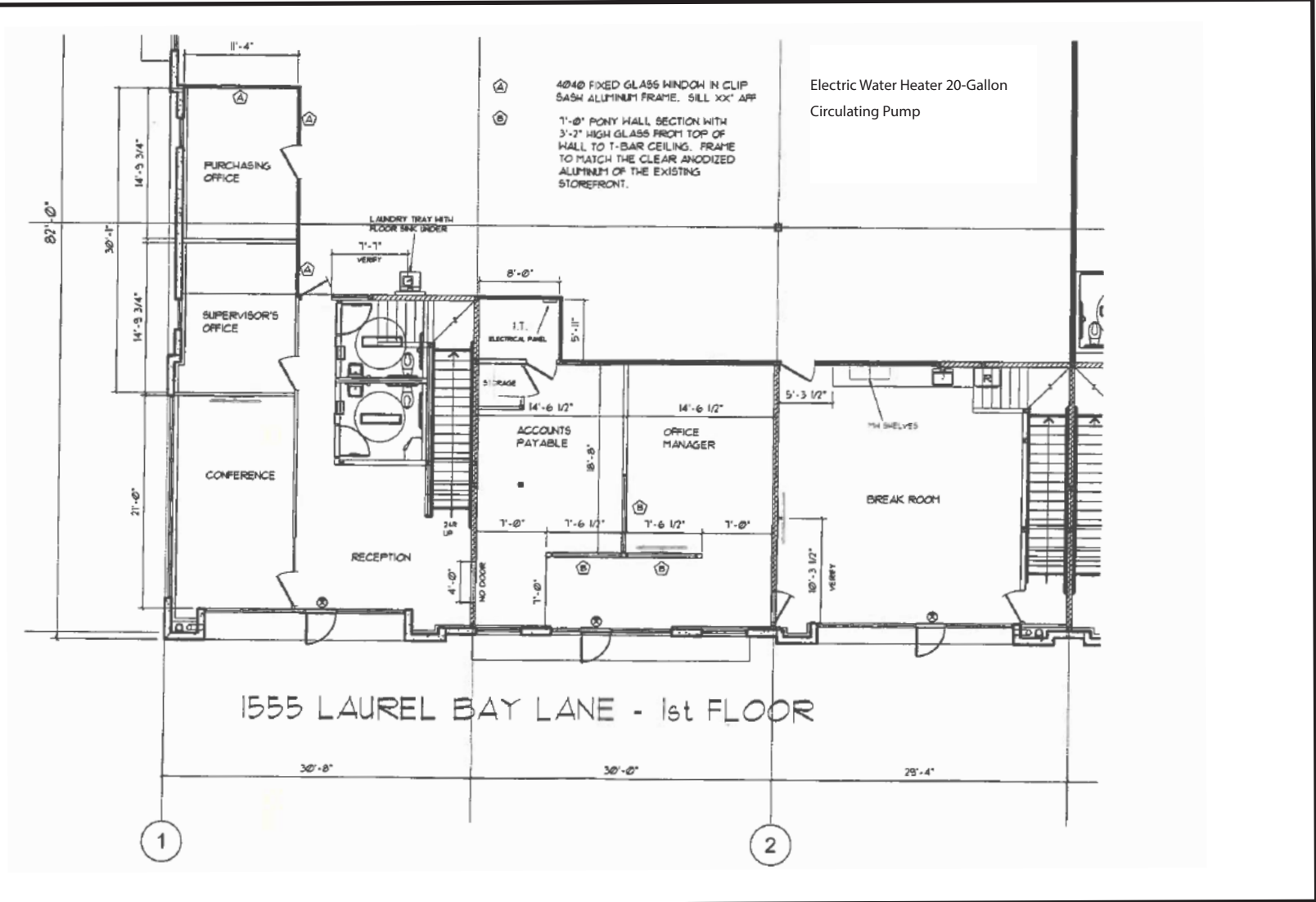
FIRST FLOOR



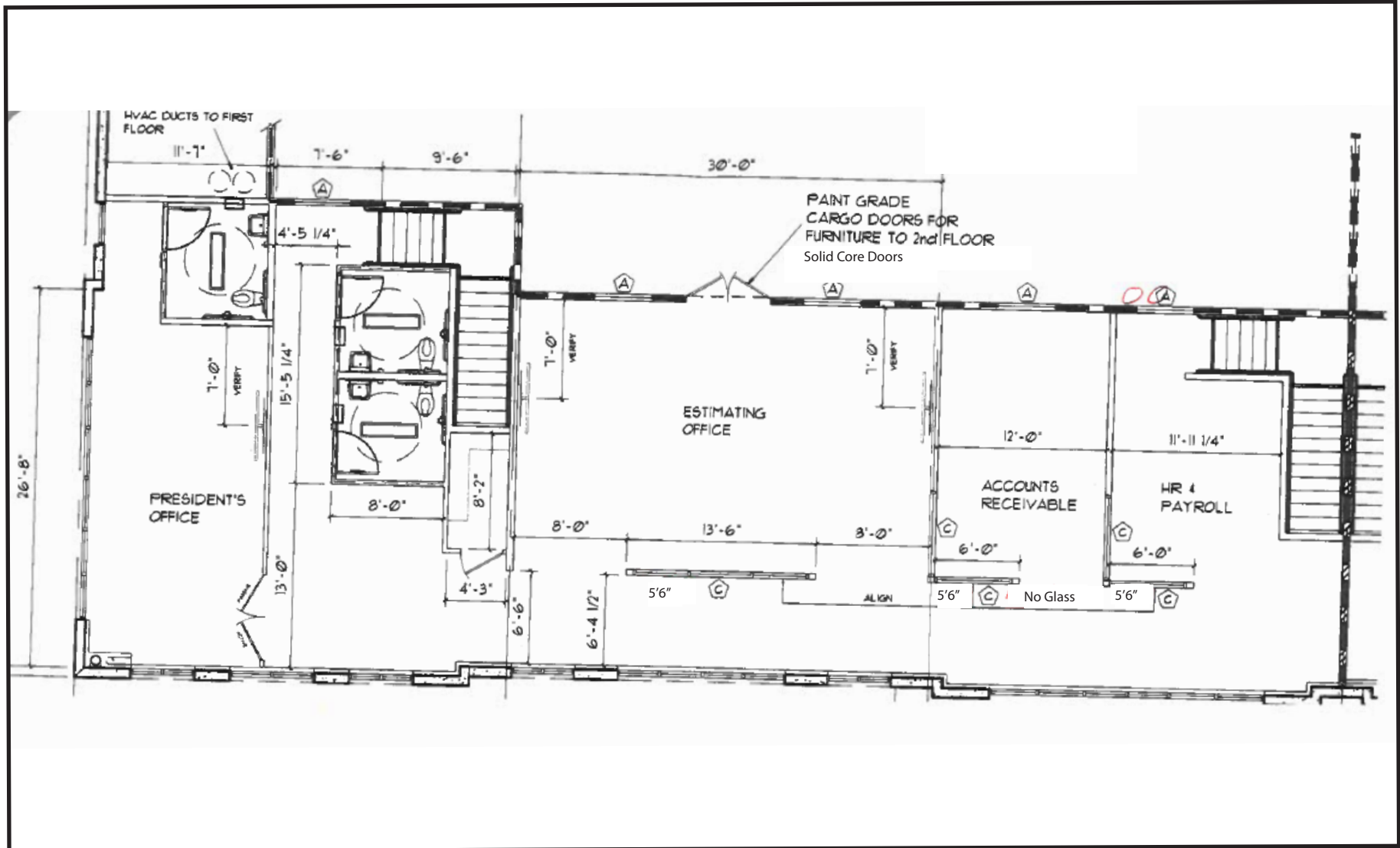
SECOND FLOOR



FLOOR PLAN



FLOOR PLAN





For more information, please contact:

Regan Tully

Managing Director

Direct: +1 619 661 0656

Mobile: +1 619 520 2424

Fax: +1 619 661 1869

regan.tully@cushwake.com

CA License #00712457

Morrow Botros

Associate Broker

Direct: +1 619 614 1383

Mobile: +1 760 208 8679

Fax: +1 858 452 3206

morrow.botros@cushwake.com

CA License #02196220

8780 Sherwood Terrace
San Diego, CA 92154
United States
+1 619 661 0656
cushmanwakefield.com