



±528 SF Dental/Medical Office Space For Lease

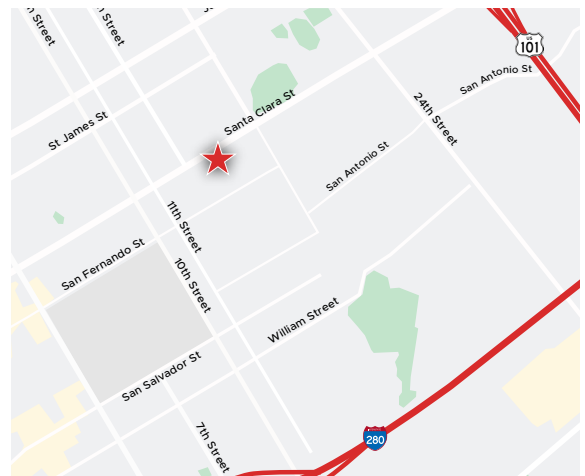
**660 E SANTA CLARA STREET
SAN JOSE, CA**

Available Space

- 660 E Santa Clara St - ±528 SF (Available Now)

Project Highlights

- Downtown Location
- Next to Valley Medical Health Hospital
- Newer Paint and Flooring
- AC and Heating, All Plumbing in Place and Operable
- Comcast Served
- \$3.55 Gross Monthly Rent (Electric & Janitorial Separate)



For information, please contact:

Gabe Regalado

Director

t 408-455-4913

gabe.regalado@nmrk.com

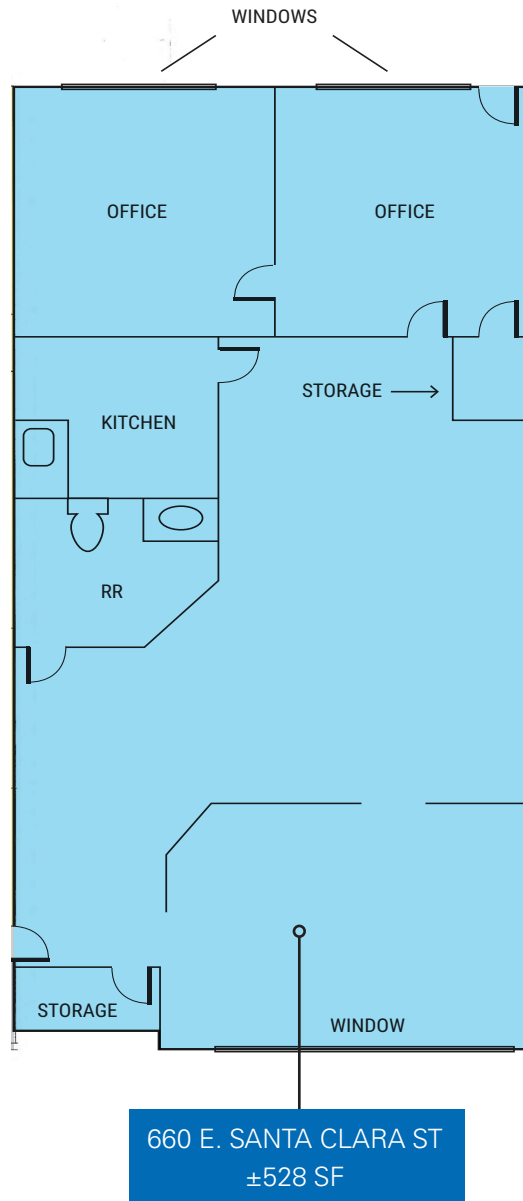
CA RE License #02008286

nmrk.com

NEWMARK

The distributor of this communication is performing acts for which a real estate license is required. The information contained herein has been obtained from sources deemed reliable but has not been verified and no guarantee, warranty or representation, either express or implied, is made with respect to such information. Terms of sale or lease and availability are subject to change or withdrawal without notice. 21-0777 • 10/24

Floor Plan



*This floor plan is not drawn to scale.

For information, please contact:

Gabe Regalado

Director

t 408-455-4913

gabe.regalado@nmrk.com

CA RE License #02008286

nmrk.com

NEWMARK

The distributor of this communication is performing acts for which a real estate license is required. The information contained herein has been obtained from sources deemed reliable but has not been verified and no guarantee, warranty or representation, either express or implied, is made with respect to such information. Terms of sale or lease and availability are subject to change or withdrawal without notice. 21-0777 • 10/24

Gallery

660 E. Santa Clara St, San Jose



For information, please contact:

Gabe Regalado

Director

t 408-455-4913

gabe.regalado@nmrk.com

CA RE License #02008286

nmrk.com

NEWMARK

The distributor of this communication is performing acts for which a real estate license is required. The information contained herein has been obtained from sources deemed reliable but has not been verified and no guarantee, warranty or representation, either express or implied, is made with respect to such information. Terms of sale or lease and availability are subject to change or withdrawal without notice. 21-0777 • 10/24