



# Colonial Corporate Center

800 Newtown Road  
Virginia Beach, VA

Recently updated office  
space available for lease



Accelerating success.

150 W Main St, Suite 1100  
Norfolk, VA 23510  
[colliers.com](http://colliers.com)

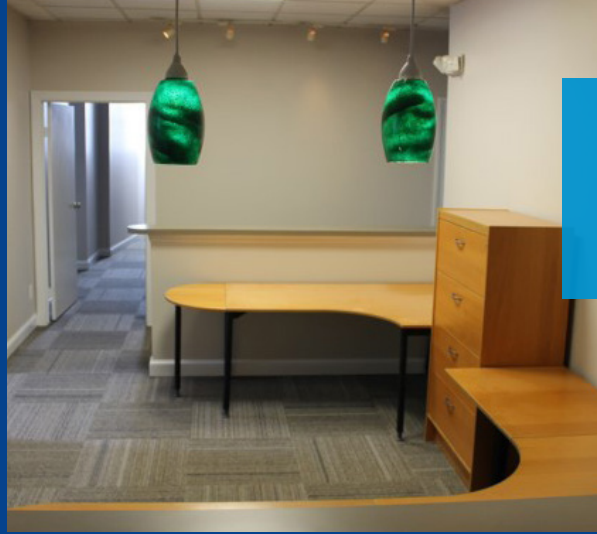
**Donald R. Crigger, CCIM**

Executive Vice President  
+1 757 228 1847  
[don.crigger@colliers.com](mailto:don.crigger@colliers.com)

**Brian Davidson**

Vice President  
+1 757 228 1809  
[brian.davidson@colliers.com](mailto:brian.davidson@colliers.com)

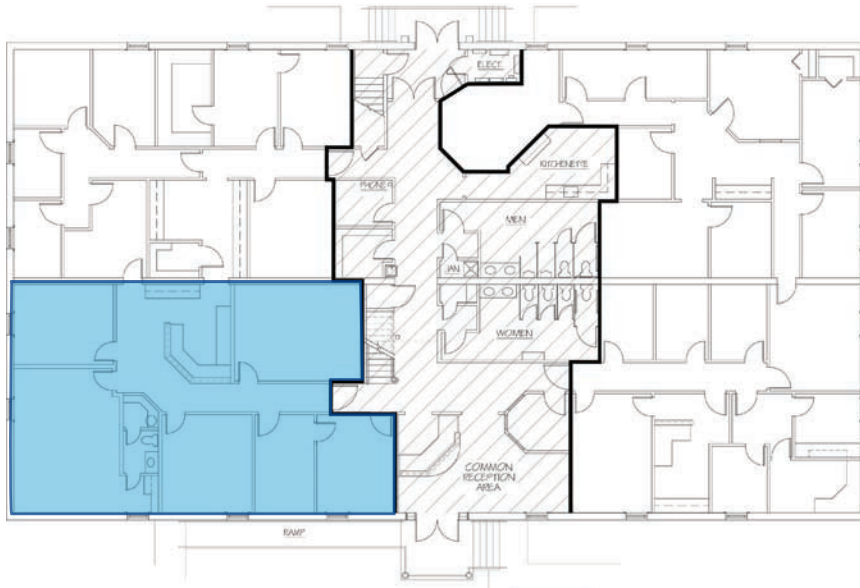
# Features



- 11,952 square foot, two-story office condominium located off of Newtown Road
- Central location within South Hampton Roads
- Especially convenient for all routes from Virginia Beach, Norfolk and Chesapeake
- Close proximity to I-264/I-64 interchange and numerous surrounding amenities
- Abundant free-surface parking available on site
- Significant Capital Improvements recently completed
- Large seminar room on the 2nd floor available for tenant use
- Up to 1,893 RSF available for lease
- Lease Rate: \$18.75/SF, Full Service

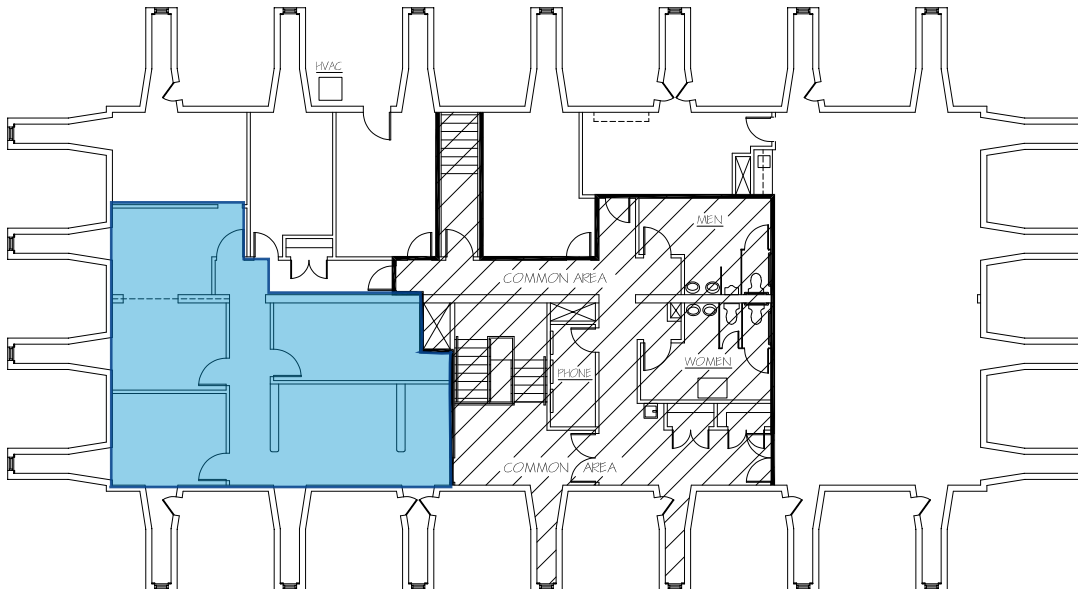
## 1st Floor

Available - Suite 100: 1,893 RSF



## 2nd Floor

Available - Suite 200: 1,157 RSF



# Floor Plans

Rental Rate

**\$18.75**

RSF, Full Service





150 West Main St, Suite 1100  
Norfolk, VA 23510  
colliers.com

**Donald R. Crigger, ccim**

Executive Vice President  
+1 757 228 1847  
don.crigger@colliers.com

**Brian Davidson**

Vice President  
+1 757 228 1809  
brian.davidson@colliers.com

