

2 A040 LIFE SAFETY PLAN SCALE: 1/8" = 1'-0"

**CODE LEGEND**

- 1 NUMBER OF OCCUPANTS EXITING FROM ANOTHER LEVEL
- 20 COMBINED NUMBER OF OCCUPANTS EXITING FROM SMALLER SPACE INTO LARGER SPACE
- 20 NUMBER OF OCCUPANTS EXITING FROM SPACE
- 20 NUMBER OF OCCUPANTS UTILIZING EXITING FROM SPACE
- ← INDICATES EGRESS PATH
- ⊙ INDICATES EGRESS EXIT

**CODE SUMMARY**

**APPLICABLE CODES**

- MINNESOTA STATE BUILDING CODE - 2020 EDITION
- MINNESOTA ACCESSIBILITY CODE - 2020 EDITION
- MINNESOTA ENERGY CODE - 2020 EDITION

**BUILDING INFORMATION**

- CONSTRUCTION TYPE: V-B - NON-SPRINKLED GROUP B
- OCCUPANCY TYPE: GROUP B
- BUILDING HEIGHT: 2 STORES, 40'-0"
- BUILDING AREA: PROPOSED 9000 SF, ALLOWED 4714 SF

**HEALTHSOURCE - TENANT INFORMATION**

- SQUARE FOOTAGE OF TENANT SPACE: 2,970 S.F.
- OCCUPANT LOAD: 2,970 / 150 = 20 OCCUPANTS
- NUMBER OF EXITS REQUIRED: 3
- NUMBER OF EXITS PROVIDED: 3
- MAXIMUM TRAVEL DISTANCE REQUIRED: 300 FEET
- MAXIMUM COMMON PATH OF TRAVEL: 100 FEET

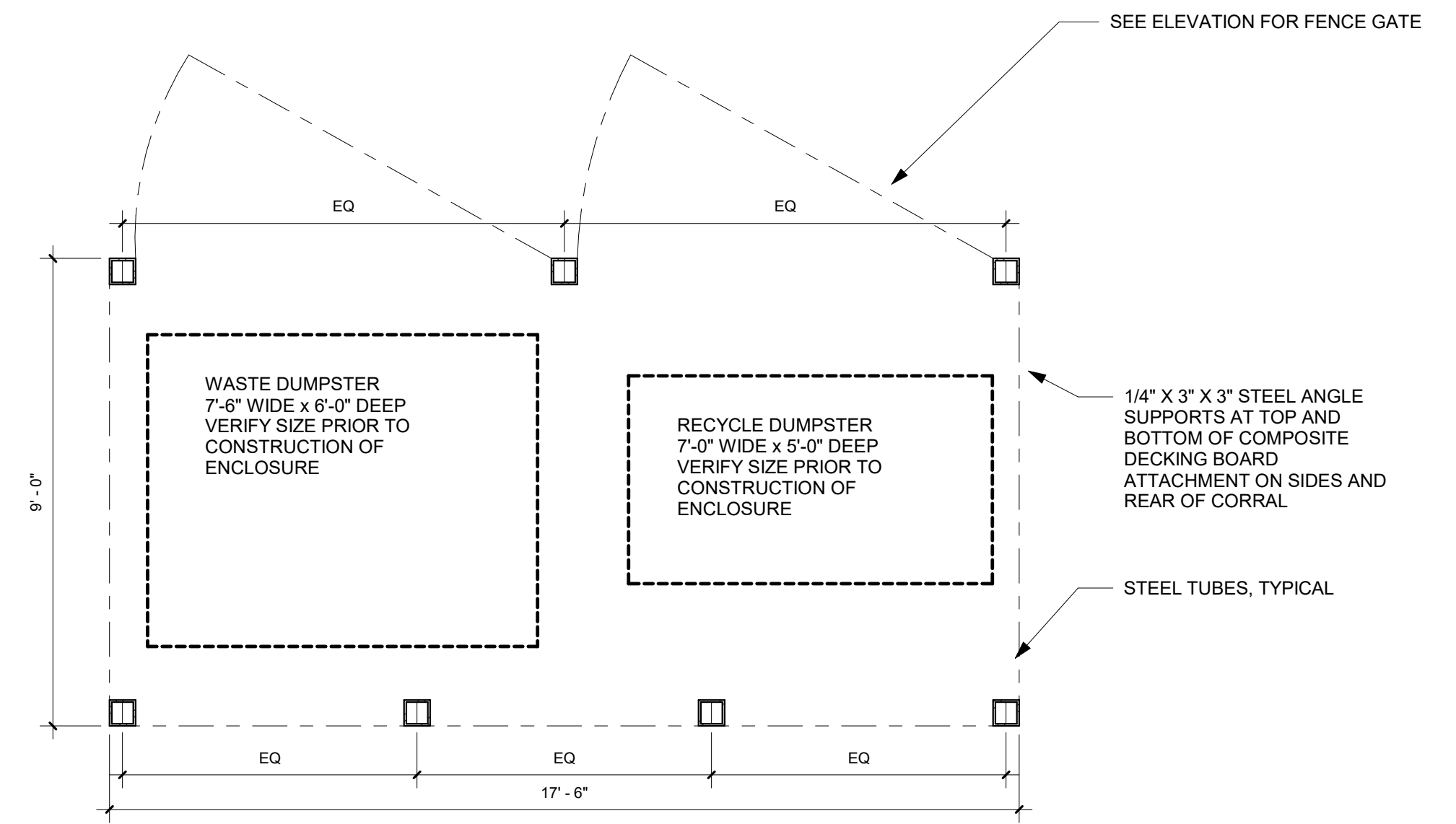
**HEALTHSOURCE - PLUMBING FIXTURES**

TOILETS: MALE - (1) REQUIRED, (1) COMMON AREA TOILETS PROVIDED; FEMALE - (1) REQUIRED, (1) COMMON AREA TOILETS PROVIDED

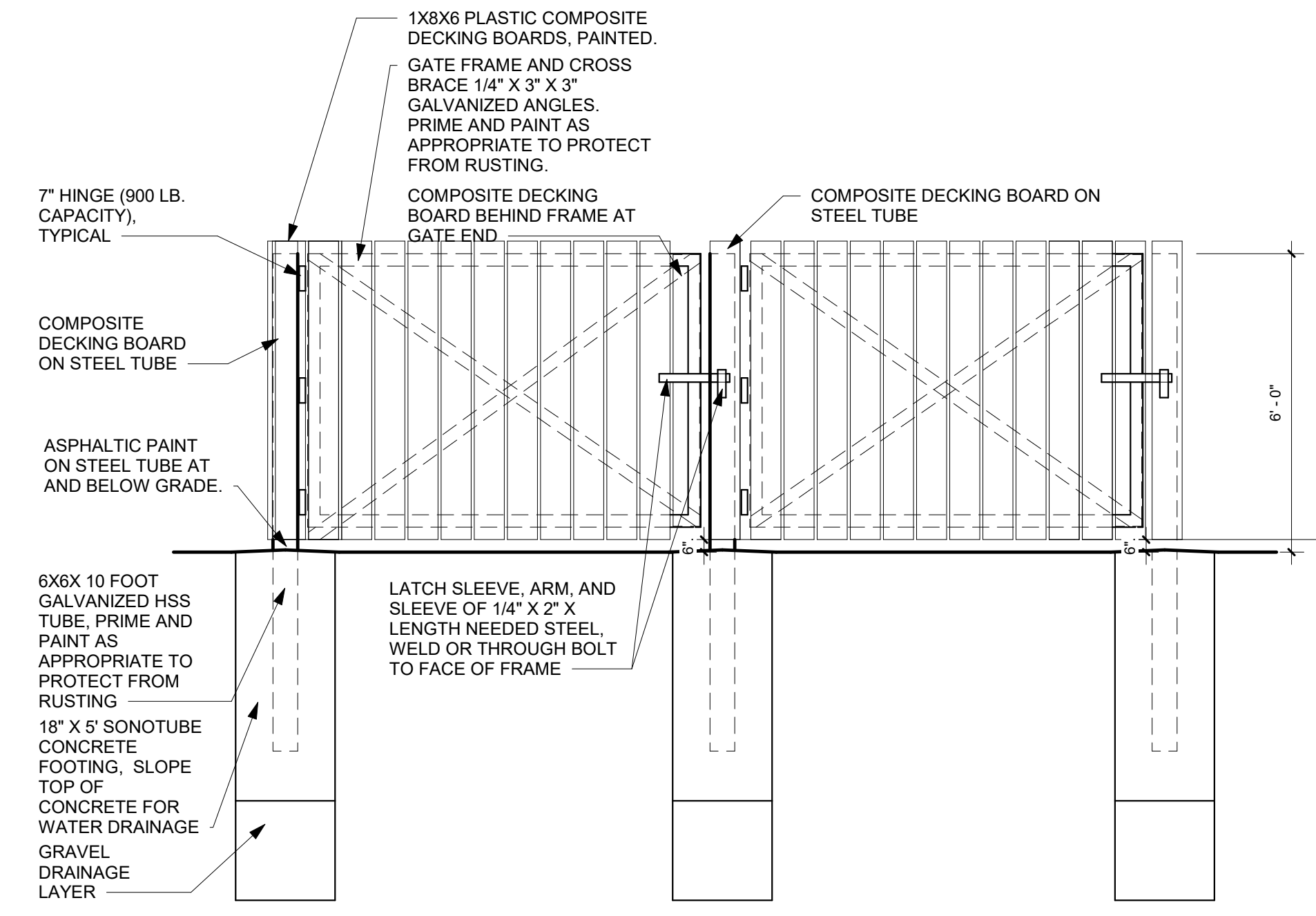
LAVS: MALE - (1) REQUIRED, (1) COMMON AREA LAVS PROVIDED; FEMALE - (1) REQUIRED, (1) COMMON AREA LAVS PROVIDED

**ENVELOPE ENERGY CODE SUMMARY**

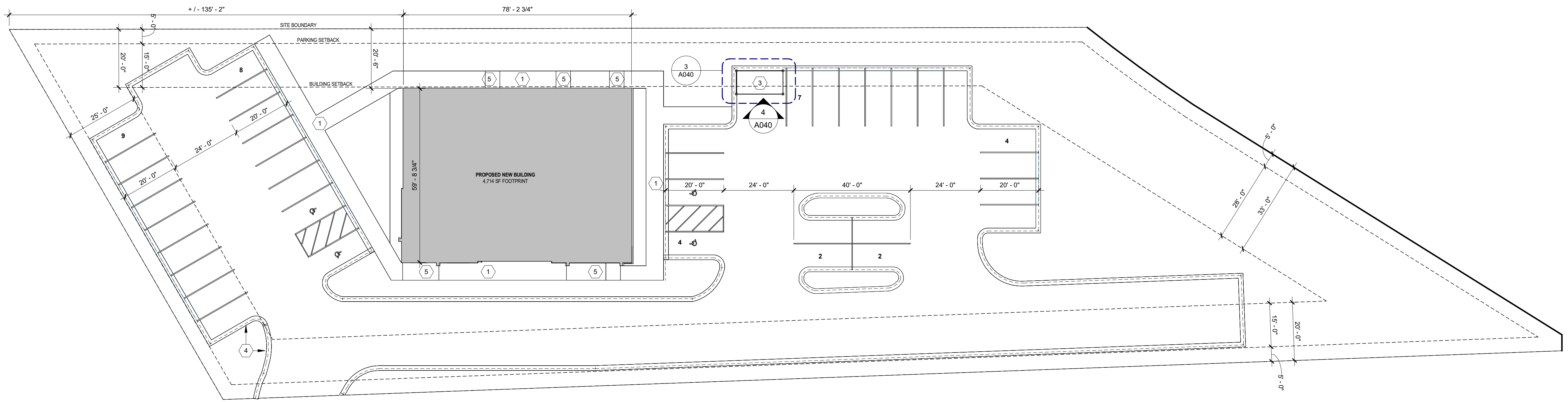
	REQUIRED	PROVIDED
ROOF - INSULATION ENTIRELY ABOVE DECK:	R-30 C.I.	R-30 C.I.
WALLS - METAL FRAMED:	R13-R-12.5 C.I.	R13-R-12.5 C.I.
FLOOR - SLAB ON GRADE - UNHEATED:	R-20 FOR 24"	R-20 FOR 24"
OPAQUE DOORS - SWINGING:	U-0.37	U-0.37
FENESTRATION - FIXED:	U-0.34	U-0.34
SHGC:	0.38	0.38
FENESTRATION - ENTRANCE DOOR:	U-0.63	U-0.63
SHGC:	0.34	0.34



3 A040 TRASH ENCLOSURE PLAN SCALE: 3/8" = 1'-0"



4 A040 TRASH ENCLOSURE ELEVATION SCALE: 3/8" = 1'-0"



1 A040 SITE PLAN SCALE: 1" = 20'-0"

**SITE DATA**

**ZONING DISTRICT:** B-3 HIGHWAY COMMERCIAL

**LOT SIZE:** 50,781 SF

**PARKING:**  
1 SPOTS REQUIRED PER 300 SF PER SECTION 50-264.11  
"Office buildings, animal hospitals, professional offices and medical clinics. At least one space for each 300 square feet of floor area."  
7,715 SF / 300 SF = 25.7  
= 26 TOTAL REQUIRED SPOTS, 34 SPOTS PROVIDED

**SITE PLAN KEYNOTES**

- 1 CONCRETE SIDEWALK
- 2 NOT USED
- 3 TRASH ENCLOSURE
- 4 CONCRETE CURB - SEE CIVIL
- 5 CONCRETE STOOP / APRON - SEE STRUCTURAL