

**FOR LEASE**  
**12 W Main St**

**12 W MAIN ST**

Carmel, IN 46032

**PRESENTED BY:**

**JESS LAWHEAD, CCIM**

O: 317.447.4403

jess.lawhead@svn.com

IN #RB14047741



PROPERTY SUMMARY



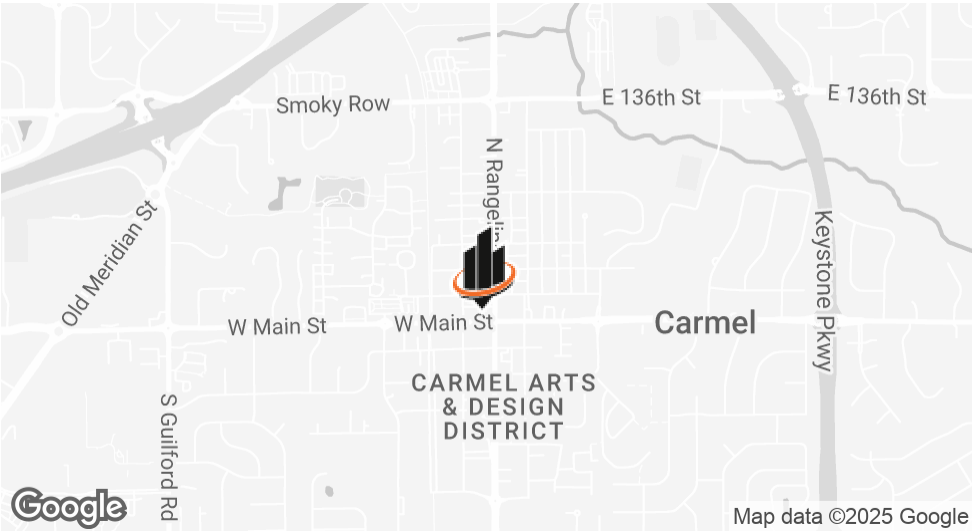
360° VIRTUAL TOUR

OFFERING SUMMARY

LEASE RATE:	\$35.00 SF/yr (NNN)
AVAILABLE SF:	924 SF
ZONING:	B-2
YEAR BUILT:	1913

JESS LAWHEAD, CCIM  
O: 317.447.4403  
jess.lawhead@svn.com  
IN #RB14047741

12 W MAIN ST | Carmel, IN 46032



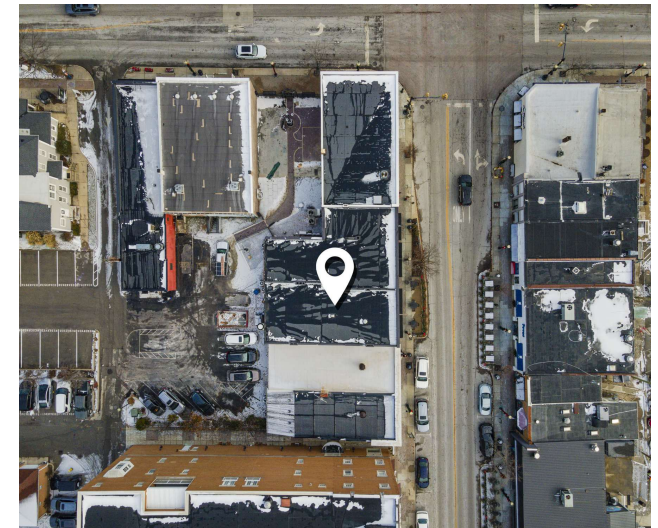
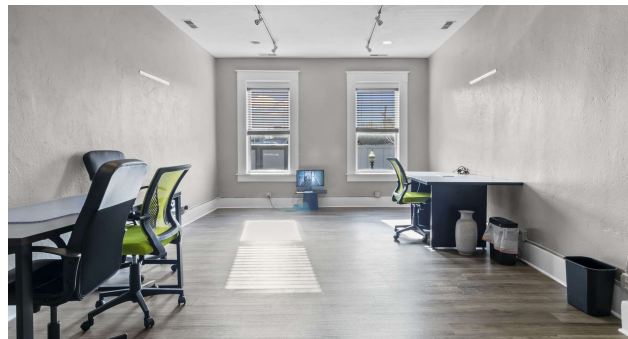
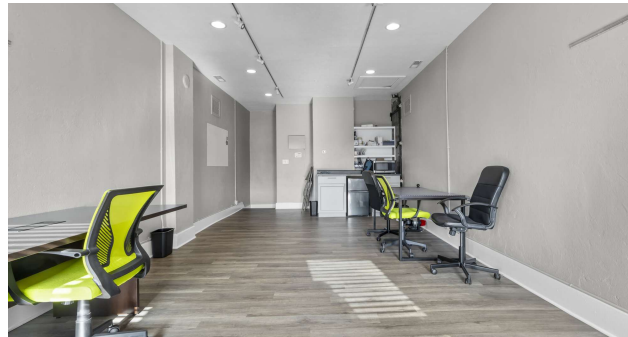
PROPERTY DESCRIPTION

Introducing a prime leasing opportunity at 12 W Main St, Carmel, IN, 46032. This 924 SF building, constructed in 1913, is zoned B-2 for versatile commercial use. Located in the Arts & Design district of Carmel, this suite is within walking distance to many amenities.

PROPERTY HIGHLIGHTS

- Main Street Location
- 2 Levels with an Unfinished Basement
- Open Floor Plan
- Great Foot Traffic
- 924 SF

## ADDITIONAL PHOTOS



**JESS LAWHEAD, CCIM**

O: 317.447.4403

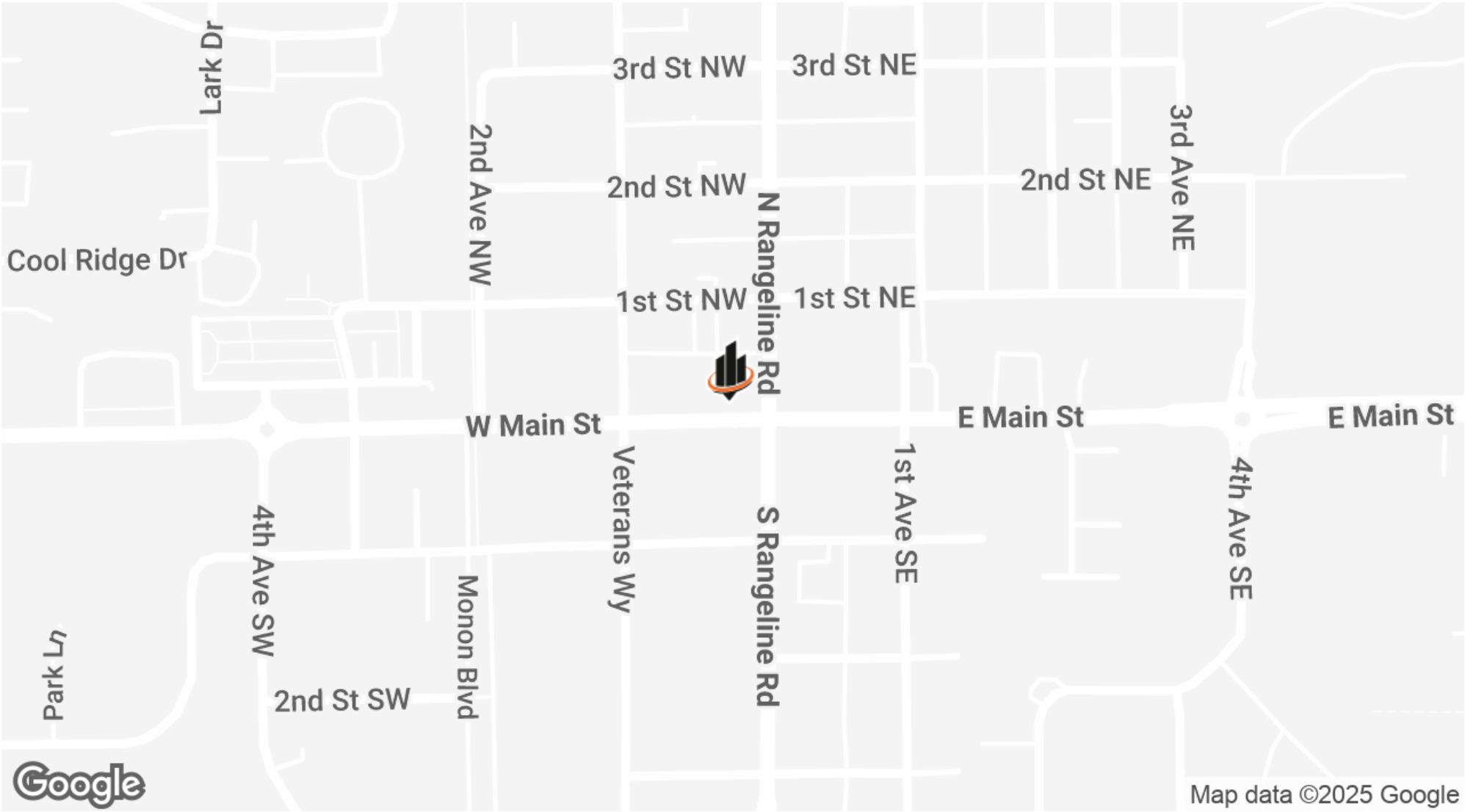
jess.lawhead@svn.com

IN #RB14047741

**12 W MAIN ST** | Carmel, IN 46032

**SVN | NORTHERN COMMERCIAL** 3

LOCATION MAP



JESS LAWHEAD, CCIM  
O: 317.447.4403  
jess.lawhead@svn.com  
IN #RB14047741