

# FOR SALE OR LEASE

±10,735 SF Warehouse Building Located Less Than 2 Miles From Exit 13A Of The NJ Turnpike

827-833 Bond Street  
Elizabeth, NJ



Situated In The Heart Of New Jersey's Most Connected Industrial Zone  
Minutes From Port Newark-Elizabeth Marine Terminal and Newark International Airport

For further information please contact Exclusive Broker:

**NAI** DiLeo-Bram & Co.

Commercial Real Estate Services, Worldwide.

Kyle Gerace  
Vice President

732 985 3000 ext. 229  
[kgerace@naidb.com](mailto:kgerace@naidb.com)

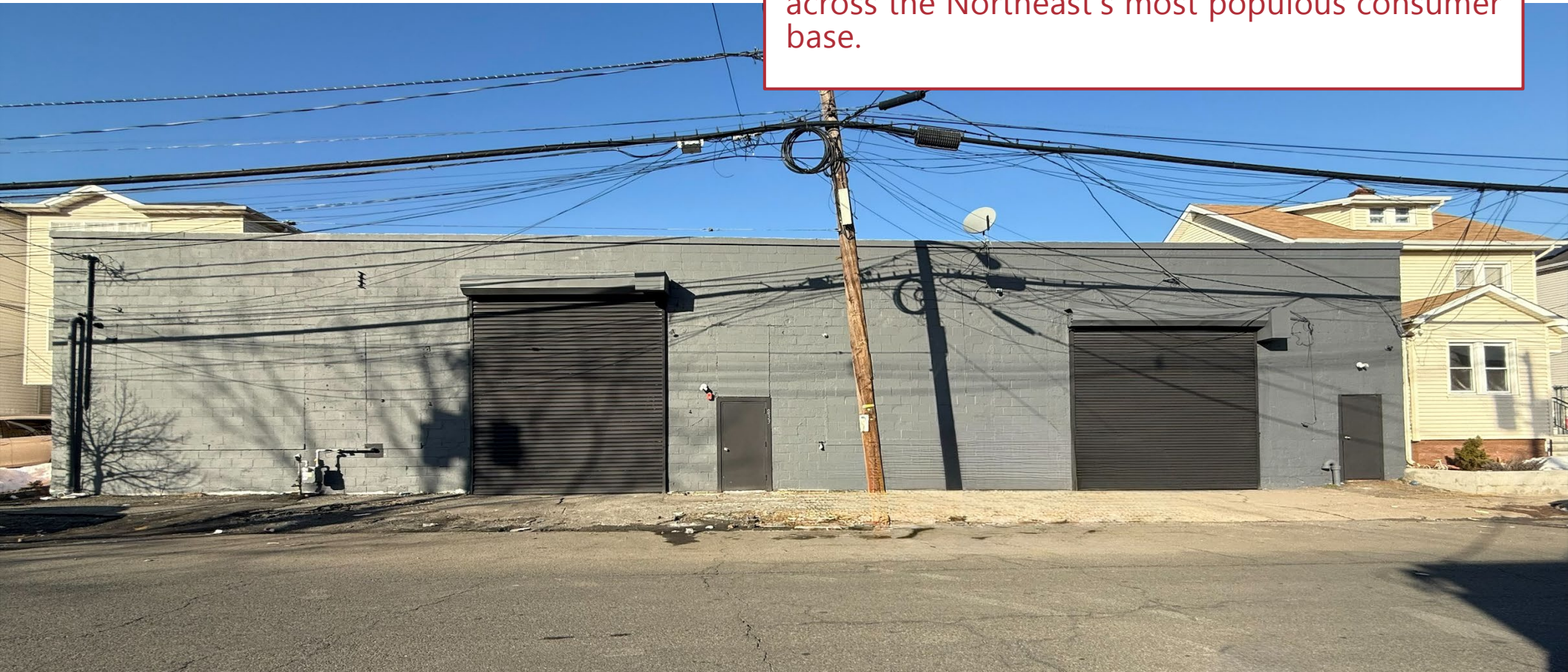
Christopher Chiusolo  
Vice President

732 985 3000 ext. 210  
[cchiusolo@naidb.com](mailto:cchiusolo@naidb.com)

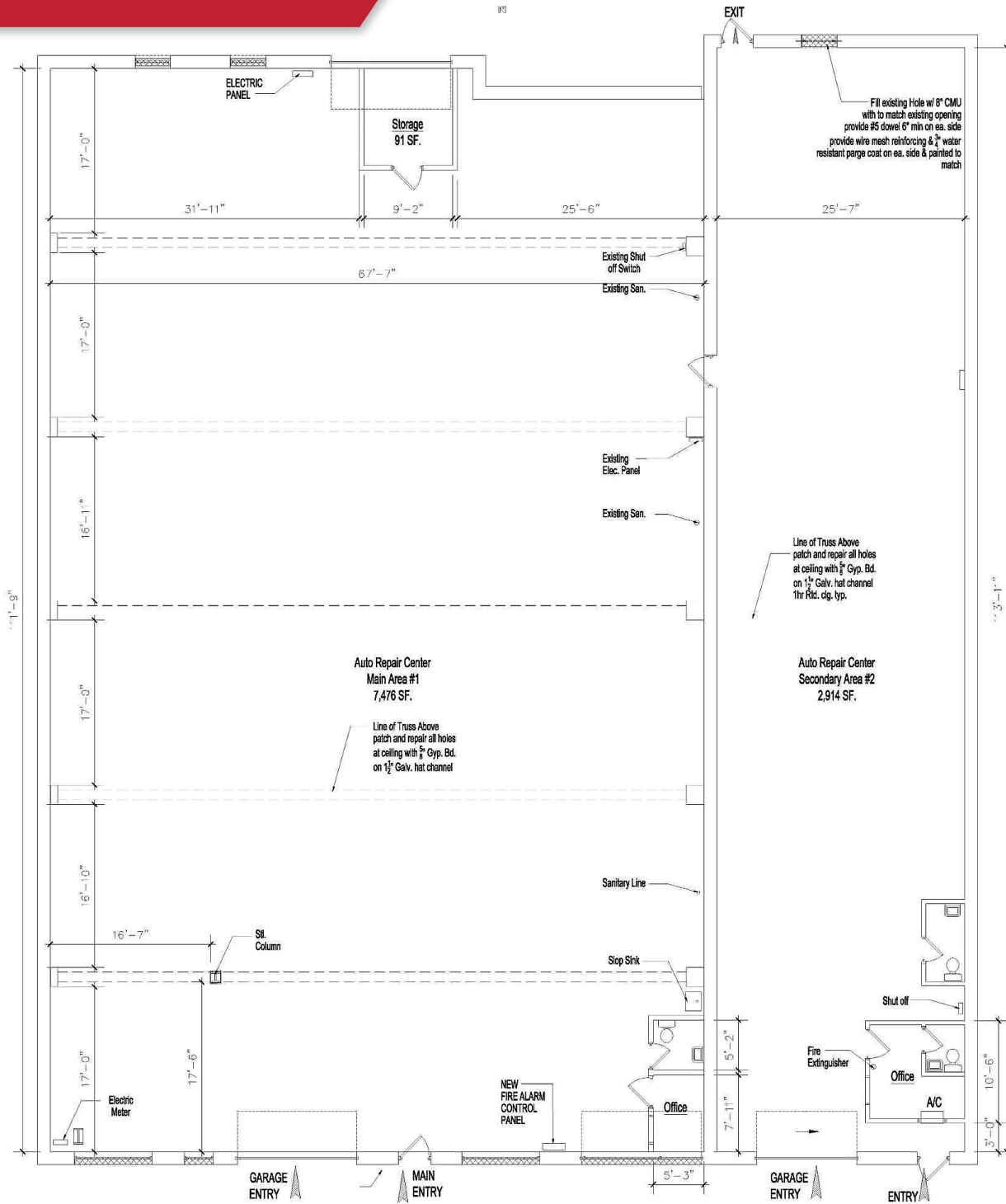
# PROPERTY FEATURES

- ±10,735 sf warehouse building featuring ±500 sf of newly constructed office space
- 2 drive-in doors (14 ft.)
- 16 ft. clear ceiling height
- New lighting
- New electric wiring and panel
- Security cameras

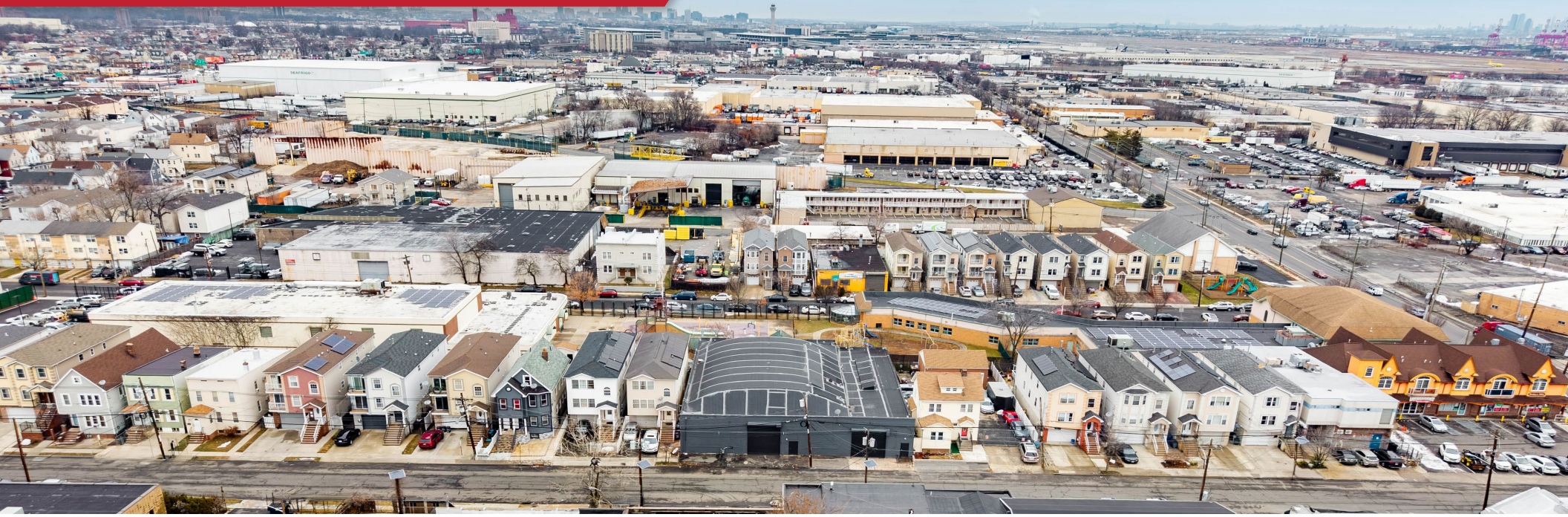
Offering easy access to the New Jersey Turnpike, Routes 1 & 9 and I-78, Elizabeth's established industrial corridor provides an ideal environment for logistics and warehousing operations – featuring a dense concentration of distribution centers, a readily available and skilled local labor pool, and advanced multimodal infrastructure that supports efficient regional distribution and last-mile delivery. Whether you're handling containerized cargo from the ports, air cargo from Newark, or time-sensitive deliveries into New York City, this location minimizes transit times, reduces costs, and maximizes reach across the Northeast's most populous consumer base.



# FLOOR PLAN



# BUILDING PHOTOS





**±500 Sq. Ft. Of Newly Constructed Office Space**

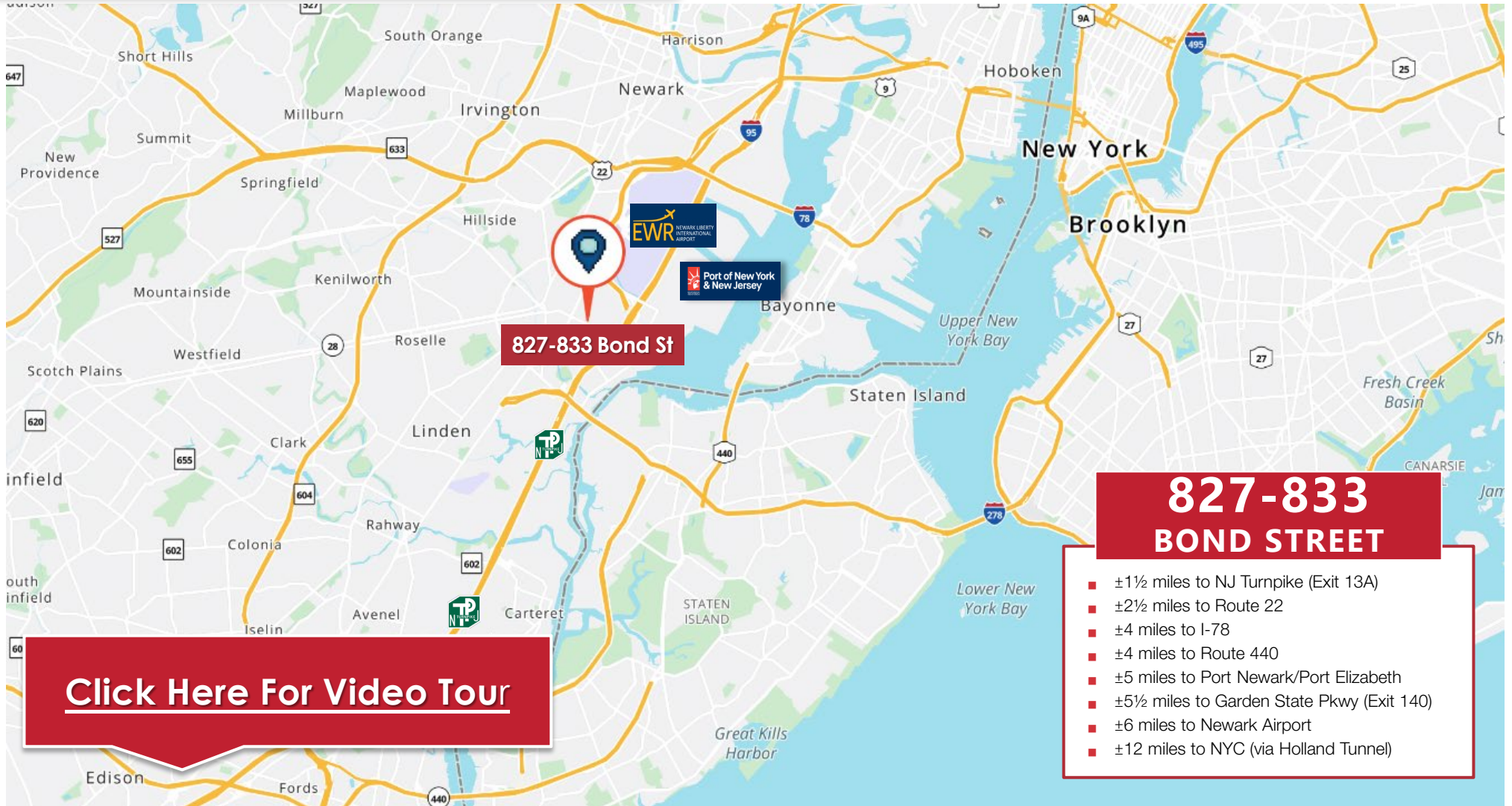


**Warehouse Space Featuring 2 Drive-In Doors  
and All New Lighting**

# STRATEGICALLY LOCATED

# NAIDiLeo-Bram&Co.

Commercial Real Estate Services, Worldwide.



For further information please contact Exclusive Broker:

90 Woodbridge Center Drive, Suite 160  
Woodbridge, NJ 07095  
732 985 3000 | [naidb.com](http://naidb.com)

**Kyle Gerace**  
Vice President

732 985 3000 ext. 229  
[kgerace@naidb.com](mailto:kgerace@naidb.com)

**Christopher Chiusolo**  
Vice President

732 985 3000 ext. 210  
[cchiusolo@naidb.com](mailto:cchiusolo@naidb.com)

The information contained herein has been given to us by the owner of the property or other sources we deem reliable. We have no reason to doubt its accuracy, but we do not guarantee it. All information should be verified prior to purchase or lease.