



## **OFFICE/SHOWROOM BUILDING FOR LEASE**

**21 HAGERTY BLVD WEST CHESTER, PA 19382**



## PROPERTY DESCRIPTION

Two Story Stand Alone Building With Office/Showroom/Retail Space

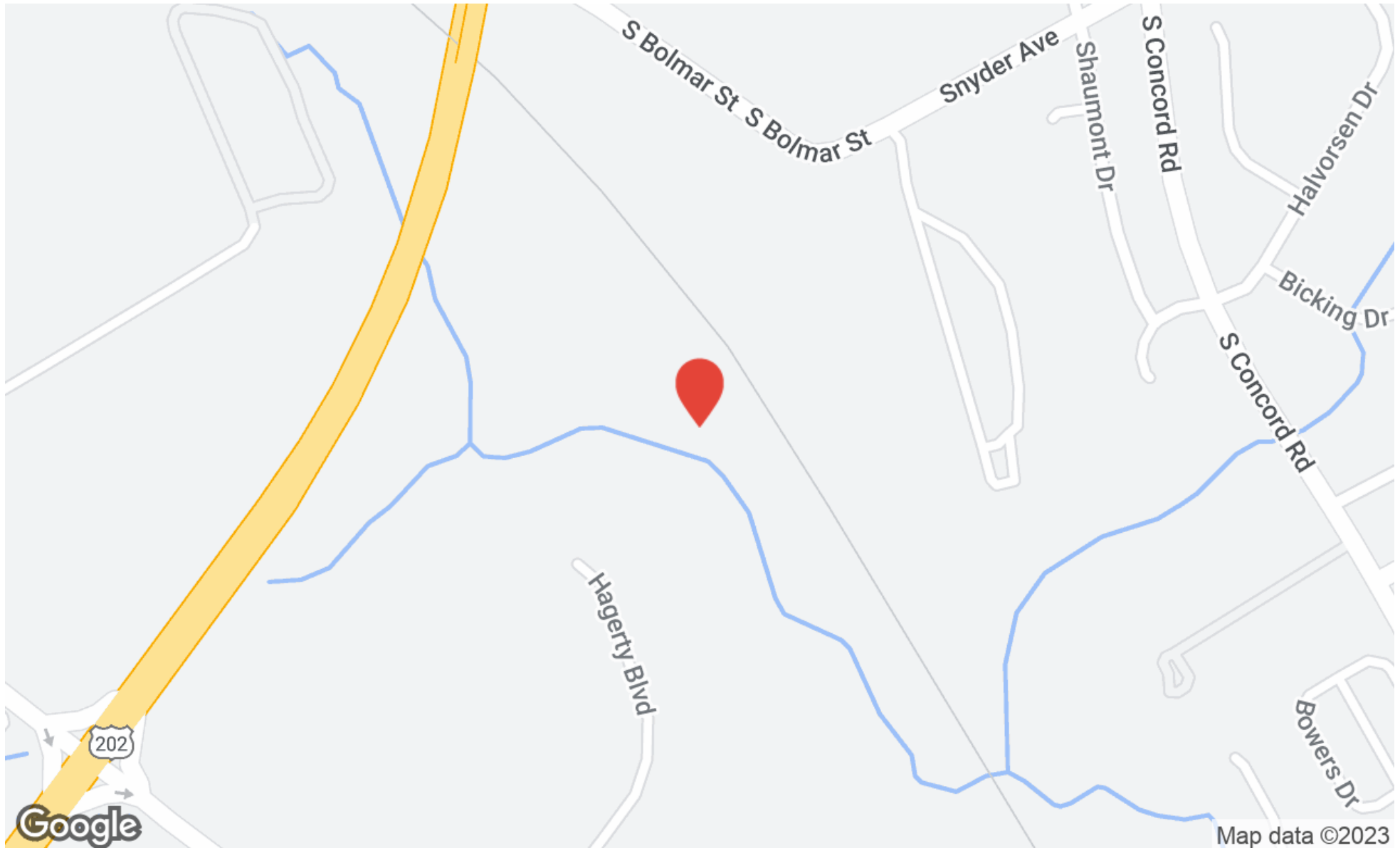
## PROPERTY HIGHLIGHTS

- +/- 3,325 Total SF in a Two Story Building
- Numerous Permitted Uses Including Office/Showroom/Retail
- All Public Utilities
- Parking +/- 20 Cars
- West Goshen Township I-2 Zoning
- Easy Access to Route North & South

## OFFERING SUMMARY

Lease Rate:	\$12.00 SF/yr (NNN)
Number of Units:	1
Available SF:	3,325 SF
Building Size:	3,325 SF

DEMOGRAPHICS	0.5 MILES	1 MILE	1.5 MILES
Total Households	463	2,549	7,328
Total Population	1,222	6,823	21,655
Average HH Income	\$97,113	\$111,973	\$107,526

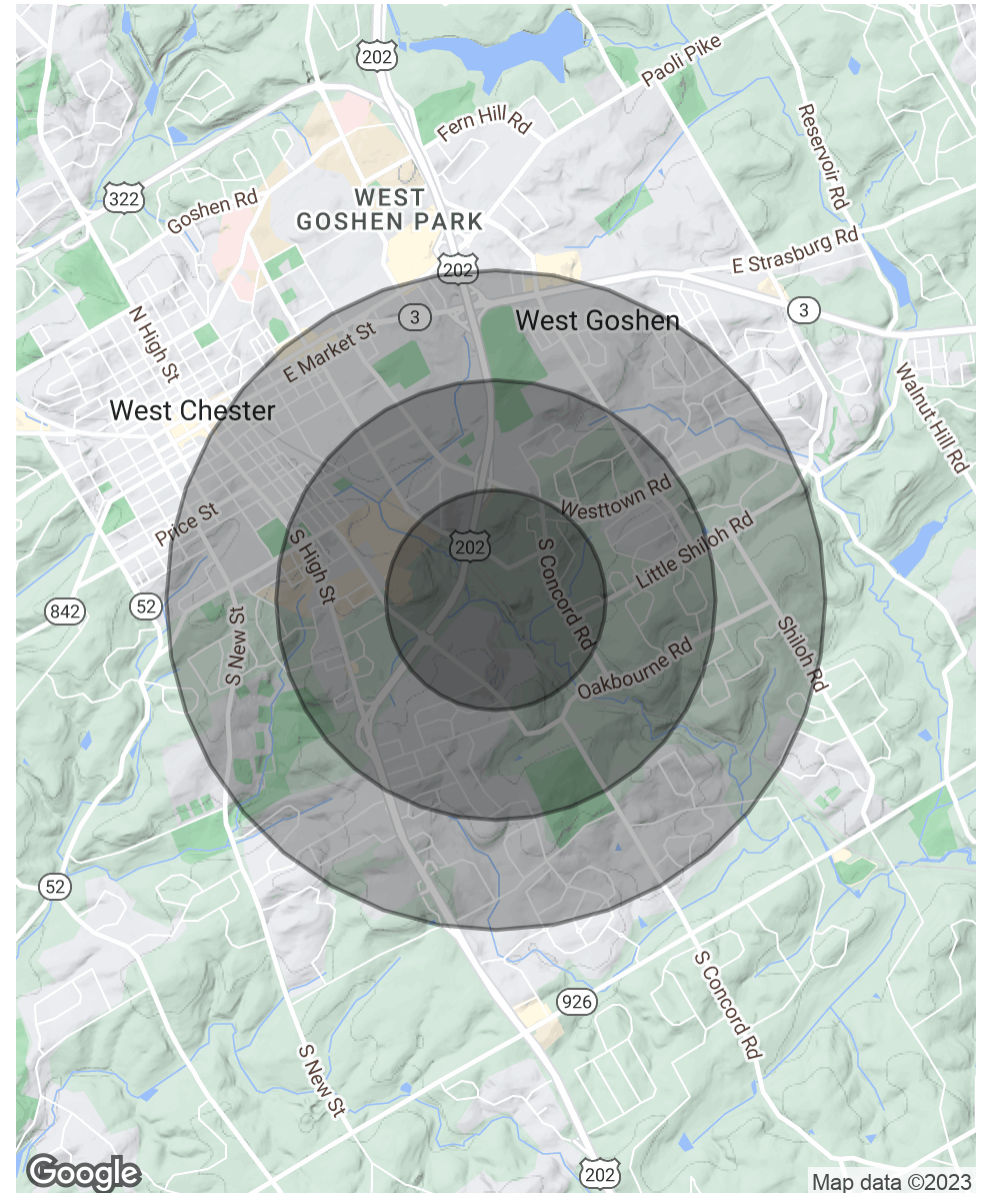


POPULATION	0.5 MILES	1 MILE	1.5 MILES
Total Population	1,222	6,823	21,655
Average Age	34.1	36.3	32.4
Average Age (Male)	37.3	36.8	32.0
Average Age (Female)	33.9	36.5	33.5

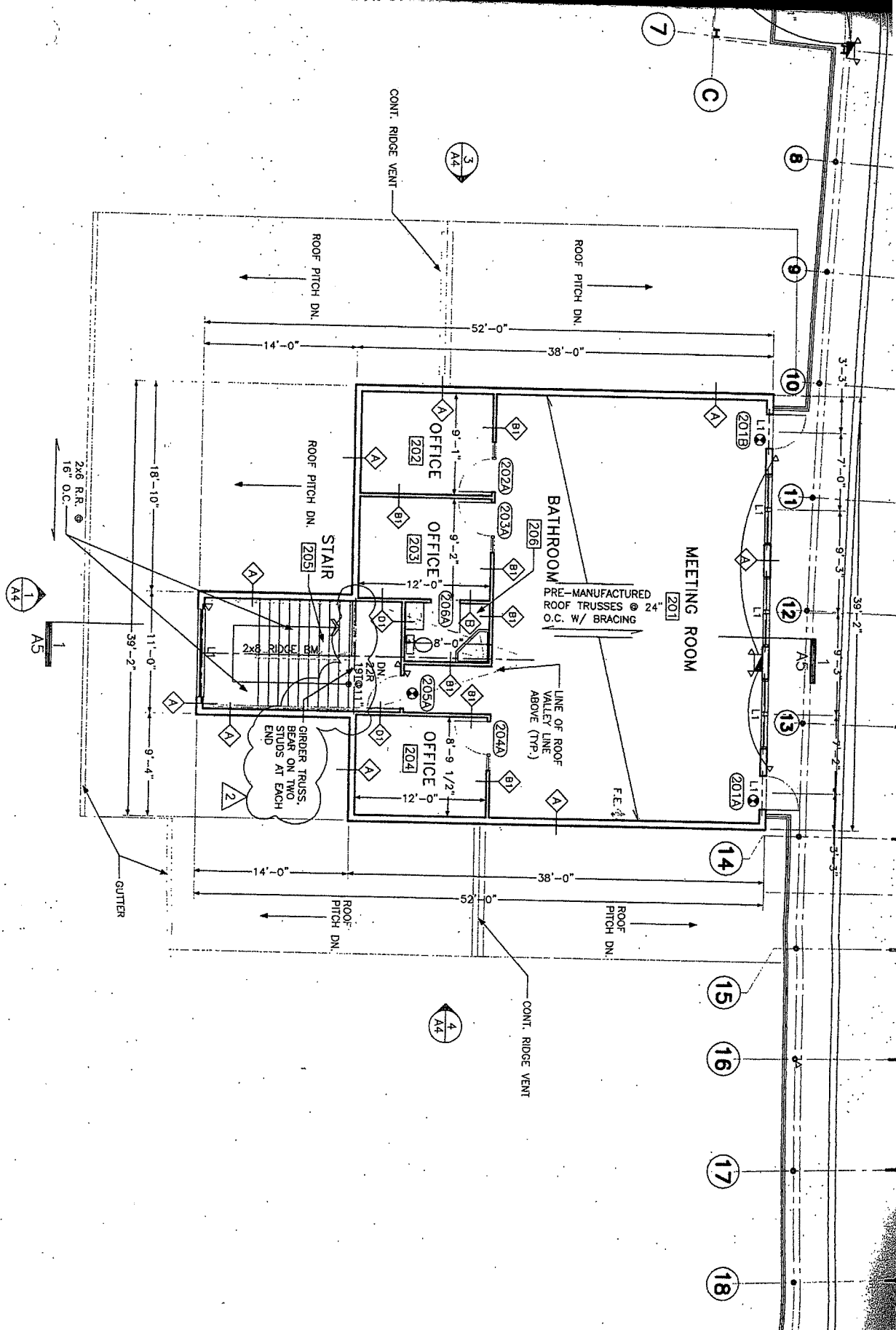
HOUSEHOLDS & INCOME	0.5 MILES	1 MILE	1.5 MILES
Total Households	463	2,549	7,328
# of Persons per HH	2.6	2.7	3.0
Average HH Income	\$97,113	\$111,973	\$107,526
Average House Value	\$360,357	\$397,472	\$395,947

*\* Demographic data derived from 2020 ACS - US Census*



Map data ©2023









21 Hagerty Blvd  
West Chester, PA 19382

**LARRY WYGANT**  
larry@swopelees.com  
610.429.0200 x104



**LARRY WYGANT**

Associate Broker

larry@swopelees.com

**Direct:** 610.429.0200 x104 | **Cell:** 610.457.6506

**Swope Lees Commercial Real Estate**  
208 East Market Street  
West Chester, PA 19382  
610.429.0200